



BRIHANMUMBAI MAHANAGARPALIKA

Section 4 Manuals as per provision of
RTI Act 2005 of F/South Ward

ASSTT. ENGINEER(MAINT.) DEPARTMENT

Address - Office of Asstt. Engineer (Maint), 2nd Floor,
F/South Ward Building, Dr. B. A. Road, Parel,
Mumbai – 400 012

INDEX

Sr, No.	Section 4 (1) B Sub Clauses	Description of the Chapter's Contents	Page No.
		Introduction	3 – 4
1	4 (1) (b) (i)	Particulars of Organization, Function and Duties	5 - 21
2	4 (1) (b) (ii)	Powers and Duties of Officers and Employees	22 – 49
3	4 (1) (b) (iii)	Procedure followed in Decision Making Process including Channels of supervision and accountability	50 – 58
4	4 (1) (b) (iv)	Norms set for discharge of its functions	59
5	4 (1) (b) (v)	The rules, regulation, instruction, manuals and records, held by it or under its control or used by the employees for discharging department functions	60
6	4 (1) (b) (vi)	Statement of categories of documents that are held and under the control of the office of Asstt. Engineer (M & R)	61 – 62
7	4 (1) (b) (vii)	Particulars of any arrangement that exists for consultation with the members of the public in relation to the formulation of the department's policy and implementation thereof.	63
8	4 (1) (b) (viii)	A Statement of the boards, councils, committees and other bodies consisting of two or more persons constituted as its part or for the purpose of its advice, and as to whether meetings of those boards, councils, committees and other bodies are open to the public or the minutes of such meetings are accessible for public.	64
9	4 (1) (b) (ix)	Directory of the officers and employees	65 – 74
10	4 (1) (b) (x)	The monthly remuneration received by each of its officers and employees including the system of compensation as provided in its regulations.	75 – 100
11	4 (1) (b) (xi)	The Budget allocated to each of its agency, indicating the particulars of all plans, proposed expenditures and reports on disbursement made.	101 – 103
12	4 (1) (b) (xii)	The manner of execution of subsidy programs, including the amounts allocated and the details of beneficiaries of such programs.	104
13	4 (1) (b) (xiii)	The particulars of recipients of concession, permits or authorisations granted by department.	105
14	4 (1) (b) (xiv)	Details in respect of the information available to or held by it, reduced in an electronic form.	106
15	4 (1) (b) (xv)	The particulars of facilities available to citizens for obtaining information including the working hours of a library or reading room	107
16	4 (1) (b) (xvi)	The names, designations and other particulars of the Public Information Officers	108 – 110
17	4 (1) (b) (xvii)	Such other information as may be prescribed.	111 - 118

Introduction

Assistant Engineer (Maintenance & Repair)

The right to information is implicitly guaranteed by the Constitution. However, with a view to set out a practical regime for securing information, the Indian Parliament enacted the Right to Information Act, 2005 and thus provided a powerful tool to the citizens to get information from the Government as a matter of right. This law is very comprehensive and covers almost all matters of governance and has the widest possible reach, being applicable to Government at all levels- Union, State and Local as well as recipients of government grants.

The basic object of the Right to Information Act is to empower the citizens, promote transparency and accountability in the working of the Government and make our democracy work for the people in real sense. The Act is a big step towards making the citizens informed about the activities of the Government.

The Act requires the Government authority to compile a handbook in easily comprehensible form and to update it from time to time under **Section 4(1) b** sub clauses i to xvii (17 Manuals). The objective of publishing 17 Manuals is the proactive disclosure of the information/records held by Govt. Authority for the information seekers. The office of Assistant Engineer, Maintenance & repair, F/South ward is hereby publishing the Handbook for 17 Manuals as required under RTI Act 2005 to promote transparency and accountability in the working of the department & to give easy access to the information seekers to the information & records held by this office.

This handbook contains introduction about the department along with particulars of its functions, duties, objectives & vision. It further elaborates about the duties, powers delegated to its officers & employees. The procedure followed in decision-making process, accountability of concerned officers, norms set for discharge of its function along with Acts, related rules/regulations are further described in detail. It also contains the Statement of Categories of documents held by this office, directory & remuneration of its officers and employees. The details of budget allocation & its disbursement, particulars of permits issued, facilities available for citizens & details of PIO/Appellate authority is also published for information.

This consolidated updated handbook on 17 Manuals of the Act would help all the information seekers in getting information. However, in case any information seeker wants to get more information on topics covered in the handbook as well as other information may contact Assistant Engineer (Maintenance & repair), F/South ward whose office is situated at F/South ward office, Room No. 17, 18, 2nd floor, Jn. J.B. Road & Dr. B.A. Road, Parel, Mumbai-400012. The procedure and fee structure for getting information is as per the provisions of RTI Act, 2005.

The Municipal Corporation of Greater Mumbai has decentralized most of the main departments and placed the relevant sections of these departments under the Assistant Commissioner at ward level. Maintenance department is an important department in the Ward Office and it is operated by the Sub Engineers and Junior Engineers working under the Assistant Engineer (Maintenance & Repair) is under administrative control of Assistant Commissioner. The Assistant Engineer (Maintenance & Repair) is the sectional Head of Ward who is responsible for the maintenance & repairs of Municipal roads & properties with the help of departmental artisans and approved private contractors. He has to take appropriate action on the unauthorized constructions detected on Roads & footpaths. This department issues various permissions like Mandap Permission, Trench permission etc. as per various norms.

Beat wise responsibility of the electrol wards rests with the Jr. Engineers. The Jr. Engineers works under the supervision of the Sub Engineer & the control of Assistant Engineer. The preview of this department is quite extensive and the staff such as Mukadam & Labours in Roads & Repair sections, Mistry, Carpenter, Mason, Blacksmith, Plumber etc work in this department. Material required for the various departmental works is provided by Store Clerk.

As per Central Right to Information Act 2005, designated officer is appointed as Public Information Officer Maintenance & Repair for Maintenance & Repair department and as per Maharashtra Public Records Act-2005 and Maharashtra Public Records Act Rules -2007, he is designated as Record Officer for Maintenance & Repair Dept.

**Assistant Engineer (M & R)
F/South ward**

SECTION 4 (1) (b) (i)

The particulars of functions & duties of the public authority

1	Name of the Section	Office of Assistant Engineer (Maintenance & Repair)
2	Address	Room No. 17 & 18, 2 nd floor, F/South ward office Building, Dr. B. A. Road, J. Bhatankar Marg, Parel naka, Parel, Mumbai- 400 012
3	Head of the office	Assistant Engineer, Maintenance & Repair
4	Office Timings	Monday to Friday 8.00 a.m. to 12.00 noon and 2.30 P.M. to 5.30 p.m. Saturdays 08.00am to 11.30 am Visiting Hours - (Monday – Friday) 03.00 p.m. to 05.00 pm Holidays- Sunday & Public Holidays
5	Chowky Timings	07:30 am – 2:30 pm
6	Contact Details	Telephone no : 24134560 Extn : 204(AEM—II) & 205(AEM-I). Email Asst. Eng - aemaint01.fs@mcgm.gov.in Email Sub Eng - semaint02.fs@mcgm.gov.in
7	Parent Government Department	City Engineer
8	Reporting to which office	Assistant Commissioner, F/South Ward Ward Ex. Engineer, F/South Ward
9	Jurisdiction Geographical	F/South ward is bounded by the Thane creek on the East, central railway on West Mumbai Marathi Granth Sangrahalaya Marg on North and Dattaram Lad Marg on South side covering North Central portion of the city.
10	Vision	1. Well maintained Roads 2. Well maintained Municipal Properties
11	Mission	To Repair & Maintain Minor Roads, Footpath & Municipal Properties in Ward.
12	Objectives	To Repair & Maintain Roads and Footpath & Municipal Properties.
13	Functions	(a) Repair & Maintenance of Minor Roads & Footpath in Ward. (b) Repair & Maintenance of Municipal Properties in purview of the Estate Department. (c) To demolish the unauthorized encroachments on footpath, roads & Municipal Plots. (d) Issuance permits to the excavation of trenches on roads to the various utility services & various departments of MCGM.

		<p>(e) Granting of Mandap Permission for social & regional purpose on Roads, Footpath & Municipal Properties.</p> <p>(f) Granting of Ganapati Mandap Permission on Roads, Footpath & Municipal Properties.</p> <p>(g) Granting of Film shooting permission on Municipal Roads.</p> <p>(h) Improve roads under Section 63 (K) of MMC Act. (refer pg. no. __)</p> <p>(i) Acquire the Setback area of the road & merge the same into the road. (refer pg. no. __)</p> <p>(j) Remove Bottlenecks. (refer pg. no. __)</p> <p>(k) Action in respect of dangerous Municipal buildings.</p>
14	Details of Services provided (In Brief)	<p>1. Trench Permission : -</p> <ul style="list-style-type: none"> • Issuance of permits for the excavation of trenches on roads to various utility Services & Various departments of MCGM is granted as per Trench Guideline Circular Policy issued by Municipal Commissioner u/no. MGC / F/1835 dated 17.11.2007. (attached) • Permission for laying augmentation of the utility pipelines / cables shall be granted only during the fair season starting from 1st October till 15th April. For trench exclusively on footpath / paver blocks, the permission shall be granted upto 30th April. • From 16th April to 30th September, for the fault repair, sanction of Zonal D.M.C. shall be obtained as far as possible before undertaking excavation. • As per recent circular vide no. MGC/F/9974 dated 04.02.2013

		<p>2. Issuance of Ganpati Mandap Permission is granted as per Circular u/no MDF / OD / 8358/Gen dt. 11.06.2013.</p> <p>3. Issuance of Film Shooting permission.</p> <p>4. Bottleneck :-</p> <ul style="list-style-type: none"> • Bottleneck means construction, narrowing, obstruction, congestion, block, partially/total blockage which leads to traffic congestion, traffic clogging problems started due to precipitant. • Reference Circular – AMC/ES/D/168 (ChE/1876/DPC/Gen) Dated 25.02.2004. • Recently we are using MRTP 56 clause.(Power to require removal of authorized development or use.) • (AMC/ES/9141 dt. 14.10.2011. <p>5. 63 K Road :-</p> <ul style="list-style-type: none"> • Arising out of representation from residents of private layouts and Public representatives, that layout residents are paying Municipal taxes and therefore roads should be maintained by MCGM. • Reference Circular ChE/1484/Roads Dated 16.05.2009 <p>(l) As per the circular 1/3 cost of up gradation shall be borne by Co. Op. Hsg. Society of Residents, 2/3 cost by MCGM and the private street shall be declared public under section 306 of MMC Act 1888 before taking up the works. However, in case 1/3 construction cost is not deposited by Co. Op. Hsg. Society / Federation of Societies and roads in private layout are to be improved using Municipal Funds,</p>
--	--	---

M.P./MLA funds then sanction under section 63 K

6. Departmental Maintenance & Repair :-

- Beat wise responsibility of the electrol wards rests with the Junior Engineers. The Junior Engineers works under the supervision of the Sub Engineer and the control of Asstt. Engineer. The Junior Engineer reports to his chowky along with his workmen at 7.30 a.m. the labour distribution is carried out after singing the muster at 7.30 a.m.
- A group of workmen (gang) comprising of 2 to 3 labours, the skilled labours such as mason, carpenter and plumber is formed and additional labours as per the extent of jpb is provided to that gang. A job Slip is issued to gang to carryout various day to day work. The job Slip is prepared by the Junior Engineer according to nature and priority of complaint and it is signed by Mistry and the Junior Engineer. The address of Municipal property where the work is to be carried out, nature of work and the number of workmen is mentioned in the job slip.
- Generally, sufficient material is brought to the chowkies from the Central Store. The non-scheduled items are also procured by following due procedures or by calling for the quotations, from the open market. The material thus procured is stocked in the store and is in position with supervision / clerk. This material is transported to the work site in Municipal vehicles.
- Junior Engineers, Mistry / Mukadam visit the work site, at least once, for supervision and guidance. The Junior Engineer reports to the office to attend the office work in the afternoon session between 2.300 p.m. to 5.30 p.m

		<p>7. E-Tendering :-</p> <ul style="list-style-type: none"> • Preparation of Estimate by J.E. • Obtain Administrative approval from ward Committee or DMC etc. • Estimate is uploaded in SAP System in A.E. or SE's ID (R3 Module) • BID is created by A.E. /S.E. using their ID. SRM Module E tendering. • BID is forwarded to E.E. Ward for publishing on Municipal Website. • Ward E.E. Publish the Tender (SRM E tender login Approval) • List of Bidder and letter to successful 1st Bidder with 5 % contract amount to deposit with MCGM • PO is created by A.E. in SAP Module. • Release P.O. Amount by A.O. • Create Contract by E.E. ward in SAP System. • PO is generated by A.E. in SAP and released by E.E. Ward. • PO printout is taken by AE and issued to Bidder . <p>8. Mahatma Gandhi Pathkranti Yojana:-</p> <ul style="list-style-type: none"> • It is a scheme to clear the footpath of encroachment. • Certain roads are identified in each ward. • Cutoff date is 01.01.1995. • The eligible hutment dwellers are offered alternate accommodation.
--	--	---

		<ul style="list-style-type: none"> • To draw lottery to decide alternate accommodation in presence of all eligible hutments dwellers. • After shifting mass demolition to be carried out. • The footpath so cleared should be immediately developed for public usage. • AMC/ES/944/IV dated 31.03.2012 • DMC/RE/Z.Su/4274 dated 26.02.2013.
15	Physical assets (Statement of lands & Buildings and other Assets)	As per separate sheet attached (Page No.____)
16	Organization's structural Chart	As per separate sheet attached (Page No.____)

Details of Departmental Chowky in Asstt. Engineer (Maint) Section

Sr. No.	Type	Name of Chowky	Address of Chowky	Contact No.
1	Road & Repair	Morbaug Chowky	G. D. Ambekar Marg, Beside Police Ground, Parel	NIL
2	Repair	Shivaji Nagar Chowky	D.G. Mahajani Path, Sewree, Mumbai - 400 015.	NIL
3	Repair	Madhav Nagar Chowky	Madhav Nagar, R.A. Kidwai Marg	NIL
4	Repair	2 nd October Chowky	Jerbai Wadia Road, Mahatma Phule Sadan, Gala No. 38	NIL
5	Repair	Bhoiwada Chowky	G. D. Ambekar Marg, Sai Prasad Bldg., 1 st Floor, Parel	NIL
6	Repair	Elphistone Chowky	Jagnnath Bhatankar Marg, Parel, Mumbai – 400 012.	NIL
7	Road	Narepark Chowky	Chamarbaug X Lane, Parel, Mumbai-400 012.	NIL
8	Repair	Peru Compound Chawl Chowky	Gas Company Lane, Opp. to Gundechya Tower, Chinchpokali, Parel, Mumbai- 400 012.	NIL
9	Repair	Naigaon Repair Chowky	58 F, Near Kolkeshwar Mandir, G. D. Ambekar Marg, Parel, Mumbai- 400 012.	NIL

Physical Assets of Asstt. Engineer (Maintenance & Repair) F/South Ward

Sr. No.	Beat No	Name & Address	Floor	Remark
1	196	Madhav Nagar A to G Buildings- R.A. Kidwai Marg, Wadala, Mumbai-4000 31.	G+3	
2	196	Kidwai Nagar Building 1 to 14 - R.A. Kidwai Marg, Wadala, Mumbai-4000 31.	G+3	
3	196	Kidwai Nagar Municipal Dispensary - R.A. Kidwai Marg, Wadala, Mumbai-4000 31.	Ground	
4	196	Sewree X Road Municipal Dispensary – Sewree X Road	Ground	
5	196	Sewree X Road Marathi & Urdu Municipal School	G + 4	
6	196	Sewree X Road, Sharifa Manjil Chawl, Sewree X Road	Ground	
7	196	Sewree X Road, Kusum Bholi Mastar Chawl 103/1 & 2	Ground	
8	196	Sewree X Road Chawl No . 55	Ground	
9	196	Sewree X Road Chawl No . 34	Ground	
10	196	Sewree X Road Chawl No . 46	Ground	
11	196	Sewree X Road Chawl No . 21	Ground	
12	196	Sewree X Road Chawl No . 22A	SRA Scheme	
13	196	Sewree X Road Chawl No . 22 B	Ground	
14	196	Sewree X Road Chawl No . 22C	Ground	
15	196	Sewree X Road Chawl No . 15	Ground	

PTO

16	196	Sewree X Road Chawl No . 13	Ground	
17	196	Sewree X Road Chawl No . 16 A	Ground	
18	196	Sewree X Road Chawl No . 16 B	Ground	
19	196	Sewree X Road Chawl No . 06	Ground	
20	196	Suleman Compound Case No. 9	Ground	
21	196	Doctor's Quarters A wing , GTB Hospital , Sewree	G+3	
22	196	Doctor's Quarters B wing , GTB Hospital , Sewree	G+3	
23	196	Doctor's Quarters C wing , GTB Hospital , Sewree	G+3	
24	196	Doctor's Quarters Welfare Centre, GTB Hospital , Sewree	G +1	
25	196	M.S. Bunglow, GTB Hospital , Sewree	Ground	
26	196	Nurses Quarters, Old Building, GTB Hospital , Sewree	G+3	
27	196	Nurses Quarters, New Building, GTB Hospital , Sewree	G+3	
28	196	Clerical Quarters, GTB Hospital , Sewree	---	Dilapidated
29	196	Technical Quarters, GTB Hospital , Sewree	G+3	
30	196	Kamgar Vasahat Old Bldg. A, GTB Hospital , Sewree	G+3	
31	196	Kamgar Vasahat Old Bldg. E, GTB Hospital , Sewree	G+3	
32	196	Kamgar Vasahat Old Bldg. F, GTB Hospital , Sewree	G+3	

PTO

33	196	Kamgar Vasahat New Bldg. A, GTB Hospital , Sewree	G+3	
34	196	Kamgar Vasahat New Bldg. B, GTB Hospital , Sewree	G+3	
35	196	Kamgar Vasahat Welfare Centre, GTB Hospital , Sewree	G+1	
36	196	T.S. Compound Kamgar Vasahat Chawl No. 1, GTB Hospital , Sewree	----	
37	196	T.S. Compound Kamgar Vasahat Chawl No. 2, GTB Hospital , Sewree	----	
38	196	T.S. Compound Kamgar Vasahat Chawl No. 3, GTB Hospital , Sewree	----	
39	196	T.S. Compound Kamgar Vasahat Chawl No.4, GTB Hospital , Sewree	----	
40	196	T.S. Compound Transit Camp, Chawl No. 1, GTB Hospital , Sewree	----	
41	196	T.S. Compound Transit Camp, Chawl No. 2, GTB Hospital , Sewree	----	
42	195	48 Tenaments ,Block A & B, Parel	G + 3	
43	195	Abhinandan Bldg., Helth Centre	G+ 1	
44	195	New Naigaon Municipal School, Naigaon	G + 4	
45	195	Dankare Guruji Garden, Naigaon		
46	195	Gautam Nagar Dispensary, Welfare Centre		

PTO

47	195	Gautam Nagar Bldg. No. 1 & 2	G + 4	
48	195	Gautam Nagar Bldg. No. 4 & 5	G + 5	
49	195	New Transit Camp, A to F , Chawl	Ground	
50	195	Asha Bldg Municipal School	Ground	
51	195	R. D. T. Clinic Hospital, Dadar		
52	195	Fire brigade, Dadar	Chawl	
53	195	Labour Camp, 7 tenements, Naigaon	Chawl	
54	195	Naigaon Labour Camp 1 to 11 Chawls	Chawl	
55	195	Naigaon Gupte Chawl, Room No. 21,32,43		
56	195	Naigaon Room No. 25		
57	195	Ghaswala Chawl		
58	195	Naigaon 60 Tenements Building	G + 4	
59	195	Naigaon 99 Tenements Bldg. No. 2,3,4	G + 4	
60	195	Morebaug Depot		
61	195	Naigaon, Morachi Wadi ROOM No. 718/3,4,5 & 6		
62	195	Naigaon Maternity Home		
63	195	Mithawala Bunglow	G + 4	
64	195	Shindewadi Municipal School, Dadar	G + 4	
65	195	Shindewadi Municipal Court, Dadar	Ground	
66	195	Bhawani Mata Maidan		

PTO

67	195	Dadar Kalasadhana	Ground	
68	195	Dadar Rationing Office	Ground	
69	195	Parel Zaveri Building	G + 1	
70	195	Parel Repair, Drainage & SWM Chowkies below Elphiston Bridge	Ground	
71	195	Conservancy Chowky, Below Dadar Flyover	Ground	
72	195	Conservancy Chowky, St. Xavier Street, Parel	Ground	
73	195	Ibrahim Manjil, Parel	Ground	
74	195	Sadakant Dhavan Udhyan, Bhoiwada		
75	195	Parel Bhoiwada New. Municipal School		
76	195	Shettye market Bldg, Muni. School, Bhoiwada		
77	195	Parel Bhoiwada, Room No. 58, 59, & 60 (F)		
78	195	Parel Bhoiwada, Room No. 58, (F) Arya Samaj Bldg.	G + 3	
79	195	Parel Bhoiwada, Room No. 58, (F) Kannad School	Ground	
80	195	Shivlal Patra Chawl No. 1 to 4	Ground	
81	195	St. Xavier Ground		
82	195	Conservancy Chowky, Naigaon	Ground	
83	195	Abbas patra Chawl, Parel		
84	195	Narayan Bldg. Room No. 42, Naigaon	G + 2	
85	197	Shivaji Nagar Vasahat, Sewree	G + 1	

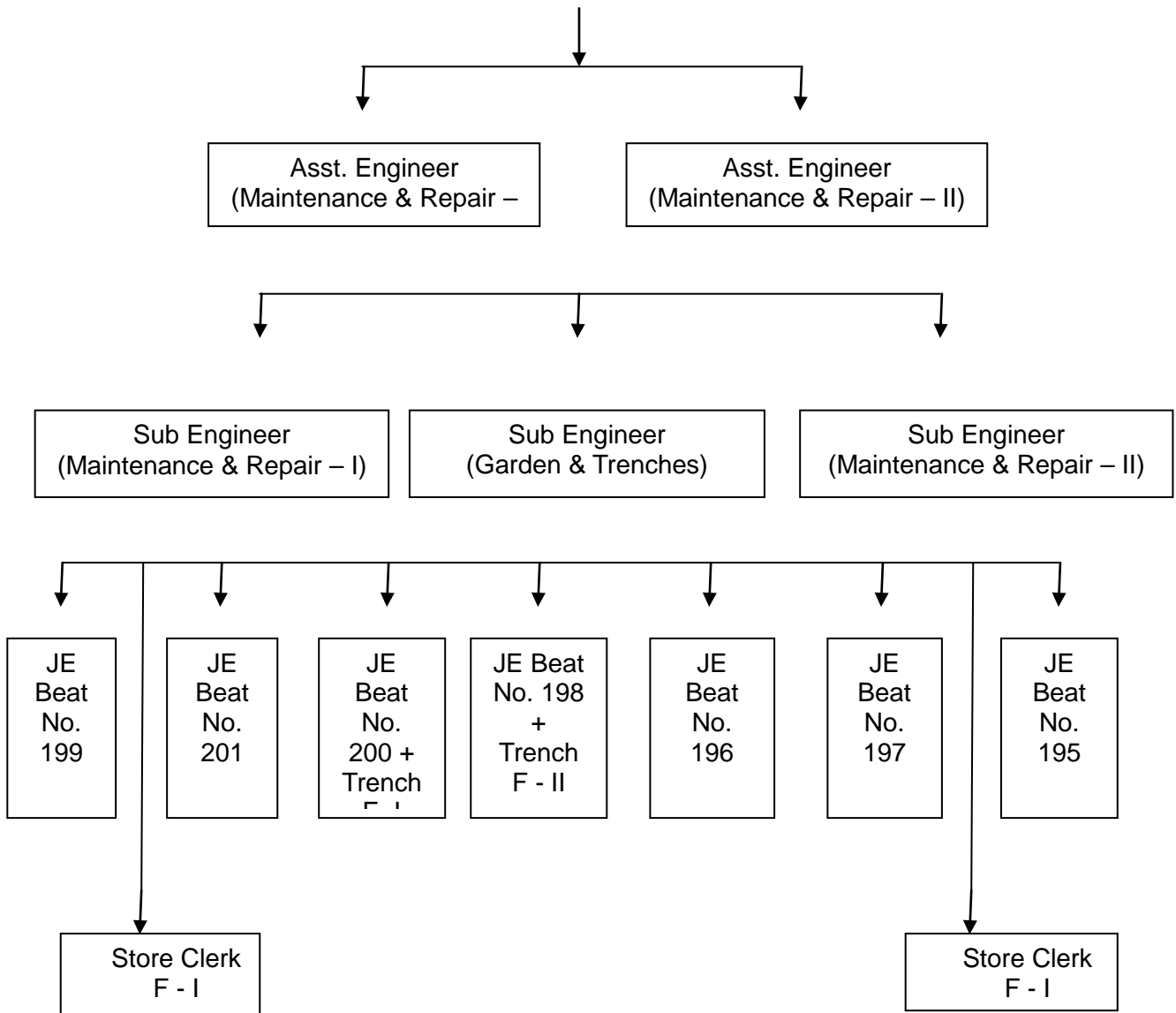
PTO

86	197	Gulmohar Vasahat, Sewree	G + 3	
87	197	50 Tenament, Bhoiwada	G + 3	
88	197	2 October CHS,	G + 4	
89	197	Sewree Muni. Kannad School Sewree	G + 3	
90	197	Baradevi Muni. School,	G + 4	
91	197	G.T.B. Hospital Vasahat, Parel	Ground	
92	197	Waghreshwari Muni. Vasahat		
93	197	Bhoiwada Village		
94	197	Bahadurji Block, GTB Hospital, Sewree	G + 4	
95	197	Sewree Cementary, Sewree		
96	197	Power Laundry, Parel	G + 1	
97	198	B.I.T. Chawl No. 01 to 06	G + 3	
98	198	72 Tenament A, B & C	G + 4	
99	198	50 Tenament, Peru Compound, Lalbaug	G + 4	
100	198	Peru Chawl No. 01 to 05, Lalbaug	G + 2	
101	198	Koli Chawl, Parel	G + 1	
102	199	Omkar Sadan, A & B Wing, Lalbaug	G + 7	
103	199	Sai Sadan, 6 Chawls Dr. S. S. Rao Rd Lalbaug	Ground	
104	199	S.P. Shed Chawl, Parel Village, 3 Chawls	Ground	
105	199	Ambewadi Muni. Dispensary, Kalachowky	Ground	

PTO

106	199	V. Shantaram Health Post, Parel	Ground	
107	199	H.E.'s Staff Quarters, Parel Village	G + 3	
108	199	Rat Diffusion Centre, Sewree	Ground	
109	199	Saibaba Muni. School, Parel	G + 3	
110	199	C.J.Shah Market, Lalbaug	G + 2	
111	199	Kubergally, Parel Village	G + 3	
112	199	Putlabai Chawl, Lalbaug	G + 2	
113	200	Chandika Primary School, Sewree	Ground	
114	200	Abhyudaya Nagar Muni. School, Kalachowky	G + 3	
115	200	Zakeria Bunder Muni. & Urdu School, Sewree	G + 1	
116	200	Jijamata Market, Kalachowky	Ground	
117	200	Abhyudaya Nagar Health Post	G + 1	
118	200	Ram Tekdi Dispensary	G + 1	
119	200	Golanji Hill Staff Quarters, Parel	G + 3	
120	200	Abhyudaya Nagar Bldg. No. 07 Kalachowky	G + 4	
121	201	27 Tenaments, Sewree	G + 3	
122	201	Sewree Koliwada, Sewree		
123	201	Sewree Koliwada, Muni. School Sewree	G + 1	
124	201	P.T.R. Muni. School Sewree	G + 2	
125	201	Sewree Fire Station, Cotton Green	G + 1	
126	201	Khimji Vishram Chawl, 3 rd Floor, Sewree	G + 3	

Organization's structural Chart of Office of Assistant Engineer (Maintenance & Repair) F/South Ward



Designation	RD Roller driver	Mistry	Painter	Mason	Carpenter	Mukadam	Labour s	Plumber	Roller Cleaner	Chunnawala
F1	1	2	1	4	1	8	92	2	1	1
F2	0	5	4	4	3	7	118	5	0	1

Department – Asstt. Engineer (Maint)				
Sr. No.	Post	Scheduled Post	Occupied	Vacant
1	Assistant Engineer	2	1	1
2	Sub Engineer	2	2	Nil
3	Junior Engineer	7	6	1
4	Labours	139	128	11
5	Labours (Electric)	32	22	10
6	Mistry(I)	4	2	2
7	Mistry(II)	5	1	4
8	Carpenter (I)	3	1	2
9	Carpenter(II)	11	1	10
10	Carpenter(III)	3	0	3
11	Mason(I)	1	0	1
12	Mason(II)	15	4	11
13	Mason(III)	5	1	4
14	Penter(II)	3	2	1
15	Mukadam	2	1	1
16	Plumber(I)	1	0	1
17	Plumber(II)	9	6	3
18	Chunawala	2	2	0
19	Vljtantri(I)	2	2	0
20	Vljtantri(II)	1	1	0
21	Wireman(I)	2	1	1
22	Wireman(II)	1	1	0
23	Wireman(III)	2	0	0
24	Lift Operator	4	1	3

SECTION 4 (1) (b) (ii)

The powers of officers and employees in the office of Assistant Engineer (Maintenance & Repair)

A – Financial Powers

Sr. No.	Designation	Powers-Financial	Under which legislation / rules / orders / GRs	Remarks
1	Assistant Engineer (Maintenance & Repair)	Rs.3000/-	As per the circular no: CA/FRD/I/48, dated : 31/01/2013	
		Rs. 3,00,000/-	--	To scrutiny of Estimate
2	Sub Engineer (Maintenance & Repair)	Nil	N.A.	
3	Junior Engineer (Maintenance & Repair)	Nil	N.A.	

SECTION 4 (1) (b) (ii)

The powers of officers and employees in the office of Assistant Engineer (Maintenance & Repair)

B - Administrative Powers

Sr. No	Designation	Powers -Administrative	Under which legislation / rules / orders / GRs	Remark
1	Assistant Engineer (Maintenance & Repair)	Please refer to Delegation of powers to Asstt. Engineer (Pg. No___)	1. MMC Act 1888 2. MRTP Act 1966	
2	Sub Engineer (Maintenance & Repair)	Please refer to Delegation of powers to Sub Engineer on (Pg. No___)	1. MMC Act 1888 2. MRTP Act 1966	
3	Junior Engineer (Maintenance & Repair)	Please refer to Delegation of powers to Junior Engineer on (Pg. No___)	1. MMC Act 1888 2. MRTP Act 1966	

SECTION 4 (1) (b) (ii)

The powers of officers and employees in the office of Assistant Engineer (Maintenance & Repair)

C – Magisterial Powers

Sr. No.	Designation	Powers - Magisterial	Under which legislation / rules / orders / GRs	Remarks
1	Assistant Engineer (Maintenance & Repair)	Nil	N.A	
2	Sub Engineer (Maintenance & Repair)	Nil	N.A	
3	Junior Engineer (Maintenance & Repair)	Nil	N.A	

SECTION 4 (1) (b) (ii)

The powers of officers and employees in the office of Assistant Engineer (Maintenance & Repair)

D - Quasi Judicial Powers

Sr. No.	Designation	Powers- Quasi Judicial	Under which legislation / rules / orders / GRs	Remarks
1	Assistant Engineer (Maintenance & Repair)	Appointed as Public Information Officer under RTI Act,2005	Circular No. MOM/8957 dtd: 02.01.2006	
2	Sub Engineer (Maintenance & Repair)	Nil	N.A	
3	Junior Engineer (Maintenance & Repair)	Nil	N.A	

SECTION 4 (1) (b) (ii)

The powers of officers and employees in the office of Assistant Engineer (Maintenance & Repair)

E – Judicial Powers

Sr. No.	Designation	Powers - Judicial	Under which legislation / rules / orders / GRs	Remarks
1	Assistant Engineer (Maintenance & Repair)	Nil	N.A	
2	Sub Engineer (Maintenance & Repair)	Nil	N.A	
3	Junior Engineer (Maintenance & Repair)	Nil	N.A	

Section 4 (1) (b) (ii)

The duties of officers and employees in the office of Assistant Engineer (Maintenance & Repair)

ASSISTANT ENGINEER (MAINTENANCE & REPAIR)

Asstt. Engineer (Maintenance & Repair) of the ward work as per Mumbai Municipal Act, 1888, Maharashtra Regional & Town Planning Act, 1966. His work includes repairs and maintenance of Municipal Roads, Footpath, Ward Offices, Staff Quarters, Estate properties, Municipal Chowkies, Roads, Depots, Maternity Homes, Dispensaries, PSC Blocks, Municipal Cemeteries, Fire Brigade, Schools Welfare Centre, Conservancy Chawls, either departmentally or through the e-tendering. He Issues Trench permission, Ganpati Mandap, Social, Regional Mandap Permission, Shooting Permission, acquire setback area of the road & merge the same into the Road, remove Bottleneck, demolish unauthorized encroachments on Municipal Roads, Footpath & Municipal properties.

Assistant Engineer (Maintenance & Repair) of the ward is responsible to Assistant Commissioner of the Ward and Zonal Dy.Municipal Commissioner for day-to-day work of the department in respect of administrative and policy work. He is also responsible to Ward Executive Engineer in respect of technical matters..

Asstt. Engineer (Maintenance & Repair) of the ward is assisted by Junior Engineer & Sub-Engineers to execute daily work. Respective Roads & Repairs Labour, Mukadam, Mistry, Carpenter, Mason, Plumber etc. help Junior Engineers & Sub-Engineers of the department to attained day to day complaints received.

Asstt .Engineer (Maintenance & Repair) of the Ward executes following duties/works from his staff working under his control:-

1. Exercise full control over the executive as well as the clerical and labour staff working in his section and ensure that all of them function efficiently.
2. Issuance of Trench permissions to various utilities as wel as to various departments of MCGM.
3. Issuance of Film shooting permission on Municipal Roads & properties.
4. Issuance of Ganpati Mandap/Navratri/social /religious permission on Municipal Roads & properties.
5. To acquired setback , bottle neck & Road Line.
6. To remove the encroachments on roads with the help of Sub Engineers and Jr. Engineers.
7. To supervise the work of store supervisor store clerk and the labours in the store and insure smooth functioning of the store.
8. To ensure that the necessary information is furnished to the concerned officers, in time and to take action on the defaulting staff, in case of delay.
9. To put up indents for the store item after discussion with the Sub Engineers and arrange for the requisite stock and to check for its quality and quantity. Material Checking norms.
 - 25 % of the store items, once in three months
 - 25 % of the depot items, once in three months
 - To dispose off the scrap material by following due procedure.

10. To carry out inspection to assess the condition of major roads.
11. To ensure prompt disposal of the complaints. To check the registers and daily diaries, at least fortnightly and monthly, respectively.
12. To exercise control on the municipal funds available, with the help of Head Clerk (Expenditure) and distribute the said funds among the Sub Engineers, appropriately and make them responsible for the utilization of funds.
13. To implement the orders issued by higher authorities.
14. To take appropriate action on the unauthorized constructions, detected on municipal roads & footpath.
15. To take timely action of propping, cordoning and demolition of dilapidated municipal buildings. To serve demolition notices on receipt of orders from the Executive Engineer or higher authorities.
16. To check at least 20 % of mass supply of materials and the contract bills. To check the estimate pertain to the repairs of municipal buildings, roads, etc. prepared by the Jr. Engineers & Sub Engineers.
17. To accept and serve notices under various Municipal Acts and take necessary action in the matter.
18. To visit major works in the ward at least once in a week.
19. To maintain the municipal properties and other buildings in the purview of the Estate Department (e.g. School, Hospitals, etc.)
20. To co-ordinate with the Law officers as regards the Court-case lodged by the MCGM or the matters against MCGM.
21. To get dilapidated municipal building vacated with the assistance of Police.
22. To visit the sites where labourers work and check on mustering once a month.
23. To co-ordinate with Central Agency as regards major repairs of municipal properties and maintenance of major roads.
24. To attend Ward Committee meetings in the ward office.
25. Review of SAP Complaints
26. Review of MCL A/B/C.
27. Review of MC-P.G. Cases
28. Review of Outstanding Audit Notes (Once monthly with MCA staff)
29. Review of pending Union problems (Once in Two months)
30. Enquiry procedure.
31. To maintain Daily Diary.

To execute above mentioned works Labours, Mukadams, Mistry, Junior Engineers Sub-Engineers inspect their respective sub-sections and report to the Asstt. Engineer (Maintenance & Repair) of the ward. Based on these reports, further necessary actions are taken by the Asstt. Engineer and the Asstt. Commissioner of the ward and under guidance of the Ward Executive Engineer in case of technical matters.

Following registers are maintained by the office of the Asstt. Engineer (Maintenance & Repair) of the ward :-

1. Notice Register
2. Demolition Register
3. Property Register
4. Set back Register
5. R.T.I. Register
6. MCL A/B/C Register
7. Mandap Permission Register
8. M.C.A. Audit Register
9. F.R.D. Audit Register
10. P.R.D. Audit Register

DUTIES OF SUB-ENGINEER (MAINTENANCE & REPAIR)

- 1) He shall be subordinate to the Asstt. Engineer and shall carry out their orders in general.
- 2) Supervision on departmental works.
- 3) To supervise each work under him at the start, during execution, completion and frequently as necessary.
- 4) Supervision on Funds available under various budget heads.
- 5) Timely submission of payments, bills and adjustments.
- 6) Site visit for major faults in the Municipal Buildings
- 7) Consolidation of revenue and outstanding requisition.
- 8) Supervision on employee muster books in order to see that the staff reports on duty in time and the fault entries are not made.
- 9) To check leave and service record and "Dead Stock" register and get them updated.
- 10) To ensure timely action in Court matters and order.
- 11) He shall draft replies to the complaints or references received in his section.
- 12) He shall attend the Courts as and when required for giving evidence helping the Sub. Engineer in conduction cases etc.
- 13) To take action against unauthorized structures / unauthorized developments on Municipal lands etc. as per M.M.C.Act and M.R.T.P.Act and as per the policy guidelines issued by time to times by the administration.

To exercise, perform and discharge duties entrusted under Section 68(Municipal officers may be empowered to exercise certain powers, etc, of the Commissioner.) of M.M.C. Act as per the authority issued by Zonal D.M.C

- 1) He shall attend the various functions organized by the administration such as Disaster Management Plan, Swachhata Abhiyan, Anti Flooding Duties, Mahapaur Daud, Cleansing Camps, Advance Locality Management etc.
- 2) To maintain Daily Diary.
- 3) To maintain various registers such as :-
 1. Notice Register
 2. Demolition Register
 3. Property Register

4. Set back Register
5. R.T.I. Register
6. MCL A/B/C Register
7. Mandap Permission Register
8. M.C.A. Audit Register

DUTIES OF JUNIOR -ENGINEER (MAINTENANCE & REPAIR)

- 1) He shall be subordinate to the Asstt. Engineer & Sub Engineer and shall carry out their orders in general.
- 2) Supervision on departmental works.
- 3) To supervise each work under him at the start, during execution, completion and frequently as necessary.
- 4) Supervision on Funds available under various budget heads.
- 5) Timely submission of payments, bills and adjustments.
- 6) Routine site visit in his jurisdictional area.
- 7) Attending Site chowky and control the labours working under him.
- 8) To check leave and service record and "Dead Stock" register and get them updated.
- 9) To ensure timely action in Court matters and order.
- 10) To carry out joint inspection along with various utilities.
- 11) He shall draft replies to the complaints or references received in his section.
- 12) He shall attend the Courts as and when required for giving evidence helping the Sub. Engineer in conduction cases etc.
- 13) To take action against unauthorized structures / unauthorized developments on Municipal lands etc. as per M.M.C.Act and M.R.T.P.Act and as per the policy guidelines issued by time to times by the administration.
- 14) To exercise, perform and discharge duties entrusted under Section 68 of M.M.C.Act as per the authority issued by Zonal D.M.C
- 15) He shall attend the various functions organized by the administration such as Disaster Management Plan, Swachhata Abhiyan, Anti Flooding Duties, Mahapaur Daud, Cleansing Camps, Advance Locality Management etc.
- 16) To maintain various registers such as :-
 1. Notice Register
 2. Demolition Register
 3. Property Register
 4. Set back Register
 5. R.T.I. Register

6. MCL A/B/C Register
7. Mandap Permission Register
8. M.C.A. Audit Register

Section 4 (1) (b) (ii)

DELEGATION OF POWERS TO ASSISTANT ENGINEER

Under Section 68 of the Mumbai Municipal Corporation Act 1888 as amended up to date, Asstt Engineer (Maintenance & Repair) is hereby empowered to exercise, perform and discharge under the control and subject to the revision of the Commissioner, the several powers, duties and functions conferred or imposed upon or vested in the Commissioner by the several Sections, Sub-Sections and Clauses of the said Act herein below mentioned :-

EXPLANATION :- The entries in the second column of the below table headed 'Nature of powers' etc. are not intended as definitely described in Sections, Sub-Sections and Clauses mentioned in the first column or even as abstracts of those sections, sub-sections and clauses, the numbers of which are given in the first column.

Sections	Nature of Powers, Duties and Functions delegated
84 & 85(1)	(e) Grant Casual Leave to the inferior staff working under him upto the limit allowed by any rules for the time being in force. (f) Grant leave without pay admissible under the Rules to the Labour staff. To appoint when necessary, persons to act in place of employees who are absent on leave.
112	To receive money in respect of any matter pertaining to the City Engineer's Department.
113(3)	(a) To incur expenditure on office contingencies (except furniture) upto Rs.3000/- per item. (b) To make cash purchase and payment of bills out of imprest upto Rs.3000/- and payment of telephone call bills for any amount.
222(1) & (2)	To construct, repair or alter Municipal drains and to enter upon land for the purpose.
228	To grant permission and prescribed conditions as to communications with Municipal drains.
234	Determining details of drains and drainage fittings or cesspools for new buildings.
240	Granting permission for the construction of the drain so as to pass beneath building.
243(2)	Making requisition in respect of taps, covering and means of ventilation for drain and cesspools.
244(1)(4) 246-A	To erect shafts or pipes for ventilating drains and cesspools. To permit the construction of water closets and privies.
247	Prescribing water closet and other accommodation in building newly created or re-erected.
248(1)(c)	Requisition to enforce provision of water closet or privy or urinal or bathing or washing place etc.
251	Determining details regarding water closets under Clauses (a)(d) and (e).
251(B)	To determine use of places of bathing or washing clothes or domestic utensils.
253	Inspection and examining drains, etc. not belonging to the Corporation.
254	Opening ground etc. for inspection and examination under Section 253.
255	Reinserting the ground etc. opened for purposes of inspection.
257	Making requisition on owners of premises as provided in Sub-Section (1) for doing the work mentioned in Sub-Section (2).
258(a)(b)(c)	Prohibition of acts, contravening the provisions under Chapter IX of the M.M.C.Act.
259-A	Requiring any person to employ a Licensed Plumber to execute a work to furnish the name of a Plumber and to put up completion certificate by the Licensed Plumber.
298(2)	To take possession or and clear the lands under this section.

311	To require owners to alter ground floor doors, etc. opening outward.
313(1)	To grant permission for placing stalls, chairs and benches, boxes, ladder, bales etc. on footpath and streets.
314	To remove obstructions etc. on streets made contrary to section 312 or 313.
317	To permit booths on festivals in certain streets.
321(2)	To prevent removal, etc. without permission of fences etc. erected in the streets, while works are in progress.
322	To prevent opening, etc. of streets unless done with permission and to give such permission.
324	To restore streets opened or broken up when the person responsible fails to do so.
325	To require person permitted to open streets to provide for diversion of traffic etc.
326(2)&(3)	To regulate hoarding etc. in streets.
329	To require and secure adoption of measures to protect and enclose dangerous places.
333(4)	Manner of laying gas pipes.
338	To require certain documents on receipt of Notice under Section 337.
339	To refuse to accept plans, etc. not signed by the Licensed Surveyor.
340	To require, further, particulars and details
342	To receive notices of intentions to make additions etc. to building.
343	To require certain documents and particulars on receipt of Notice under Section 342 and to refuse to accept plans, etc. not signed by Licensed Surveyor.
344-A	Supervision of buildings and work.
345	To intimate approval of work of which notice is received.
346(1) 347(A)(B)& (C)	To intimate disapproved of such work. Prohibiting user of a non-residential buildings or chawl to a residential one and of a residential building or chawl to that of a godown, warehouse, workshop, workplace, factory, stable or a motor garage and prohibiting making or causing any alterations in an existing building originally constructed or authorized to be used for human habitation for the purpose of using it or causing it to be used as a godown, warehouse workshop, workplace, factory, stable or motor garage.
348(1)(a)(b) & (c)	Provision as to buildings, which are to be newly erected.
349 350	To refuse permission for walls, coverings, etc. of inflammable materials and to require removal of such wall or covering. To inspect buildings in course of erection, alterations, etc
353	To specify any matter in contravention of Act of Bye Law within three months after completion.
353(A)	To grant completion certificate and permission to occupy or use.
354	To require removal etc. of ruinous or dangerous structures and to temporarily secure etc. repair etc.
354A(1)	To issue a written notice to stop within the specified period the erection of the work unlawfully carried on or commenced upon any premises.
354A(2)	To direct removal of person unlawfully carrying on the erection of buildings or the execution of any such works described in Section 342.
368	To require owners to provide receptacles of a size for collection of dust, ashes, refuse, rubbish and trade refuse, etc.
374	To inspect building or premises for the purpose of ascertain sanitary conditions thereof.
375	To require cleansing and lime washing of any building etc.
375-A	To require the owners to remove buildings, materials or debris, etc. accumulated due to house collapse etc.
377(1-A)	To require cleansing, clearing or enclosing any premises over grown with rank vegetation, etc.
377-A	To require the owners of the buildings to abate the nuisance arising from rainwater leaking from the roofs of the building or to prevent its recurrence.
380	To require removal, alteration etc., of unsanitary huts and sheds.

381	To require the owners of the building to abate the nuisance arising out of the defects.
383	To require cutting and looping of hedges, trees, etc. in certain cases and to take measures for protection of public.
394	To prohibit certain articles to be kept and certain trades processes and operation to be carried out without a license to exercise all other powers in respect of the things liable to be seized, destroyed etc, to prevent danger or nuisance.
396 Sub-section (1)	To inspect at any time, by day or by night without notice any premises used for manufacture as mentioned in Section 394 and any premises in which a furnaces employed for the purpose of manufacture and into any bake house to see whether any provision or this Act or any condition of any license is being contravened and as to whether any nuisance is created.
479(5)	To require production of licenses or written permission.
488	To enter into or upon buildings or and with or without Assistant or workment (1) for the purpose of exercising performing or discharging, the powers, duties or functions hereinabove delegated with reference to the sections above specified. The delegation of powers of entry under Section 488 is to be subject in each case to strict observance of and compliance with the provisions and conditions prescribed by Clauses (a), (b), (c) and (d) so far as applicable.
489	To take measures and execute work, etc, failure of compliance with requisitions or orders under provisions of the Act.
492(2)(a)	To call on occupiers to disclose rents for purpose of determining question of liabilities to pay expenses in certain cases.
517(1)(a)	To take or withdraw from proceedings against persons charged with offences against the Act etc. as described in Sub-Clauses (i),(ii) and (iii) of Clause (a).

Section 4 (1) (b) (ii)

DELEGATION OF POWERS TO SUB ENGINEER

Under Section 68 of the Mumbai Municipal Corporation Act 1888 as amended up to date, Sub -Engineer (Maintenance & Repair), Municipal Corporation of Greater Mumbai is hereby empowered to exercise, perform and discharge under the control and subject to the revision of the Commissioner, the several powers, duties and functions conferred or imposed upon or vested in the Commissioner by the several Sections, Sub-Sections and Clauses of the said Act herein below mentioned:-

EXPLANATION :- The entries in the second column of the below table headed 'Brief Description of Powers to be exercised and performed' are not intended as definitions described in Sections, Sub-Sections of these sections, but are inserted merely as reference to the subjects of the sections, sub-sections and the numbers of which are given in the first column.

Sections	Nature of Powers, Duties and Functions delegated
84 & 85(1)	a) Grant Casual Leave to the inferior staff working under him upto the limit allowed by any rules for the time being in force. b) Grant leave without pay admissible under the Rules to the Labour staff. To appoint when necessary, persons to act in place of employees who are absent on leave.
112	To receive money payments on account of the Municipal Fund and to lodge them in a bank.
222(1) & (2)	To cause to be served a notice of demand.
228	To grant permission and prescribed conditions as to communications with Municipal drains.
231	To enforce drainage of undrained premises situate within a hundred feet of a Municipal drains.
234	Determining details of drains and drainage fittings or cesspools for new buildings.
243(2)	Making requisition in respect of taps, covering and means of ventilation for drain and cesspools.
244(1)	To power affix pipes for ventilation of drains.
244(4)	To erect shafts or pipes for ventilating drains and cesspools
246-A	To permit the construction of water closets and privies.
247	Prescribing water closet and other accommodation in buildings newly created or re-erected.

248(1)(a), (b),(c)	Requisition to enforce provision of water closet or privy or urinal or bathing or washing place etc.
251	Determining details regarding water closets under Clauses (a)(d) and (e).
251(B)	To determine use of places of bathing or washing clothes or domestic utensils.
253	Inspecting and examining drains, etc. not belonging to the Corporation.
254	Opening ground etc. for inspection and examination under Section 253.
255	Reinstating the ground etc. opened for purposes of inspection.
257	Making requisition on owners of premises as provided in Sub-Section (1) for doing the work mentioned in Sub-Section (2).
258(a)(b)(c)	Prohibition of acts, contravening the provisions under Chapter IX of the M.M.C.Act.
259-A	Requiring any person to employ a Licensed Plumber to execute a work to furnish the name of a Plumber and to put up completion certificate by the Licensed Plumber.
314 (a), (b), (c)	To remove without notice things placed or deposited upon any place or attached or suspended in contravention of Clause (a) or Clause (c) or Sub-section (1) or Section 313.
317	To permit booths on festivals in certain streets.
322	To prevent opening, etc. of streets unless done with permission and to give such permission. (Except for newly constructed roads or capital roads)
322(3)	To remove without notice any building materials or any scaffolding or any temporary erection or any posts, bars, rails, boards or other things by way of enclosure which have been deposited or set up in any street without the permission or authority specified in Sub-section (1) or which having been deposited or set up with such permission or authority, have not been removed within the period specified in the notice issued under Section (2).
350	To inspect buildings in course of erection, alterations, etc.
354	To require removal etc. of ruinous or dangerous structures and to temporarily secure etc. repair etc.
354A(1)	To issue a written notice to stop within the specified period the erection of the work unlawfully carried on or commenced upon any premises.
354A(2)	To direct removal of person unlawfully carrying on the erection of buildings or the execution of any such works described in Section 342.
368	To require owners and occupiers to collect and deposit dust etc.
374	To inspect building or premises to ascertain sanitary conditions thereof.
375	To require cleansing and lime washing of any building etc.
375-A	To require the owners to remove buildings, materials or debris, etc. accumulated due to house collapse etc.
377	To make requisition against the owner or occupier for removal of rank vegetation.

377-A	To require the owners of the buildings to abate the nuisance arising from rainwater leaking from the roofs of the building or to prevent its recurrence.
380	To require removal, alteration etc., of unsanitary huts and sheds.
381	To require the owners of the building to abate the nuisance arising out of the defects.
383	To require cutting and looping of hedges, trees, etc. in certain cases and to take measures for protection of public.
390 (1) (2) (3)	Regulations of factories, trades, etc.
479(5)	To require production of licenses or written permission.
488	To enter premises with assistants etc. to inspect survey and execute works

Section 4 (1) (b) (ii)

DELEGATION OF POWERS TO JUNIOR ENGINEER

Under Section 68 of the Mumbai Municipal Corporation Act as amended up to date, Junior Engineer (Maintenance & Repair) under Asstt. Commissioner is hereby empowered to exercise, perform or discharge under the control and subject to the revision of the Commissioner, the under mentioned powers, duties and functions conferred or imposed upon or vested in the Commissioner by the several Sections, Sub-Sections and Clauses of the said Act herein below mentioned :-

EXPLANATION :- The entries in the second column of the below table headed 'Nature of Powers' etc. are not intended as definitely described in Sections, Sub-Sections and Clauses mentioned in the first column or even as abstracts of those sections, sub-sections and clauses but are inserted merely as reference to the subjects of the sections, sub-sections and clauses, the numbers of which are given in the first column.

Sections	Nature of Powers, Duties and Functions delegated
231	To enforce drainage of undrained premises situate within a hundred feet of a Municipal drains.
248(1)(c)	To substitute water closet accommodation for any privy accommodation.
253	To inspect and examine all drains, ventilation shafts and pipes cesspools of house gullies, water closets, privies, latrines and urinals to which this Section applied.
254	Opening ground etc. for inspection and examination under Section 253.
255	Reinstating the ground etc. opened for purposes of inspection.
314 (a), (b), (c)	To remove without notice things placed or deposited upon any place or attached or suspended in contravention of Clause (a) or Clause (c) or Sub-section (1) or Section 313.
322	To prevent opening, etc. of streets unless done with permission and to give such permission.
350	To inspect buildings in course of erection, alterations, etc.

354	To require removal etc. of ruinous or dangerous structures and to temporarily secure etc. repair etc.
354A(1)	To issue a written notice to stop within the specified period the erection of the work unlawfully carried on or commenced upon any premises.
354A(2)	To direct removal of person unlawfully carrying on the erection of buildings or the execution of any such works described in Section 342.
368	To require owners to provide receptacles of a size for collection of dust, ashes, refuse, rubbish and trade refuse, etc.
374	To inspect building or premises for the purpose to ascertain sanitary conditions thereof.
375	To require cleansing and lime washing of any building etc.
377	To make requisition against the owner or occupier for removal of rank vegetation.
377-A	To require the owners of the buildings to abate the nuisance arising from rainwater leaking from the roofs of the building or to prevent its recurrence.
380	To require removal, alteration etc., of unsanitary huts and sheds.
381	To require the owners of the building to abate the nuisance arising out of the defects.
390 (1) (2) (3)	Regulations of factories, trades, etc.
479(5)	To require production of licenses or written permission.
483	Service of notice - To serve, issue or present or give notices, bills schedules summonses and other such document required by this act to the served upon or issued or presented or given to any person.
488	To enter into or upon buildings or land with or without Assistant or workmen. <ol style="list-style-type: none"> 1. For the purpose of exercising performing or discharging, the powers, duties or functions hereinabove delegated with reference to the sections above specified. 2. For the purpose of carrying into effect under Section 489 any requisition or order (not only complied with) made by written no-

	<p>tices by the Commissioner; under either of the following Section or Sub-section namely Section 257(1).</p> <p>Section 308 Sub-section(2)309, Sub-section(1), Section 311, Section 315(1), Section 325, Section 326(3), Section 329(1), Section 349, Section 351, Sub-section(2), Section 353, Section 354, Section 380 or Section 383(1).</p> <p>3. For the purpose of leveling, metalling or paving, sewerage, draining, channeling and lightening any private street which the Commissioner with the sanction of the Standing Committee may be empowered under the provision of Section 305 level, metal or pave sewer drains, channel or light to his satisfaction or (1) for the purpose of removing altering or pulling down the building or work which the Commissioner with the approval of the Standing Committee may be empowered under the provisions of Sub-section (2)</p> <p>of Section 351 to remove alter or pull down (5) for the purpose of Section 381(2) to fill up cover over or drain off well, provided that a delegation of power of entry under Section 4888 is to be understood so be subject in each case to strict observance of and compliance with the provisions and conditions prescribed by Clauses (a),(b),(c) and (d) so far as applicable.</p>
--	--

Section 4 (1) (b) (ii)**Supervision Norms**

Sr.No.	Designation	Supervision Norms
1	Asstt. Engineer (Maint)	To check at least 20 % of mass supply of materials and the contract bills. To check the estimate pertains to the repairs of municipal buildings, roads, etc. prepared by the Jr. Engineers & Sub Engineers.
2	Sub Engineer (Maint)	To supervise each work under him at the start, during execution, completion and frequently as necessary.
3	Junior Engineer (Maint)	To supervise each work under him at the start, during execution, completion and frequently as necessary.

Section 4 (1) (b) (iii)

The procedure followed in the decision-making process, including channels of supervision and accountability in the office of Assistant Engineer (Maintenance & Repair)

NAME OF THE ACTIVITY:- Action against unauthorized encroachments detected on roads / footpath.

Related provisions:-

Name of the Act/ Acts :- MMC Act 1888 section 314

Rules:-

Govt. Resolutions:-

Circulars:-

Office Orders:-

Sr. No.	Activity as said above	Steps involved	Time Limit	Authority role and responsibility of the employee / officer in connection with each activity. (mention designation)	Remark
1	Complaint Received from Public, Staff, from higher authority and others.	1. Site visit	Within 24 Hours	JE / SE	
		2. Inspection Report		Junior Engineer	
		3. Issue 314 Notice if required	Within 7 days	J.E./ S.E. /A.E.	
		4. Arrange demolition by taking order from Asstt. Commissioner.	After expiry 48 Hours from order	J.E./ S.E. /A.E.	
		5. Entry in demolition register		J.E.	
		Demolition report		J.E./S.E.	
		Filing of W.S/A.I.R. in court, in case of stay granted by court restraining MCGM to take further action.	As directed by legal dept.	Junior Engineer / Sub Engineer	

NAME OF THE ACTIVITY: - BOTTLENECK :- Bottleneck means construction, narrowing, obstruction, congestion, block, partially/total blockage which leads to traffic congestion, traffic clogging problems started precipitating.

Related provisions:-

Name of the Act/ Acts :-

Rules:-

Govt. Resolutions:-

Circulars:- 1) AMC /ES/D 168 (Ch E/1876/DPC/Gen) Dated 25.02.2004

2) AMC/ES/9141/II dt.14.10.11

Office Orders:-

Sr. No.	Activity	Step involved	Time Limit	Authority role and responsibility of the employee / officer in connection with each activity. (mention designation)	Remark
1	Bottleneck				
		Preparation of Priority List of Bottlenecks.		Asstt. Commissioner/ A.E. (M & R) of Ward	
		Demarcation of Roads Sanctioned RL, Dp Roads	Within 15 Days from the receipt of the information received from the Asstt. Commissioner	E.E. (T.C.) / A.E.(Survey) E.E. (D.P.) / A.E.(Survey)	

		Collection of Basic Data		J.E. (M & R)	
		Preparation of Inventory		J.E.(M & R) / S.E. (M & R)	
		Documents checking		S.E.(M & R) / A.E. (M & R)	
		Proposals Scrutiny and submission to Competent Authority		Ward E.E.	
		Sanction of Competent Authority		Additions M.C.'s of Zone	
		Removal of Bottleneck		Asstt. Commissioner/ A.E. (M & R) of Ward	
		Roads/ S.W.D. Developments		Ch. Engg (Roads)/Ch. Engg (S.W.D.)	
		Final Compliance to Zonal DMC/Jt. MC's		Asstt. Commissioner of Ward	

NAME OF THE ACTIVITY:- E-tendering

Related provisions:-

Name of the Act/ Acts :-

Rules:-

Govt. Resolutions:-

Circulars:-

Office Orders:-

Sr. No.	Activity	Step involved	Time Limit	Authority role and responsibility of the employee / officer in connection with each activity. (mention designation)	Remark
1	E-tendering	Preparation of Estimate		J.E.	
		Administrative approval		Ward Committee or DMC etc.	
		Estimate is uploaded in SAP System in A.E. or SE's ID (R3 Module)		S.E.	
		BID is created in SRM Module E tendering.		S.E.	
		BID is forwarded to E.E. Ward for publishing on Municipal Website.		A.E. /S.E.	
		Publish the Tender (SRM E tender login Approval)		Ward E.E.	
		List of Bidder and letter to successful 1 st Bidder with 5 % contract amount to		MCGM Website & A.E./S.E.	

		deposit with MCGM.			
		PO is created in SAP Module.		A.E.	
		Release P.O. Amount.		Account officer	
		Create Contract in SAP System.		Ward E.E.	
		PO is generated in SAP.		A.E.	
		PO is released.		Ward E.E.	
		PO printout is taken and issued to Bidder.		A.E.	

NAME OF THE ACTIVITY:- Permission for trench

Related provisions:-

Name of the Act/ Acts:-

Rules:-

Govt. Resolutions:-

Circulars:-

- MGC/F/1835 dated 17.11.2007
- MGC/F/9974 dated 04.02.2013
- ChE/804/SR/Rds, Tr. & Br. Dated 05.02.2013
- ChE/525/SR/Roads dated
- ChE/11888/Rds/SR dated 09.03.2012
- ChE/1075/Roads dated 31.09.2012
- ChE/857/SR/Roads dated 18.02.2012
- Ch.Eng/727/SR/Rds dated 19.03.2010
- AMC/ES/8879/II dated 05.04.2013.
- Ch.E/396/SR/Rds & Tr. Dt.12.09.2013
- Ch.E/455/SR/Rds dated 09.10.2013

Office Orders:-

Sr. No.	Activity	Step involved	Time Limit	Authority role and responsibility of the employee / officer in connection with each activity. (mention designation)	Remark
1	Trench Permission	As per above circulars			

NAME OF THE ACTIVITY:- Permission for Ganapati Mandap

Related provisions:-

Name of the Act/ Acts:-

Rules:-

Govt. Resolutions:-

Circulars:-

- MDF/OD/8358/Gen datd11.06.2013
- MDF/9629/Gen dated 25.07.2008
- AA/ES/4528 dated 28.07.2008
- AA/ES/D/1971 dated 02.07.2007

AA/9269/Jahirat/201212 dated30.08.2012AMC/ES/8879/II dated 05.04.2013.

Office Orders:-

Sr. No.	Activity	Step involved	Time Limit	Authority role and responsibility of the employee / officer in connection with each activity. (mention designation)	Remark
1	Ganapati Mandap Permission	Scrutiny of documents on receipt of application.	7 days	J.E./S.E.	
		Site Inspection	7 days	J.E./S.E.	
		To demand additional documents/NOC required from applicant, if any.	Within 15 days	J.E./S.E.	
		Forward for Road Engineer's NOC.	Within 15 days	J.E./S.E.	
		To issue demand letter & permission charges after receipt of all required	Within 15 days	J.E./S.E.	

		documents.			
		To issue permission on obtaining approval from competent authority. (Permission is refused if applicant has not submitted all required documents)			

Section 4 (1) (b) (iv)

Norms set for discharge of its functions in the office of Assistant Engineer (Maintenance & Repair)

Organizational targets (Annual)

Sr. No	Designation	Activity	Financial Targets in Rs.	Time Limit	Remark
1	Asstt.Engineer (M & R)	As mentioned in Section 4 (1)(b)(ii)	There are no financial targets set for this department. As mentioned earlier the work is carried out on day to day basis.	Time limit for each activity is as mentioned in Section 4(1)(b)(iii)	
2	Sub Engineer (M & R)	As mentioned in Section 4 (1)(b)(ii)	There are no financial targets set for this department. As mentioned earlier the work is carried out on day to day basis.	Time limit for each activity is as mentioned in Section 4(1)(b)(iii)	
3	Junior Engineer (M & R)	As mentioned in Section 4 (1)(b)(ii)	There are no financial targets set for this department. As mentioned earlier the work is carried out on day to day basis.	Time limit for each activity is as mentioned in Section 4(1)(b)(iii)	

Section 4 (1) (b) (v)
The rules / regulation related with the functions of Assistant Engineer (Maintenance & Repair)

Sr. No.	Subject	G.R. /Circular / Office order. Rule no. Notification etc. date.	Remarks if any
1	Trench	<ul style="list-style-type: none"> • MGC/F/1835 dated 17.11.2007 • MGC/F/9974 dated 04.02.2013 • ChE/804/SR/Rds, Tr. & Br. Dated 05.02.2013 • ChE/525/SR/Roads dated • ChE/11888/Rds/SR dated 09.03.2012 • ChE/1075/Roads dated 31.09.2012 • ChE/857/SR/Roads dated 18.02.2012 • Ch.Eng/727/SR/Rds dated 19.03.2010 • AMC/ES/8879/II dated 05.04.2013. • Ch.E/396/SR/Rds & Tr. Dt.12.09.2013 • Ch.E./455/SR/Rds Dated 09.10.2013 	
2	Ganapati Mandap Permission	<ul style="list-style-type: none"> • MDF/OD/8358/Gen datd11.06.2013 • MDF/9629/Gen dated 25.07.2008 • AA/ES/4528 dated 28.07.2008 • AA/ES/D/1971 dated 02.07.2007 • AA/9269/Jahirat/201212 dated30.08.2012 	
3	Pothole	<ul style="list-style-type: none"> • Dy. Ch. Eng/1901/Rds(City) dated 15.06.2013 • MGC/F/1074 dated 06.07.2013 • CA/FDT/59 dated 16.03.2013 	
4	E-tendering	<ul style="list-style-type: none"> • CA/FRD/7 dated 17.05.2013 • CA/CPD/36 dated 03.11.2012 	
5	Pay & Park	<ul style="list-style-type: none"> • Dy.ChE/1380/Traffic of 23.05.2013 	
6	Shooting Permission	<ul style="list-style-type: none"> • CA/FRM/3 dated 10.04.2013 	
7	Mahatma Gandhi Pathkranti Yojana	<ul style="list-style-type: none"> • DMC/Special/OD/5468/dated06.03.2012 • DMC/Special/5447 dated03.03.2012 • AMC/ES/944/IV dated 31.03.2012 	
8	Bottleneck	<ul style="list-style-type: none"> • AMC/ES/9141/II dt.14.10.11 	

Section 4 (1) (b) (vi)

Statement of Categories of documents held in the office of Assistant Engineer (Maintenance & Repair)

Sr. No.	Subject	Type of Document file or register	File No. or Register No.	Particulars	Periodicity of Preservation (Proposed)
'C1' Class Record					
1	Demolition Register	Register		Details of demolitions of unauthorized work carried out under various sections of MMC Act	10 Years
'C' Class Record					
1.	R.T.I Register	Register		Details of application received under R.T.I.Act, replied/forwarded & transferred date.	5 Years
2	Work Orders	Documents		Details of work orders issued to contractor by department	5 Years
3	Measurement Books	Documents		Details of Measurements recorded in M.B.	5 Years
4	Payment Certificate	Documents		Details of Payments issued to the contractor	5 Years
5	Demand Notes & Permits	Documents		Details of Demand Notes & Permits issued to various utility agencies.	5 Years
6	Mandap Permission	Register		Details of Mandap Permission issued to various applicants.	5 Years
'D' Class Record					
1	Log sheets	Inward papers		Details of Applications/ complaints/ other documents received by department	01 Year
2.	Outward Register(Internal departments)	Outward papers		Details of Applications/ complaints/ other documents forwarded to Internal departments of F/South ward.	01 Year
3.	Outward Register (External correspondence)	Outward papers		Details of Applications/ complaints/ other documents forwarded to external departments of MCGM/ Other Govt. authorities and	01 Year

				correspondence with applicants/ complainants /citizens etc.	
4.	Complaint Register	Register		Orally complaint registered.	01 year
5.	RTI application & their reply (Except appeal cases)	Document		Details of application received under RTI Act & reply given to the same.	01 year
6.	First & second appeal made under RTI Act	Document		Details of First & second appeal made by applicant under RTI Act by the applicant against reply of Public Information Officer and/or order passed by First Appellate Authority	01 year
7	Monthly reports sent to various departments	Document		File papers containing monthly reports sent to various departments	01 years
8	Demolition of structures under MMC Act, MRTP Act & other action completed	Nasti		Nasti files containing papers pertaining to the notice action against structures demolished under MMC Act, MRTP Act & other actions.	01 year (after demolition)

Section 4 (1) (b) (vii)

Particulars of any arrangement that exists for consultation with the members of public in relation to the formulation of policy and implementation in the office of Assistant Engineer (Maintenance & Repair)

Sr. No.	Consultation for	Details of Mechanism	Under which legislation / rules / orders / GRs	Periodicity
1	Policy Details	Ward Committee	Nil	Once in a Month

Section 4 (1) (b) (viii)

**Statement of Boards, Councils, Committees or Other bodies of office of Asstt Engineer
(Maintenance & Repair)**

Sr. No.	Name of the committee board / council / other bodies	Composition of committee Board council other bodies	Purpose of the committee Board/ Council/ other bodies	Frequency of meetings	Whether meeting open to public or not	Whether Minutes are available to public or not	Minutes available at.
1	Advance Locality Management (ALMI)	Nil	Nil	Nil	Nil	Nil	Nil
2	Local Area Citizens Committee (LACC)	Nil	Nil	Nil	Nil	Nil	Nil
3	Local Area Citizens Group (LACG)	Nil	Nil	Nil	Nil	Nil	Nil

Section 4 (1) (b) (ix)

Directory of the officers and employees in the office of Assistant Engineer (Maintenance & Repair) F/South ward.

SR. NO.	Designation	Name of the Officers/ Employees	Cadre	Dt. Of Joining the post	Contact Details Ph/Fax/ E-mail
1	ASSTT. ENGINEER	M L RAIKWAD	B	16.03.1990	022-24114293
2	ASSTT. ENGINEER	ASIF SAFDAR HU.T.A	B	14.12.1977	022-24114293
3	SUB ENGINEER	NILWARN PRADEEP J	B	01.10.1981	022-24114293
4	SUB ENGINEER	SANGEETA B. USHIRKAR	B	19.04.2007	022-24114293
5	SUB ENGINEER	NAIK MANESHCHANDRA P	B	05.06.1981	022-24114293
6	JUNIOR ENGINEER	KAKAD SHIVNARAYAN N.	C	06.09.2006	022-24114293
7	JUNIOR ENGINEER	JADHAV NITIN D.	C	29.03.2007	022-24114293
8	JUNIOR ENGINEER	DHAMANKAR P.P	C	17.07.2008	022-24114293
9	JUNIOR ENGINEER	MANE MILIND DINKAR	C	06.07.2009	022-24114293
10	JUNIOR ENGINEER	ZIJORDE SANTOSH S.	C	01.07.2009	022-24114293
11	JUNIOR ENGINEER	THORAT KAILAS NATHA	C	06.06.1994	022-24114293
12	JUNIOR ENGINEER	GAWARI RAJENDRA MARUTI	C	22.04.2013	022-24114293
13	STORE CLERK	VEJARE GOVIND MAHADEO	C	23.11.1991	022-24114293
14	STORE MUKADAM	VACANT	D		022-24114293
15	CLERK	KADAM MILIND PANDURANG	C	01.07.1993	022-24114293
16	MUKADAM	KAMBALE BABAN GUNYA	D	01.10.1978	
17	MUKADAM	DHANAVDE ASHOK DHONDU	D	23.05.1981	
18	MUKADAM	REDDI MOSES RANGAPPA	D	25.05.1981	
19	MUKADAM	REVALE SUBHASH MAHADEV	D	07.01.1982	
20	MUKADAM	MADGUNDI RAMESH SAGYA	D	01.06.1994	
21	LABOURER	SAWANT KUNAL VITHAL	D	18.11.1992	
22	LABOURER	SAWANT ASHOK GANU	D	03.10.1994	
23	LABOURER	ZURALE DHONDIRAM NAGU	D	12.09.1996	
24	LABOURER	KAMBLE SONAJI SHIVRAM	D	02.12.1996	
25	LABOURER	CHAVAN TUKARAM LAXMAN	D	23.05.1981	
26	LABOURER	RAHATEKAR ASHOK VASANT	D	08.01.1982	
27	LABOURER	MAGARE BHIMRAO RAMCHANDRA	D	08.01.1982	
28	LABOURER	TALEKAR KASHIRAM P.	D	08.01.1982	
29	LABOURER	DHURI PRAKASH TUKARAM	D	08.01.1982	
30	LABOURER	PAWAR SHRIPAT SAMBHAJI	D	08.01.1982	
31	LABOURER	PAWAR RAMESH GOVIND	D	08.01.1982	
32	LABOURER	JADHAV ASHOK BHIKAJEE	D	08.01.1982	
33	LABOURER	BHOSALE MARUTI BARKU	D	12.01.1982	
34	LABOURER	JADHAV RAVINDRA P.	D	10.12.1987	
35	LABOURER	MATE SUNIL PANDURANG	D	05.01.1988	
36	LABOURER	SAKPAL ARUN KASHIRAM	D	11.09.1989	
37	LABOURER	SUKHDEO MAHENDRA BHAU	D	27.12.1990	
38	LABOURER	GAIKWAD GAUTAM LAXMAN	D	27.12.1990	
39	LABOURER	JADHAV ASHOK SHANKAR	D	27.12.1990	
40	LABOURER	GADGE NAGURAO M.	D	01.04.2005	
41	LABOURER	BHANGRE DAGADU KERU	D	24.06.2008	
42	LABOURER	PATIL SHARAD RAMCHANDRA	D	06.08.2008	
43	LABOURER	GAIKAR VIDYADHAR SHRIPAT	D	18.07.2008	
44	LABOURER	SHINDE SANTOSH MADHUKAR	D	31.10.2009	
45	LABOURER	KOLWATE AJAY LAXMAN	D	14.12.2011	
46	LABOURER	KADAM AMIT MAHENDRA	D	14.02.2013	
47	MISTRY-1	GAVANKAR CHANDRAKANT V	D	23.05.1981	
48	MISTRY-1	KUNCHIKURVE SURYAKANT R	D	01.03.1994	
49	PAINTER-II	DEVRUHKHAKAR SANTOSH R	D	01.12.1987	
50	MASON-II	DAVID S CHENNAYYAGERI	D	23.05.1981	
51	MASON-II	SHINDE VIJAY GOPAL	D	08.01.1982	
52	MASON-II	KHANDEKAR TATYABA SUKHDEO	D	01.09.1990	
53	MISTRY-II	HANUMANTA ERAPPA	D	23.05.1981	
54	MISTRY-II	KOKARE ANANT KONDIBA	D	09.11.1991	
55	CARPENTER-II	KANGANE DHONDU SITARAM	D	23.05.1981	
56	MUKADAM	YADAV RAMCHANDRA HARI	D	23.05.1981	
57	MUKADAM	MAIL RAJARAM SONU	D	23.05.1981	
58	MUKADAM	DHUMAK ATMARAM SHRIPAT	D	23.05.1981	
59	MUKADAM	TALEKAR LAXMAN SHANKAR	D	08.01.1982	
60	MUKADAM	SAWANT ANANT PANDURANG	D	27.04.1982	

PTO

61	MUKADAM	KURNE ARUN LAXMAN	D	29.10.1984	
62	MUKADAM	JADHAV MOHAN VITHAL	D	01.12.1987	
63	WOMAN LAB.	BAIT DARSHANA DHANAJI	D	24.10.1994	
64	WOMAN LAB.	REDDI CELIN SAMUAL	D	06.09.1999	
65	WOMAN LAB.	JADHAV SUMITRA SUNIL	D	08.05.2000	
66	WOMAN LAB.	SAWANT ADITI ALANKAR	D	01.02.2010	
67	WOMAN LAB.	JAYALAXMI VYANKATESH	D	20.04.2010	
68	LABOURER	PAGAR MAHESH NATHURAM	D	10.11.1992	
69	LABOURER	R KANNAN RANGASWAMY	D	04.11.1992	
70	LABOURER	GOSAVI SATYAVIJAY AMRNATH	D	23.05.1981	
71	LABOURER	KADAM DILIP YESHWANT	D	08.01.1982	
72	LABOURER	BHOGALE RAWJI SHRIDHAR	D	09.01.1982	
73	LABOURER	SK ABDULRAJAK DADAMIYA	D	12.01.1982	
74	LABOURER	VAGELA VINODA VITHL	D	13.01.1982	
75	LABOURER	JADHAV ASHOK DHAKOO	D	27.04.1982	
76	LABOURER	KUNCHIKURVE ASHOK YELLAPA	D	20.10.1984	
77	LABOURER	VADAL ANANT MAHADEO	D	20.10.1984	
78	LABOURER	MOSAMKAR SURESH DHONDU	D	20.10.1984	
79	LABOURER	BANSODE BHASKAR R	D	20.10.1984	
80	LABOURER	SUWARE TUKARAM SHIWA	D	27.10.1984	
81	LABOURER	LAXMAN TULSHYA	D	12.11.1984	
82	LABOURER	KADAM ANANT SHIVRAM	D	23.04.1985	
83	LABOURER	SUWARE CHANDRAKANT S	D	19.11.1988	
84	LABOURER	PAWAR GAUTAM DADU	D	18.11.1988	
85	LABOURER	DHAWDE YESHWANT BABU	D	09.12.1987	
86	LABOURER	SALUNKE JITENDRA MOTIRAM	D	01.12.1987	
87	LABOURER	SURVE MOHAN ANANT	D	01.12.1987	
88	LABOURER	TALEKAR DATTARAM DHONDU	D	04.01.1990	
89	LABOURER	BANDRE VASANT DAULAT	D	04.01.1990	
90	LABOURER	JADHAV BABAN SAMBHAJI	D	01.09.1990	
91	LABOURER	JADHAV DHANPAL PANDU	D	01.11.1990	
92	LABOURER	KANDALI SAYABU YALLAPPA	D	15.11.1990	
93	LABOURER	KHARAT UTTAM KASHINATH	D	27.12.1990	
94	LABOURER	KURME VIJAY SHANKAR	D	02.07.1991	
95	LABOURER	KANGANE DHONDU PANDURANG	D	08.10.1991	
96	LABOURER	GHAG SANJAY VASUDEV	D	08.10.1991	
97	LABOURER	SAYYAD ISAQ MAHAMAD	D	21.11.1991	
98	LABOURER	JADHAV PRAKASH GANGARAM	D	17.01.1992	
99	LABOURER	TALEKAR SAKHARAM SOMA	D	09.11.1991	
100	LABOURER	KHADYE RAVINDRA SOMA	D	09.11.1991	
101	LABOURER	NAIK LOKESH HUCHAPPA	D	11.11.1991	
102	LABOURER	SHIVGAN MANOHAR RUPA	D	09.11.1991	
103	LABOURER	KHARADE HARISHCHANDRA L	D	09.11.1991	
104	LABOURER	JAGRIA VIJAYKUMAR V	D	01.11.1991	
105	LABOURER	TALEKAR RAMCHANDRA S	D	09.11.1991	
106	LABOURER	MULE SURYAKANT SADASHIV	D	09.11.1991	
107	LABOURER	PHATAK BAJIRAO APPA	D	09.11.1991	
108	LABOURER	HIRE BALASAHEB KHANDU	D	09.11.1991	
109	LABOURER	PERIYASWAMI K DEVENDRA	D	09.11.1991	
110	LABOURER	PARVADI NARENDRA GOVIND	D	09.11.1991	
111	LABOURER	KALKAR DATTARAM SOMA	D	09.11.1991	
112	LABOURER	SHIRKE DILEEP RAJARAM	D	09.11.1991	
113	LABOURER	YARGUDE RAJAN ANNAPPA	D	09.11.1991	
114	LABOURER	KUNCHIKAR MOHAN RAMU	D	09.11.1991	
115	LABOURER	SIPRE MUKESH IRAPPA	D	11.11.1991	
116	LABOURER	DALVI SHASHIKANT SADANAND	D	18.11.1992	
117	LABOURER	MALAP SURESH TUKARAM	D	17.12.1992	
118	LABOURER	PATIL RAJIV DNYANDEO	D	17.12.1992	
119	LABOURER	PERIASWAMI AARIYAPPAN	D	11.01.1993	
120	LABOURER	GAIKWAD HARISCHANDRA N	D	21.01.1993	
121	LABOURER	KAMBLE SHARAD TUKARAM	D	21.01.1993	
122	LABOURER	THOMBARE PRADIP DEVAJI	D	23.02.1993	
123	LABOURER	CHALKE RAMESH GAURU	D	25.10.1993	
124	LABOURER	KAMBLE SANJAY BABOO	D	02.12.1993	
125	LABOURER	KAMBLE CHANDRAKANT PUNAJI	D	11.01.1994	
126	LABOURER	TALEKAR MANOHAR TUKARAM	D	01.11.1994	
127	LABOURER	RANE ATMARAM MADHUKAR	D	07.12.1994	
128	LABOURER	HADKAR KESHAV MOTIRAM	D	01.05.1995	
129	LABOURER	GURAV ASHOK SHANKAR	D	01.04.1995	
130	LABOURER	WAGHAMARE TARACHAND P	D	01.04.1995	
131	LABOURER	KAMBLE YASHAWANT R	D	01.08.1995	
132	LABOURER	DANGE SUNIL DATTARAM	D	01.09.1995	

133	LABOURER	DHADVE NARAYAN BAPU	D	01.11.1995
134	LABOURER	GAJGHAT RAJU RAKHMAJI	D	01.06.1994
135	LABOURER	TALEKAR SHANTARAM P	D	01.06.1994
136	LABOURER	KAMBLE DHARMENDRA SHIVRAM	D	01.06.1994
137	LABOURER	KAMBLE VILAS PARSHURAM	D	01.06.1994
138	LABOURER	SAGVEKAR ANIL SAKHARAM	D	01.06.1994
139	LABOURER	MANE SUHAS BHASKAR	D	01.06.1994
140	LABOURER	PARAB DILIP PUNDALIK	D	01.06.1994
141	LABOURER	SABBAN DIPAK GANPAT	D	01.06.1995
142	LABOURER	NAIK PRAKASH GANESH	D	01.06.1994
143	LABOURER	JADHAV SUNIL GANPAT	D	01.06.1994
144	LABOURER	KALKAR PRAKASH GANPAT	D	01.06.1994
145	LABOURER	WAGHELA RAJU FAKIR	D	26.04.2000
146	LABOURER	RONGTE TUKARAM WALU	D	14.06.2005
147	LABOURER	KHETADE BALU LAHANU	D	14.06.2005
148	LABOURER	PARDHI SAHEBRAO RAMA	D	14.06.2005
149	LABOURER	SHISHUPAL SUDHAKAR W	D	01.04.2005
150	LABOURER	PAWASKAR SANTOSH M	D	01.04.2005
151	LABOURER	UPADHYE SHARAD LALA	D	01.04.2005
152	LABOURER	SABALE NIVRUTTI T	D	01.04.2005
153	LABOURER	JADHAV TUSHAR BABAN	D	29.04.2006
154	LABOURER	GONDAL PARADEEP TULAJI	D	27.04.2006
155	LABOURER	SABALE AJAY VASANT	D	28.04.2006
156	LABOURER	M VEERAN	D	27.04.2006
157	LABOURER	PATSUPE BABAN SADASHIV	D	27.04.2006
158	LABOURER	SONAWANE LAXMAN KACHARU	D	27.04.2006
159	LABOURER	KARANDE KIRHOR DHANAJI	D	29.04.2006
160	LABOURER	KAMBLE DILIP SADASHIV	D	29.04.2006
161	LABOURER	WADIKAR RUPESH RAGHUNATH	D	12.05.2006
162	LABOURER	TAMBE RAKESH GANGARAM	D	12.05.2006
163	LABOURER	SHIRSAT RAHUL CHANDRAKANT	D	28.04.2006
164	LABOURER	BHISE SACHIN SHAYAMRAO	D	28.04.2006
165	LABOURER	KADAM SANDIP PRAKASH	D	09.05.2007
166	LABOURER	NAIDU RAJENDRAN V	D	24.08.2007
167	LABOURER	GAIKWAD JAGNATH S	D	10.06.2008
168	LABOURER	AAREKAR PRAVIN RAMESH	D	02.06.2008
169	LABOURER	RATHOD RAMESHWAR T	D	02.06.2008
170	LABOURER	DABHADE KISAN NAMDEO	D	24.06.2008
171	LABOURER	BARMADE VITTHAL DHONDU	D	24.06.2008
172	LABOURER	MISHRA YOGENDRA BRAMHADEV	D	22.07.2008
173	LABOURER	BHAPKAR SANJAY VITTHAL	D	23.07.2008
174	LABOURER	BHOIR BHARAT MAHADU	D	16.07.2008
175	LABOURER	TAMBEKAR KUNDLIK Y	D	12.07.2008
176	LABOURER	ADHAV SURYAKANT DYANDEV	D	22.07.2008
177	LABOURER	CHAUDHARI PARSHURAM AMRUT	D	23.07.2008
178	LABOURER	SURVE PRAMOD BALIRAM	D	01.11.2008
179	LABOURER	JADHAV DEEPAK UTTAM	D	01.11.2008
180	LABOURER	FARERA SANJAY ANTHONY	D	01.11.2008
181	LABOURER	MANE GANESH SHANTARAM	D	13.03.2009
182	LABOURER	KASKAR SAINATH KASHINATH	D	01.12.2009
183	LABOURER	BHOIR VITTHAL VASANT	D	27.09.2011
184	LABOURER	PAWAR SHASHIKANT R	D	27.09.2011
185	LABOURER	KADER LAXMAN BABANNA	D	29.09.2011
186	LABOURER	SATPUTE SUNIL SHIVAJI	D	04.10.2011
187	LABOURER	LOHAR GANESH SHIVRAM	D	18.10.2011
188	LABOURER	NAIK NILESH JAGANNATH	D	21.10.2011
189	LABOURER	BHAGLI AJAY RAGHUNATH	D	18.10.2011
190	LABOURER	VISHE RAJENDRA LAXMAN	D	18.10.2011
191	LABOURER	NIRPUTE MANOHAR PADU	D	18.10.2011
192	LABOURER	SOMVATE RAJESH ANANTA	D	18.10.2011
193	LABOURER	RASKAR DATTARAY MUGUTRAO	D	18.10.2011
194	LABOURER	GHADGE DEVRAJ MAHADEV	D	27.09.2011
195	LABOURER	BODKE DILIP SADASHIV	D	04.10.2011
196	LABOURER	PANSARE ANKUSH LAXMAN	D	18.11.2011
197	LABOURER	RANE SACHIN KRISHNAJI	D	30.11.2011
198	LABOURER	JADHAV RAJKUMAR S	D	17.11.2011
199	LABOURER	SHINDE DILIP SURESHRAO	D	19.11.2011
200	LABOURER	PATIL JAYPRAKASH P	D	15.11.2011
201	LABOURER	FAIMODIN ALIMODIN	D	12.11.2011
202	LABOURER	MAHADIK SHEKHAR DATTARAM	D	01.12.2011
203	LABOURER	RATHOD SANDIP BABURAO	D	09.11.2011
204	LABOURER	AHER SHANKAR JAGANNATH	D	13.12.2011
205	LABOURER	NAIK VIJAY ARUN	D	03.01.2012
206	LABOURER	DOLAS HARICHANDRA LAHU	D	22.11.2012
207	LABOURER	PAWAR INDAL AMARSINGH	D	15.11.2011

208	LABOURER	TARE VINOD GANPAT	D	30.12.2011
209	LABOURER	WAGHMARE GANPAT TUKARAM	D	10.01.2012
210	LABOURER	TAKLE DAJI DADARAO	D	14.03.2012
211	LABOURER	DUBAYWAD GAJANAN MAROTRAO	D	24.07.2012
212	LABOURER	NAVARE SHARAD BHIVA	D	28.02.2013
213	LABOURER	SHRINGARPURE AJAY MARTAND	D	01.11.1990
214	LABOURER	KAMBLE ASHOK GOVIND	D	13.01.1982
215	LABOURER	SAKPAL MAHENDRA MURARI	D	16.12.1987
216	LABOURER	SAKTHIVEL MALLAN	D	01.06.1994
217	LABOURER	RANE RAJENDRA GANPAT	D	09.11.1991
218	MISTRY I	PATIL RAVINDRA SITARAM	D	23.05.1981
219	MISTRY I	LAD SUBHASH DOULAT	D	23.05.1981
220	PAINTER II	MAJALKAR SANTOSH DHONDU	D	01.06.1994
221	PAINTER II	JADHAV PRAKASH SHRIPAT	D	01.06.1994
222	PLUMBER II	GAWADE UTTAM MAHADEV	D	05.08.1987
223	PLUMBER II	SURVE VIJAY RAGHUNATH	D	01.06.1994
224	MASON II	WADAYE VITHAL BUDHAJI	D	07.04.1983
225	MISTRY II	JADHAV KIRAN T	D	23.05.1981
226	LABOURER	JADHAV PANDURANG J	D	05.04.1988
227	LABOURER	NARSALE KESHAV RUMA	D	23.05.1981
228	LABOURER	PASTE BALIRAM S	D	23.05.1981
229	LABOURER	SUWARE YESHWANT G	D	23.05.1981
230	LABOURER	TALEKAR ATAMARAM G	D	23.05.1981
231	LABOURER	PERUSWAMI SELPAN	D	21.08.1985
232	LABOURER	SHELAR ANANT MANSING	D	01.07.1986
233	LABOURER	WAGHRI RAJU SHANKAR	D	02.06.1988
234	LABOURER	INGAWALE RAVINDRA RAMJI	D	13.09.1989
235	LABOURER	KAMBLE VISHWAS HIROO	D	01.06.1994
236	LABOURER	PARVATE GANGARAM DNYANU	D	01.06.1994
237	LABOURER	SAWANT PRAKASH GANGARAM	D	01.06.1994
238	LABOURER	MAHADE UDAY BABYA	D	01.06.1994
239	LABOURER	CHAUGULE DATTARAM K	D	01.06.1994
240	LABOURER	TAWADE PRABHAKAR R	D	01.06.1994
241	LABOURER	SALUNKHE GORAKHNATH A	D	02.06.2008
242	LABOURER	KANOJA SHARAD LAXMAN	D	27.06.2008
243	LABOURER	PATIL SHAHAJI GANPATI	D	22.07.2008
244	LABOURER	PATIL PANKAJ KESHAV	D	23.07.2008
245	LABOURER	JADHAV LALCHAND DEVRAM	D	05.08.2008
246	LABOURER	GODE ARUN VASUDEV	D	23.07.2008
247	LABOURER	CHANDORKAR NITIN MARUTI	D	07.10.2008
248	LABOURER	MORE KAILAS MANOHAR	D	16.10.2008
249	LABOURER	NAIR ABHILASH ARJUN	D	01.11.2008
250	LABOURER	GAWADE RUPESH BALKRISHNA	D	17.11.2008
251	LABOURER	PATIL MANOJ RAMESH	D	12.08.2010
252	LABOURER	SAWANT SACHIN LAXMAN	D	15.09.2011
253	LABOURER	AMBRE SACHIN TUKARAM	D	15.09.2011
254	LABOURER	PATIL YUVRAJ SITARAM	D	28.09.2011
255	LABOURER	AEER SANDEEP SHANKAR	D	28.09.2011
256	LABOURER	SOLANKI BHARAT TULSI	D	22.09.2011
257	LABOURER	CHAUDHARI DAJI JANAYA	D	21.10.2011
258	LABOURER	TANDEL SANJAY PARSHURAM	D	17.11.2011
259	LABOURER	BUCHADE SANDEEP BABURAO	D	02.12.2011
260	LABOURER	TOHAKE ANANT HARI	D	30.12.2011
261	LABOURER	CHAVAN RUSHIRAJ ANAND	D	10.01.2012
262	LABOURER	JADHAV VINOD KASHIRAM	D	24.01.2012
263	LABOURER	SHIVGAN HARSHNATH G	D	07.09.2012
264	ELECTRICIAN II	PARAB NARESH VASANT	D	12.04.1982
265	WIREMAN I	SHITKAR SHARAD ANANT	D	24.07.1984
266	PLUMBER II	TALEKAR SITARAM SOMA	D	01.04.1983
267	PLUMBER II	KAVADE KISAN RAGHOO	D	11.01.1994
268	PLUMBER II	KAMBLE BHAGOJI SHRIPATI	D	01.06.1994
269	MASON II	NAKADE ASHOK LAXMAN	D	16.09.1980
270	MASON II	KAMBLE AVINASH SAKHARAM	D	01.06.1994
271	MUKADAM	GAIKWAD DATTARAM MARUTI	D	01.10.1981
272	WIREMAN III	CHAVAN KRISHNA SHIVAJI	D	15.03.1985
273	WIREMAN III	PAWAR ARUN SHIVAJI	D	25.11.1998
274	LABOURER	MEHATAR ANIL BALKRISHNA	D	23.05.1981
275	LABOURER	GURAO PRABHAKAR GUNAJI	D	23.05.1981
276	LABOURER	KADAM SURESH DINKAR	D	23.05.1981
277	LABOURER	PATIL EKNATH ATMARAM	D	23.05.1981
278	LABOURER	RAMANE SHANTARAM SOMA	D	07.01.1982
279	LABOURER	MORE SHRIDHAR JAIRAM	D	19.03.1991
280	LABOURER	KASAB SAMUEL PRABHAKAR	D	13.08.1985
281	LABOURER	WAGHARI RAJU SAKHARA	D	16.02.1987
282	LABOURER	KANGANE MAHADEV LAXMAN	D	01.12.1987

283	LABOURER	JAYAWANT NIRANJAN M	D	10.12.1987
284	LABOURER	SABALE ARVIND KRISHNAJI	D	05.12.1987
285	LABOURER	PANCHAL DHONDU VITHOBA	D	01.12.1987
286	LABOURER	PATEL BHAGWAN MOHAN	D	08.03.1989
287	LABOURER	SAWANT MANGESH NARAYAN	D	23.06.1988
288	LABOURER	VAIDYA SHYAM EKNATH	D	08.02.1990
289	LABOURER	MANDAVKAR R L	D	12.01.1994
290	LABOURER	YADAV SHRIRANG DINKAR	D	20.04.1985
291	LABOURER	BORKAR VIJAY NATHURAM	D	25.03.1994
292	LABOURER	WARADKAR PRASAD MURLIDHAR	D	11.05.1994
293	LABOURER	WAVEKAR BALRAJ NAMDEO	D	11.05.1994
294	LABOURER	JAGARIYA KISHORKUMAR J	D	02.05.1995
301	LABOURER	MURCHITAL YESUDAS BABU	D	01.06.1994
302	LABOURER	KAMBLE DEEPAK KASHIRAM	D	01.06.1994
303	LABOURER	DHURE UDAY NAMDEO	D	01.06.1994
304	LABOURER	JANVALKAR DEEPAK VITTHAL	D	01.06.1994
305	LABOURER	KANADE BHANU TUKARAM	D	01.06.1994
306	LABOURER	BHOSALE UMESH ANANT	D	05.02.1995
307	LABOURER	MANE SANTOSH SHAMRAO	D	01.03.1999
308	LABOURER	KORADE NATHU LAXMAN	D	14.05.2005
309	LABOURER	GHARE DNYANESHWAR GANPAT	D	14.06.2005
310	LABOURER	RANE PANDURANG KRISHNAJI	D	01.04.2005
311	LABOURER	PAWAR SANTOSH TUKARAM	D	01.04.2005
312	LABOURER	PALKAR SWAPNIL K	D	01.04.2005
313	LABOURER	KALE SURESH DHULAJI	D	01.04.2005
314	LABOURER	ROKADE SHASHIKANT Y	D	27.04.2006
315	LABOURER	SARWADE RAHUL JANU	D	27.04.2006
316	LABOURER	BHOSALE MANOJ SHIVAJI	D	29.04.2006
317	LABOURER	KAMBLE RAHUL KESHAV	D	29.04.2006
318	LABOURER	BEJADI JALANDAR SAYANNA	D	29.04.2006
319	LABOURER	JADHAV NITIN RAMCHANDRA	D	04.05.2006
320	LABOURER	BHAMARE ANAND JAYSING	D	10.06.2006
321	LABOURER	BHOSALE MANGESH NARAYAN	D	28.06.2006
322	LABOURER	HELIYA RAJESH MULJI	D	21.07.2006
323	LABOURER	JADHAV ARVIND BENDURAM	D	22.07.2006
324	LABOURER	LOKHANDE SANTOSH UTTAM	D	07.06.2006
325	LABOURER	SALVE BALA BHASKAR	D	28.07.2007
326	LABOURER	JADHAV SANJAY BANDU	D	23.08.2007
327	LABOURER	PADELKAR JAGESH MALOJI	D	21.09.2007
328	LABOURER	MALADKAR RAHUL VASANT	D	07.09.2007
329	LABOURER	MHATRE SMIT HARISHCHANDRA	D	03.06.2008
330	LABOURER	MHASKULE VINAYAK DNYANDEV	D	04.06.2008
331	LABOURER	DAINGADE SANJAY SOPAN	D	02.06.2008
332	LABOURER	SANAP ASHOK KARBHARI	D	02.06.2008
333	LABOURER	MASAL SHIVAJI DINKAR	D	02.06.2008
334	LABOURER	POTKULE GANESH NIVRUTTI	D	05.07.2008
335	LABOURER	JAKHERE JAYDARTH R.	D	09.07.2008
336	LABOURER	PASHTE RAVINDRA MARUTI	D	16.07.2008
337	LABOURER	CHAVAN NANDKUMAR GANESH	D	22.07.2008
338	LABOURER	GAVKAR PRAMOD PARSHURAM	D	22.07.2008
339	LABOURER	WASKAR PRAKASH RAMCHANDRA	D	22.07.2008
340	LABOURER	KADAM SHASHANK ANKUSH	D	01.11.2008
341	LABOURER	BOBHATE GAJANAN DATTRAM	D	20.11.2009
342	LABOURER	PATIL DEVENDRA KAMALAKAR	D	23.11.2009
343	LABOURER	MHATRE MANGESH H	D	14.12.2009
344	LABOURER	BHOSALE TANAJI DHARMAJI	D	15.10.2011
345	LABOURER	BHOIR MANGALDAS BABURAO	D	03.11.2011
346	LABOURER	GHARAT SANTOSH RAMU	D	17.10.2011
347	LABOURER	CHILE SANTOSH MADHUKAR	D	19.11.2011
348	LABOURER	KUTE SACHIN SADASHIV	D	12.11.2011
349	LABOURER	KADAM UDAY SAKHARAM	D	19.11.2011
350	LABOURER	RAORANE MANGESH SHANTARAM	D	12.11.2011
351	LABOURER	KAMBLE MILIND GAGARAM	D	15.12.2011
352	LABOURER	AVHAD VITHOBA MADHUKAR	D	16.11.2011
353	LABOURER	JOSHI RAKESH MADUKAR	D	09.01.2012
354	LABOURER	HULE SANTOSH GURUNATH	D	27.01.2012
355	ELECTRICIAN I	DANDEVATE SAMBHAJI SHIDU	D	11.12.1985
356	ELECTRICIAN I	SAKAT RAJENDRA PANDURANG	D	04.05.1993
357	PUMP OPERATOR	PADAWE SHASHIKANT BHIWAJI	D	01.01.1988
358	CARPENTER I	CHINCHWALKAR ATAMARAM GANU	D	23.05.1981
359	WIREMAN II	RAUT DILIP SHANKAR	D	18.10.1984
360	LIFTMAN	TAKKE VIJAY DHONDU	D	20.04.1985
361	LIME WASHER	GOVALKAR PRABHAKAR S	D	12.11.1984
362	LIME WASHER	SALUNKHE PRAKASH SITARAM	D	01.06.1994

363	PLUMBER II	JADHAV MANGESH LAXMAN	D	01.06.1994
364	MASON II	KANGANE DATTARAM LAXMAN	D	23.05.1981
365	CARPENTER II	MESTRY SURYAKANT LAXMAN	D	23.05.1981
366	MASON III	TUPE MOHAN SUBRAO	D	01.11.1993
367	LABOURER	DHAWADE GANESH TUKARAM	D	01.12.1987
368	LABOURER	SHAIKH NAZIR AHMED	D	11.01.1990
369	LABOURER	GAIKAR MANOHAR SAMBHAJI	D	18.03.1994
370	LABOURER	KINI AJAY VITHAL	D	01.06.1994
371	LABOURER	KAMBLE RAMAKANT NARAYAN	D	01.06.1994
372	LABOURER	TALEKAR PRAKASH DHAKTU	D	01.06.1994
373	LABOURER	MAIL SURESH BUDHAJI	D	01.06.1994
374	LABOURER	SHANKAR ASHAPPA	D	01.06.1994
375	LABOURER	MORE PRAKASH LAXMAN	D	01.06.1994
376	LABOURER	PATIL NANDKUMAR SITARAM	D	01.06.1994
377	LABOURER	SAWANT SADASHIV GOVIND	D	01.06.1994
378	LABOURER	BHOIR RAJAN BHASKAR	D	01.04.2005
379	LABOURER	MANE RAMESH TANAJI	D	09.05.2006
380	LABOURER	JITIYA JAGDISH K	D	03.09.2007
381	LABOURER	JADHAV BHAGAJI DEVRAM	D	24.06.2008
382	LABOURER	ROKADE ASHOK ANANDA	D	29.07.2008
383	LABOURER	KADAM RAVINDRA RAMCHANDRA	D	03.02.2010
384	LABOURER	BANDE BALU SITARAM	D	14.10.2011
385	LABOURER	GHADAGE SANTOSH RAMESH	D	03.11.2011
386	LABOURER	PATIL MILIND NASHIK	D	17.10.2011
387	LABOURER	AVHAD TRAMBAK PANDU	D	17.10.2011
388	LABOURER	WAGHARI KIRAN RAMESH	D	25.11.2011
389	LABOURER	SARUKTE MADHUKAR NAMDEO	D	12.11.2011
390	LABOURER	PINGALE NAMDEV PANDURANG	D	12.11.2011
391	LABOURER	MANE RAJENDRA YALLAPA	D	16.11.2011
392	LABOURER	DHUMAL PANDIT MARUTI	D	12.11.2011
393	LABOURER	GAWAD AVINASH JAGANNATH	D	21.01.2012
394	LABOURER	CHINCHWALKAR PRAKASH S	D	12.05.2012
395	MUKADAM	CHAVDA AALJI MEGHJI	D	10.07.1981
396	MUKADAM	CHAVRIYA KISAN RAMCHANDRA	D	12.04.1988
397	SWEEPER	BHADRAKA DHANUBAI KHIMJI	D	01.10.1982
398	SWEEPER	KOLI GANGABAI VINOD	D	06.07.1976
399	SWEEPER	JADHAV DAYAL MITHA	D	04.11.1977
400	SWEEPER	WAGH TEJU WALJI	D	08.04.1978
401	SWEEPER	SOLANKI RAMESH DANJI	D	09.07.1981
402	SWEEPER	SALVE SAVLARAM LAHOOJI	D	09.07.1981
403	SWEEPER	PAWAR MAHADEV YELOO	D	01.08.1981
404	SWEEPER	JADHAV SULOCHANA LAXMAN	D	05.02.1985
405	SWEEPER	SAKPAL BABAN BHIKAJI	D	16.12.1985
406	SWEEPER	BAGDI VIJENDRA BIRAMSINGH	D	01.09.1988
407	SWEEPER	SAWANT INDUMATI BHAGURAM	D	08.10.1984
408	SWEEPER	JADHAV ANIL ARJUN	D	30.07.1991
409	SWEEPER	KOLI NARAN MAVJI	D	01.09.1993
410	SWEEPER	DHUMAK DHONDU SAVA	D	01.09.1993
411	SWEEPER	MARU ARJUN DANJI	D	01.09.1993
412	SWEEPER	KATPARA DEVJI AALJI	D	01.09.1993
413	SWEEPER	PAWAR RAVINDRA SAMBHAJI	D	01.09.1993
414	SWEEPER	BAGDI MANOJ BIRAMSINGH	D	01.09.1993
415	SWEEPER	KADAM PRAKASH GOPAL	D	01.09.1993
416	SWEEPER	PATOLE SANJIV VITTHAL	D	01.09.1993
417	SWEEPER	SHIRWALE RAMESH BHANUDAS	D	01.09.1995
418	SWEEPER	PAWAR ARUN HARI	D	01.09.1995
419	SWEEPER	PAWAR VIJAY PANDURANG	D	01.09.1995
420	SWEEPER	MOHITE PRASHANT SHRIPAT	D	07.01.2005
421	SWEEPER	JADHAV SUGANDHA GANGARAM	D	07.01.2005
422	SWEEPER	JADHAV JASUBAI LAXMAN	D	07.01.2005
423	SWEEPER	LOHERA RAJENDRA DULICHAND	D	07.01.2005
424	SWEEPER	SHINDE VATSALA DHONDIBA	D	07.01.2005
425	SWEEPER	PAGADE ANIL SAKHARAM	D	07.01.2005
426	SWEEPER	KAMBLE HIRA BANDU	D	07.01.2005
427	SWEEPER	SINGLE SURESH DEVJI	D	07.01.2005
428	SWEEPER	KAMBLE MADHURI MAHENDRA	D	07.01.2005
429	SWEEPER	RATHOD NARESH KHIMJI	D	05.05.2006
430	SWEEPER	KAMBLE PRAMOD SAKHARAM	D	18.09.2006
431	SWEEPER	PAWAR SANDEEP BALU	D	01.05.2007
432	SWEEPER	KADAM RAKESH BANSI	D	18.03.2008
433	SWEEPER	GOHIL KANCHAN RANA	D	18.03.2008
434	SWEEPER	SAWANT SANKETA DEEPAK	D	04.06.2009
435	SWEEPER	MARU KANTI BIJAL	D	04.06.2009
436	SWEEPER	JADHAV AVINASH ARJUN	D	16.06.2009
437	SWEEPER	BAHOT RAVI RAJU	D	18.06.2009

438	SWEEPER	GHAG BHAVESH SUDHAKAR	D	04.06.2009	
439	SWEEPER	PAWAR RUPESH GANGADHAR	D	04.06.2009	
440	SWEEPER	SOLANKI VILASCHANDRA N.	D	23.07.2009	
441	SWEEPER	TAK RAVI RAJESH	D	19.10.2010	
442	SWEEPER	GHARNIYA MANOJ NARAYAN	D	17.08.2010	
443	SWEEPER	PURANI VIJAY SURESH	D	08.06.2011	
444	SWEEPER	PAWAR SUNIL SONU	D	18.06.2011	
445	SWEEPER	SOLANKI BHARAT RAMAN	D	20.10.2012	
446	SWEEPER	JADHAV JAYWANT HARI	D	28.11.2012	
447	SWEEPER	SOLANKI KAMLESH ASHOK	D	06.12.2012	
448	SWEEPER	JADHAV DHRUVBAL BHIKAJI	D	01.02.2013	
449	SWEEPER	MAKWANA PURIBEN MOHAN	D	07.01.2005	
450	SWEEPER	DULGAJ VIRSINGH VIJAYSINGH	D	05.12.2009	
451	MUKADAM	KAMBLE ASHOK DHANJI	D	12.06.1987	
452	SWEEPER	MANGA GORA MARU	D	12.04.1988	
453	SWEEPER	CHAVRIYA RANDHIR THAVRIYA	D	01.09.1988	
454	SWEEPER	BAGUL VINAYK PUNJA	D	17.03.1992	
455	SWEEPER	DHUTRE ASHOK PANDURANG	D	01.09.1993	
456	SWEEPER	JADHAV ASHOK NARAYAN	D	01.10.1993	
457	SWEEPER	PAWAR RAJESH AMICHAND	D	01.09.1993	
458	SWEEPER	MURDAVKAR CHANDRAKANT K.	D	01.09.1993	
459	SWEEPER	ANJARA MAHESH GOVIND	D	01.09.1993	
460	SWEEPER	KAMBLE SANDEEP SONYA	D	07.01.2005	
461	SWEEPER	JADHAV VIDYA GUNAJI	D	05.05.2006	
462	SWEEPER	KAMBLE ARUN LAXMAN	D	18.09.2006	
463	SWEEPER	SHINGAVLE BHARTI VIJAY	D	01.05.2007	
464	SWEEPER	KAMBLE SANJAY SAKHARAM	D	05.06.2009	
465	SWEEPER	WAGHELA GIRISH PRAKASH	D	17.12.2009	
466	SWEEPER	MAKWANA NITIN AALJI	D	16.12.2010	
467	SWEEPER	THAKUR VAISHALI NARESH	D	09.10.2012	
468	SWEEPER	GOHIL VINOD MANGAL	D	01.10.2012	
469	SWEEPER	SAWANT DEEPAK BALKRISHNA	D	30.07.1991	
470	SWEEPER	NAGLE RAMESH BHIKAJI	D	09.01.1992	
471	SWEEPER	KUMBHAR PRAKASH BAPU	D	04.06.1992	
472	SWEEPER	ADIWAREKAR ASHOK GOKUL	D	01.09.1993	
473	SWEEPER	SOLANKI VASANTI NARESH	D	01.10.1982	
474	SWEEPER	VALODARA SUMAN PRAKASH	D	07.01.2005	
475	SWEEPER	SOLANKI SANJAY P.	D	24.09.2009	
476	MUKADAM	ZALA PALJI PUNJA	D	01.10.1985	
477	SWEEPER	SOLANKI PITAMBAR DANJI	D	09.07.1981	
478	SWEEPER	KAGDA KISAN MOTIRAM	D	01.09.1993	
479	SWEEPER	MAWANA MUKESH AMBALAL	D	01.09.1993	
480	SWEEPER	TANK BEENA HARIKISAN	D	07.01.2005	
481	SWEEPER	KAMBLE SANTOSH GUNAJI	D	07.01.2005	
482	SWEEPER	MAKWANA PREMJI MANGAL	D	05.05.2006	
483	SWEEPER	DAYMA NARESH ASHOK	D	05.05.2006	
484	SWEEPER	NAGLE PRAKASH BHIKAJI	D	18.09.2006	
485	SWEEPER	JADHAV ASHWINI ASHOK	D	01.05.2007	
486	SWEEPER	SINGAL DINESH ARUN	D	04.06.2009	
487	SWEEPER	TUPARE VIKAS LAXMAN	D	05.10.2010	
488	SWEEPER	MAKWANA BHARAT MADHAVJI	D	06.07.2011	
489	SWEEPER	JADHAV MANOJ RAJARAM	D	12.01.2013	
490	SWEEPER	GOHIL MAVJI HIRA	D	18.09.2006	
491	SWEEPER	BORICHA BIPIN ARVIND	D	07.01.2010	
492	SWEEPER	AUSARMAL JAGNNATH R.	D	07.01.2005	
493	ELECTRICIAN 2	KUMBHAR BALU BABU	D	01.07.1981	
494	HALALKHOR	CHAVAN BABU DEVJI	D	01.08.1978	
495	LABOUR	SAKAT DAGDU RAGHUNATH	D	15.02.1992	
496	LABOUR	PATIL NIMISH MEGHNATH	D	23.06.2009	
497	STAGE ATTENDENT	SHAIKH MAJIDULLA ISMAIL	D	01.12.1978	
498	STAGE ATTENDENT	JADHAV PRAKASH BHIKYA	D	09.06.1998	
499	MASON-II	GUDISE HANUMANTRAO N	D	08.10.1991	
500	MISTRY-II	MARE MANOAR SIDHU	D	07.10.1992	
501	DIVER	SALVI GOVIND VITTHAL	D	07.09.1981	
502	MUKADAM	BALLAPA HANUMANIIA	D	03.06.1988	
503	MUKADAM	GAWADE DATTARAM BHIWA	D	07.10.1992	
504	MUKADAM	GOTAD MOHAN LAXMAN	D	07.10.1992	
505	MUKADAM	JADHAV NARANDRE ABAJI	D	01.12.1987	
506	MUKADAM	JADHAV RAVINDRA YESHWANT	D	03.12.1987	
507	MUKADAM	JADHAV KISHOR VITHOO	D	12.04.1990	

508	MUKADAM	JADHAV PRAMOD PANDURANG	D	13.12.1990
509	MUKADAM	KAMBLE YASHWANT VITHAL	D	20.11.1979
510	MUKADAM	KAMBLE DATTARAM SHIVRAM	D	16.08.1985
511	MUKADAM	SALISTEKAR PRAVIN NARAYAN	D	08.09.1990
512	MUKADAM	KAMBLE HARI DAMAJI	D	03.05.1979
513	MUKADAM	KANGANE SHANTARAM BUDHAJI	D	01.12.1987
514	MUKADAM	KOTHAMIRE SURESH MAHADEO	D	11.02.1994
515	MUKADAM	MATVANKAR DILIP SHRIDHAR	D	12.10.1992
516	MUKADAM	PADELKAR VIJAY ANANT	D	24.07.1985
517	MUKADAM	PADELKAR PRADEEP TUKARAM	D	08.08.1992
518	MUKADAM	PEDNEKAR ARVIND DAMODHAR	D	13.10.1992
519	MUKADAM	KAMBLE RAJARAM DHONDU	D	04.04.1974
520	MUKADAM	SAWANT PRAKASH BABU	D	12.08.1987
521	PLUNGERMAN	JADHAV BHIMSEN MAHADEO	D	01.02.1979
522	PLUNGERMAN	DEVENDRA SHAMUGAM R.	D	12.04.1990
523	PLUNGERMAN	FADALE DNYANESHWAR DHONDU	D	17.01.1994
524	PLUNGERMAN	JADHAV ASHOK KERU	D	23.04.1985
525	PLUNGERMAN	JADHAV VIJAY NARAYAN	D	20.04.1973
526	PLUNGERMAN	KAMBLE ANANT RATNU	D	04.04.1974
527	PLUNGERMAN	SALUNKE MOHAN TUKARAM	D	18.04.1979
528	PLUNGERMAN	SHEVADE RAMESH DHONDIRAM	D	01.06.1994
529	PLUNGERMAN	TIRLOTKAR VIJAY BHIKAJI	D	28.01.1994
530	PLUNGERMAN	VALAPKAR ANKUSH SASHARAM	D	19.01.1994
531	PLUNGERMAN	PATIL JYOTIRAM MAHADEO	D	01.07.1995
532	PLUNGERMAN	SAKPAL SIDDHARTH GUNAJI	D	01.06.1994
533	LABOURER	BANKAR PRABHAKAR GAJANAN	D	01.08.1995
534	LABOURER	BETKAR SURESH LAXMAN	D	23.04.1985
535	LABOURER	BHARTI SURESH MAHADEV	D	17.10.1992
536	LABOURER	CHOWKEKAR SHANTARAM S.	D	17.10.1992
537	LABOURER	GAJAMAL VILAS RAGHUNATH	D	19.01.1994
538	LABOURER	GHAG BABURAO RAMCHANDRA	D	24.01.1994
539	LABOURER	GOSAVI SUNIL RAMCHANDRA	D	07.01.1995
540	LABOURER	JADHAV ANIL CHANDAR	D	01.07.1995
541	LABOURER	KADAM MAHJENDRA SAKHARAM	D	19.03.1991
542	LABOURER	KAMBLE PRAKASH VITHAL	D	21.01.1994
543	LABOURER	KANGNE VIJAY GANU	D	30.11.1990
544	LABOURER	KHARAT RAVINDRA RAMCHANDAR	D	15.10.1992
545	LABOURER	KUNCHIKURVE NARSAPPA N.	D	17.07.1985
546	LABOURER	RAHATEKAR PRASHANT VASANT	D	01.01.1996
547	LABOURER	MHAVLANGERKAR SANJAY S.	D	12.04.1990
548	LABOURER	MOHITE CHANDRAKANT RAMA	D	03.05.1979
549	LABOURER	MORE NARENDRA RAGHUNATH	D	28.01.1994
550	LABOURER	PAGARE NILKANTH VISHNU	D	09.02.1991
551	LABOURER	PATIL ANIL SHANKAR	D	01.12.1987
552	LABOURER	RUKE SUNIL MAHADEO	D	01.05.1995
553	LABOURER	SALUNKE SADASHIV TUKARAM	D	03.12.1987
554	LABOURER	SAVNE MANOHAR MARUTI	D	03.05.1979
555	LABOURER	SAWANT PRAKASH TATU	D	01.12.1987
556	LABOURER	SHINDE GANESH KESHAV	D	23.03.1995
557	LABOURER	SUWARE SUNIL RAMCHANDRA	D	19.01.1994
558	LABOURER	VEER SURESH TUKARAM	D	01.07.1995
559	LABOURER	WALKAR SANJAY GOPAL	D	16.07.1990
560	LABOURER	WAPHELKAR SANDESH RAJARAM	D	19.01.1994
561	LABOURER	KYADGI YELAPPA TIPANNA	D	03.12.1979
562	LABOURER	SAWANT SURESH BABU	D	06.01.1998
563	LABOURER	KAMBLE BABURAO SHIVRAM	D	03.01.2000
564	LABOURER	BHALERAO ARUN MAHADEO	D	01.11.1999
565	LABOURER	KABADI SURESH KASHINATH	D	01.12.2004
566	LABOURER	AEER ANANDKUMAR VITHOBA	D	27.04.2006
567	LABOURER	PAWAR SANTOSH BHAGURAM	D	27.04.2006
568	LABOURER	SHINDE SACHIN RAMCHANDRA	D	27.04.2006
569	LABOURER	HEDULKAR NARESH LUMAJI	D	27.04.2006
570	LABOURER	ARWEL BABASAHEB KERU	D	27.04.2006
571	LABOURER	SHINDE SUNIL SHIVRAM	D	27.04.2006
572	LABOURER	SHINDE SANTOSH C.	D	27.04.2006
573	LABOURER	KAMBLE KAPIL MOHAN	D	27.04.2006
574	LABOURER	DEOKATE SAMBHAJI MALHARI	D	02.06.2008
575	LABOURER	PATIL VISHWAS DAGADU	D	10.06.2008
576	LABOURER	RATHOD DILIP SAWAJI	D	04.06.2008
577	LABOURER	PATIL VINESH PRABHAKAR	D	04.10.2011
578	LABOURER	KHOPADE SUNIL RAMCHANDRA	D	27.09.2011
579	LABOURER	YEDE SANJAY WAMAN	D	05.12.2011
580	LABOURER	PALVE SHIVAJI DAGADU	D	19.11.2011
581	LABOURER	KARJEKAR PRADEEP GANPAT	D	19.11.2011
582	LABOURER	CHAUDHARI RAVINDRA GOVIND	D	22.11.2011

583	LABOURER	KALKATE DILIP SUDHAKAR	D	06.12.2011	
584	LABOURER	PHADTARE PRAKASH R.	D	15.11.2011	
585	LABOURER	GOPAL SUNIL BALU	D	21.11.2011	
586	LABOURER	LONE EKNATH MARUTI	D	13.12.2011	
587	LABOURER	KHAN SAJID JAHID ALI	D	11.11.2011	
588	LABOURER	WAKULKAR RAVINDRA SHANKAR	D	12.11.2011	
589	LABOURER	PATIL CHANDRASHEKHAR P.	D	19.11.2011	
590	LABOURER	GAGE KISHOR PARSHURAM	D	09.12.2011	
591	LABOURER	PATIL SUSHIL GOPAL	D	09.12.2011	
592	LABOURER	CHAWAN PRAKASH SAWAIRAM	D	12.01.2012	
593	LABOURER	MAHATRE ASHOK DUNDYA	D	31.01.2012	
594	LABOURER	KOLWANKAR PRAKASH GIRISH	D	28.08.2012	
595	LABOURER	KEDARE AMIT SUKHADEV	D	07.09.2012	
596	LABOURER	PONNUSWAMY K. V.	D	01.06.1994	
597	LABOURER	PAWAR SHIVRAM RAMJI	D	01.06.1994	
598	LABOURER	WADKAR NARESH DEVRAMJI	D	01.06.1994	
599	LABOURER	SHIRKE ASHOK SUBHASH	D	01.06.1994	
600	LABOURER	KUNCHIKURVE NAGAPPA S.	D	17.07.1985	
601	LABOURER	DEODHAR BABU RAMAN	D	22.07.1993	
602	LABOURER	DHOTRE SHANTARAM APPAJI	D	01.06.1994	
603	LABOURER	DHUMAK SITARAM SHRIPAT	D	01.01.1993	
604	LABOURER	JADHAV MAHENDRA SAKHARAM	D	04.10.1992	
605	LABOURER	JADHAV RAMCHANDRA S.	D	06.11.1992	
606	LABOURER	JADHAV ASHOK LAXMAN	D	16.03.1995	
607	LABOURER	KAMBLE AJIT SAHDEO	D	24.11.1992	
608	LABOURER	KANGANE MANOHAR BHAGA	D	24.01.1994	
609	LABOURER	LAVANDE SITARAM NANA	D	17.01.1994	
610	LABOURER	LOKE DIGAMBAR ANKUSH	D	01.07.1994	
611	LABOURER	MALKAPPA YELLAPPA	D	09.02.1979	
612	LABOURER	MOHITE PRAMOD SHANKAR	D	24.01.1994	
613	LABOURER	MUMBARKAR MADHUKAR R.	D	08.02.1979	
614	LABOURER	NADANKAR RAHUL VISHNU	D	04.04.1974	
615	LABOURER	PANDERE VIJAY SITARAM	D	07.10.1992	
616	LABOURER	PARAB ANIL BABI	D	06.05.1995	
617	LABOURER	PATIL KAILAS JANARDAN	D	03.12.1987	
618	LABOURER	PATIL NARENDRA BHIWA	D	27.10.1993	
619	LABOURER	PENDARKAR RAJESH JAIRAM	D	08.02.1994	
620	LABOURER	SAWANT VIJAY ANANT	D	02.12.1993	
621	LABOURER	NAIDU MOSES SUNDARRAO	D	06.10.1998	
622	LABOURER	SHINDE BHASKAR BHIKU	D	01.12.1999	
623	LABOURER	PAWAR SANDESH SHANTARAM	D	03.01.2000	
624	LABOURER	PINGALE DEEPAK VASANT	D	13.07.2005	
625	LABOURER	TAMHANKAR HARESH S.	D	30.03.2005	
626	LABOURER	KHEDKAR LAXMAN KUSHABHAU	D	30.03.2005	
627	LABOURER	THOMBARE NARAYAN GANGARAM	D	16.05.2005	
628	LABOURER	SHELAR VIJAY PARSHURAM	D	07.06.2005	
629	LABOURER	KHADE TANAJI TUKARAM	D	28.06.2005	
630	LABOURER	BANDE POPAT DAGADU	D	28.06.2005	
631	LABOURER	PALAV SAMEER BHASKAR	D	01.04.2005	
632	LABOURER	THOTAM BALU GANPAT	D	01.04.2005	
633	LABOURER	KAMBLE VISHAL SHRIDHAR	D	01.04.2005	
634	LABOURER	BHARMAL SURESH HARKU	D	01.04.2005	
635	LABOURER	MHASALE SHASHIKANT VITHAL	D	01.04.2005	
636	LABOURER	MANDAVKAR ASHOK SAKHARAM	D	01.12.2005	
637	LABOURER	VAITI SHEKHAR DATTATRAY	D	13.01.2006	
638	LABOURER	GHANE NAMDEV DHONDU	D	13.01.2006	
639	LABOURER	SHIRODKAR SANJAY MADHUKAR	D	13.01.2006	
640	LABOURER	MOVALE GAJANAN BALU	D	05.04.2006	
641	LABOURER	ANAPAVASKAR ANANDA S.	D	09.05.2006	
642	LABOURER	KADAM RAVINDRA DATTARAM	D	24.08.2006	
643	LABOURER	RAJGURU PRASHANT RAMRAO	D	02.11.2007	
644	LABOURER	SABALE BALU SHIVRAM	D	24.06.2008	
645	LABOURER	GAWANDE BHARAT SHANKAR	D	24.06.2008	
646	LABOURER	PAWAR RAMESH RAMSING	D	09.07.2008	
647	LABOURER	KHAN ASIF ABDUL RAHIMAN	D	23.07.2008	
648	LABOURER	WARANG TUSHAR JAYWANT	D	19.07.2008	
649	LABOURER	MORE SUBHASH HARIBHAU	D	18.07.2008	
650	LABOURER	JADHAV SUNIL KRUSHNA	D	06.08.2008	
651	LABOURER	MALEKAR ROSHAN SHRIDHAR	D	21.10.2008	
652	LABOURER	MUSALE SAMEER VILAS	D	31.12.2008	
653	LABOURER	PATIL YOGESH PANDURANG	D	16.11.2009	
654	LABOURER	PAWAR MAHESH PUNDALIK	D	16.11.2009	

655	LABOURER	JUTALOLU DASHARATH H.	D	01.06.2010	
656	LABOURER	JADHAV KISHOR RAMCHANDRA	D	24.08.2010	
657	LABOURER	CHORMULE UTTAM SHANKAR	D	28.09.2011	
658	LABOURER	BHOR DHANRAJ RAMBHAU	D	22.09.2011	
659	LABOURER	SAWANT NILESH GOPAL	D	15.09.2011	
660	LABOURER	SHIAKH IMTIYAJ IBRAHIM	D	05.10.2011	
661	LABOURER	PAWAR VIKRAM FAKIRA	D	15.10.2011	
662	LABOURER	MAYEKAR RAMCHANDRA S.	D	17.10.2011	
663	LABOURER	SHINDE SHAILESH C.	D	19.10.2011	
664	LABOURER	SHINDE SACHIN RAMCHANDRA	D	13.10.2011	
665	LABOURER	SUMBHE SACHIN TULSHIRAM	D	04.10.2011	
666	LABOURER	SANGALE BHIMA SHARAD	D	04.10.2011	
667	LABOURER	PRABHAWALKAR DINESH S.	D	27.09.2011	
668	LABOURER	NAGARE BHARAT TUKARAM	D	15.10.2011	
669	LABOURER	VAREKAR GANESH SHANKAR	D	17.07.2012	

Section 4 (1) (b) (x)

Details of remuneration of officers and employees in the office of Assistant Engineer (Maintenance & Repair) F/South Ward.

SR. NO.	DESIGNATION	EMPLOYEE NAME	GR D	Basic	GRP	DA	W C	CA	SP A	TA	MM A	HRA	P D A	UW A	H I S	NT D	AA P	TOTAL SALARY
1	ASSTT. ENGINEER	BARPATRE JAGDISH D	B	23670	5400	23256		1400		1600	200	8721						64247
2	ASSTT. ENGINEER	ASIF SAFDAR HU.T.A	B	23840	5600	23392		1400		1600	200	8772						64604
3	SUB ENGINEER	NILWARN PRADEEP J	B	21970	4600	21256		463		1200	200	7971						57660
4	SUB ENGINEER	SANGEETA B. USHIRKAR	B															
5	SUB ENGINEER	NAIK MANESH-CHANDRA P	B	22260	4600	21488		463		1200	200	8058						56120
6	JUNIOR ENGINEER	KAKAD SHIVNARAYAN N.	C	10570	4300	11896		463		600	200	4461						32490
7	JUNIOR ENGINEER	JADHAV NITIN D.	C	11480	4300	12624		463		600	200	4734						34410
8	JUNIOR ENGINEER	DHAMANKAR P.P	C	11020	4300	12256		463		600	200	4596						33435
9	JUNIOR ENGINEER	MANE MILIND DINKAR	C	10570	4300	11896		463			200							27429
10	JUNIOR ENGINEER	ZIJORDE SANTOSH S.	C	10570	4300	11896		370		600	200	4461						32277
11	JUNIOR ENGINEER	THORAT KAILAS NATHA	C	10130	4300	11544		463		600	200	4329						31566
12	JUNIOR ENGINEER	GAWARI RAJENDRA MARUTI	C	9300	4300	10880		463		600	200	4080						29823
13	STORE CLERK	VEJARE GOVIND MAHADEO	C	14160	2000	12928		463		600	200	4848						34736
14	STORE MUKADAM	VACANT	D															
15	CLERK	KADAM MILIND PANDURANG	C	13870	4200	14456		463			200	428						33154

PTO

6	MUKADAM	KAMBALE BABAN GUNYA	D	10140	1850	9592	115			600	200	3597						26094
17	MUKADAM	DHANAVDE ASHOK DHONDU	D	11350	1850	10560	115			600	200	332						25007
18	MUKADAM	REDDI MOSES RANGAPPA	D	10490	1300	9432	115			1080	200	3537	930					27084
19	MUKADAM	REVALE SUBHASH MAHADEV	D	11520	1850	10696	115			600	200	4011						28992
20	MUKADAM	MADGUNDI RAMESH SAGYA	D	10670	1850	10016	115			600	200	3756						27207
21	LABOURER	SAWANT KUNAL VITHAL	D	10820	1800	10096	115			600	200	3786		300				27717
22	LABOURER	SAWANT ASHOK GANU	D	10670	1850	10016	115			600	200	3645		300	497			27893
23	LABOURER	ZURALE DHONDIRAM NAGU	D	8160	1300	6149	115			600	200	2838	942	300				20604
24	LABOURER	KAMBLE SONAJI SHIVRAM	D	10070	1800	9496	115			600	200	3561		300				26142
25	LABOURER	CHAVAN TUKARAM LAXMAN	D	10030	1300	9064	115			1080	200	3399	928	300				26416
26	LABOURER	RAHATEKAR ASHOK VASANT	D	11140	1800	10352	115			600	200	3882		300				28389
27	LABOURER	MAGARE BHIMRAO RAMCHANDRA	D	10030	1300	9064	115			1080	200	3399	928	300				26416
28	LABOURER	TALEKAR KASHIRAM P.	D	11140	1800	10352	115			600	200	3882		300				28389
29	LABOURER	DHURI PRAKASH TUKARAM	D	11140	1800	10352	115			600	200	3882		300				28389
30	LABOURER	PAWAR SHRIPAT SAMBHAJI	D	11530	1850	10704	115			600	200	4014		300				29313
31	LABOURER	PAWAR RAMESH GOVIND	D	11140	1800	10352	115			600	200	3882		300				28389
32	LABOURER	JADHAV ASHOK BHIKAJEE	D	11140	1800	10352	115			600	200	3882		300	607			28996
33	LABOURER	BHOSALE MARUTI BARKU	D	11520	1850	10696	115			600	200	4011		300				29292
34	LABOURER	JADHAV RAVINDRA P.	D	10710	1800	10008	115			600	200	3753		300				27486
35	LABOURER	MATE SUNIL PANDURANG	D	9770	1300	8856	115			1080	200	3321	904	300				25846
36	LABOURER	SAKPAL ARUN KASHIRAM	D	9180	1300	8384	115			600	200	3144	868	300				24091
37	LABOURER	SUKHDEO MAHENDRA BHAU	D	10710	1800	10008	115			600	200	3753		300				27486
38	LABOURER	GAIKWAD GAUTAM LAXMAN	D	10090	1850	10352	115			600	200	3882		300				27389
39	LABOURER	JADHAV ASHOK SHANKAR	D	10710	1800	10008	115			600	200	3753		300				27486
40	LABOURER	GADGE NAGURAO M.	D	7600	1300	7120	115			600	200	2670		300				19905
41	LABOURER	BHANGRE DAGADU KERU	D	6330	1800	6504	115			600	200	2439		300				18288
42	LABOURER	PATIL SHARAD RAMCHANDRA	D	6090	1800	6312	115			600	200	2367		300				17784

43	LABOURER	GAIKAR VIDYADHAR SHRIPAT	D	6090	1800	6312	115			600	200	2367		300				17784
44	LABOURER	SHINDE SANTOSH MADHUKAR	D	6090	1800	6312	115			600	200	2367		300				17784
45	LABOURER	KOLWATE AJAY LAXMAN	D	5630	1800	5944				600	200	2229						16403
45	LABOURER	KOLWATE AJAY LAXMAN	D	5630	1800	5944				600	200	2229						16403
46	LABOURER	KADAM AMIT MAHENDRA	D	5200	1800	5600				600	200	2100		300				15800
47	MISTRY-1	GAVANKAR CHANDRAKANT V	D	10900	1650	10040	115			1080	200	3765	930					28680
48	MISTRY-1	KUNCHIKURVE SURYAKANT R	D	10110	1650	9408	115			1080	200	3528	806					26897
49	PAINTER-II	DEVROKHAKAR SANTOSH R	D	11210	1900	10488	115			600	200	3933	904					29350
50	MASON-II	DAVID S CHENNAYYAGERI	D	10430	1600	9624	115			1080	200	3609	989					27647
51	MASON-II	SHINDE VIJAY GOPAL	D	11810	1900	10968	115			600	200	4113		300				30006
52	MASON-II	KHANDEKAR TATYABA SUKHEDEO	D	9660	1600	9008	115			1080	200	3378	898					25939
53	MISTRY-II	HANUMANTA ERAPPA	D	10870	1600	9976	115			1080	200	3741	930					28512
54	MISTRY-II	KOKARE ANANT KONDIBA	D	9850	1600	9160	115			1080	200	3435	882					26322
55	CARPENTER-II	KANGANE DHONDU SITARAM	D	9650	1600	9000	115			600	200	3375	892					25432
56	MUKADAM	YADAV RAMCHANDRA HARI	D	10350	1300	9320	115			1080	200	3495	928					26788
57	MUKADAM	MAIL RAJARAM SONU	D	10680	1600	9824	115			1080	200	3684	943		701			28827
58	MUKADAM	DHUMAK ATMARAM SHRIPAT	D	10370	1300	9336	115			1080	200	3501	928					26830
59	MUKADAM	TALEKAR LAXMAN SHANKAR	D	10680	1600	9824	115			1080	200	3684	878		580			28641
60	MUKADAM	SAWANT ANANT PANDURANG	D	11530	1850	10704	115			600	200	4014						29013
61	MUKADAM	KURNE ARUN LAXMAN	D	11770	1900	10936	115			600	200	4101						29622
62	MUKADAM	JADHAV MOHAN VITHAL	D	11210	1850	10448	115			600	200	3918						28341
63	WOMAN LAB.	BAIT DARSHANA DHANAJI	D	10350	1800	9720	115			600	200	3645						26430
64	WOMAN LAB.	REDDI CELIN SAMUAL	D	9710	1800	9208	115			600	200	3453						25086
65	WOMAN LAB.	JADHAV SUMITRA SUNIL	D	9370	1800	8936				600	200	3351			523			24780
66	WOMAN LAB.	SAWANT ADITI ALANKAR	D	5860	1800	6128				600	200	2298						16886
67	WOMAN LAB.	JAYALAXMI VYANKATESH	D	6360	1300	6128				600	200	2298						16886
68	LABOURER	PAGAR MAHESH NATHURAM	D	8940	1300	6656	115			990	200	3072	868		744			22885
69	LABOURER	R KANNAN RANGASWAMY	D	10530	1800	9864	115			600	200	3699			731			27539
70	LABOURER	GOSAVI SATYAVIJAY AMRNATH	D	10820	1800	10096	115			600	200	0						23631
71	LABOURER	KADAM DILIP YESHWANT	D	9050	1300	8280	75			1080	200	3105	928					24018
72	LABOURER	BHOGALE RAWJI SHRIDHAR	D	8290	1300	6905	115			1032	200	2877	828					21547
73	LABOURER	SK ABDULRAJAK DADAMIYA	D	9880	1300	8944	115			1080	200	3354	916					25789
74	LABOURER	VAGELA VINODA VITHL	D	9770	1300	7970	115			1032	200	3321	904					24612
75	LABOURER	JADHAV ASHOK DHAKOO	D	9630	1300	8744	115			600	200	3279	892		698			25458
76	LABOURER	KUNCHIKURVE ASHOK YELLAPA	D	11140	1800	10352	115			600	200	3882						28089
77	LABOURER	VADAL ANANT MAHADEO	D	9880	1300	8944	115			1080	200	3354	916					25789
78	LABOURER	MOSAMKAR SURESH DHON-	D	11140	1800	10352	115			600	200	3882						28089

		DU															
79	LABOURER	BANSODE BHASKAR R	D	11140	1800	10352	115			600	200	3882			570		28659
80	LABOURER	SUWARE TUKARAM SHIWA	D	10220	1300	9216	115			1080	200	3456	916				26503
81	LABOURER	LAXMAN TULSHYA	D	10230	1300	9224	115			1080	200	3459	916				26524
82	LABOURER	KADAM ANANT SHIVRAM	D	9880	1300	8944	115			600	200	0	916				21955
83	LABOURER	SUWARE CHANDRAKANT S	D	10300	1300	9280	115			1080	200	3480	892				26647
84	LABOURER	PAWAR GAUTAM DADU	D	10820	1800	10096	115			600	200	3786			731		28148
85	LABOURER	DHAWDE YESHWANT BABU	D	10110	1300	9128	115			1080	200	3423	904				26260
86	LABOURER	SALUNKE JITENDRA MOTIRAM	D	11210	1850	10448	115			600	200	322					24745
87	LABOURER	SURVE MOHAN ANANT	D	10110	1300	9128	115			1080	200	3423	904				26260
88	LABOURER	TALEKAR DATTARAM DHONDU	D	9960	1300	9008	115			1080	200	3378	892				25933
89	LABOURER	BANDRE VASANT DAULAT	D	9960	1300	9008	115			1080	200	3378	892				25933
90	LABOURER	JADHAV BABAN SAMBHAJI	D	10710	1800	10008	115			600	200	3753					27186
91	LABOURER	JADHAV DHANPAL PANDU	D	10180	1300	9184	115			1080	200	3444	880				26383
92	LABOURER	KANDALI SAYABU YALLAPPA	D	10610	1800	9928	115			600	200	3723					26976
93	LABOURER	KHARAT UTTAM KASHINATH	D	9500	1300	8640	115			1080	200	3240	880				24955
94	LABOURER	KURME VIJAY SHANKAR	D	10710	1800	10008	115			600	200	3753					27186
95	LABOURER	KANGANE DHONDU PANDURANG	D	9840	1300	8912	115			1080	200	3342	880				25669
96	LABOURER	GHAG SANJAY VASUDEV	D	9500	1300	8640	115			1080	200	3240	880				24955
97	LABOURER	SAYYAD ISAQ MAHAMAD	D	10960	1850	10248	115			600	200	3843					27816
98	LABOURER	JADHAV PRAKASH GANGARAM	D	10960	1850	10248	115			600	200	3843			651		28467
99	LABOURER	TALEKAR SAKHARAM SOMA	D	9840	1300	8912	115			1080	200	3342	880				25669
100	LABOURER	KHADYE RAVINDRA SOMA	D	10960	1850	10248	115			600	200	3843					27816
101	LABOURER	NAIK LOKESH HUCHAPPA	D	10960	1850	10248	115			600	200	3843					27816
102	LABOURER	SHIVGAN MANOHAR RUPA	D	9510	1300	8648	115			600	200	3243	880				24496
103	LABOURER	KHARADE HARISHCHANDRA L	D	10530	1800	9864	115			600	200	3699					26808
104	LABOURER	JAGRIA VIJAYKUMAR V	D	9840	1300	8912	115			1080	200	3342	880				25669
105	LABOURER	TALEKAR RAMCHANDRA S	D	10530	1800	9864	115			600	200	3699					26808

106	LABOURER	MULE SURYA-KANT SADASHIV	D	9840	1300	8912	115			1080	200	3342	880					25669
107	LABOURER	PHATAK BAJIRAO APPA	D	10960	1850	10248	115			600	200	3843						27816
108	LABOURER	HIRE BALASAHEB KHANDU	D	10530	1800	9864	115			600	200	3699						26808
108	LABOURER	HIRE BALASAHEB KHANDU	D	10530	1800	9864	115			600	200	3699						26808
109	LABOURER	PERIYASWAMI K DEVENDRA	D	10530	1800	9864	115			600	200	3699						26808
110	LABOURER	PARVADI NARENDRA GOVIND	D	9840	1300	8912	115			600	200	3342	880					25189
111	LABOURER	KALKAR DATARAM SOMA	D	9840	1300	8912	115			1080	200	3342	880					25669
112	LABOURER	SHIRKE DILEEP RAJARAM	D	9840	1300	8912	115			1080	200	3342	880		398			26067
113	LABOURER	YARGUDE RAJAN ANNAPPA	D	7950	1300	7400	115			600	200	2775	815					21155
114	LABOURER	KUNCHIKAR MOHAN RAMU	D	10530	1800	9864	115			600	200	3699						26808
115	LABOURER	SIPRE MUKESH IRAPPA	D	9840	1300	8912	115			1080	200	3342	880					25669
116	LABOURER	DALVI SHASHIKANT SADANAND	D	10780	1850	10104	115			600	200	3789						27438
117	LABOURER	MALAP SURESH TUKARAM	D	10780	1850	10104	115			600	200	3789						27438
118	LABOURER	PATIL RAJIV DNYANDEO	D	10780	1850	10104	115			600	200	3789	868		726			29032
119	LABOURER	PERIASWAMI AARIYAPPAN	D	9250	1300	8440	115			1080	200	3165	868					24418
120	LABOURER	GAIKWAD HARISCHANDRA N	D	10780	1850	10104	115			600	200	3789						27438
121	LABOURER	KAMBLE SHARAD TUKARAM	D	9240	1300	8432	115			1080	200	3162	868					24397
122	LABOURER	THOMBARE PRADIP DEVAJI	D	9560	1300	8688	115			1080	200	3258	868					25069
123	LABOURER	CHALKE RAMESH GAURU	D	9900	1300	8960	115			1080	200	3360	804					25719
124	LABOURER	KAMBLE SANJAY BABOO	D	8230	1300	6862	115			600	200	2859	792					20958
125	LABOURER	KAMBLE CHANDRAKANT PUNAJI	D	9570	1300	8696	115			1080	200	3261	804					25026
126	LABOURER	TALEKAR MANOHAR TUKARAM	D	10300	1800	9680	115			600	200	3630						26325
127	LABOURER	RANE ATMARAM MADHUKAR	D	9780	1300	8864	115			1080	200	3324	792					25455
128	LABOURER	HADKAR KESHAV MOTIRAM	D	10670	1850	10016	115			600	200	3756	792					27999
129	LABOURER	GURAV ASHOK SHANKAR	D	10300	1800	9680	115			600	200	3630			688			27013
130	LABOURER	WAGHAMARE TARACHAND P	D	9020	1300	8256	115			1080	200	3096	792		703			24562
131	LABOURER	KAMBLE YASHAWANT R	D	9450	1300	8600	115			1080	200	3225	792					24762
132	LABOURER	DANGE SUNIL DATTARAM	D	10670	1850	10016	115			600	200	3756						27207

133	LABOURER	DHADVE NARAYAN BAPU	D	9780	1300	8864	115			1080	200	3324	792					25455
134	LABOURER	GAJGHAT RAJU RAKHMAJI	D	10300	1800	9680	115			600	200	3630						26325
135	LABOURER	TALEKAR SHANTARAM P	D	9450	1300	8600	115			1080	200	3225	792					24762

136	LABOURER	KAMBLE DHARMENDRA SHIVRAM	D	10470	1800	9816	115			600	200	3681			670			27352
137	LABOURER	KAMBLE VILAS PARSHURAM	D	10300	1800	9680	115			600	200	3630						26325
138	LABOURER	SAGVEKAR ANIL SAKHARAM	D	10840	1850	10152	115			600	200	3807			630			28194
139	LABOURER	MANE SUHAS BHASKAR	D	10300	1800	9680	115			600	200	3630						26325
140	LABOURER	PARAB DILIP PUNDALIK	D	10670	1850	10016	115			600	200	3756						27207
141	LABOURER	SABBAN DIPAK GANPAT	D	10670	1850	10016	115			600	200	3756						27207
142	LABOURER	NAIK PRAKASH GANESH	D	10670	1850	10016	115			600	200	3756						27207
143	LABOURER	JADHAV SUNIL GANPAT	D	8860	1800	8528	115			600	200	3198						23301
144	LABOURER	KALKAR PRAKASH GANPAT	D	9780	1300	8864	115			1080	200	3324	792					25455
145	LABOURER	WAGHELA RAJU FAKIR	D	9370	1800	8936	115			600	200	3351						24372
146	LABOURER	RONGTE TUKARAM WALU	D	8900	1800	8560	115			600	200	3210						23385
147	LABOURER	KHETADE BALU LAHANU	D	8900	1800	8560	115			600	200	3210						23385
148	LABOURER	PARDHI SAHEBRAO RAMA	D	7340	1300	6912	115			600	200	2592						19059
149	LABOURER	SHISHUPAL SUDHAKAR W	D	8900	1800	8560	115			600	200	3210						23385
150	LABOURER	PAWASKAR SANTOSH M	D	7340	1300	6912	115			1080	200	2592						19539
151	LABOURER	UPADHYE SHARAD LALA	D	8900	1800	8560	115			600	200	3210						23385
152	LABOURER	SABALE NIRVUTI T	D	8900	1800	8560	115			600	200	3210						23385
153	LABOURER	JADHAV TUSHAR BABAN	D	6840	1800	6912	115			600	200	2592						19059
154	LABOURER	GONDAL PARADEEP TULAJI	D	6840	1800	6912	115			600	200	2592						19059
155	LABOURER	SABALE AJAY VASANT	D	6840	1800	6912	115			600	200	2592						19059
156	LABOURER	M VEERAN	D	6840	1800	6912	115			600	200	2592						19059
157	LABOURER	PATSUPE BABAN SADASHIV	D	6840	1800	6912	115			600	200	2592						19059
158	LABOURER	SONAWANE LAXMAN KACHARU	D	6840	1800	6912	115			600	200	2592						19059
159	LABOURER	KARANDE KIRHOR DHANAJI	D	6840	1800	6912	115			600	200	2592						19059
160	LABOURER	KAMBLE DILIP SADASHIV	D	7340	1300	6912	115			1080	200	2592						19539
161	LABOURER	WADIKAR RUPESH RAGHUNATH	D	7340	1300	6912	115			1080	200	2592						19539

16 2	LABOURER	TAMBE RAKESH GANGARAM	D	7340	1300	6912	115			1080	200	2592				190		19729
16 3	LABOURER	SHIRSAT RAHUL CHANDRAKANT	D	6840	1800	6912	115			600	200	2592				190		19249
16 4	LABOURER	BHISE SACHIN SHAYAMRAO	D	6840	1800	6912	115			600	200	2592						19059
16 5	LABOURER	KADAM SANDIP PRAKASH	D	6580	1800	6704	115			1200	200	2514						19113
16 6	LABOURER	NAIDU RAJENDRAN V	D	6580	1800	6704	115			600	200	2514						18513
16 7	LABOURER	GAIKWAD JAGNATH S	D	6590	1300	6312	115			1080	200	2367						17964
16 8	LABOURER	AAREKAR PRAVIN RAMESH	D	6330	1800	6504	115			600	200	2439						17988
16 9	LABOURER	RATHOD RAMESHWART	D	6330	1800	6504	115			600	200	2439						17988
17 0	LABOURER	DABHADE KISAN NAMDEO	D	6330	1800	6504	115			600	200	2439						17988
17 1	LABOURER	BARMADE VITTHAL DHONDU	D	6830	1300	6504	115			1080	200	2439						18468
17 2	LABOURER	MISHRA YOGENDRA BRAMHADEV	D	6830	1300	6504	115			1080	200	2439						18468
17 3	LABOURER	BHAPKAR SANJAY VITTHAL	D	6830	1300	6504	115			1080	200	2439						18468
17 4	LABOURER	BHOIR BHARAT MAHADU	D	6330	1800	6504	115			600	200	2439						17988
17 5	LABOURER	TAMBEKAR KUNDLIKY	D	6090	1800	6312	115			600	200	2367						17484
17 6	LABOURER	ADHAV SURYAKANT DYANDEV	D	6830	1300	6504	115			1080	200	2439						18468
17 7	LABOURER	CHAUDHARI PARSHURAM AMRUT	D	6830	1300	6504	115			600	200	2439						17988
17 8	LABOURER	SURVE PRAMOD BALIRAM	D	6590	1300	6312	115			2160	200	2367						19044
17 9	LABOURER	JADHAV DEEPAK UTTAM	D	6590	1300	6312	115			2160	200	2367						19044
18 0	LABOURER	FARERA SANJAY ANTHONY	D	6590	1300	6312	115			1200	200	2367						18084
18 1	LABOURER	MANE GANESH SHANTARAM	D	6090	1800	6312	115			600	200	2367						17484
18 2	LABOURER	KASKAR SAINATH KASHINATH	D	6150	1800	6360				600	200	2385						17495
18 3	LABOURER	BHOIR VITTHAL VASANT	D	5630	1800	5944				600	200	2229						16403
18 4	LABOURER	PAWAR SHASHIKANT R	D	5200	1300	5200				600	200	1950						14450
18 5	LABOURER	KADER LAXMAN BABANNA	D	5630	1800	5944				600	200	2229						16403
18 6	LABOURER	SATPUTE SUNIL SHIVAJI	D	4800	1300	4880				600	200	1830						13610
18 7	LABOURER	LOHAR GANESH SHIVRAM	D	4800	1300	4880				600	200	1830						13610
18 8	LABOURER	NAIK NILESH JAGANNATH	D	4800	1300	4880				600	200	1830						13610
18 9	LABOURER	BHAGLI AJAY RAGHUNATH	D	5630	1800	5944				600	200	2229						16403

190	LABOURER	VISHE RAJENDRA LAXMAN	D	5630	1800	5944				600	200	2229						16403
191	LABOURER	NIRPUTE MANOHAR PADU	D	5630	1800	5944				600	200	2229						16403
192	LABOURER	SOMVATE RAJESH ANANTA	D	5200	1300	5200				600	200	1950						14450
193	LABOURER	RASKAR DATTARAY MUGUTRAO	D	5630	1800	5944				600	200	2229						16403
194	LABOURER	GHADGE DEVRAJ MAHADEV	D	4800	1300	4880				600	200	1830						13610
195	LABOURER	BODKE DILIP SADASHIV	D	4800	1300	4880				600	200	1830						13610
196	LABOURER	PANSARE ANKUSH LAXMAN	D	5630	1800	5944				600	200	2229						16403
197	LABOURER	RANE SACHIN KRISHNAJI	D	5630	1800	5944				600	200	2229						16403
198	LABOURER	JADHAV RAJKUMAR S	D	5630	1800	5944				600	200	2229						16403
199	LABOURER	SHINDE DILIP SURESHRAO	D	4800	1300	4880				600	200	1830						13610
200	LABOURER	PATIL JAYPRAKASH P	D	4800	1300	4880				600	200	1830						13610
201	LABOURER	FAIMODIN ALIMODIN	D	5630	1800	5944				600	200	2229						16403
202	LABOURER	MAHADIK SHEKHAR DATTARAM	D	4800	1300	4880				600	200	1830						13610
203	LABOURER	RATHOD SANDIP BABURAO	D	5630	1800	5944				600	200	2229						16403
204	LABOURER	AHER SHANKAR JAGANNATH	D	4800	1300	4880				600	200	1830						13610
205	LABOURER	NAIK VIJAY ARUN	D	5410	1800	5768				600	200	2163						15941
206	LABOURER	DOLAS HARI-CHANDRA LAHU	D	5630	1800	5944				600	200	2229						16403
207	LABOURER	PAWAR INDAL AMARSINGH	D	4800	1300	4880				600	200	1830						13610
208	LABOURER	TARE VINOD GANPAT	D	5630	1800	5944				600	200	2229						16403
209	LABOURER	WAGHMARE GANPAT TUKARAM	D	5410	1800	5768				600	200	2163						15941
210	LABOURER	TAKLE DAJI DADARAO	D	5410	1800	5768				600	200	2163						15941
211	LABOURER	DUBAYWAD GAJANAN MA-ROTRAO	D	5410	1800	5768				1200	200	2163						16541
212	LABOURER	NAVARE SHARAD BHIVA	D	5200	1800	5600				600	200	2100						15500
213	LABOURER	SHRINGARPURE AJAY MARTAND	D	10340	1800	9712	115			600	200	3642						26409
214	LABOURER	KAMBLE ASHOK GOVIND	D	7400	1300	5655	75			600	200	2610	928	200	696			19664
215	LABOURER	SAKPAL MAHENDRA MURARI	D	7150	1300	4901	75			600	200	2535	897	200				17858
216	LABOURER	SAKTHIVEL MALLAN	D	6880	1300	4172	115			906	200	2454	881					16908
217	LABOURER	RANE RAJENDRA GANPAT	D	7150	1300	4310	75			906	200	2535	792					17268
218	MISTRY I	PATIL RAVINDRA SITARAM	D	10500	1650	9720	115			1080	200	3645	989		0	0		27899

219	MISTRY I	LAD SUBHASH DOULAT	D	10830	1650	9984	115			1080	200	3744	1022		0	190		28815
220	PAINTER II	MAJALKAR SANTOSH DHONDU	D	9510	1600	8888	115			1080	200	3333	792		0	0		25518
221	PAINTER II	JADHAV PRAKASH SHRIPAT	D	9510	1600	8888	115			1080	200	3333	792		0	0		25518
222	PLUMBER II	GAWADE UTTAM MAHADEV	D	9730	1600	9064	115			1080	200	3399	928		0	0		26116
223	PLUMBER II	SURVE VIJAY RAGHUNATH	D	10800	1900	10160	115			600	200	3810	0		0	0		27585
224	MASON II	WADAYE VITHAL BUDHAJI	D	10580	1600	9744	115			1080	200	3654	974		0	0		27947
225	MISTRY II	JADHAV KIRAN T	D	10580	1600	9744	115			1080	200	3654	974		715	0		28662
226	LABOURER	JADHAV PANDURANG J	D	11210	1850	10448	115			600	200	3918	892		764	0		29997
227	LABOURER	NARSALE KESHAV RUMA	D	11260	1800	10448	115			600	200	3918	0		0	0		28341
228	LABOURER	PASTE BALIRAMS	D	10370	1300	9336	115			1080	200	3501	928		0	0		26830
229	LABOURER	SUWARE YESHWANT G	D	11260	1800	10448	115			600	200	3918	0		0	0		28341
230	LABOURER	TALEKAR ATAMARAM G	D	10730	1300	9624	115			1080	200	3609	928		0	0		27586
231	LABOURER	PERUSWAMI SELPAN	D	9240	1300	8432	115			600	200	3162	916		0	0		23965
232	LABOURER	SHELAR ANANT MANSING	D	10220	1300	9216	115			1080	200	3456	916		0	0		26503
233	LABOURER	WAGHRI RAJU SHANKAR	D	9960	1300	9008	115			1080	200	3378	892		0	0		25933
234	LABOURER	INGAWALE RAVINDRA RAMJI	D	9630	1300	8744	115			1080	200	3279	892		0	0		25240
235	LABOURER	KAMBLE VISHWAS HIROO	D	8130	1300	7544	115			600	200	2829	845		0	190		21753
236	LABOURER	PARVATE GANGARAM DNYANU	D	9450	1300	8600	115			1080	200	3225	792		0	0		24762
237	LABOURER	SAWANT PRAKASH GANGARAM	D	10840	1850	10152	115			600	200	3807	0		407	0		27971
238	LABOURER	MAHADE UDAY BABYA	D	9450	1300	8600	115			1080	200	3225	792		0	0		24762
239	LABOURER	CHAUGULE DATTARAM K	D	9450	1300	8600	115			1080	200	3225	792		0	190		24952
240	LABOURER	TAWADE PRABHAKAR R	D	9450	1300	8600	115			1080	200	3225	792		0	0		24762
241	LABOURER	SALUNKHE GORAKHNATH A	D	6330	1800	6504	115			600	200	2439	0		0	0		17988
242	LABOURER	KANOJA SHARAD LAXMAN	D	6330	1800	6504	115			600	200	2439	0		0	0		17988
243	LABOURER	PATIL SHIVAJI GANPATI	D	6330	1800	6504	115			600	200	2439	0		0	0		17988
244	LABOURER	PATIL PANKAJ KESHAV	D	6330	1800	6504	115			600	200	2439	0		0	0		17988
245	LABOURER	JADHAV LALCHAND DEVRAM	D	6590	1300	6312	115			1080	200	2367	0		0	0		17964
246	LABOURER	GODE ARUN VASUDEV	D	6330	1800	6504	115			600	200	2439	0		0	0		17988
247	LABOURER	CHANDORKAR NITIN MARUTI	D	6090	1800	6312	115			600	200	2367	0		0	0		17484
248	LABOURER	MORE KAILAS MANOHAR	D	6590	1300	6312	115			1080	200	2367	0		0	0		17964

249	LABOURER	NAIR ABHILASH ARJUN	D	6330	1800	6504	115			1200	200	2439	0		0	0		18588
250	LABOURER	GAWADE RUPESH BALKRISHNA	D	6590	1300	6312	115			1080	200	2367	0		0	0		17964
251	LABOURER	PATIL MANOJ RAMESH	D	6360	1300	6128	115			1080	200	2298	0		0	0		17481
252	LABOURER	SAWANT SACHIN LAXMAN	D	5630	1800	5944	0			600	200	2229	0		0	0		16403
253	LABOURER	AMBRE SACHIN TUKARAM	D	4800	1300	4880	0			600	200	1830	0		0	0		13610
254	LABOURER	PATIL YUVRAJ SITARAM	D	4800	1300	4880	0			600	200	1830	0		0	0		13610
255	LABOURER	AEER SANDEEP SHANKAR	D	4800	1300	4880	0			600	200	1830	0		0	0		13610
256	LABOURER	SOLANKI BHARAT TULSI	D	4800	1300	4880	0			600	200	1830	0		0	0		13610
257	LABOURER	CHAUDHARI DAJI JANAYA	D	4800	1300	4880	0			600	200	1830	0		0	0		13610
258	LABOURER	TANDEL SANJAY PARSHURAM	D	5630	1800	5944	0			600	200	2229	0		0	0		16403
259	LABOURER	BUCHADE SANDEEP BABURAO	D	5630	1800	5944	0			600	200	2229	0		0	0		16403
260	LABOURER	TOHAKE ANANT HARI	D	4800	1300	4880	0			600	200	1830	0		0	0		13610
261	LABOURER	CHAVAN RUSHIRAJ ANAND	D	5630	1800	5944	0			600	200	2229	0		0	0		16403
262	LABOURER	JADHAV VINOD KASHIRAM	D	5630	1800	5944	0			600	200	2229	0		0	0		16403
263	LABOURER	SHIVGAN HARSHNATH G	D	5410	1800	5768	0			600	200	2163	0		0	0		15941
264	ELECTRICIAN II	PARAB NARESH VASANT	D	10480	1650	9704	115			1080	200	3639	959		0	0		27827
265	WIREMAN I	SHITKAR SHARAD ANANT	D	11730	1900	10904	115			600	200	4089	0		0	0		29538
266	PLUMBER II	TALEKAR SITARAM SOMA	D	9960	1600	9248	115			1080	200	3468	943		0	0		26614
267	PLUMBER II	KAVADE KISAN RAGHOO	D	9280	1600	8704	115			1080	200	3264	804		0	0		25047
268	PLUMBER II	KAMBLE BHAGOJI SHRIPATI	D	9090	1600	8552	115			1080	200	3207	867		0	0		24711
269	MASON II	NAKADE ASHOK LAXMAN	D	10500	1600	9680	115			1080	200	346	974		0	0		24495
270	MASON II	KAMBLE AVINASH SAKHARAM	D	9090	1600	8552	115			1080	200	3207	867		0	0		24711
271	MUKADAM	GAIKWAD DATTARAM MARUTI	D	10230	1300	9224	115			1080	200	3459	930		0	0		26538
272	WIREMAN III	CHAVAN KRISHNA SHIVAJI	D	10300	1600	9520	115			1080	200	387	916		0	0		24118
273	WIREMAN III	PAWAR ARUN SHIVAJI	D	8570	1600	8136	115			1080	200	3051	926		0	0		23678
274	LABOURER	MEHATAR ANIL BALKRISHNA	D	10030	1300	9064	115			1080	200	3399	928		0	190		26116
275	LABOURER	GURAO PRABHAKAR GUNAJI	D	11260	1800	10448	115			600	200	3918	0		477	0		28818

276	LABOURER	KADAM SU-RESH DIN-KAR	D	11670	1850	10816	115			0	200	0	0	0	0		24651
277	LABOURER	PATIL EK-NATH AT-MARAM	D	10370	1300	9336	115			1080	200	3501	928	0	190		26830
278	LABOURER	RAMANE SHANTARAM SOMA	D	10030	1300	9064	115			1080	200	3399	928	0	190		26116
279	LABOURER	MORE SHRIDHAR JAIRAM	D	9890	1300	8952	115			1080	200	3357	916	0	0		25810
280	LABOURER	KASAB SAMUEL PRABHAKAR	D	10230	1300	9224	115			1080	200	3459	916	0	0		26524
81	LABOURER	WAGHARI RAJU SAKHARA	D	9890	1300	8952	115			1080	200	3357	916	0	0		25810
282	LABOURER	KANGANE MAHADEV LAXMAN	D	9770	1300	8856	115			1080	200	3321	904	0	0		25546
283	LABOURER	JAYAWANT NIRANJAN M	D	10110	1300	9128	115			1080	200	3423	892	0	0		26248
284	LABOURER	SABALE ARVIND KRISHNAJI	D	9770	1300	8856	115			1080	200	3321	904	0	0		25546
285	LABOURER	PANCHAL DHONDU VITHOBA	D	9120	1300	8336	115			1080	200	3126	904	0	0		24181
286	LABOURER	PATEL BHAGWAN MOHAN	D	8880	1300	8144	115			1080	200	3054	880	0	0		23653
287	LABOURER	SAWANT MANGESH NARAYAN	D	8700	1300	8000	75			600	200	3000	892	0	0		22767
288	LABOURER	VAIDYA SHYAM EKNATH	D	9630	1300	8744	115			1080	200	3279	892	0	0		25240
289	LABOURER	MANDAVKAR R L	D	9250	1300	8440	115			1080	200	3165	804	637	0		24991
290	LABOURER	YADAV SHRIRANG DINKAR	D	10670	1850	10016	115			600	200	3756	0	0	0		27207
291	LABOURER	BORKAR VIJAY NATHURAM	D	9250	1300	8440	115			1080	200	3165	804	0	0		24354
292	LABOURER	WARADKAR PRASAD MURLIDHAR	D	10300	1800	9680	115			600	200	3630	0	0	0		26325
293	LABOURER	WAVEKAR BALRAJ NAMDEO	D	9780	1300	8864	115			1080	200	3324	792	751	0		26206
294	LABOURER	JAGARIYA KISHORKUMAR J	D	9180	1300	8384	115			1080	200	3144	897	0	0		24300
295	LABOURER	MULE RAMESH POPAT	D	8870	1300	8136	115			1080	200	3051	897	0	0		23649
296	LABOURER	SHELAR PRAKASH DATTATRAY	D	9780	1300	8864	115			1080	200	3324	792	0	0		25455
297	LABOURER	KEDARE ASHOK YANKAPPA	D	9450	1300	8600	115			1080	200	3225	792	725	0		25487
298	LABOURER	CHINCHWALKAR CHANDRAKANT	D	9450	1300	8600	115			1080	200	3225	792	656	190		25418
299	LABOURER	KORDE PRATAP LAXMAN	D	9020	1300	8256	115			1080	200	3096	845	0	0		23912
300	LABOURER	KAMBLE SURESH RAMCHANDRA	D	10300	1800	9680	115			600	200	3630	0	0	0		26325
301	LABOURER	MURCHITAL YESUDAS BABU	D	8870	1300	8136	115			1080	200	3051	845	0	190		23597

302	LABOURER	KAMBLE DEE-PAK KASHIRAM	D	10300	1800	9680	115			600	200	0	0		0	0		22695
303	LABOURER	DHURE UDAY NAMDEO	D	9780	1300	8864	115			1080	200	3324	792		0	0		25455
304	LABOURER	JANVALKAR DEEPAK VIT-THAL	D	9780	1300	8864	115			1080	200	3324	792		0	0		25455
305	LABOURER	KANADE BHANU TUKARAM	D	9780	1300	8864	115			1080	200	3324	792		0	0		25455
306	LABOURER	BHOSALE UMESH ANANT	D	9980	1850	9464	115			600	200	3549	0		0	0		25758
307	LABOURER	MANE SANTOSH SHAMRAO	D	8800	1300	8080	115			1080	200	3030	926		0	0		23531
308	LABOURER	KORADE NATHU LAXMAN	D	7600	1300	7120	115			1080	200	2670	0		0	0		20085
309	LABOURER	GHARE DNYA-NESHWAR GAN-PAT	D	8900	1800	8560	115			600	200	3210	0		0	0		23385
310	LABOURER	RANE PANDU-RANG KRISHNAJI	D	7600	1300	7120	115			1080	200	2670	0		0	0		20085
311	LABOURER	PAWAR SANTOSH TUKARAM	D	8900	1800	8560	115			600	200	3210	0		0	0		23385
312	LABOURER	PALKAR SWAPNIL K	D	7600	1300	7120	115			1080	200	2670	0		0	0		20085
313	LABOURER	KALE SURESH DHULAJI	D	8900	1800	8560	115			600	200	3210	0		0	0		23385
314	LABOURER	ROKADE SHA-SHIKANT Y	D	6840	1800	6912	115			600	200	2592	0		0	190		19249
315	LABOURER	SARWADE RAHUL JANU	D	6840	1800	6912	115			600	200	2592	0		0	190		19249
316	LABOURER	BHOSALE MANOJ SHIVAJI	D	6840	1800	6912	115			600	200	2592	0		0	0		19059
317	LABOURER	KAMBLE RAHUL KESHAV	D	6840	1800	6912	115			600	200	2592	0		0	0		19059
318	LABOURER	BEJADI JALAN-DAR SAYANNA	D	7340	1300	6912	115			1080	200	2592	0		0	0		19539
319	LABOURER	JADHAV NITIN RAMCHANDRA	D	6580	1800	6704	115			600	200	2514	0		0	0		18513
320	LABOURER	BHAMARE ANAND JAYSING	D	7080	1300	6704	115			1080	200	2514	0		0	0		18993
321	LABOURER	BHOSALE MANGESH NARAYAN	D	6580	1800	6704	115			600	200	2514	0		0	0		18513
322	LABOURER	HELIYA RAJESH MULJI	D	6840	1800	6912	115			600	200	2592	0		0	0		19059
323	LABOURER	JADHAV ARVIND BENDURAM	D	6580	1800	6704	115			600	200	2514	0		0	0		18513
324	LABOURER	LOKHANDE SANTOSH UTTAM	D	6330	1800	6504	115			1200	200	2439	0		0	0		18588
325	LABOURER	SALVE BALA BHASKAR	D	7080	1300	6704	115			1080	200	2514	0		0	0		18993
326	LABOURER	JADHAV SANJAY BANDU	D	6830	1300	6504	115			1080	200	2439	0		0	0		18468
327	LABOURER	PADELKAR JAGESH MALOJI	D	6830	1300	6504	115			1080	200	2439	0		0	0		18468
328	LABOURER	MALADKAR RAHUL VASANT	D	6580	1800	6704	115			600	200	2514	0		0	0		18513
329	LABOURER	MHATRE SMIT HARISHCHANDRA	D	6090	1800	6312	115			600	200	2367	0		0	0		17484

330	LABOURER	MHASKULE VI-NAYAK DNYANDEV	D	6330	1800	6504	115			600	200	2439	0		0	0		17988
331	LABOURER	DAINGADE SANJAY SOPAN	D	6330	1800	6504	115			600	200	2439	0		0	0		17988
332	LABOURER	SANAP ASHOK KARBHARI	D	6330	1800	6504	115			600	200	2439	0		0	0		17988
333	LABOURER	MASAL SHIVAJI DINKAR	D	6330	1800	6504	115			600	200	2439	0		0	0		17988
334	LABOURER	POTKULE GANESH NIVRUTTI	D	6830	1300	6504	115			1080	200	2439	0		0	0		18468
335	LABOURER	JAKHERE JAYDARTH R.	D	6830	1300	6504	115			1080	200	2439	0		0	0		18468
336	LABOURER	PASHTE RAVINDRA MARUTI	D	6610	1300	6328	115			1080	200	2373	0		0	0		18006
337	LABOURER	CHAVAN NANDKUMAR GANESH	D	6330	1800	6504	115			600	200	2439	0		0	0		17988
338	LABOURER	GAVKAR PRAMOD PARSHURAM	D	6330	1800	6504	115			600	200	2439	0		0	0		17988
339	LABOURER	WASKAR PRAKASH RAMCHANDRA	D	6830	1300	6504	115			1080	200	2439	0		0	0		18468
340	LABOURER	KADAM SHASHANK ANKUSH	D	6590	1300	6312	115			1080	200	2367	0		0	0		17964
341	LABOURER	BOBHATE GAJANAN DATTRAM	D	6090	1800	6312	115			600	200	2367	0		0	0		17484
342	LABOURER	PATIL DEVENDRA KAMALAKAR	D	6360	1300	6128	115			1080	200	2298	0		0	0		17481
343	LABOURER	MHATRE MANGESH H	D	6360	1300	6128	115			1080	200	2298	0		0	0		17481
344	LABOURER	BHOSALE TANAJI DHARMAJI	D	5630	1800	5944	0			600	200	2229	0		0	0		16403
345	LABOURER	BHOIR MANGALDAS BABURAO	D	4800	1300	4880	0			600	200	1830	0		0	0		13610
346	LABOURER	GHARAT SANTOSH RAMU	D	4800	1300	4880	0			600	200	1830	0		0	0		13610
347	LABOURER	CHILE SANTOSH MADHUKAR	D	4800	1300	4880	0			600	200	1830	0		0	0		13610
348	LABOURER	KUTE SACHIN SADASHIV	D	5630	1800	5944	0			600	200	2229	0		0	0		16403
349	LABOURER	KADAM UDAY SAKHARAM	D	5630	1800	5944	0			600	200	2229	0		0	0		16403
350	LABOURER	RAORANE MANGESH SHANTARAM	D	5630	1800	5944	0			600	200	2229	0		0	0		16403
351	LABOURER	KAMBLE MILIND GAGARAM	D	5630	1800	5944	0			600	200	2229	0		0	0		16403
352	LABOURER	AVHAD VITHOBA MADHUKAR	D	4800	1300	4880	0			600	200	1830	0		0	0		13610
353	LABOURER	JOSHI RAKESH MADUKAR	D	5630	1800	5944	0			600	200	2229	0		0	0		16403
354	LABOURER	HULE SANTOSH GURUNATH	D	5630	1800	5944	0			600	200	2229	0		0	0		16403
355	ELECTRICIAN I	DANDAVATE SAMBHAJI SHIDU	D	11210	1800	10408	115			1080	200	3903	1022		0	0		29738
356	ELECTRICIAN I	SAKAT RAJENDRA PANDURANG	D	10700	1950	10120	115			600	200	3795	0		0	0		27480

357	PUMP OPERATOR	PADAWE SHA-SHIKANT BHIWAJI	D	9810	1600	9128	115			1080	200	3423	904		0	0		26260
358	CARPENTER I	CHINCHWALKAR ATAMARAM GANU	D	11420	1650	10456	115			1080	200	3921	1041		696	0		30579
359	WIREMAN II	RAUT DILIP SHANKAR	D	9970	1600	9256	115			1080	200	3471	936		0	0		26628
360	LIFTMAN	TAKKE VIJAY DHONDU	D	10250	1600	9480	115			1080	200	3555	916		0	0		27196
361	LIME WASHER	GOVALKAR PRABHAKAR S	D	9890	1300	8952	115			1080	200	3357	916		660	0		26470
362	LIME WASHER	SALUNKHE PRAKASH SITARAM	D	9450	1300	8600	115			1080	200	3225	792		0	190		24952
363	PLUMBER II	JADHAV MANGESH LAXMAN	D	9090	1600	8552	115			0	200	309	867	300	0			21033
364	MASON II	KANGANE DATARAM LAXMAN	D	10970	1600	10056	115			1080	200	3771	1004	300	0			29096
365	CARPENTER II	MESTRY SURYAKANT LAXMAN	D	10970	1600	10056	115			1080	200	3771	989	300	0			29081
366	MASON III	TUPE MOHAN SUBRAO	D	10600	1900	10000	115			600	200	3750	864	300	0			28329
367	LABOURER	DHAWADE GANESH TUKARAM	D	10110	1300	9128	115			1080	200	322	904	300	0			23459
368	LABOURER	SHAIKH NAZIR AHMED	D	9630	1300	8744	115			1080	200	3279	699	300	0			25347
369	LABOURER	GAIKAR MANOHAR SAMBHAJI	D	9250	1300	8440	115			1080	200	3165	804	300	0			24654
370	LABOURER	KINI AJAY VITHAL	D	9130	1300	8344	115			1080	200	3129	972	300	0			24570
371	LABOURER	KAMBLE RAMAKANT NARAYAN	D	9450	1300	8600	115			1080	200	3225	792	300	519			25581
372	LABOURER	TALEKAR PRAKASH DHAKTU	D	9450	1300	8600	115			1080	200	3225	792	300	0			25062
373	LABOURER	MAIL SURESH BUDHAJI	D	9450	1300	8600	115			1080	200	3225	792	300	0			25062
374	LABOURER	SHANKAR ASHAPPA	D	9450	1300	8600	115			1080	200	3225	792	300	0			25062
375	LABOURER	MORE PRAKASH LAXMAN	D	9450	1300	8600	115			1080	200	3225	792	300	0			25062
376	LABOURER	PATIL NANDKUMAR SITARAM	D	9450	1300	8600	115			1080	200	3225	792	300	0			25062
377	LABOURER	SAWANT SADASHIV GOVIND	D	9780	1300	8864	115			1080	200	3324	792	300	0			25755
378	LABOURER	BHOIR RAJAN BHASKAR	D	8580	1800	8304	115			600	200	3114	0	300	0			23013
379	LABOURER	MANE RAMESH TANAJI	D	7340	1300	6912	115			1080	200	2592	0	300	0			19839
380	LABOURER	JITIYA JAGDISHK	D	6830	1300	6504	115			1080	200	2439	0	300	0			18768
381	LABOURER	JADHAV BHAGAJI DEVRAM	D	6830	1300	6504	115			1080	200	2439	0	300	0			18768
382	LABOURER	ROKADE ASHOK ANANDA	D	6330	1800	6504	115			600	200	2439	0	300	0			18288
383	LABOURER	KADAM RAVINDRA RAMCHANDRA	D	6090	1800	6312	115			600	200	2367	0	300	0			17784
384	LABOURER	BANDE BALU SITARAM	D	4800	1300	4880	0			600	200	1830	0	300	0			13910

385	LABOURER	GHADAGE SAN-TOSH RAMESH	D	5630	1800	5944	0			600	200	2229	0	300	0			16703
386	LABOURER	PATIL MILIND NASHIK	D	4800	1300	4880	0			600	200	1830	0	300	0			13910
387	LABOURER	AVHAD TRAM-BAK PANDU	D	4800	1300	4880	0			600	200	1830	0	300	0			13910
389	LABOURER	SARUKTE MAD-HUKAR NAMDEO	D	5630	1800	5944	0			600	200	2229	0	300	0			16703
390	LABOURER	PINGALE NAM-DEV PANDU-RANG	D	5630	1800	5944	0			600	200	2229	0	300	0			16703
91	LABOURER	MANE RAJEN-DRA YALLAPA	D	5630	1800	5944	0			600	200	2229	0	300	0			16703
392	LABOURER	DHUMAL PANDIT MARUTI	D	5630	1800	5944	0			600	200	2229	0	300	0			16703
393	LABOURER	GAWAD AVI-NASH JAGAN-NATH	D	5630	1800	5944	0			600	200	2229	0	300	0			16703
394	LABOURER	CHINCHWALKAR PRAKASH S	D	4620	1300	4736	0			600	200	1776	0	0	0			13232
395	MUKADAM	CHAVDA AALJI MEGHJI	D	9560	1300	8688	115			1080	200	3258	916	0	0			25117
396	MUKADAM	CHAVRIYA KI-SAN RAMCHAN-DRA	D	9770	1300	8856	115			1080	200	317	892	0	0			22530
397	SWEEPER	BHADRAKA DHANUBAI KHIMJI	D	11140	1800	10352	115			600	200	3882	0	190	0			28279
398	SWEEPER	KOLI GANGABAI VINOD	D	9890	1300	8952	115			1080	200	3357	916	190	0			26000
399	SWEEPER	JADHAV DAYAL MITHA	D	9890	1300	8952	115			1080	200	3357	916	190	0			26000
400	SWEEPER	WAGH TEJU WALJI	D	11140	1800	10352	115			600	200	3882	0	190	0			28279
401	SWEEPER	SOLANKI RA-MESH DANJI	D	10820	1800	10096	115			600	200	3786	0	190	0			27607
402	SWEEPER	SALVE SAVLA-RAM LAHOOJI	D	9630	1300	8744	115			600	200	3279	892	190	0			24950
403	SWEEPER	PAWAR MAHA-DEV YELOO	D	9630	1300	8744	115			600	200	3279	892	190	0			24950
404	SWEEPER	JADHAV SULO-CHANA LAXMAN	D	9630	1300	8744	115			1080	200	3279	892	190	0			25430
405	SWEEPER	SAKPAL BABAN BHIKAJI	D	9630	1300	8744	115			600	200	3279	892	190	0			24950
406	SWEEPER	BAGDI VIJENDRA BIRAMSINGH	D	9190	1300	8392	115			600	200	3147	942	190	0			24076
407	SWEEPER	SAWANT INDU-MATI BHAGU-RAM	D	9630	1300	8744	115			600	200	3279	892	190	0			24950
408	SWEEPER	JADHAV ANIL ARJUN	D	10530	1800	9864	115			600	200	3699	0	190	631			27629
409	SWEEPER	KOLI NARAN MAVJI	D	9250	1300	8440	115			1080	200	3165	804	190	0			24544
410	SWEEPER	DHUMAK DHON-DU SAVA	D	10660	1800	9968	115			600	200	3738	804	190	0			28075
411	SWEEPER	MARU ARJUN DANJI	D	10660	1800	9968	115			600	200	3738	0	190	0			27271
412	SWEEPER	KATPARA DEVJI AALJI	D	9250	1300	8440	115			1080	200	3165	804	190	0			24544
413	SWEEPER	PAWAR RAVIN-DRA SAMBHAJI	D	10660	1800	9968	115			600	200	3738	0	190	751			28022
414	SWEEPER	BAGDI MANOJ BIRAMSINGH	D	9250	1300	8440	115			1080	200	3165	804	190	0			24544

415	SWEEPER	KADAM PRA-KASH GOPAL	D	9250	1300	8440	115			1080	200	3165	804	190	0			24544
416	SWEEPER	PATOLE SANJIV VITTHAL	D	9130	1300	8344	115			1080	200	3129	892	190	0			24380
417	SWEEPER	SHIRWALE RAMESH BHANU-DAS	D	10180	1800	9584	115			600	200	3594	0	190	0			26263
418	SWEEPER	PAWAR ARUN HARI	D	10180	1800	9584	115			600	200	3594	0	190	537			26800
419	SWEEPER	PAWAR VIJAY PANDURANG	D	8870	1300	8136	115			1080	200	3051	937	190	535			24414
420	SWEEPER	MOHITE PRA-SHANT SHRI-PAT	D	7600	1300	7120	115			1080	200	2670	905	190	0			21180
421	SWEEPER	JADHAV SUGANDHA GANGARAM	D	7600	1300	7120	115			600	200	2670	905	190	0			20700
422	SWEEPER	JADHAV JASUBAI LAXMAN	D	7600	1300	7120	115			1080	200	261	871	190	0			18737
423	SWEEPER	LOHERA RAJENDRA DULICHAND	D	7600	1300	7120	115			1080	200	2670	905	190	0			21180
424	SWEEPER	SHINDE VATSALA DHONDI-BABA	D	7600	1300	7120	115			600	200	2670	871	190	0			20666
425	SWEEPER	PAGADE ANIL SAKHARAM	D	7600	1300	7120	115			1080	200	2670	905	190	0			21180
426	SWEEPER	KAMBLE HIRABANDU	D	7340	1300	6912	115			1080	200	2592	871	190	0			20600
427	SWEEPER	SINGLE SURESH DEVJI	D	7080	1300	6704	115			1080	200	2514	905	190	0			20088
428	SWEEPER	KAMBLE MADHURI MAHENDRA	D	7340	1300	6912	115			1080	200	2592	0	190	0			19729
429	SWEEPER	RATHOD NARESH KHIMJI	D	6840	1800	6912	115			600	200	2592	0	190	0			19249
430	SWEEPER	KAMBLE PRAMOD SAKHARAM	D	7080	1300	6704	115			1080	200	2514	0	190	0			19183
431	SWEEPER	PAWAR SANDEEP BALU	D	7080	1300	6704	115			1080	200	2514	0	190	0			19183
432	SWEEPER	KADAM RAKESH BANSI	D	6830	1300	6504	0			1080	200	2439	0	190	0			18543
433	SWEEPER	GOHIL KANCHAN RANA	D	6330	1800	6504	0			600	200	2439	0	190	0			18063
434	SWEEPER	SAWANT SANKETA DEEPAK	D	6090	1800	6312	0			600	200	2367	0	190	0			17559
435	SWEEPER	MARU KANTI BIJAL	D	6610	1300	6328	0			1080	200	2373	0	190	0			18081
436	SWEEPER	JADHAV AVINASH ARJUN	D	6090	1800	6312	0			600	200	2367	0	190	0			17559
437	SWEEPER	BAHOT RAVI RAJU	D	5860	1300	5515	115			600	200	2298	0	190	0			16078
438	SWEEPER	GHAG BHAVESH SUDHAKAR	D	6090	1800	6312	0			600	200	2367	0	190	0			17559
439	SWEEPER	PAWAR RUPESH GANGADHAR	D	6090	1800	6312	0			600	200	2367	0	190	0			17559
440	SWEEPER	SOLANKI VILASCHANDRA N.	D	6090	1800	6312	0			600	200	2367	0	190	0			17559
441	SWEEPER	TAK RAVI RAJESH	D	6130	1300	5944	115			600	200	2229	0	190	0			16708
442	SWEEPER	GHARNIYA MANOJ NARAYAN	D	6360	1300	6128	0			600	200	2298	0	0	0			16886

443	SWEEPER	PURANI VIJAY SURESH	D	6130	1300	5944	0			600	200	2229	0	0	0			16403
444	SWEEPER	PAWAR SUNIL SONU	D	6130	1300	5944	0			600	200	2229	0	0	0			16403
445	SWEEPER	SOLANKI BHARAT RAMAN	D	5200	1800	5600	0			600	200	2100	0	0	0			15500
446	SWEEPER	JADHAV JAY-WANT HARI	D	5410	1800	5768	0			600	200	2163	0	0	0			15941
447	SWEEPER	SOLANKI KAMLESH ASHOK	D	4440	1300	4592	0			600	200	1722	0	0	0			12854
448	SWEEPER	JADHAV DHRUBAL BHIKAJI	D	5200	1800	5600	0			600	200	2100	0	0	0			15500
449	SWEEPER	MAKWANA PURIBEN MOHAN	D	7600	1300	7120	115			1080	200	2670	871	190	0			21146
450	SWEEPER	DULGAJ VIRSINGH VIJAY-SINGH	D	6360	1300	6128	0			600	200	2298	0	190	0			17076
451	MUKADAM	KAMBLE ASHOK DHANJI	D	10820	1800	10096	115			600	200	3786	0	0	670			28087
452	SWEEPER	MANGA GORAMARU	D	9770	1300	8856	115			1080	200	3321	892	190	0			25724
453	SWEEPER	CHAVRIYA RANDHIR THAVRIYA	D	9310	1300	8488	115			600	200	3183	892	190	0			24278
454	SWEEPER	BAGUL VINAYK PUNJA	D	10620	1800	9936	115			600	200	3726	0	190	0			27187
455	SWEEPER	DHUTRE ASHOK PANDURANG	D	10290	1800	9672	115			600	200	3627	804	190	693			27991
456	SWEEPER	JADHAV ASHOK NARAYAN	D	10290	1300	9272	115			600	200	3477	804	190	0			26248
457	SWEEPER	PAWAR RAJESH AMICHAND	D	9250	1300	8440	115			1080	200	3165	804	190	0			24544
458	SWEEPER	MURDAVKAR CHANDRAKANT K.	D	9250	1300	8440	115			1080	200	3165	804	190	0			24544
459	SWEEPER	ANJARA MAHESH GOVIND	D	7500	1300	7040	115			1080	200	2640	871	190	0			20936
460	SWEEPER	KAMBLE SANDEEP SONYA	D	7340	1300	6912	115			1080	200	2592	0	190	0			19729
461	SWEEPER	JADHAV VIDYA GUNAJI	D	6900	1800	6960	115			600	200	2610	0	190	0			19375
462	SWEEPER	KAMBLE ARUN LAXMAN	D	6580	1800	6704	115			600	200	2514	0	190	0			18703
463	SWEEPER	SHINGAVLE BHARTI VIJAY	D	6090	1800	6312	0			600	200	2367	0	190	0			17559
464	SWEEPER	KAMBLE SANJAY SAKHARAM	D	6360	1300	6128	0			1080	200	2298	0	190	0			17556
465	SWEEPER	WAGHELA GIRISH PRAKASH	D	6360	1300	6128	0			600	200	2298	0	190	0			17076
466	SWEEPER	MAKWANA NITIN AALJI	D	6360	1300	6128	0			600	200	2298	0	190	0			17076
467	SWEEPER	THAKUR VAISHALI NARESH	D	4440	1300	4592	0			600	200	1722	0	0	0			12854
468	SWEEPER	GOHIL VINOD MANGAL	D	4440	1300	4592	0			600	200	1722	0	0	0			12854
469	SWEEPER	SAWANT DEEPAK BALKRISHNA	D	10530	1800	9864	115			600	200	3699	0	190	0			26998
470	SWEEPER	NAGLE RAMESH BHIKAJI	D	10530	1800	9864	115			600	200	3699	0	190	0			26998

471	SWEEPER	KUMBHAR PRAKASH BAPU	D	9480	1800	9024	115			600	200	3384	0	190	0			24793
472	SWEEPER	ADIWAREKAR ASHOK GOKUL	D	9250	1300	8440	115			1080	200	3165	804	190	0			24544
473	SWEEPER	SOLANKI VASANTI NARESH	D	10030	1300	9064	115			1080	200	3399	916	190			0	26294
474	SWEEPER	VALODARA SUMAN PRAKASH	D	8900	1800	8560	115			600	200	3114	0	190			0	23479
475	SWEEPER	SOLANKI SANJAY P.	D	6360	1300	6128	0			600	200	2298	0	190			0	17076
76	MUKADAM	ZALA PALJI PUNJA	D	10490	1300	9432	115			1080	200	3537	959	0			0	27113
477	SWEEPER	SOLANKI PITAMBAR DANJI	D	9960	1300	9008	115			1080	200	3378	892	190			0	26123
478	SWEEPER	KAGDA KISAN MOTIRAM	D	10660	1800	9968	115			600	200	3738	0	190			0	27271
479	SWEEPER	MAWANA MUKESH AMBALAL	D	7050	1300	6680	115			600	200	2505	804	190			0	19444
480	SWEEPER	TANK BEENA HARIKISAN	D	7600	1300	7120	115			1080	200	2670	905	190			0	21180
481	SWEEPER	KAMBLE SANTOSH GUNAJI	D	7600	1300	7120	115			600	200	2670	871	190			0	20666
482	SWEEPER	MAKWANA PREMJI MANGAL	D	6840	1800	6912	115			600	200	2592	0	190			0	19249
483	SWEEPER	DAYMA NARESH ASHOK	D	6840	1800	6912	115			600	200	2592	0	300			0	19359
484	SWEEPER	NAGLE PRAKASH BHIKAJI	D	7080	1300	6704	115			1080	200	2514	0	190			0	19183
485	SWEEPER	JADHAV ASHWINI ASHOK	D	6680	1800	6784	115			600	200	2544	0	190			0	18913
486	SWEEPER	SINGAL DINESH ARUN	D	6610	1300	6328	0			1080	200	2373	0	190			0	18081
487	SWEEPER	TUPARE VIKAS LAXMAN	D	6130	1300	5944	0			600	200	2229	0	190			0	16593
488	SWEEPER	MAKWANA BHARAT MADHAVJI	D	6130	1300	5944	0			600	200	2229	0	0			0	16403
489	SWEEPER	JADHAV MANOJ RAJARAM	D	4440	1300	4592	0			600	200	1722	0	0			0	12854
490	SWEEPER	GOHIL MAVJI HIRA	D	7080	1300	6704	115			1080	200	2514	0	190			0	19183
491	SWEEPER	BORICHA BIPIN ARVIND	D	5830	1300	5704	0			600	200	2139	0	190			0	15963
492	SWEEPER	AUSARMAL JAGNATH R.	D	7340	1300	6912	115			1080	200	2592	871	190			0	20600
493	ELECTRICIAN 2	KUMBHAR BALU BABU	D	10550	1650	9760	115			1080	200	3660	1004	0			0	28019
494	HALALKHOR	CHAVAN BABU DEVJI	D	10610	1300	9528	115			0	200	0	940	300			335	23328
495	LABOUR	SAKAT DAGDU RAGHUNATH	D	9510	1300	8648	115			0	200	0	880	0			313	20966
496	LABOUR	PATIL NIMISH MEGHNATH	D	6090	1800	6312	0			600	200	2367	0	0			0	17369
497	STAGE ATTENDENT	SHAIKH MAJIDULLA ISMAIL	D	12200	1900	11280	115			0	200	0	979	0			350	27024
498	STAGE ATTENDENT	JADHAV PRAKASH BHIKYA	D	8900	1800	8560	115			0	200	0	0	0			0	19575
499	MASON-II	GUDIASE HANUMANTRAO N	D	10770	1900	10136	115			600	200	3801	0	300	0			27822
500	MISTRY-II	MARE MANOAR SIDHU	D	11020	1900	10336	115			600	200	3876	0	300	631			28978

501	DIVER	SALVI GOVIND VITTHAL	D	10300	1600	9520	115			1080	200	3570	973	300	718			28376
502	MUKADAM	BALLAPA HANUMANIA	D	10890	1850	10192	115			600	200	3822	0	300	0			27969
503	MUKADAM	GAWADE DAT-TARAM BHIWA	D	11170	1850	10416	115			600	200	3906	0	300	621			29178
504	MUKADAM	GOTAD MOHAN LAXMAN	D	11170	1850	10416	115			600	200	3906	0	300	0			28557
505	MUKADAM	JADHAV NARANDRE ABAJI	D	10030	1300	9064	115			1080	200	3399	919	300	0			26407
506	MUKADAM	JADHAV RAVINDRA YESHWANT	D	11060	1850	10328	115			600	200	323	0	300	0			24776
507	MUKADAM	JADHAV KISHOR VITHOO	D	9700	1300	8800	115			1080	200	3300	880	300	0			25675
508	MUKADAM	JADHAV PRAMOD PANDURANG	D	11090	1850	10352	115			600	200	3882	0	300	0			28389
509	MUKADAM	KAMBLE YASHWANT VITHAL	D	11480	1850	10664	115			600	200	3999	0	300	0			29208
510	MUKADAM	KAMBLE DAT-TARAM SHIVRAM	D	11060	1850	10328	115			600	200	3873	0	300	0			28326
511	MUKADAM	SALISTEKAR PRAVIN NARAYAN	D	11090	1850	10352	115			600	200	3882	0	300	0			28389
512	MUKADAM	KAMBLE HARI DAMAJI	D	12020	1900	11136	115			600	200	4176	0	300	0			30447
513	MUKADAM	KANGANE SHANTARAM BUDHAJI	D	9630	1300	8744	115			1080	200	3279	881	300	593			26122
514	MUKADAM	KOTHAMIRE SURESH MAHADEO	D	10460	1850	9848	115			600	200	3693	0	300	729			27795
515	MUKADAM	MATVANKAR DILIP SHRIDHAR	D	11170	1850	10416	115			600	200	3906	0	300	632			29189
516	MUKADAM	PADELKAR VIJAY ANANT	D	11570	1900	10776	115			600	200	4041	0	300	0			29502
517	MUKADAM	PADELKAR PRADEEP TUKARAM	D	10780	1850	10104	115			600	200	0	0	300	0			23949
518	MUKADAM	PEDNEKAR ARVIND DAMODHAR	D	11170	1850	10416	115			600	200	3906	0	300	0			28557
519	MUKADAM	KAMBLE RAJARAM DHONDU	D	12210	1900	11288	115			600	200	4233	0	300	0			30846
520	MUKADAM	SAWANT PRAKASH BABU	D	10820	1850	10136	115			600	200	3801	0	300	632			28454
521	PLUNGERMAN	JADHAV BHIMSEN MAHADEO	D	11440	1800	10592	115			600	200	3972	0	300	0			29019
522	PLUNGERMAN	DEVENDRA SHAMUGAM R.	D	10710	1800	10008	115			600	200	3753	0	300	0			27486
523	PLUNGERMAN	FADALE DNYANESHWAR DHONDU	D	9250	1300	8440	115			1080	200	3165	804	300	0			24654
524	PLUNGERMAN	JADHAV ASHOK KERU	D	9880	1300	8944	115			1080	200	3354	904	300	695			26772
525	PLUNGERMAN	JADHAV VIJAY NARAYAN	D	11560	1800	10688	115			600	200	4008	0	300	0			29271
526	PLUNGERMAN	KAMBLE ANANT RATNU	D	11550	1800	10680	115			600	200	4005	0	300	704			29954
527	PLUNGERMAN	SALUNKE MOHAN TUKARAM	D	11010	1800	10248	115			600	200	3843	0	300	704			28820

528	PLUNGER-MAN	SHEVADE RAMESH DHONDIRAM	D	10300	1800	9680	115			600	200	3630	0	300	713		27338
529	PLUNGER-MAN	TIRLOTKAR VIJAY BHIKAJI	D	10300	1800	9680	115			600	200	3630	0	300	0		26625
530	PLUNGER-MAN	VALAPKAR ANKUSH SASHARAM	D	10300	1800	9680	115			600	200	3630	0	300	0		26625
531	PLUNGER-MAN	PATIL JYOTIRAM MAHADEO	D	9170	1300	8376	115			1080	200	3141	897	300	0		24579
532	PLUNGER-MAN	SAKPAL SIDDHARTH GUNAJI	D	9450	1300	8600	115			1080	200	3225	792	300	0		25062
533	LABOURER	BANKAR PRABHAKAR GAJANAN	D	9450	1300	8600	115			1080	200	3225	792	300	0		25062
534	LABOURER	BETKAR SURESH LAXMAN	D	9120	1300	8336	115			600	200	3126	904	300	705		24706
536	LABOURER	CHOWKEKAR SHANTARAM S.	D	9560	1300	8688	115			1080	200	3258	0	300	0		24501
537	LABOURER	GAJAMAL VILAS RAGHUNATH	D	9560	1300	8688	115			1080	200	3258	804	300	0		25305
538	LABOURER	GHAG BABURAO RAMCHANDRA	D	10660	1850	10008	115			600	200	3753	0	300	0		27486
539	LABOURER	GOSAVI SUNIL RAMCHANDRA	D	10095	1300	9116	115			1080	200	3419	792	300	0		26417
540	LABOURER	JADHAV ANIL CHANDAR	D	10300	1800	9680	115			600	200	3630	0	300	0		26625
541	LABOURER	KADAM MAHJENDRA SAKHARAM	D	9840	1300	8912	115			600	200	3342	880	300	0		25489
542	LABOURER	KAMBLE PRAKASH VITHAL	D	6900	0	5520	115			600	200	2070	0	300	0		15705
543	LABOURER	KANGNE VIJAY GANU	D	10710	1800	10008	115			600	200	3753	0	300	0		27486
544	LABOURER	KHARAT RAVINDRA RAMCHANDAR	D	7780	1300	7264	115			600	200	2724	868	300	0		21151
545	LABOURER	KUNCHIKURVE NARSAPPA N.	D	9880	1300	8944	115			600	200	3354	0	300	0		24693
546	LABOURER	RAHATEKAR PRASHANT VASANT	D	9450	1300	8600	115			1080	200	3225	792	300	0		25062
547	LABOURER	MHAVLANGEKAR SANJAY S.	D	10710	1800	10008	115			600	200	3753	0	300	669		28155
548	LABOURER	MOHITE CHANDRAKANT RAMA	D	11400	1300	10160	115			600	200	3810	940	300	0		28825
549	LABOURER	MORE NARENDRA RAGHUNATH	D	10300	1800	9680	115			600	200	3630	0	300	485		27110
550	LABOURER	PAGARE NILKANTH VISHNU	D	10710	1800	10008	115			600	200	3753	0	300	0		27486
551	LABOURER	PATIL ANIL SHANKAR	D	10820	1800	10096	115			600	200	3786	0	300	0		27717
552	LABOURER	RUKE SUNIL MAHADEO	D	10300	1800	9680	115			600	200	3630	0	300	0		26625
553	LABOURER	SALUNKE SADA SHIV TUKARAM	D	7750	1560	7448	115			600	200	2793	2178	300	0		22944
554	LABOURER	SAVNE MANOHAR MARUTI	D	10610	1300	9528	115			1080	200	3573	940	300	0		27646
555	LABOURER	SAWANT PRAKASH TATU	D	10820	1800	10096	115			600	200	3786	0	300	0		27717

556	LABOURER	SHINDE GANESH KESHAV	D	9450	1300	8600	115			1080	200	3225	792	300	0			25062
557	LABOURER	SUWARE SUNIL RAMCHANDRA	D	10300	1800	9680	115			600	200	3630	0	300	0			26625
558	LABOURER	VEER SURESH TUKARAM	D	9980	1800	9424	115			600	200	3534	0	300	0			25953
559	LABOURER	WALKAR SANJAY GOPAL	D	0	0	0	0			0	0	0	0	0	0			0
560	LABOURER	WAPHELKAR SANDESH RAJARAM	D	10300	1850	9720	115			600	200	3645	0	300	0			26730
561	LABOURER	KYADGI YELAPPA TIPANNA	D	10010	1300	9048	115			1080	200	3393	939	300	0			26385
562	LABOURER	SAWANT SURESH BABU	D	9830	1800	9304	115			600	200	3489	0	300	0			25638
563	LABOURER	KAMBLE BABURAO SHIVRAM	D	9380	1800	8944	115			600	200	3354	0	300	0			24693
564	LABOURER	BHALERAO ARUN MAHADEO	D	7410	1300	6968	115			1080	200	2613	915	300	0			20901
565	LABOURER	KABADI SURESH KASHINATH	D	7720	1300	7216	115			1080	200	2706	1324	300	0			21961
566	LABOURER	AEER ANANDKUMAR VITHOBA	D	6840	1800	6912	115			600	200	2592	0	300	0			19359
567	LABOURER	PAWAR SANTOSH BHAGURAM	D	6840	1800	6912	115			600	200	2592	0	300	0			19359
568	LABOURER	SHINDE SACHIN RAMCHANDRA	D	6840	1800	6912	115			600	200	2592	0	300	0			19359
569	LABOURER	HEDULKAR NARESH LUMAJI	D	6840	1800	6912	115			600	200	2592	0	300	0			19359
570	LABOURER	ARWEL BABASAHEB KERU	D	6840	1800	6912	115			600	200	2592	0	300	0			19359
571	LABOURER	SHINDE SUNIL SHIVRAM	D	6840	1800	6912	115			600	200	2592	0	300	0			19359
572	LABOURER	SHINDE SANTOSH C.	D	6840	1800	6912	115			600	200	2592	0	300	0			19359
573	LABOURER	KAMBLE KAPIL MOHAN	D	6840	1800	6912	115			600	200	2592	0	300	0			19359
574	LABOURER	DEOKATE SAMBHAJI MALHARI	D	6090	1800	6312	0			600	200	2367	0	300	0			17669
575	LABOURER	PATIL VISHWAS DAGADU	D	6330	1800	6504	0			600	200	2439	0	300	0			18173
576	LABOURER	RATHOD DILIP SAWAJI	D	5860	1800	6128	0			600	200	2298	0	300	0			17186
577	LABOURER	PATIL VINESH PRABHAKAR	D	5630	1800	5944	0			600	200	2229	0	300	0			16703
578	LABOURER	KHOPADE SUNIL RAMCHANDRA	D	5630	1800	5944	0			600	200	2229	0	300	0			16703
579	LABOURER	YEDE SANJAY WAMAN	D	5630	1800	5944	0			600	200	2229	0	300	0			16703
580	LABOURER	PALVE SHIVAJI DAGADU	D	4800	1300	4880	0			600	200	1830	0	300	0			13910
581	LABOURER	KARJEKAR PRADEEP GANPAT	D	4800	1300	4880	0			600	200	1830	0	300	0			13910
582	LABOURER	CHAUDHARI RAVINDRA GOVIND	D	4800	1300	4880	0			600	200	1830	0	300	0			13910
583	LABOURER	KALKATE DILIP SUDHAKAR	D	4800	1300	4880	0			600	200	1830	0	300	0			13910
584	LABOURER	PHADTARE PRAKASH R.	D	4800	1300	4880	0			600	200	1830	0	300	0			13910

585	LABOURER	GOPAL SUNIL BALU	D	4800	1300	4880	0			600	200	1830	0	300	0			13910
586	LABOURER	LONE EKNATH MARUTI	D	5630	1800	5944	0			600	200	2229	0	300	0			16703
587	LABOURER	KHAN SAJID JAHID ALI	D	5630	1800	5944	0			600	200	2229	0	300	0			16703
588	LABOURER	WAKULKAR RAVINDRA SHANKAR	D	4800	1300	4880	0			600	200	1830	0	300	0			13910
589	LABOURER	PATIL CHANDRA-SHEKHAR P.	D	4800	1300	4880	0			600	200	1830	0	300	0			13910
590	LABOURER	GAGE KISHOR PARSHURAM	D	5630	1800	5944	0			600	200	2229	0	300	0			16703
591	LABOURER	PATIL SUSHIL GOPAL	D	5630	1800	5944	0			600	200	2229	0	300	0			16703
592	LABOURER	CHAWAN PRAKASH SAWAIRM	D	5410	1800	5768	0			600	200	2163	0	300	0			16241
593	LABOURER	MAHATRE ASHOK DUNDYA	D	4620	1300	4736	0			600	200	1776	0	300	0			13532
594	LABOURER	KOLWANKAR PRAKASH GIRISH	D	5410	1800	5768				1200	200	2163	0	300	0			16841
595	LABOURER	KEDARE AMIT SUKHADEV	D	4620	1300	4736	0			600	200	1776	0	300	0			13532
596	LABOURER	PONNUSWAMY K. V.	D	9450	1300	8600	115			1080	200	3225	792	300	0			25062
597	LABOURER	PAWAR SHIVRAM RAMJI	D	9450	1300	8600	115			1080	200	3225	792	300	0			25062
598	LABOURER	WADKAR NARESH DEVRAMJI	D	9450	1300	8600	115			1080	200	3225	792	300	0			25062
599	LABOURER	SHIRKE ASHOK SUBHASH	D	9170	1300	8376	115			1080	200	3141	897	300	0			24579
600	LABOURER	KUNCHIKURVE NAGAPPA S.	D	8610	1800	8328	115			600	200	3123	0	300	0			23076
601	LABOURER	DEODHAR BABU RAMAN	D	10350	1800	9720	75			600	200	3645	0	300	0			26690
602	LABOURER	DHOTRE SHANTARAM APPAJI	D	10670	1850	10016	115			600	200	3756	0	300				27507
603	LABOURER	DHUMAK SITARAM SHRIPAT	D	9570	1300	8696	115			1080	200	3261	868	300	0			25390
604	LABOURER	JADHAV MAHENDRA SAKHARAM	D	10780	1850	10104	115			600	200	3789	0	300	0			27738
605	LABOURER	JADHAV RAMCHANDRA S.	D	10780	1800	10064	115			600	200	3774	0	300	0			27633
606	LABOURER	JADHAV ASHOK LAXMAN	D	10300	1800	9680	115			600	200	3630	0	300	617			27242
607	LABOURER	KAMBLE AJIT SAHDEO	D	6450	1300	6200	75			600	200	2325	792	300	0			18242
608	LABOURER	KANGANE MANOHAR BHAGA	D	10470	1800	9816	115			600	200	3681	0	300	705			27687
609	LABOURER	LAVANDE SITARAM NANA	D	8930	1300	8184	115			600	200	3069	0	300	0			22698
610	LABOURER	LOKE DIGAMBAR ANKUSH	D	8940	1300	8192	75			600	200	3072	740	200	0			23319
611	LABOURER	MALKAPPA YELLAPPA	D	11440	1800	10592	115			600	200	3972	0	300	0			29019
612	LABOURER	MOHITE PRAMOD SHANKAR	D	5180	1300	5184	115			600	200	1944	0	300	0			14823
613	LABOURER	MUMBARKAR MADHUKAR R.	D	11440	1800	10592	115			600	200	3972	0	300	0			29019
614	LABOURER	NADANKAR RAHUL VISHNU	D	11550	1800	10680	115			600	200	4005	0	300	653			29903

615	LABOURER	PANDERE VIJAY SITARAM	D	10780	1800	10064	115			600	200	3774	0	300	616			28249
616	LABOURER	PARAB ANIL BABI	D	9980	1850	9464	115			600	200	3549	0	300	0			26058
617	LABOURER	PATIL KAILAS JANARDAN	D	10820	1800	10096	115			600	200	3786	0	300	0			27717
618	LABOURER	PATIL NARENDRA BHIWA	D	10660	1800	9968	115			600	200	3738	0	300	0			27381
619	LABOURER	PENDARKAR RAJESH JAIRAM	D	10300	1800	9680	115			600	200	3630	0	300	0			26625
620	LABOURER	SAWANT VIJAY ANANT	D	10660	1800	9968	115			600	200	3738	0	300	0			27381
621	LABOURER	NAIDU MOSES SUNDARRAO	D	9980	1800	9424	115			600	200	3534	0	300	0			25953
622	LABOURER	SHINDE BHASKAR BHIKU	D	0	0	0	0			0	0	0	0	0	0			0
623	LABOURER	PAWAR SANDESH SHANTARAM	D	9370	1800	8936	115			600	200	3351	0	300	0			24672
624	LABOURER	PINGALE DEEPAK VASANT	D	8900	1800	8560	115			600	200	3210	0	300	0			23685
625	LABOURER	TAMHANKAR HARESH S.	D	7720	1300	7216	115			1080	200	2706	1461	300	0			22098
626	LABOURER	KHEDKAR LAXMAN KUSHABHAU	D	8900	1800	8560	115			600	200	3210	0	300	0			23685
627	LABOURER	THOMBARE NARAYAN GANGARAM	D	7600	1300	7120	115			1080	200	2670	0	300	0			20385
628	LABOURER	SHELAR VIJAY PARSHURAM	D	8900	1800	8560	115			600	200	3210	0	300	0			23685
629	LABOURER	KHADE TANAJI TUKARAM	D	8580	1800	8304	115			600	200	3114	0	300	0			23013
630	LABOURER	BANDE POPAT DAGADU	D	7600	1300	7120	115			1080	200	2670	0	300	0			20385
631	LABOURER	PALAV SAMEER BHASKAR	D	7600	1300	7120	115			1080	200	2670	0	300	0			20385
632	LABOURER	THOTAM BALU GANPAT	D	7600	1300	7120	115			1080	200	2670	0	300	0			20385
633	LABOURER	KAMBLE VISHAL SHRIDHAR	D	8900	1800	8560	115			600	200	3210	0	300	0			23685
634	LABOURER	BHARMAL SURESH HARKU	D	8900	1800	8560	115			600	200	3210	0	300	0			23685
635	LABOURER	MHASALE SHASHIKANT VITHAL	D	7600	1300	7120	115			1080	200	2670	0	300	0			20385
636	LABOURER	MANDAVKAR ASHOK SAKHARAM	D	7100	1800	7120	115			600	200	2670	0	300	0			19905
637	LABOURER	VAITI SHEKHAR DATTATRAY	D	7340	1300	6912	115			1080	200	2592	0	300	0			19839
638	LABOURER	GHANE NAMDEV DHONDU	D	6840	1800	6912	115			600	200	2592	0	300	0			19359
639	LABOURER	SHIRODKAR SANJAY MADHUKAR	D	6840	1800	6912	115			600	200	2592	0	300	0			19359
640	LABOURER	MOVALE GAJANAN BALU	D	6840	1800	6912	115			600	200	2592	0	300	0			19359
641	LABOURER	ANAPAVASKAR ANANDA S.	D	6840	1800	6912	115			600	200	2592	0	300	0			19359
642	LABOURER	KADAM RAVINDRA DATARAM	D	6580	1800	6704	0			600	200	2514	0	300	0			18698

643	LABOURER	RAJGURU PRASHANT RAMRAO	D	6580	1800	6704	0			600	200	2514	0	300	0			18698
644	LABOURER	SABALE BALU SHIVRAM	D	0	0	0	0			0	0	0	0	0	0			0
645	LABOURER	GAWANDE BHARAT SHANKAR	D	6330	1800	6504	0			600	200	2439	0	300	0			18173
646	LABOURER	PAWAR RAMESH RAMSING	D	6330	1800	6504	0			600	200	2439	0	300	0			18173
647	LABOURER	KHAN ASIF ABDUL RAHIMAN	D	6330	1800	6504	0			600	200	2439	0	300	0			18173
648	LABOURER	WARANG TUSHAR JAYWANT	D	6330	1800	6504	0			600	200	2439	0	300	0			18173
649	LABOURER	MORE SUBHASH HARIBHAU	D	6330	1800	6504	0			600	200	2439	0	300	0			18173
650	LABOURER	JADHAV SUNIL KRUSHNA	D	6330	1800	6504	0			600	200	2439	0	300	0			18173
651	LABOURER	MALEKAR ROUSHAN SHRIDHAR	D	6090	1800	6312	115			1200	200	2367	0	300	0			18384
652	LABOURER	MUSALE SAMEER VILAS	D	6330	1800	6504	0			600	200	2439	0	300	0			18173
653	LABOURER	PATIL YOGESH PANDURANG	D	6090	1800	6312	0			600	200	2367	0	300	0			17669
654	LABOURER	PAWAR MAHESH PUNDALIK	D	6090	1800	6312	0			600	200	2367	0	300	0			17669
655	LABOURER	JUTALOLU DASHARATH H.	D	5860	1800	6128	0			600	200	2298	0	300	0			17186
656	LABOURER	JADHAV KISHOR RAMCHANDRA	D	5860	1800	6128	0			600	200	2298	0	300	0			17186
657	LABOURER	CHORMULE UTTAM SHANKAR	D	4800	1300	4880	0			600	200	1830	0	300	0			13910
658	LABOURER	BHOR DHANRAJ RAMBHAU	D	4800	1300	4880	0			600	200	1830	0	300	0			13910
659	LABOURER	SAWANT NILESH GOPAL	D	5630	1800	5944	0			600	200	2229	0	300	0			16703
660	LABOURER	SHIAKH IMTIYAJ IBRAHIM	D	4800	1300	4880	0			600	200	1830	0	300	0			13910
661	LABOURER	PAWAR VIKRAM FAKIRA	D	5630	1800	5944	0			600	200	2229	0	300	0			16703
662	LABOURER	MAYEKAR RAMCHANDRA S.	D	5630	1800	5944	0			600	200	2229	0	300	0			16703
663	LABOURER	SHINDE SHAILESH C.	D	5630	1800	5944	0			600	200	2229	0	300	0			16703
664	LABOURER	SHINDE SACHIN RAMCHANDRA	D	5630	1800	5944	0			600	200	2229	0	300	0			16703
665	LABOURER	SUMBHE SACHIN TULSHIRAM	D	5630	1800	5944	0			600	200	2229	0	300	0			16703
666	LABOURER	SANGALE BHIMA SHARAD	D	5630	1800	5944	0			600	200	2229	0	300	0			16703
667	LABOURER	PRABHAWALKAR DINESH S.	D	4800	1300	4880	0			600	200	1830	0	300	0			13910
668	LABOURER	NAGARE BHARAT TUKARAM	D	5630	1800	5944	0			600	200	2229	0	300	0			16703
669	LABOURER	VAREKAR GANESH SHANKAR	D	5410	1800	5768	0			600	200	2163	0	300	0			16241

Section 4 (1) (b) (xi)

**Details of allocation of budget and disbursement made in the office of the Assistant Engineer
(Maintenance & Repair) F/South Ward for the year 2013-14.**

Sr. No.	Budget Head description	Grants received (In Lakhs)	Planned use (give details area wise or work wise in a separate form)	Remarks
1	Unforeseen Grant Beat No. 195	70.39	40.18	
2	Unforeseen Grant Beat No. 196	64.99	43.13	
3	Unforeseen Grant Beat No. 197	67.71	67.39	
4	Unforeseen Grant Beat No. 198	60	48.20	
5	Unforeseen Grant Beat No. 199	104.27	70.76	
6	Unforeseen Grant Beat No. 200	109.47	94.30	
7	Unforeseen Grant Beat No. 201	90.32	59.31	
8	Development of Parel Gaothan	25	5.43	
9	Integrated Koliwada Development Program (Sewree Koliwada)	50	Nil	
10	Gen. Civil Repairs – Administrative Bldg.	21.96	19.46	
11	Repairs to Sewree Fire Station	5.00	Nil	
12	Gen Civil Repairs School	27.50	Nil	

13	Gen Civil Repairs School (Rental Bldg)	2.00	Nil	
14	Gen. Civil repairs Street Light Post	15	Nil	
15	Gen Civil Repairs Road & Pavement Slum	87.76	49.76	
16	Gen. Civil Repairs Public Toilet PSC Block	129.23	55.95	
	Total	930.60	553.87	

Form B for previous year

Sr. No	Budget Head description	Grants received	Grant utilized	Grants Surrendered	Remark
1	Unforeseen Grant Beat No. 195	60.00	46.00	14.00	
2	Unforeseen Grant Beat No. 196	60.00	51.10	8.89	
3	Unforeseen Grant Beat No. 197	60.00	43.15	16.85	
4	Unforeseen Grant Beat No. 198	60.00	59.99	0.01	
5	Unforeseen Grant Beat No. 199	60.00	16.03	43.97	
6	Unforeseen Grant Beat No. 200	60.00	9.38	50.62	
7	Unforeseen Grant Beat No. 201	60.00	30.52	29.48	
8	Development of Parel Gaothan	25.00	13.98	11.02	
9	Integrated Koliwada Development Program (Sewree Koliwada)	25.00	14.58	10.42	
10	Gen. Civil Repairs – Administrative Bldg.	8.25	Nil	8.25	

11	Repairs to Sewree Fire Station	5.00	Nil	5.00	
12	Gen Civil Repairs School	27.57	Nil	27.57	
13	Gen Civil Repairs School (Rental Bldg)	1.00	Nil	1.00	
14	Imp of Minor Roads	100.00	Nil	100.00	
15	Gen. Civil repairs Street Light Post	15.04	11.15	3.89	
16	Gen Civil Repairs Road & Pavement Slum	87.76	78.80	8.96	
17	Gen. Civil Repairs Public Toilet PSC Block	129.23	123.38	5.85	
	Total	843.85	498.06	345.78	

Section 4 (1) (b) (xii)

Manner of execution of subsidy program in the office of Assistant Engineer (Maintenance & Repair)

Sr. No	Name and Address of Beneficiary	Amount of Subsidy / Concession Sanctioned
1	NIL	NIL

Section 4 (1) (b) (xiii)

**Particulars of recipients of concessions, permits or authorizations granted in the office of
Assistant Engineer (Maintenance & Repair)**

Sr. No	Name of the license	License no.	Issued on	Valid up to	General Conditions	Details of the license
	NIL	N.A.	N.A.	N.A.	N.A.	N.A.

Section 4 (1) (b) (xiv)

**Details of information available in electronic form in the office of Assistant Engineer
(Maintenance & Repair)**

.Sr. No.	Type of Documents file/Register	Sub Topic	In which Electronic Format it is kept	Person in Charge
	Nil	Nil	Nil	

Section 4 (1) (b) (xv)

Particulars of facilities available for citizen for obtaining information in the office of Assistant Engineer (Maintenance & Repair)

Types of facilities-

- Information about facilities for inspection of record.

Sr.No.	Type of Facility	Timings	Procedure	Location	Peron in Charge
1.	Inspection of Record	3.00 p.m. to 5.00 p.m on Tuesday and Thursday (except holidays) with prior appointment only.	For inspection of records no fee for first hour will be charged, however fee of Rs.5/- for each 15 minutes or fraction thereof will be charged thereafter.	Office of Asstt. Engineer, Maintenance & Repair Department, Room no.17& 18 2 nd Floor, F/South ward office, Parel, Mumbai-12	Asstt. Engineer, Maintenance & Repair F/South Ward.

Section 4 (1) (b) (xvi)

Details of public information officers / APIO's / appellate authority in the jurisdiction of (Public authority) in the office of Assistant Engineer (Maintenance & Repair)

PIO

Sr. No.	Name of PIO	Designation	Jurisdiction as PIO under RTI	Address / Ph. No.	E mail id for purpose of RTI	Appellate authority
1	Shri J. D. Barapatre	Asstt. Engineer (M & R) I	Electrol ward no. 199,200 & 201	Room No. 17 & 18, 2 nd floor, F/South ward office Building, Dr. B. A. Road, J. Bhatankar Marg, Parel naka, Parel, Mumbai- 400 012 Contact No. :- 022 24162700 Extn :- 204		Shri. N.V.Talape Executive Engineer F/South Ward, R. No.35, 2 nd floor, Brihanmumbai Mahanagar Palika, Jn. Of Dr. B. A. Road & Elphinston Road, Parel, Mumbai-400 012. Ph.022-24166093
2	Shri S. H. Asif	Asstt. Engineer (M & R) II	Electrol ward no. 195,196, 197& 198	Room No. 17 & 18, 2 nd floor, F/South ward office Building, Dr. B. A. Road, J. Bhatankar Marg, Parel naka, Parel, Mumbai- 400 012 Contact No. :- 022 24162700 Extn :- 205		Shri. N.V.Talape Executive Engineer F/South Ward, R. No.35, 2 nd floor, Brihanmumbai Mahanagar Palika, Jn. Of Dr. B. A. Road & Elphinston Road, Parel, Mumbai-400 012. Ph.022-24166093

Section 4 (1) (b) (xvi)

Details of public information officers / APIO's / appellate authority in the jurisdiction of (Public authority) in the office of Assistant Engineer (Maintenance & Repair)

APIOs

Sr. No.	Name of APIO	Name of APIO	Designation	Jurisdiction as APIO under RTI	Address / Ph no.
	N.A.				

Section 4 (1) (b) (xvi)

Details of public information officers / APIO's / appellate authority in the jurisdiction of (Public authority) in the office of Assistant Engineer (Maintenance & Repair)

Appellate Authority

Sr. No.	Name of Appellate Authority	Designation	Jurisdiction as Appellate authority	PIO Reporting	E mail id for purpose of RTI
1	Shri N.V.Talape	Ward Ex Engineer	F/South Ward	A.E.(Maintenance & Repair) F/South Ward	

Section 4 (1) (b) (xvii)

MAJOR ROADS IN F/SOUTH WARD

Sr. No.	Road Name- F/South Ward	Road Length (m)	Width of Road	No. Of Lanes	Total Lane Length (m)
1	Road No. 26	548	16.8	2	1096
2	MMG Sangrahalaya Marg	692	17.8	2	1384
3	G. D. Ambedkar (Katrak Marg)	844	16.7	4	3376
4	Dadasaheb Phalake Marg	825	18	2	1650
5	M.Pasta Marg	322	11.5	2	644
6	St. Gadge Majharaj Road	132	12.4	2	264
7	Dr. B. Ambedkar Road	1215	34.2	6	7290
8	M. Jyotiba Phule Road	651	14.8	2	1302
9	S. M. Jadhav Road	395	12.9	2	790
10	B. J. Devrukhkar Marg	526	15.2	2	1052
11	V.V. Dahivalkar Buva Road/Rd No. 5	763	11.6	2	1526
12	Govindji Keni Road	583	14.5	2	1166
13	St. Paul Street	256	11.7	2	512
14	V.L. Parulekar Marg	310	13.6	2	620
15	Road No.16	286	12.8	2	572
16	St, Xavier Street	660	11.8	2	1320
17	K Jadhav Marg	142	11.6	2	284
18	Maruti Anngare Marg	122	10.8	2	244
19	Buddha Mandir Lane	180	11.6	2	360
20	Road No. 6 Naigaon	190	12.83	2	380
21	Jagnnath Bhatankar Marg	375	25.9	4	1500
22	Jerbai Wadia Road	1525	19.2	4	6100
23	Rafi Ahemad Kidwai Marg	1200	43.7	8	9600
24	D G Mahajani Road	490	14.4	2	980

25	Rafi Ahemad Kidwai Marg	270	44	8	2160
26	Prabodhankar Thakare Marg	250	14	2	500
27		232	14	2	464
28	Tokershi Jivraj Marg	210	19	2	420
29	Sewree X Road	592	12	2	1184
30	Acharya Donde Marg	1665	24	4	6660
31	Sewree Station Road (Popatlal Oza Marg)	150	12	2	300
32	Sakharam Lanjekar Marg	647	18	2	1294
33	J. Merwanji Street	260	18	2	520
34	Dadbhai Chamarbaugwala Road	245	12	2	490
35	Aai Mai Merwanji Street	250	12	4	1000
36	Parmar Guruji Marg	454	12	2	908
37	Rugn Sewa Sadn Road	150	12	2	300
38	Dr. E. Borges Marg	823	15	2	1646
39	Dr. R. K. Shirodkar Marg	386	13	4	1544
40	Dr. V. K. Walimbe Road	400	13	2	800
41	St. Xavier Street	483	12	2	966
42	Nanabhai Laxman Parelkar Marg	364	14	2	728
43	Sriram Tekadi Road	421	13	2	842
44	Palturam Murai Road	347	24	4	1388
45	Dr. S.S. Rao Road	1000	29	4	4000
46	G. D. Ambedkar Marg	800	17	6	4800
47	Tokershi Jivraj Marg	255	19	2	510
48	Jeejibhoy Lane	204	34	4	816
49	Shri Saibaba Marg	670	26	4	2680
50	Barister Nath Pai marg	250	30	8	2000
51	Seweree Koliwada Road	225	20	2	450
52	Parel Tank Road	638	17	2	1376
53	Zakaria Bunder Road(Barister Nath Pai Marg)	1885	30	8	15080
54	Zakaria Bunder Road no. I	100	14	2	200

55	Zakaria Bunder Road no. II	100	15	2	200
56	Zakaria Bunder Road no. III	60	13	2	120
57	Tokershi Jivraj Marg	1155	19	2	2310
58	G. D. Ambedkar Marg	805	17	6	4830
59	Shrikant Hadkar Marg	440	15	2	880
60	Dr. B. Ambedkar Road	1025	34	6	6150
61	Sane Guruji Marg + Subhanrao Road	558	24	4	2232
62	Anant Malwankar Marg	140	12	2	280
63	Gas Compony Lane (Dattaram Khamkar Marg)	530	14	2	1060
64	Dr. S.S. Rao Road	325	29	4	1300
65	Ganesh Lane-2	435	12	2	870
66	Ganesh Lane	118	12	2	236
67	Abhyuday Nagar Road -I	580	14.4	2	1160
68	Abhyuday Nagar Road -II	260	11.1	2	520
69	Abhyuday Nagar Road -III	360	12.8	2	720
70	Abhyuday Nagar Road -IV	180	13.2	2	360
71	Abhyuday Nagar Road -V	360	13.7	2	720
72	Dr. B. Ambedkar Marg	915	34	6	5490
73	Mahadeo Palav Marg	558	23	2	1116
74	Vitthal Chavan Marg	325	14	2	650
75	Post Office Lane	134	12	2	268
76	Tejukaya Lane	95	13	2	190
	TOTAL	37316			131700

MINOR ROADS IN F/SOUTH WARD

Sr. No.	Road Name- F/South Ward	Road Length (m)	Width of Road	No. Of Lanes	Total Lane Length (m)
1	Gokhale Soc. Lane	257	5	2	514
2	Chamarbaug X Road I	151	6.1	2	302
3	Chamarbaug X Road II	63	8.1	2	126
4	Mahadeo Palav Marg L/L	350	7	2	700
5	Adam Mistry Path	115	4.3	2	230
6	Shankar Aabaji Palav Marg	120	9	2	240
7	Parel Bhoiwada Lane	285	7.5	2	570
8	Dr. Batliwala Marg	255	5.1	2	510
9	Dr. Batliwala X Marg	46	7.5	2	92
10	Ranjana Deshmukh Marg	100	6.25	2	200
11	Eknath Ghadi Marg	187	7.7	2	374
12	Mukund Anna Jadhav Marg	215	6.1	2	430
13	Road No. 39	530	7	2	1060
14	M.G.Vasahat Marg	180	8	2	360
15	Ganesh Galli Internal Road	680	6	2	1360
16	Rajkamal Lane	200	6	2	400
17	Ganesh Nagar Lane	250	6.8	2	500
18	Dinsha Petit Lane	624	6.3	2	1248
19	Gen Nagesh Marg	270	8.3	2	540
20	Kuber Galli	137	8.5	2	274
21	Bhagwantrao Paralkar Marg	200	6.1	2	400
22	Sacchidanand Marg	250	6.2	2	500
23	Ramtekadi X Road	340	7.7	2	680
24	Jijamata Nagar Internal Road	425	4.6	2	850
25	Golandaji Hill Reservoir	270	4.5	2	540

26	Datta Mandir Road	180	5.5	2	360
27	S.P. Murai X Road	156	6	2	312
28	Hrishi Byasdeo Nirankari Road	194	6	2	388
29	Chivada Galli	307	5.5	2	614
30	Meghwadi Road	140	7.2	2	280
31	Tawari pada Road	310	6.5	2	620
32	Seweree X Road	1000	7.85	2	2000
33	Seweree X Road No. 6	35	5.45	2	70
34	BIT Chawl passage no.1	65	7.55	2	130
35	BIT Chawl passage no.3	65	9.6	2	130
36	Rugn Seva Sadan Road	143	6.2	2	286
37	Shirodkar X Road	174	4.3	2	348
38	Parmar Guruji X Road I	100	6.15	2	200
39	Parmar Guruji X Road II	25	6.1	2	50
40	Mahadeo Palav Marg L/L	146	6.5	2	292
41	Jagannath Bhatankar Marg L/L	165	5.3	2	330
42	Jagannath Bhatankar Marg L/L	165	5	2	330
	TOTAL	9870			19740

Sr. No.	Name of the Garden	Location	Area	Res-ervation	CS No.	Beat No.
			(sq.m .)			
1	R. G. Dhakare Udyan	SM Jadhav marg CPI School Naigaon 14	1112	RG		195
2	Kesharbaug Garden	SM Jadhav marg Naigaon 14	887	RG		195
3	Sadakant Dhavan Udyan	Opp. Bhoiwada Police Station, B hoiwada, Naigaon 15	6067	RG	60	195
4	Bhavani mata Kridangan	Shindewadi, Dadar	5703	PG	43	195
5	PG at St. Xaviers High school	Bhoiwada, Naigaon 15	16000	PG	775	195
6	Manohar Mahidik (Morachi wadi)Garden	Morbaug MCPI colony, Naigaon 14	480	RG		196
7	RG plot at Morbaug Depot	G. D. Ambedkar marg Naigaon 14	2000	RG		196
8	Dr. B Ambedkar Udyan	Labour camp, Mahajani path Sewri Mum 15	612	G		197
9	Shantaram Zanj Udyan	Near R M Bhatt school, Opp K.E.M. Hosp. Parel	1703	RG	156B/74	198
10	Subhash Damare Udyan	Shirodkar market, Parel	1130	RG	90	198
11	Garden at Nare Park	Shirodkar High School Parel	1100	RG		198
12	Garden at Nare Park	Shirodkar High School Parel	8000	RG	88/72	198
13	Kamgar Maidan	Opp. KEM Hospital Parel	4317	RG	156/74	198
14	RG plot at Godrej Co.	Triveni bldg., Curry road 400012	9039	RG	68	198
15	Sadguru Bhalchandra Maharaj Kridangan	Anant Malvankar marg, Lalbaug 12	1407	PG	14	198
16	Nayan Krande Udyan	Shirodkar High School Parel	1975	PG	74	198
17	PG near Triveni Sadan	Triveni bldg., Curry road 400012	923	PG		198
18	RG plot at Bombay Gas Co.	Lalbaug 12	4500	RG		198
19	Balkrishna V. Chemburkar manoranjan maidan	Parel village A D marg Parel	820	RG	324&401	199
20	Ramakant Patil Udyan	Parel village A D marg Parel	228	RG	325/4	199

21	V. Shantaram Balo-dyan	S.S. Rao road,opp Gandhi hospital	1000	Amenity plot		199
22	Prabhodhan kar Thakare PG	Parel Village Parel	546	RG		199
23	Ganesh Gully Maidan	Lalbaug Mum 400012	1000	PG	226/74	199
24	Prataprao Ghogale Udyan	Parmar Guruji Marg Near ITC ltd.	3975	RG	215B/74 (pt)	199
25	Chatrapati Shivaji Maharaj Kridangan	Dr. B.A. road, Mum 400012	2110	PG	48	199
26	Pr. Vamanrao Mahadik Udyan	S.S. Rao road,opp Gandhi hospital	5709	RG	63/74	199
27	RG plot at Chiwada galli.	Lalbaug	3607.8	RG		199
28	RG plot at Parel Tank road, near Ishwati Prasad bldg.	G D Ambekar marg, Kalachowky.	966.29	RG	126(part)	199
29	R.G. plot at Dattaram Lad marg	Dattaram Lad Marg, Kalachowky	267.95	RG	2/126	199
30	Hutatma Rajguru Udyan	Abhyuday nagar kalachowky 33	1000	RG		200
31	Chandrashekhar Joshi Udyan	Abhyuday nagar kalachowky 33	1000	RG		200
32	Shahid Bhagat Singh Maidan	Abhyuday nagar kalachowky 33	8446	RG	006/48	200
33	RG plot at bldg no 13,14	Abhyuday nagar kalachowky 33	2000	RG		200
34	RG plot at Swan Mill Compound	T J Road Sewree	4526	RG		200
35	Bal Vikas Maidan	Ramtekadi path, Sewree	1525	RG		200
36	RG plot at T. J. road, Sewree	T. J. road, Sewree	1992	RG	163	200
37	Prabhodhan kar Thakare Udyan	A D marg Seweer Mum 33	450	RG	237	201
38	Prabhodhan kar Thakare Maidan	A D marg Seweer Mum 33	6000	RG	237	201
39	S.G. Patkar Maidan	A D marg Seweer Mum 33	2625	PG		201

LIST OF GARDENS RG/PG IN F/SOUTHWARD

GANAPATI IMMERSION DETAILS

YEAR -2013

Artificial Pond					Haji Bunder			
Day	Ganapati		Gauri	Total	Ganapati		Gauri	Total
	Domestic	Public			Domestic	Public		
10.09.2013	25	1	--	26	105	--	--	105
13.09.2013	81	--	6	87	345	01	44	390
15.09.2013	3	--	--	3	26	--	--	26
18.09.2013	43	6	--	49	63	5	--	68
Total	152	7	6	165	539	06	44	589