



**BRIHANMUMBAI MAHANAGARPALIKA**

Section 4 Manuals as per provision of RTI Act 2005 of E Ward

ADMINISTRATIVE OFFICER E WARD

**Address** — Assistant Commissioner E ward, Municipal Bldg  
1<sup>st</sup> Floor, Shaikh Hafizuddin Marg, Byculla, Mumbai - 400 008

Year 2019-20

## INDEX

<u>Sr. No.</u>	<u>Section 4 (1) B Sub Clauses</u>	<u>Name of Manual</u>	<u>Page No.</u>
1		INTRODUCTION	
2	4 (1) (b) (i)	The particulars of functions & duties of the Public Authority:-	
3	4 (1) (b) (ii)	The Powers of officers and employees in the office of A O B Ward	
4	4 (1) (b) (iii)	The procedure followed in the decision making process, including channels of supervision and accountability in the office of E ward.	
5	4 (1) (b) (iv)	Norms set for discharges of its functions in the office of E ward	
6	4 (1) (b) (v)	The rules/regulation related with the functions of E ward	
7	4 (1) (b) (vi)	Statement of categories of documents held in the office of E ward Nr. J.J. Hospital	
8	4 (1) (b) (vii)	Particulars of any arrangement that exists for consultation with the members of public in relation to the formulation of policy and implementation in the office	
9	4 (1) (b) (viii)	Statement of Boards, Councils, Committees of other bodies E ward.	

10	4 (1) (b) (IX)	Directory of the officers and employees AO Estate of E Ward	
11	4 (1) (b) (x)	Details of remuneration of officers and employees in the office of AO E ward	
12	4 (1) (b) (xi)	Details of allocation of budget and disbursement made in the office of E Ward Nr. J.J. Hospital for the year 2014-2015	
13	4 (1) (b) (xii)	Details of beneficiaries of subsidy program in the office of B Ward Nr. J.J. Hospital for the year 2014-2015	
14	4 (1) (b) (xiii)	Particulars of recipients of concessions, permits or authorizations granted in the office of E Ward Nr. J.J. Hospital for the year 2014-2015	
15	4 (1) (b) (xiv)	Details of information available in electronic form in the office of E Ward.	
16	4 (1) (b) (xv)	Particulars of facilities available for citizen for obtaining information in the office of E ward	
17	4 (1) (b) (xvi)	Details of Public information officer/APIOs/Appellate authority in the jurisdiction of (public authority)	
18	4 (1) (b) (xvii)	Appellate authority	

## INTRODUCTION

### **ADMINISTRATIVE OFFICER E WARD**

In M.C.G.M. ADMINISTRATIVE OFFICER E WARD Department is Independent Department and Assistant Commissioner E Ward is Head of this Department. All the Establishment matter of E Ward belong to M.C.G.M. comes under the Jurisdiction of Assistant Commissioner E Ward . All establishment matter except SWM establishment are being looked after by Administrative Officer in the Ward.

Administrative Officers E Ward in the wards working under the control of Assistant Commissioner of the concerned ward for Administrative Work and Policy matters in the context of Right for Information Act and they (A.O.-Establishment) work as per the direction of Assistant Commissioner E Ward.

There are Indoor staff such as Head Clerk, Clerks, Peon etc. Is looking after the office work of Establishment Department under control of Administrative Officer E ward.

The service record of working employees of E ward (Superior and Labour) establishment are maintained and protected by A.O. E Ward. Head Clerk, Clerk, Peon the Indoor Staff working under Administrative officer B Ward. Administrative Officer E Ward has to keep control over the daily work of the above staff. He has to guide regarding all establishment matters. The proposal for transfer employees, P.T. Case,

Pension claim, PF matters, Arrears, Leave details, LTA encashment and Court cases of the Municipal employees and submit report to superiors and submit necessary information to concerned Assistant Commissioner and D.M.C and higher authority as per Municipal Service Rules.

Administrative Officer Establishment

## **ADMINISTRATIVE OFFICER E WARD.**

Administrative Officer is important post in the office of Assistant Commissioner E ward

Administrative officer is the head of internal clerical staff and he is responsible for administrative works to the Assistant commissioner . Under the administrative officer the following department is worked.

- 1) Establishment (Superior )
- 2) Establishment (Labour)
- 3) Expenditure
- 4) Revenue
- 5) Dispatch

### **Qualifications and appointment :-**

Administrative officer is appointed from head clerk who is completed his minimum seven years tenure as a head clerk. The merits and seniority is considered for the appointment.

The Administrative work of A.O. is done through A) Establishment (Superior)

B) Establishment (Labour) C) Expenditure D) Revenue E) Dispatch With the help of head clerk and clerks and establishment under the supervision and guidance of Assistant commissioner

## **Work Procedure :-**

### **A) Establishment section :-**

In the Establishment section the salaries of officers, employees, and labours is charged every months. The administrative work in progress as per provision of Mumbai Municipal Corporation Act1888, Municipal service rules1989, provident fund rules1924, pension rules and as per provision of industrial dispute act 1948, minimum wages act, employee's compensation act and gratuity act 1978. The main works of establishment section are as follows:-

Establishment Schedule: - To prepared necessary yearly establishment schedule by taking in to the account increase and decrease of different post and make necessary budget provision for the year on the account of expenditure for wages and allowances.

- 1) To maintain attendance of staff (Muster)
- 2) To scrutiny of leave applications for certifications and sanctions
- 3) To get the approval for yearly increments
- 4) Monthly Wages Pay sheets – As per the establishment date provided by the establishment clerk within specific time period the required monthly pay sheets of the respective staff Section wise / Pay sheet code wise prepared on Computer (by taking into account of time to time leave, transfer, promotion and reservation) by Master creating forms.
- 5) employee is getting his monthly payment through his respective bank account After receipt of monthly pay sheets from Computer Department before allowing actual payment those pay sheets are sent to respective Account Office along with effective reports where in instruction for withholding or allowing payment to the respective employee are given. Accordingly, respective.
- 6) The monthly pay bills of Suspended employees, part time employees & khada badalee employees are being prepared manually by the Establishment Staff of Ward.
- 7) Preparing monthly effective report of the staff on duty, by taking note of their transfer, removal, reversion or promotion etc.
- 8) On proper sanction to prepare pay sheets for Advance Leave Salary, Encashment of Leave, Leave Travel Assistant etc.
- 9) Making correspondence in case of enquiry of the respective staff as per guidance of the Administration / Sectional head or Enquiry Officer as the case may be.
- 10) To maintain service record of the respective staff and get the same audited as and when required.
- 11) To work out claim under Workman Compensation Act as and when required.
- 12) To make correspondence with Labourer Officer whenever required.
- 13) To prepare overtime wages bills whenever applicable.

14) To prepare final claims of the employee such as Superannuation Pension Claim, Voluntary Retirement Claim, Provident Fund Claim to get necessary payment to the ex employee as early as possible.

The work of pay fixation is done time to time as per pay fixation agreement and arrears from such fixation is given to the employees.

### **B) Expenditure Section**

The main work of this section is to certify the bills and pay the amount. The procedure is as follows –

- 1) To make provision in the Budget Estimate. This provision is recurring and non-recurring both.
- 2) To make liability for the indent for purchase of proposed works.
- 3) To submit indent and give work order.
- 4) To certify bills, abstract.
- 5) To maintain record of departmental work. To make abstract of expenditure of labour, material and supervision.
- 6) To prepare proposal for supplementing fund.
- 7) To work in consultation with Asstt. Engineer (Maintenance) and Asstt. Accountant about departmental work and P.W.C. Work.
- 8) Table of expenditure of liability register.
- 9) To keep balance sheet of last years expenditure and current year recurring expenditure of telephone and electricity, so that the double payment will be avoided.

### **C) Revenue Section**

This section does the works of collecting revenue by giving the receipt of rent, license, factory permit, Birth & Death Certificate fees etc.

This section gives the permits and license as follows.

- 1) Trade license of License & MOH Deptt. under section 394 of M.M.C.Act.
- 2) Stall boards, Rolling shutter, Weather frame License of License & MOH Deptt. under section 313 of M.M.C.Act.
- 3) Stall, pitches, cobbler handcar license of license and MOH Deptt. under section 313-A of M.M.C.Act.
- 4) Advertisement permit of license and MOH Deptt. under section 328 of M.M.C.Act.

Index Register and Demand Register is maintained for the above.

The licenses, permits are renewed in this department.

- 5) M.P.F.A. ( Maharashtra Preventive Food Adulteration) license of Maharashtra State and milk license under section 412 of M.M.C.Act.

- 6) Prepare permission letter for construction of temporary mandap for Ganesh Festival, Navaratri and other religious activities.
- 7) Register of Deposit.

**D) Dispatch :-**

To give facilities to the tax payers the dispatch section is working in C.F.C.( Citizen Facility Centre ) & it's working is as detail given below :-

- 1) To accept the letters from the citizens directly or by post as well as to accept the papers from the other offices of the Corporation. The important papers, letters to be distributed departmentally within one day. To send the papers with the printouts to the different departments after taking note on the Computer.
- 2) To send the letters of the different department by post & to maintained postage register & the account of postage stamp for the same.
- 3) Arranging the meetings for the action of the pending Audit notes.

**Section 4 (1) (b) (I)**

The particulars of functions & duties of the Public Authority

1	Name of the Section	Office of Administrative Officer E Ward Establishment
2	Address	Assistant Commissioner E ward, Shaikh Hafizuddin marg, Byculla-W , Mumbai No. 400008.
3	Head of the Office	Administrative Officer E Ward
4	Parent Govt. Dept.	MCGM Mumbai
5	Office Timings	Monday to Saturday 10.30 a.m. to 5.30 p.m. 2 <sup>nd</sup> & 4 <sup>th</sup> Saturday Holiday
6	Reporting to which office	Assistant Commissioner E Ward



7	Contact Details	Phone No. 23081471 Ext.123 / 122
9	Vision	Provide services related to establishment matters to the employees working under them promptly.
10	Objectives	E- Office and SAP Module are use for providing services to employees
11	Functions	<ol style="list-style-type: none"> <li>1) Updation of service records of employees</li> <li>2) Input and Output of salaries</li> <li>3) Preparing PF and Pension of retired employees.</li> <li>4) Preparing LTA, encashment SPS.</li> <li>5) And other pay sheet related work.</li> </ol>
12	Details of Services provided (In Brief)	<ol style="list-style-type: none"> <li>1) Providing pensionary benefits to the employees working under them in time.</li> <li>2) Calculation of Arrears, Bonus, LTA, Education allowance, Time Bound Promotion, Promotion cases of lower cadre employees working under this establishment</li> <li>3) Giving information under RTI Act 2005</li> </ol>

13	Physical Assets	<p>1) <b>Establishment Superior :-</b> 08 Tables,08 Chairs, Iron cupboard 6, Wooden cupboard 2, , Fan 4, Tubes lights:-5 Computer 04, printer1,wall feeding cupboard 04</p> <p>2) <b>Establishment Labour:-</b> 18 Tables,18 Chairs, Iron cupboard 4, wall feeding cupboard, Fan 5, Tubes lights:-6 Computer 08, printer 2,wall feeding cupboard 08,</p> <p>3) <b>Revenue:-</b> 08 Tables,8 Chairs, Godrej cupboard 2, ,wall feeding cupboard 02, Fan3, Table fan 1,Tubes lights:- 9 Computer 03, printer2</p> <p>4) <b>Expenditure:-</b> 05 Tables, 13 , Chairs, 18 , Iron cupboard 03 , wall feeding cupboard 0, Ceiling Fan5,wall fan 02 , computer 08, printer 02 , rack 04, iron stool 02 , safe 01 Computer 02, printer2 Tubelight:-09,</p> <p>5) <b>Dispatch:-</b> 08 Tables,8 Chairs, Godrej cupboard 1, Wooden cupboard 2, Fan2, AC 2,</p>
14	Organisations's structural Chart (Orogonogram) at each level	List attached
15	Give linkage of jurisdiction & Address, Tel No. s & Office Timings	<p>Administrative Officer E Ward Phone No. 23081474,Ext-- 123</p> <p>Monday to Saturday 10.30 a.m. to 5.30 p.m. 2<sup>nd</sup> &amp; 4<sup>th</sup> Saturdays Holiday</p>
16	Weekly Holidays	Sunday and Public Holidays.

**Section 4(1) (b) (ii)**  
**The Powers of officers and employees in the office of A O Establishment E Ward**

**A**

<b>Sr. No.</b>	<b>Designation</b>	<b>Powers-Financial</b>	<b>Under which legislation /rules/orders/GRs</b>	<b>Remarks</b>
1	AO Establishment	Rs. 500/-	-	Misc. Expenditure
2	Head Clerk	Nil	-	-
3	Clerk	Nil	-	-
5	Peon	Nil	-	-

**B**

<b>Sr. No.</b>	<b>Designation</b>	<b>Powers-Administrative</b>	<b>Under which legislation /rules/orders/GRs</b>	<b>Remarks</b>
1	AO Establishment	Nil	-	-
2	Head Clerk	Nil	-	-
3	Clerk	Nil	-	-
5	Peon	Nil	-	-

## C

<b>Sr. No.</b>	<b>Designation</b>	<b>Powers-Magisterial</b>	<b>Under which legislation /rules/orders/GRs</b>	<b>Remarks</b>
1	AO Establishment	Nil	-	-
2	Head Clerk	Nil	-	-
3	Clerk	Nil	-	-
5	Peon	Nil	-	-

## D

<b>Sr. No.</b>	<b>Designation</b>	<b>Powers- Quasi judicial</b>	<b>Under which legislation /rules/orders/GRs</b>	<b>Remarks</b>
1	AO Establishment	1. Enquiry 2. Public Information Officer	-	-
2	Head Clerk	Nil	-	-
3	Clerk	Nil	-	-
5	Peon	Nil	-	-

## E

<b>Sr. No.</b>	<b>Designation</b>	<b>Powers- Judicial</b>	<b>Under which legislation /rules/orders/GRs</b>	<b>Remarks</b>
1	AO Establishment	Nil	-	-
2	Head Clerk	Nil	-	-
3	Clerk	Nil	-	-
5	Peon	Nil	-	-

**Section 4(1) (b) (ii)**

**The Duties of officers and employees in the office of AO (Establishment) E Ward**

**A**

<b>S. No.</b>	<b>Designation</b>	<b>Duties-Financial</b>	<b>Under which legislation / rules / orders /GRs</b>	<b>Remarks</b>
1	AO Establishment	Nil	-	-
2	Head Clerk	Nil	-	-
3	Clerk	Nil	-	-
4	Peon	Nil	-	-

## B

### **Administrative Powers**

#### **Administrative Officer (Establishment)**

Administrative Officer (Establishment) of the ward is assisted by Assistant Commissioner E ward, Head Clerk are assisted by Administrative officer establishment, Clerk of the department to execute daily work. Administrative Officer (Establishment) of the Ward executes following duties/works from his staff working under his control:-

1. All over supervision on indoor staff in the ward office.
2. To check musters/attendance of all the staff in the ward.
3. To follow up the matters received form M.C./A.M.C./D.M.C./C.E./Central Control Room through dispatch section.
4. To assist the public in absence of asstt. commissioner/complaint officer.
5. To put up proposals/reply which are specifically directed to asstt commissioner
6. to call reports in case of reminders from concerned departments.
7. To issue circulars as directed by asstt commissioner in case of general policy matters.
8. To supervise the disposal of M.C. Audit notes and get its disposal from head of the department.
9. To maintain outstanding resolution register of various committees/ corporation and to dispose off the same.
10. To attend union representatives and to redress the complaints from them.
11. To send replies to union references.
12. To make necessary arrangements for the staff of Vigilance Branch/M.C.A.
13. To attend zonal D.M.C.'s meeting regarding promotion and P.T. Cases etc.
14. To attend the meeting arranged by asstt commissioner/M.C.A. For administrative purpose.
15. To maintain the separate register for the application received under right of information act 2005, to follow up the said references.
16. To receive telephone messages form H.O., M.C./DMC offices and take necessary action accordingly.
17. Work related to swachata abhiyan and reporting to head office of DMC GA and central government office(Online submission)
18. Working on E-Office of daily inward papers.

**Head Clerk**

- 1) To supervise the work of clerks
- 2) To keep control monitor and guide to the clerk,
- 3) To scrutinize monthly and annual report of recovery of payment.
- 4) Dispose of daily outward
- 5) Inward papers and to comply of Audit Notes & Follow up
- 6) Inspect and submit Budgetary Report
- 7) Furnish information to clerk and to guide clerk in establishment matters.
- 8) Submit report as per instructions from Superiors.
- 9) To assist AO establishment as PIO in RTI Act 2005 to submit required information related to establishment.
- 10) To assist AO Establishment and superiors in inquiry matters related to establishment.
- 11) Reporting of Schedule and non Schedule post to Head office of MCGM
- 12) Maintenance of Monthly attendance muster.
- 13) Answer to the complaints make by employees.
- 14) To look out for audit note and furnish requirement
- 15) Work related to swachata abhiyan
- 16) Reporting of vacant post to Head office of MCGM.
- 17) Working on E-Office of daily inward papers.

**Clerk**

- 1) Clerk are directly working under Head Clerk.
- 2) Do the input and output and pay sheet related work.
- 3) To take leave entries in leave register and service record and update it
- 4) Update leave details and recovery in effective register



- 5) To furnish information to Head clerk and superior as required.
- 6) Prepared Pension claim and P.F. Claim/ balance leave encashment of retired employees.
- 7) Proposals of P.T. Case and Vacant post.
- 8) To Submit various monthly and annual report related to establishment.
- 9) Proposals of education allowance to municipal employees.
- 10) Prepare pay fixation as per circulars
- 11) Prepare increment certificate of employees.
- 12) Preparation of yearly budget provision for pay sheet
- 13) Preparation of delegation of power files for superior employees.
- 14) Maintain of CS Sheets off every financial years of employees
- 15) Make PDF file of property form and display it on MCGM portal of superior employees.
- 16) Proposed and sanction PF papers related to employee
- 17) Deemed confirmation of employees having minimum 3 years completed in service.
- 18) Taking sanction of employees to continue service after 55 years.
- 19) Proposed inquiry of unauthorized/ absent of employees.
- 20) Calculation of income tax of every financial years.
- 21) Papers regarding promotion of employees and recruitment.
- 22) Calculation of Overtime amount sanction document for water department employees
- 23) Establishment proposals such as new position( Position number) and schedule post
- 24) Issuing to I Card to newly appointed/ transferred / promotional employees.
- 25) Maintenance of record of Casual leave application received from employees
- 26) Maintenance of Papers related to dismiss of employees and fine to them
- 27) Other related matters letters given to employees

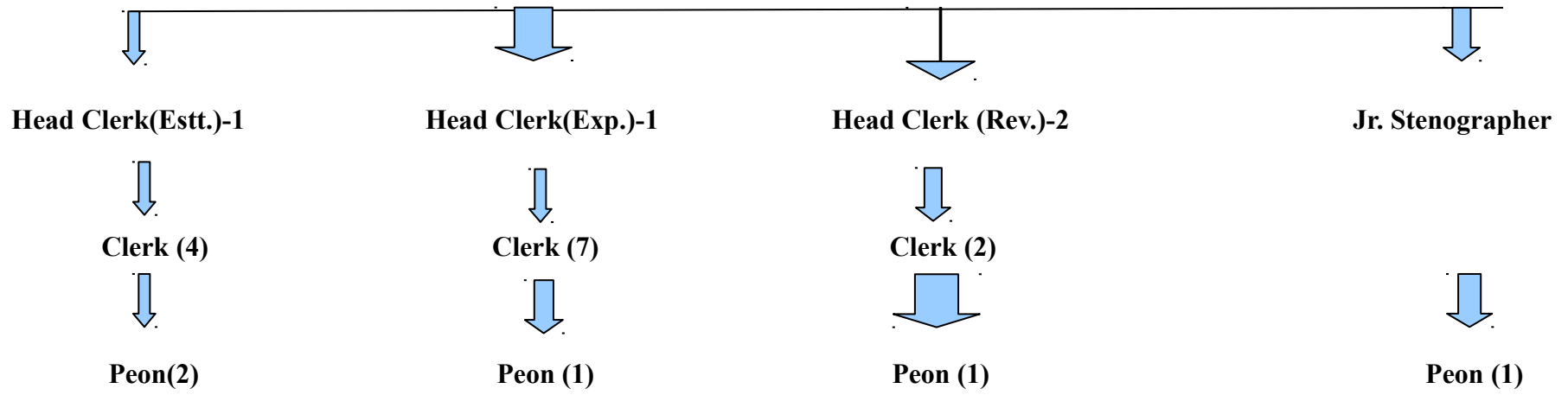
- 28) Maintain Details of Seniority List of employee
- 29) Maintain of Duty List of all categories of employees.
- 30) Proposal of Papers related to security deposit.
- 31) Furnish information of Court Case papers of employees of MCGM
- 32) Important document such as joining application of employees and create master creation form.
- 33) Make entries in Daily inward and outward work sheet register
- 34) Prepare arrears sheet as per circular and program per employees.
- 35) To look out for audit note and furnish requirement of dues.
- 36) Monthly rent deduction in salary to quarters allotted to municipal employees.
- 37) Preparation of SPS related to LTA encashment of employee.
- 38) Maintain of all types of register and computer program.
- 39) Maintain SAP information of employees related to leave details and other detail.
- 40) Work related to swachata abhiyan
- 41) Working on E-Office of daily inward papers.

**Officer, (Establishment) E Ward**

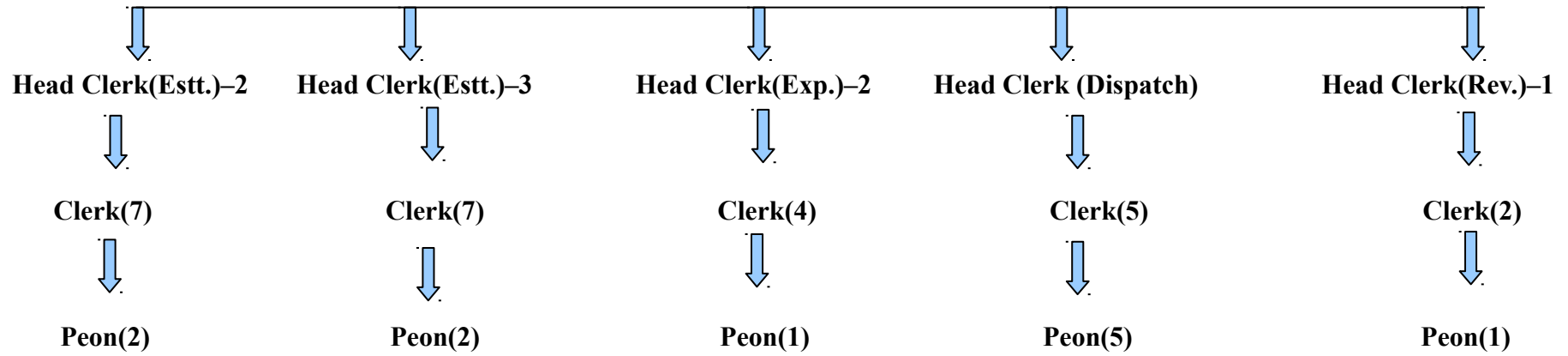
<b>Sr. No.</b>	<b>Post</b>	<b>Scheduled Post</b>	<b>Occupied</b>	<b>Vacant</b>
1	Administrative Officer	2	2	0
2	Head Clerk	9	8	1
3	Clerk	62	52	10
4	Peon	25	22	3
5	<b>Jr. Stenographer</b>	1	1	0

<b>Sr. No.</b>	<b>Post</b>	<b>Scheduled Post</b>	<b>Occupied</b>	<b>Vacant</b>
<b>1</b>	<b>Administrative Officer</b>	<b>2</b>	<b>2</b>	<b>0</b>
<b>2</b>	<b>Head Clerk</b>	<b>3</b>	<b>3</b>	<b>0</b>
<b>3</b>	<b>Clerk</b>	<b>22</b>	<b>16</b>	<b>6</b>
<b>4</b>	<b>Peon</b>	<b>16</b>	<b>15</b>	<b>1</b>
<b>5</b>	<b>Jr. Stenographer</b>	<b>1</b>	<b>1</b>	<b>0</b>

Administrative Officer - 1



**Administrative Officer – 2**



**C**

<b>S. No.</b>	<b>Designation</b>	<b>Duties-Magisterial</b>	<b>Under which legislation /rules / orders/GRs</b>	<b>Remarks</b>
1	AO Establishment	Nil	-	-
2	Head Clerk	Nil	-	-
3	Clerk	Nil	-	-
4	Peon	Nil	-	-

**D**

<b>S No.</b>	<b>Designation</b>	<b>Duties-Quasi judicial</b>	<b>Under which legislation /rules/ orders /GRs</b>	<b>Remarks</b>
1	AO Establishment	Nil	-	-
2	Head Clerk	Nil	-	-
3	Clerk	Nil	-	-
4	Peon	Nil	-	-

**E**

<b>S. No.</b>	<b>Designation</b>	<b>Duties- Judicial</b>	<b>Under which legislation /rules /orders/GRs</b>	<b>Remarks</b>
1	AO Establishment	Nil	-	-
2	Head Clerk	Nil	-	-
3	Clerk	Nil	-	-
4	Peon	Nil	-	-

**Section 4(1) (b) (iii)**

The procedure followed in the decision making process, including channels of supervision and accountability in the office of B ward.

Name of activity – **Disposes of RTI**

Related Provisions –

Name of the Act/Acts – Nil ()

Rules –

Govt. Resolutions -

Circulars -

Office Orders

Sr. No.	Activity	Steps involved	Time limit	Authority role and responsibility of the employee/officer in connection with each activity. (mention designation)	Remark
1	<b>Disposes of RTI</b>	a. Application received in dispatch section. b. Application received in Establishment department. c. Scrutinize by concern clerk and head clerk d. Available information provided to concern applicant.	1 day 1 day 5 day within 30 days	a. Ward Head Clerk dispatch b. Ward Head Clerk Establishment c. Head Clerk and Clerk d. Administrative officer Establishment	-



Name of activity – **Maintenance of daily Musters.**

Related Provisions –

Name of the Act/Acts – Nil

Rules –

Govt. Resolutions -

Circulars -

Office Orders

<b>Sr. No.</b>	<b>Activity</b>	<b>Steps involved</b>	<b>Time limit</b>	<b>Authority role and responsibility of the employee/officer in connection with each activity. (mention desg)</b>	<b>Remark</b>
<b>1</b>	<b>Maintenance of daily Musters.</b>	a. Updating muster monthly b. Carry forward of CL of the employees in next month. d. Including name of newly appointed employee. e. Make entries of leave details of employees. f. Marking of musters such as late mark, half day, full day absent etc.	1 day 1 day 1 day 1 day Daily	a. Head clerk establishment b. Establishment clerk c. Establishment clerk d. Ward Head Clerk Establishment	-

Name of activity – **LTA SPS**

Related Provisions –

Name of the Act/Acts – Nil

Rules –

Govt. Resolutions -

Circulars -

Office Orders

<b>Sr. No.</b>	<b>Activity</b>	<b>Steps involved</b>	<b>Time limit</b>	<b>Authority role and responsibility of the employee/officer in connection with each activity. (mention designation)</b>	<b>Remark</b>
<b>1</b>	<b>LTA SPS</b>	a. Leave Application received in dispatch section. b. Application received in Establishment department. c. Scrutinize by concern clerk and hc d. Preparation and Calculation of leave and get it sanction from appropriate authority. e. Make entry in Service Record. f. Preparation of SPS and send to concern account department for payment.	1 day 1 day 1 day 1 day 1 day 2 day	a. Head clerk dispatch b. Establishment Head clerk c. Establishment clerk and head clerk d. Establishment Clerk e. Establishment clerk f. Establishment clerk and account clerk	-

Name of activity – **Input of salary and output of salary**

Related Provisions –

Name of the Act/Acts – Nil

Rules –

Govt. Resolutions -

Circulars -

Office Orders

<b>Sr. No.</b>	<b>Activity</b>	<b>Steps involved</b>	<b>Time limit</b>	<b>Authority role and responsibility of the employee/officer in connection with each activity. (mention designation)</b>	<b>Remark</b>
<b>1</b>	<b>Input of salary and output of salary</b>	a. Make entries in input register such as LTA in cashment, leave details, deduction, Income Tax, Educational, recovery if any and other allowances of various categories of employees. b. Make entries of above data in input programme of monthly salary every month. c. Get output from head office. d. Preparation of output and submit to concern account department for verification.	1 day  before input date  1 day  3 day	a. Establishment clerk  b. Establishment clerk  c. Establishment clerk  d. Establishment clerk	-

Name of activity – **Leave calculation**

Related Provisions –

Name of the Act/Acts – Nil

Rules –

Govt. Resolutions -

Circulars -

Office Orders

<b>Sr. No.</b>	<b>Activity</b>	<b>Steps involved</b>	<b>Time limit</b>	<b>Authority role and responsibility of the employee/officer in connection with each activity. (mention designation)</b>	<b>Remark</b>
<b>1</b>	<b>Leave calculation</b>	a. Leave Appln received in dispatch sec b. Application received in Establishment department. c. Scrutinize by concern clerk and HC d. Preparation and Calculation of leave and get it sanction from appropriate authority. e. Make entry in S R, effective register and input register. f. Make entries in input program of salary.	1 day 1 day 2 day 5 day same day before input date	a. Ward Head Clerk dispatch b. Ward Head Clerk Establishment c. Establishment clerk d. Establishment clerk e. Establishment clerk	-

Name of activity – Preparation of **Pay fixation**

Related Provisions –

Name of the Act/Acts – Nil ()

Rules –

Govt. Resolutions -

Circulars -

Office Orders

<b>Sr. No.</b>	<b>Activity</b>	<b>Steps involved</b>	<b>Time limit</b>	<b>Authority role and responsibility of the employee/officer in connection with each activity. (mention designation)</b>	<b>Remark</b>
<b>1</b>	<b>Preparation of Pay fixation</b>	a. Preparation and Calculation of pay fixation as per circular. b. Make entry in Service Record and send it to account department for verification. c. after verification make entries of pay and basic in input program of salary.	1 day 1 day 1 day before input	a. Establishment Clerk b. Establishment clerk and account clerk c. Establishment clerk	-

Name of activity – **Audit Note closing**

Related Provisions –

Name of the Act/Acts – Nil ()

Rules –

Govt. Resolutions -

Circulars -

Office Orders

<b>Sr. No.</b>	<b>Activity</b>	<b>Steps involved</b>	<b>Time limit</b>	<b>Authority role and responsibility of the employee/officer in connection with each activity. (mention designation)</b>	<b>Remark</b>
<b>1</b>	<b>Audit Note closing</b>	a. Make entries of amount of audit note in input program of concern employees. b. After recovery send report to audit note office for disclose. c. After remarks of that office make audit note close.	1 day 1 day 1 day before input	a. Establishment Clerk  b. Establishment clerk and account clerk  c. Establishment clerk	-

Name of activity – **Reporting of vacant post**

Related Provisions – MSR

Name of the Act/Acts –

Rules –

Govt. Resolutions -

Circulars -

Office Orders

<b>Sr. No.</b>	<b>Activity</b>	<b>Steps involved</b>	<b>Time limit</b>	<b>Authority role and responsibility of the employee/officer in connection with each activity. (mention designation)</b>	<b>Remark</b>
<b>1</b>	<b>Reporting of vacant post</b>	a. Review of vacant post as per pay sheet by head clerk. b. Report to head office for vacant post. c. Preparation of quarterly report of vacant post.	1 day 1 day 5 day	a. Establishment Head Clerk b. Establishment clerk and Head clerk c. Establishment clerk	

Name of activity – **SAP information**

Related Provisions – MSR

Name of the Act/Acts –

Rules –

Govt. Resolutions -

Circulars -

Office Orders

<b>Sr. No.</b>	<b>Activity</b>	<b>Steps involved</b>	<b>Time limit</b>	<b>Authority role and responsibility of the employee/officer in connection with each activity. (mention designation)</b>	<b>Remark</b>
<b>1</b>	<b>SAP information</b>	a. Make entries of employees information such as name, date of joining, birth date in program. b. Enter latest leave details of employees as per application of employee.	1 day  1 day	a. Establishment Head Clerk  b. Establishment clerk and Head clerk	-



Name of activity – **E office work**

Related Provisions – MSR

Name of the Act/Acts –

Rules –

Govt. Resolutions -

Circulars -

Office Orders

<b>Sr. No.</b>	<b>Activity</b>	<b>Steps involved</b>	<b>Time limit</b>	<b>Authority role and responsibility of the employee/officer in connection with each activity. (mention designation)</b>	<b>Remark</b>
<b>1</b>	<b>E- Office work</b>	a. All types of papers received in dispatch section. b. papers received in Establishment department. c. Distribution of paper by concern head clerk to clerk.	1 day  1 day	a. Establishment Head Clerk  b. Establishment clerk and Head clerk	-

Name of activity – **Preparation of PF and Pension claim of retired employee.**

Related Provisions – MSR

Name of the Act/Acts –

Rules – Pension Rule 1953/ P.F. Rule 1924

Govt. Resolutions -

Circulars - **Section 4(1)(b)(v)**

Office Orders

Sr. No.	Activity	Steps involved	Time limit	Authority role and responsibility of the employee/officer in connection with each activity. (mention designation)	Remark
1	<b>Preparation of PF and Pension claim of retired employee.</b>	a. Before 3 month notice issue to retired employee. b. Sending letter to bank if any dues and letter to inquiry department for any pending inquiry. c. Preparation of document regarding PF and pension claim. d. Sending both claim to account department for leave verification and any recovery e. After audit of both claim send to Head office of MCGM. f. After sanction of claim keep it with record.	1 day 1 day 5 day	a. Establishment Clerk b. Establishment clerk c. Establishment clerk d. Account department clerk e. Pension department concern clerk. f. Establishment clerk.	-

Name of activity – Proposal of P.T. case

Related Provisions – MSR

Name of the Act/Acts –

Rules –

Govt. Resolutions -

- Circulars -
- 1) LO /19 dtd.18.12.1998
  - 2) LO /16 dtd. 22.03.2007
  - 3) LO /78 dtd.21.12.2011
  - 4) LO /04 dtd.25.10.2007
  - 5) LO /21 dtd.24.12.2008
  - 6) LO /14 dtd.13.10.2008
  - 7) LO /22 dtd.29.10.1990

Office Orders

Sr. No.	Activity	Steps involved	Time limit	Authority role and responsibility of the employee/officer in connection with each activity. (mention designation)	Remark
1	Proposal of P.T. case	a. Application received in establishment department b. preparation of P.T. case file. c. Send letter to school of applicant for verification of qualification details. d. Get approval of ward officer send it to Labour officer. e. After sanction of Labour officer send to DMC Z-I for further sanction f. Sanction after DMC Z- I send to Labour officer for order of appointed. g. Full sanction file kept with ex- employee service record.	1 day  1 day	a. Establishment Clerk b. Establishment clerk c. Establishment clerk d. Ward Officer B ward/ Labour officer e. DMC Z-I concerned officer. f. Concern Labour officer. g. Establishment clerk	-

Name of activity – **Educational allowance.**

Related Provisions –

Name of the Act/Acts – Nil ()

Rules –

Govt. Resolutions -

Circulars -

Office Orders

<b>Sr. No.</b>	<b>Activity</b>	<b>Steps involved</b>	<b>Time limit</b>	<b>Authority role and responsibility of the employee/officer in connection with each activity. (mention designation)</b>	<b>Remark</b>
<b>1</b>	<b>Educational allowance.</b>	a. Application received from employee	1 day	a. Establishment Clerk	-
		b. Preparation of file.	2 day	b. Establishment clerk	
		c. Take sanction of head of department and ward officer.	1 day	c. Establishment clerk	
		d. Sending to account department for audit.	1 day	d. Accountant department clerk	
		e. After audit make entries in input program for payment of amount.	1 day	e. establishment clerk	

Name of activity – Preparation **financial year Budget**

Related Provisions –

Name of the Act/Acts – Nil ()

Rules –

Govt. Resolutions -

Circulars -

Office Orders

<b>Sr. No.</b>	<b>Activity</b>	<b>Steps involved</b>	<b>Time limit</b>	<b>Authority role and responsibility of the employee/officer in connection with each activity. (mention designation)</b>	<b>Remark</b>
<b>1</b>	Preparation <b>financial year Budget</b>	a. Get soft copy of budget program form head office of MCGM. b. Make entries in this program as per labour and superior employees function wise. c. Get verified from head office and submit in hard and soft copy.	1 day 10 day 1 day	a. Head office Clerk b. Establishment clerk c. Establishment clerk / Head office clerk.	-

Name of activity – Preparation of **delegation of power files**.

Related Provisions –

Name of the Act/Acts – Nil ()

Rules –

Govt. Resolutions -

Circulars -

Office Orders

<b>Sr. No.</b>	<b>Activity</b>	<b>Steps involved</b>	<b>Time limit</b>	<b>Authority role and responsibility of the employee/officer in connection with each activity. (mention designation)</b>	<b>Remark</b>
<b>1</b>	<b>Preparation of delegation of power files.</b>	a. Prepared delegation of files. b. Get approval of ward officer and send it to law officer. c. After sanction of law officer send file to Municipal commissioner/DMC Z-I for sanction. d. After received in ward give one copy to employee and kept office copy in o/c file.	1 day 1 day 6 day 1 day	a. Establishment Clerk b. Ward officer B ward. c. Law officer, Municipal commissioner, DMC Z-I d. Establishment clerk	-

Name of activity – **CS Sheets**

Related Provisions –

Name of the Act/Acts – Nil ()

Rules –

Govt. Resolutions -

Circulars - 1) CE / 6405 DT. 19.06.2013

2) MPS / 5413 DT.13.05.2013

3) MPM-2 / 361 DT. 30.09.2013

Office Orders

<b>Sr. No.</b>	<b>Activity</b>	<b>Steps involved</b>	<b>Time limit</b>	<b>Authority role and responsibility of the employee/officer in connection with each activity. (mention designation)</b>	<b>Remark</b>
<b>1</b>	CS Sheet	a. Distribute the blank CS sheet to employee. b. Collect filled CS sheet with head of the department remark. c. Display the property form in pdf format on MCGM website c. File the CS sheet to service record.	1 day 5 day 1 day 1 day	a. Establishment Clerk b. Establishment Clerk c. Establishment Clerk d. Establishment Clerk	-

Name of activity – **Deemed confirmation of employee**

Related Provisions –

Name of the Act/Acts – Nil ()

Rules –

Govt. Resolutions -

Circulars -

Office Orders

<b>Sr. No.</b>	<b>Activity</b>	<b>Steps involved</b>	<b>Time limit</b>	<b>Authority role and responsibility of the employee/officer in connection with each activity. (mention designation)</b>	<b>Remark</b>
<b>1</b>	<b>Deemed confirmation of employee</b>	a. Check the 3 years of continuous of service in MCGM of employee. b. Propose the file for deemed confirmation with head of department and take approved by ward officer. c. Send all the proposal to employee related central unit for sanction.	day 5 day 1 day	a. Establishment Clerk  b. Establishment Clerk/ Admin off./ ward officer.  c. Establishment Clerk	-



Name of activity – **55 years continuation**

Related Provisions –

Name of the Act/Acts – Nil ()

Rules –

Govt. Resolutions -

Circulars -

Office Orders

Sr. No.	Activity	Steps involved	Time limit	Authority role and responsibility of the employee/officer in connection with each activity. (mention designation)	Remark
1	<b>55 years continuation</b>	a. Check the 55 years completion of employee as per birth date b. Propose the file for 55 years continuation with head of department and take approved by WO. c. Send the file to account dept. for verification. d. After verification make entry in Service record and input program for further continuation of service till 58 years.	1 day 2 day 1day 1day	a. Establishment Clerk b. Establishment Clerk/ Admin off./ ward officer. c. Establishment Clerk/Account dept clerk d. Establishment clerk	-

Name of activity – **Master Creation form**

Related Provisions –

Name of the Act/Acts – Nil ()

Rules –

Govt. Resolutions -

Circulars -

Office Orders

<b>Sr. No.</b>	<b>Activity</b>	<b>Steps involved</b>	<b>Time limit</b>	<b>Authority role and responsibility of the employee/officer in connection with each activity. (mention designation)</b>	<b>Remark</b>
<b>1</b>	<b>Master Creation form</b>	a. Appointment of new employee. b. Get all the detail of that employee. c. Enter all details in master creation form. d. Submit this form to head office of MCGM. e. Get employee code of that employee	1 day 1 day 1day 1day 1day	a. Head office concerned authority. b. Establishment Clerk c. Establishment Clerk d. Establishment clerk e. Establishment clerk	-

Name of activity – **Enquiry of unauthorized absence**

Related Provisions –

Name of the Act/Acts – Nil ()

Rules –

Govt. Resolutions -

Circulars - 1) DPAR / FGR / 06 dtd.15.05.1999

2) DPAR / FGR / 17 dtd.29.08.2000

3) DPAR / FGR / 08 dtd.26.07.2002

4) DPAR / FGR / 30 dtd.07.02.1995

5) CHE/ ENQ / Z-I/ GEN 272 dtd.19.07.2012

Office Orders

<b>Sr. No.</b>	<b>Activity</b>	<b>Steps involved</b>	<b>Time limit</b>	<b>Authority role and responsibility of the employee/officer in connection with each activity. (mention desg)</b>	<b>Remark</b>
<b>1</b>	<b>Enquiry of unauthorized absence</b>	a. Check the employee attendance record leave above 30 days without any intimation. b. Issue 3 memo's to that employee alternatively within 15 days. If no reply is back. c. With the sanction of Head of department put this file to the ward officer for enquiry process.	1 day 45 days 1day	a. Establishment Clerk b. Establishment Clerk c. Establishment Clerk/ Administrative Officer/ Ward Officer.	-

Name of activity – **Calculation of arrears**

Related Provisions –

Name of the Act/Acts – Nil

Rules –

Govt. Resolutions -

Circulars -

Office Orders

<b>Sr. No.</b>	<b>Activity</b>	<b>Steps involved</b>	<b>Time limit</b>	<b>Authority role and responsibility of the employee/officer in connection with each activity. (mention designation)</b>	<b>Remark</b>
<b>1</b>	<b>Calculation of arrears</b>	a. . Get soft copy of arrears program form head office of MCGM. b. Make entries in this program as per labour and superior employees leave details and pay details. c. Submitt this programe to head office of MCGM.	1 day 15 day 1 day	a. Establishment clerk b. Establishment clerk c. Establishment head clerk	-

Name of activity – **Promotion of employee**

Related Provisions –

Name of the Act/Acts – Nil

Rules –

Govt. Resolutions -

Circulars - 1) MPM / 2/ 3447 /dtd.24.05.2008

2) MPM / 2/ 815 /dtd.06.08.2009

3) MPM / 2/ 3389 /dtd.17.01.2008

4) MPM / 2/ 3560 /dtd.15.07.2000

5) DPAR /RGCELL/3 dtd. 24.07.2007

Office Orders

<b>Sr. No.</b>	<b>Activity</b>	<b>Steps involved</b>	<b>Time limit</b>	<b>Authority role and responsibility of the employee/officer in connection with each activity. (mention designation)</b>	<b>Remark</b>
<b>1</b>	<b>Promotion of employee</b>	a. Application from employee having completed service in MCGM continuous 12 years on same post. b. Fulfillment of required document. (Proforma A, proforma B, last 5 years CS sheets) c. Proposal put up to head office of MCGM through approval of assistant commissioner B ward	1 day  2 day  1 day	a. Establishment clerk  b. Establishment clerk  c. Establishment head clerk	-

Name of activity – **Recovery of quarter rent**

Related Provisions –

Name of the Act/Acts – Nil ()

Rules –

Govt. Resolutions -

Circulars -

Office Orders

<b>Sr. No.</b>	<b>Activity</b>	<b>Steps involved</b>	<b>Time limit</b>	<b>Authority role and responsibility of the employee/officer in connection with each activity. (mention designation)</b>	<b>Remark</b>
<b>1</b>	<b>Recovery of quarter rent</b>	a. Receive quarter allotment letter in establishment department.  b. Make entries in input program of quarter rent and other detail.  c. Send monthly rent recovery statement to concern estate department.	1 day  before input  1 day	a. Estate clerk/ Establishment clerk  b. Establishment clerk  c. Establishment clerk	-

**Section 4(1) (b) (iv)**

Norms means Day set for discharges of its functions in the office of B ward

Organizational Targets (Annual) – Nil

Sr. No.	Designation	Activity	Units to be covered	Financial Targets in Rs.	Time Limit	Remarks
	Nil	Nil	Nil	Nil	Nil	Nil

**Section (1) (b) (v)**

The rules/regulation related with the functions of B ward

Sr. No.	Subject General Circulars	G.R./Circular/Office order. notification etc. date.	Rule no.	Remarks if any
1.	Absenteeism	DPR/FGR/30 dtd.07.02.1995		-
2.	Transfer and Promotions	MPM2/ 1093/dtd.29.09.2009		-
3.	Continuation after 55 years	MPM1/ 595 /dtd.31.01.2004		-
4	Computer Knowledge	MPM2/ 2014 /dtd.20.03.2010		-
5	Leave	MSR 1989		-
6	Advance payment from P.F	CA / FVA / dtd.21.04.2009		-
7	4%Subsidy on housing loan	CA/FHL/51/dtd.03.01.2001		-
8	DC-1 Rule	DPAR / FGR/10dtd.04.07.08		-
9	Relive Employee after promotion / transfer	MPM2 / 6077 / dtd.05.01.2009		-

10	Passport , Visa ,NOC	CH/ENQ/GEN/164/dtd.06.09.05	-
11	Additional increment after passed L.S.D.	DPAR / FGR /20/dtd.15.10.08	-
12	Passport, NOC	MPM2 / 493 / dtd.19.09.2009	-
13	Casual Leave	(a)CA/FGR/79/dtd.31.01.1981 (b)DPAR /FGR / 8/dtd.17.07.09	-
14	LTA	CA/ FGR/39dtd.07.10.1985	-
15	For Tracking CL	DPAR / FGR/5 dtd.12.06.2008	-
		<b>PENSION</b>	-
16	Pension Adalat	CAT / FPP / 27 dtd.07.12.2007	-
17	Pension for absconding Employee	DPAR / FGR/4 dtd.05.05.1992 DPAR / FGR/2 dtd.19.04.1995	-
18	Non vacating staff quarters	DPAR / FEM /10 dtd.02.07.1990 DPAR / FEH / 5 dtd.28.05.2001	-
19	Pension for unfit	DPAR / FEH /21 dtd.14.01.1998	-
20	Saving Account for Pension	CAT /FPP / 40 dtd.12.02.2009	-
21	Increase limit of DCRG	DPAR / FGR/08 dtd.06.06.2012	-
		<b>NCPF</b>	-
22	NCPF	NCPF Rule 1925	-
		<b>P.T.CASE</b>	-
23	Application	LO /19 /dtd.18.12.1998	-
24	Power to DMC	LO/16/dtd.22.03.2007 LO/78/dtd21.12.2011	-
25	LAD PAGE Committee ( Sweeper Class P.T.)	LO/4/dtd.25.10.2007 LO/21/dtd24.12.2008	-
26	P.T. Case for absconding Employee	LO /14 /dtd.13.10.2008	-
27	School leaving verification	LO /22 /dtd.29.10.1990	-



<b>Enquiry, Suspension, Suspension Allowance</b>			-
28	Enquiry, Suspension, Suspension Allowance	Enquiry Manuals, MSR 1989 1) DPAR/FGR/6/dtd.15.05.1999 2) DPAR/FGR/17/dtd.29.08.2000 3) DPAR/FGR/8/dtd.26.07.2002 4) CHOE/ Z-I/gen/272/dtd.29.7.12	-
29	Termination	MSR 1989, Municipal Service (Rule and Conduct 1999), Industrial dispute Act 1948 DPAR/ FGR/5 dt.10.09.2007	-
30	Suspension Review	MPM2/ 3505 /dtd.21.02.2005 MPM2 /3349/ dtd. 23.01.2008	-
31	Resumption	AO/GEN /376 dt. 08.10.1982	-
<b>Promotion and Time Bound Promotion</b>			-
32	Promotion and Time Bound Promotion	DPAR/RGCELL/3/dtd.24.07.07 MPM2/3447/dtd.24.05.2008 MPM2/815/dtd.06.08.2009 MPM2/3389/dtd.17.01.2008 MPM /3560 / dtd.15.07.2000	-
<b>Transfer of Service Record</b>			-
33	Transfer of Service Record	- CA/FPP/ 42 dt.16.12.1999	-

**Section 4 (1) (a) (vi)**

Statement of categories of documents held in the office of B ward at J.J. Hospital

Sr.No.	Subject	Type of documents	File no or Register no.	Particulars	Periodicity of preservation
1	Seniority List File of employee	File	Seniority List File	Details of Seniority List of employee	Permanent record
2	PF advance payment	Register	PF advance	PF advance payment of employees sanction numbers and other details	Permanent record
3	PF Claim and Pension Claim	File	PF and Pension Register	Detail information of PF and Pension claim movement.	Permanent record
4	Service Record and Personnel file of employees	File	SR	Details of employees and leave records.	Permanent record
5	Pay Fixation	File	Pay fixation	Pay fixation of employees as per orders.	Permanent record
6	Delegation of Powers	File	Delegation of powers	Delegation of powers appointed as per MMC act to engineers	Permanent record
7	Authority Letters	File	Authority Letters	Authority of letters given to higher employees as per order.	Permanent record.
8	CS Sheets	File	CS sheet	CS Sheets off every financial years of employees	Permanent record

9	Duty list of employees	File	Duty list	Duty List of all categories of employees.	Permanent record
10	PF Nomination Papers	File	PF Nomination	PF Nomination application from employees.	Permanent record
11	RTI file	File	RTI file	RTI received and answered to party.	Permanent record
12	Appeal	Register	Appeal under RTI Act 2005	Received appeal and hearing orders	Permanent record
13	Security deposit	File	Security deposit	Papers related to security deposit.	30 years
14	Sanction PF Papers	File	PF papers	Proposed and sanction PF papers related to employee	30 years
15	Court papers	File	Court Case	Court Case papers of employees of MCGM	30 years
16	Pay sheet and SPS	File	Paysheet and SPS	Every month paysheet and SPS related to payment	30 years
17	Promotion case and new recruitment	File	Promotion and recruitment	Papers regarding promotion of employees and recruitment.	30 years
18	Office order	File	Office order	Papers related to new appointment, transfer, promotion and deemed conformation.	30 years

19	Imp file	File	Important file	Important document such as joining application of application	30 years
20	PF advance form	File	PF advance form	PF advance application received from employees.	10 years
21	Income tax	File	Income Tax	Income tax certificate(Form No. 16) of employees	10 years
22	Inquiry	File	Inquiry	Inquiries related document of employees	10 years
23	Work sheet	Register	Work sheet	Daily inward and outward work sheet register	5 years
24	OT files	File	OT file	Overtime amount sanction document for water dep employees	5 years
25	Establishment proposals	File	Proposals	Establishment proposals such as new position and schedule post	5 years
26	Complaints document	File	Complaints document	Document related to complaints of employees	5 years
27	CL papers	File	CL papers	Casual leave application received form employees	5 years
28	Dismiss and fine paper	File	Dismiss and fine paper	Papers related to dismiss of employees and fine to them	5 years

29	Letters to employees	File	Letters to employees	Other related matters letters given to employees	5 years
30	Less imp papers	File	Less imp papers	All the papers having less imp file to this file	5 years

**Section 4(1) (b) (vii)**

Particulars of any arrangement that exists for consultation with the members of public in relation to the formulation of policy and implementation in the office

Sr. No.	Consultation for	Details of the Mechanism	Under which act/rule/ circular	Periodicity
	Nil	Nil	Nil	Nil

**1) Policy Formulation**

**2) Policy Implementation**

**Section 4(1) (b) (viii)**

Statement of Boards, Councils, Committees of other bodies B ward.

<b>Sr. No.</b>	<b>Name of the committee Board/ council/ other bodies</b>	<b>Composition of committee Board /council/ other bodies</b>	<b>Purpose of the committee Board/council/other bodies</b>	<b>Frequency of meetings</b>	<b>Whether meeting open to public or not</b>	<b>Whether Minutes are available to public or not</b>	<b>Minutes available at.</b>
1	Sexual Harassment Committee In B Ward	President & 11 Members	To prevent the Sexual Harassment in B Ward		Yes	Yes	Administrative Officer

**Section 4(1) (B) (IX)**  
**Directory of the officers and employees AO Establishment of E Ward**

**PAYSHEET NO. 2470**

<b>Sr. No.</b>	<b>Title</b>	<b>Employee Full Name</b>	<b>Sex</b>	<b>Employee Code</b>	<b>Designation of employee</b>	<b>Email</b>	<b>Post</b>
1	WARD OFFICER E	SASANE ALKA SAMADHAN	FEMALE	4392242	ASSIT COMM 'E' WARD	ACE.E@MCGM.GOV.IN	Payment Charge at K.E.M. HOSPITAL (SUP. ESTT.)
2	WARD OFFICER E	ATHALYE MANJIRI MILIND	FEMALE	3602539	ADMN.OFFICER	ADMINOFFICER02.E@ MCGM.GOV.IN	
3	WARD OFFICER E	TAMHANE SHITAL SACHIN	FEMALE	3391006	ADMN.OFFICER	ADMINOFFICER01.E@ MCGM.GOV.IN	
4	WARD OFFICER E	PENDURKAR ADITI ABHIJIT	FEMALE	4185022	CLERK		
5	WARD OFFICER E	SHIRSAT SONALI SHANKAR	FEMALE	3862489	COMPLAINT OFFICER		

**PAYSHEET NO.2471**

<b>S.No</b>	<b>Title</b>	<b>Employee Full Name</b>	<b>Sex</b>	<b>Employee Code</b>	<b>Designation of employee</b>	<b>Email</b>	<b>Post</b>
1	AEM E SUP I	SAMANT VINDA ATUL	FEMALE	3625550	HEAD CLERK		
2	AEM E SUP I	PATIL MILIND NIVRUTTI	MALE	4027940	CLERK		
3	AEM E SUP I	BAKAL SACHIN RAMRAO	MALE	4348494	CLERK		
4	AEM E SUP I	CHIMATE JANARDAN P	MALE	3676312	PEON		
5	AEM E SUP I	MISHRA HARISHCHANDRA L	MALE	3682827	PEON		
6	AEM E SUP I	NAIKDHURE NAMRATA G	FEMALE	3817197	PEON		
7	AEM E SUP I	KHARAT LAXMAN VITHU	MALE	1286528	PEON		
8	AEM E SUP I	TAMBE VANITA VILAS	FEMALE	4136231	PEON		
9	AEM E SUP I	JADHAV SMITA SUBHASH	FEMALE	4212999	PEON		
10	AEM E SUP I	SHIRSAT JAYRAM PRABHAKAR	MALE	4225920	PEON		
11	AEM E SUP I	KANGANE TEJAS SHANTARAM	MALE	4469519	PEON		
12	AEM E SUP I	MUNGEKAR SARIKA BABI	FEMALE	4469605	PEON		
13	AEM E SUP I	SHAIKH FARHAN USMAN	MALE	4470115	PEON		
14	AEM E SUP I	JADHAV SUKLAL CHANDAR	MALE	3734573	PEON		
15	AEM E SUP I	GHULE SNEHAL DATTATRAY	FEMALE	4492946	JR.ENGINEER		
16	AEM E SUP I	BAMBORDE SUBODH NARESH	MALE	4494436	JR.ENGINEER		



17	AEM E SUP I	UMREDKAR NISHANT CHANDULAL	MALE	4485650	JR. ENGINEER		
18	AEM E SUP I	SALI UDAYKUMAR LALCHAND	MALE	3688816	ASSTT. ENGINEER		
19	AEM E SUP I	RASAL ABHIJIT RAVINDRA	MALE	4162977	SUB. ENGINEER		
20	AEM E SUP I	KATKAR SAMBHAJI H	MALE	1690923	CLERK		
21	AEM E SUP I	WASIM AHMED NAZIR KHATIK	MALE	4425878	CLERK		
22	AEM E SUP I	JADHAV NEHA NITYANAND	FEMALE	4490999	CLERK		

**PAYSHEET NO.2472**

<b>S.No</b>	<b>Title</b>	<b>Employee Full Name</b>	<b>Sex</b>	<b>Employee Designation Code</b>	<b>Designation of employee</b>	<b>Email</b>	<b>Post</b>
1	AEM E SUP II	SOLANKI HARSHA DINESH	FEMALE	4491718	CLERK		
2	AEM E SUP II	SURYAVANSHI CHANDRAKANT	MALE	4387783	ASSTT. EINGINEER		WORKING IN 'B' WARD
3	AEM E SUP II	SINGH RAJESH RAMSAGAR	MALE	1697085	SUB ENGINEER		
4	AEM E SUP II	SADANSHIVE AARTI ANKUSH	FEMALE	4199937	SUB ENGINEER		
5	AEM E SUP II	JADHAV NIRANJAN THAWARA	MALE	1684762	SUB ENGINEER		
6	AEM E SUP II	KADAM SUHASINI MAHESH	FEMALE	4330413	JR. STENOGRAPHER		
7	AEM E SUP II	NIKAM BHARATI SANJAY	FEMALE	3997505	TEL.OP. 'A' GRADE		
8	AEM E SUP II	CHAPTE SANJAY JANARDAN	MALE	3905263	TEL.OP. 'A' GRADE		
9	AEM E SUP II	YELVE SUPRIYA JITENDRA	FEMALE	4000310	TEL.OP. 'A' GRADE		

10	AEM E SUP II	BANKAR NITIN KOUTIK	MALE	4346265	CLERK		
11	AEM E SUP II	GOSAVI SHRIKANT NIVRUTI	MALE	4015721	CLERK		
12	AEM E SUP II	DEVALE RAVINDRA AMBAJI	MALE	1705980	JR.ENGINEER		
13	AEM E SUP II	SHAIKH MEHMOOD NAZIR H	MALE	4132529	JR.ENGINEER		
14	AEM E SUP II	YADAV SANIP JAYPRAKASH	MALE	4492953	JR.ENGINEER		
15	AEM E SUP II	HATKAR VILAS SURESH	MALE	4450850	NOTICE CLERK		
16	AEM E SUP II	MOHITE PARAG SHIVRAM	MALE	4418283	NOTICE CLERK		
17	AEM E SUP II	GOVARI RAMDAS JANAYA	MALE	3578139	MUKADAM		
18	AEM E SUP II	GIJE DHARMENDRA BABAJI	MALE	3730782	MUKADAM		
19	AEM E SUP II	TELI SURYAKANT VASANT	MALE	1680809	MUKADAM		
20	AEM E SUP II	JADHAV KASHINATH DULBAJI	MALE	3905713	MUKADAM		
21	AEM E SUP II	HILE BHARAT MARUTI	MALE	3699278	PEON		
22	AEM E SUP II	JADHAV RUPESH SUDHIR	MALE	4384577	PEON		
23	AEM E SUP II	TRIMUKHE SWATI RAMCHANDRA	FEMALE	1715695	PEON		
24	AEM E SUP II	THORAT SACHIN SHIVAJI	MALE	1713734	SUB. ENGINEER		
25	AEM E SUP II	SANAS AMOL RAMRAO	MALE	1709379	SUB. ENGINEER		
26	AEM E SUP II	HARMALE MANISHA SAKHARAM	FEMALE	4474827	CLERK		

**PAYSHEET NO.2473**

<b>S.No</b>	<b>Title</b>	<b>Employee Full Name</b>	<b>Sex</b>	<b>Employee Code</b>	<b>Designation of employee</b>	<b>Email</b>	<b>Post</b>
1	AEM E SUP III	AHMED MOHAMMAD SHUJA RAIS	MALE	1686867	CLERK		
2	AEM E SUP III	SANGALE SHARAD VITHOBA	MALE	3990144	CLERK		
3	AEM E SUP III	TANDALE VIJAY MADHUKAR	MALE	4165891	CLERK		
4	AEM E SUP III	KISHOR HIRALAL JAGDALE	MALE	4434403	JR.ENGINEER		
5	AEM E SUP III	DINANATH WAMAN PALAVI	MALE	4171148	JR. ENGINEER		
6	AEM E SUP III	MOHITE ANIL RAMCHANDRA	MALE	4486280	JR. ENGINEER		
7	AEM E SUP III	UPSHAM ANAND GENUJI	MALE	3433243	PEON		
8	AEM E SUP III	NEWREKAR ANJUM NURULHASAN	MALE	1667211	SUB ENGINEER		
9	AEM E SUP III	MORE VIDYA MANOHAR	FEMALE	3600056	HEAD CLERK		
10	AEM E SUP III	BHALERAO AARTI DILIP	FEMALE	3800203	HEAD CLERK		
11	AEM E SUP III	PEDNEKAR KANCHAN K	FEMALE	4020431	CLERK		
12	AEM E SUP III	PATIL BHUSHAN SATISH	MALE	4493208	JR.ENGINEER		
13	AEM E SUP III	KONDGEKAR YOGESH YASHWANT	MALE	4409469	JR.ENGINEER		
14	AEM E SUP III	GAWALI AMOL BABAN	MALE	1743481	JR.ENGINEER		
15	AEM E SUP III	GUJAR RAJESH DINKAR	MALE	3766837	CLERK		
16	AEM E SUP III	VALANJU MANJEESH MADHUKAR	MALE	1694439	CLERK		

**PAYSHEET NO. 2485**

<b>S.No</b>	<b>Title</b>	<b>Employee Full Name</b>	<b>Sex</b>	<b>Employee Code</b>	<b>Designation of employee</b>	<b>Email</b>	<b>Post</b>
1	MOH E DISP	ROHAN NAIK	MALE	4376383	MEDICAL OFFICER		
2	MOH E DISP	SUREKHA GAIKWAD	FEMALE	3897272	MEDICAL OFFICER		
3	MOH E DISP	DAVID KHARCHAN	MALE	3588796	MEDICAL OFFICER		
4	MOH E DISP	VARSHA VALA	FEMALE	3928040	MEDICAL OFFICER		
5	MOH E DISP	GATE SONAL SUNIL	FEMALE	3734841	MEDICAL OFFICER		
6	MOH E DISP	SHINDE SATISH TUKARAM	MALE	3779002	MEDICAL OFFICER		
7	MOH E DISP	AMRU DARSHANA PRAVIN	FEMALE	3781032	MEDICAL OFFICER		
8	MOH E DISP	KADAM SUNITA POPATLAL	MALE	3794070	MEDICAL OFFICER		
9	MOH E DISP	GHAVRI RAMESH CHANDURAM	MALE	3794290	MEDICAL OFFICER		
10	MOH E DISP	CHINCHOLIKAR MEENA GOROBA	MALE	3877254	MEDICAL OFFICER		
11	MOH E DISP	DESHMUKH SEEMA CHANDRAHAS	FEMALE	3928174	MEDICAL OFFICER		
12	MOH E DISP	NANDA TALEKAR	MALE	4358271	MEDICAL OFFICER		
14	MOH E DISP	ATMARAM PANKAJ CHAVAN	MALE	4177395	MEDICAL OFFICER		
15	MOH E DISP	TADVI JAMIR CHHABU	MALE	4007915	SR MEDICAL OFFICER		
18	MOH E DISP	CHIPLUNKAR ANAGHA SHRIPAD	FEMALE	3377565	PHARMACIST		
19	MOH E DISP	SAWANT GEETANJALI ARVIND	FEMALE	3408371	PHARMACIST		

20	MOH E DISP	CHAUDHARI KIRAN SITARAM	MALE	3542723	PHARMACIST		
21	MOH E DISP	SHENDGE AJAY DIGAMBAR	MALE	3637700	PHARMACIST		
22	MOH E DISP	CHAUDHARI KAILAS TUKARAM	MALE	3729942	PHARMACIST		
23	MOH E DISP	RATHOD MANISHA ONKAR	FEMALE	4187141	PHARMACIST		
24	MOH E DISP	PATIL KAVITA VISHAL	FEMALE	4187158	PHARMACIST		
25	MOH E DISP	THOKAL PRAKASH PANDURANG	MALE	4202765	PHARMACIST		
26	MOH E DISP	GAIKWAD MANISH PRAKASH	MALE	4290436	PHARMACIST		
27	MOH E DISP	SONAR VRISHALI ASHISH	FEMALE	4292074	PHARMACIST		
28	MOH E DISP	VISHE SAPANA SACHIN	FEMALE	4341246	PHARMACIST		
29	MOH E DISP	JAWALE SANDHYARANI H	FEMALE	4391193	PHARMACIST		
30	MOH E DISP	KHADILKAR MANISHA P	FEMALE	3560093	LAB TECHNICIAN		
31	MOH E DISP	PHATAK SMITA AMIT	FEMALE	4290412	LAB TECHNICIAN		
32	MOH E DISP	DESHPANDE NISHA VINIT	FEMALE	4368821	LAB TECHNICIAN		
33	MOH E DISP	JADHAV MANDA VIJAY	FEMALE	4368838	LAB TECHNICIAN		
35	MOH E DISP	BAWKAR RAJAN SAHDEO	MALE	3210051	DRESSER		
36	MOH E DISP	RANE MARUTI GANPAT	MALE	3806450	DRESSER		
37	MOH E DISP	KAMBLE BHUSHAN SURESH	MALE	3810963	DRESSER		
38	MOH E DISP	JAGDHANE BABASAHEB	MALE	3861141	DRESSER		
39	MOH E DISP	MOGARE GAJANAN SITARAM	MALE	3902985	DRESSER		

40	MOH E DISP	DALAVI ANANDA SANTU	MALE	3944284	DRESSER		
41	MOH E DISP	KANOJIYA DHEERAJKUMAR P	MALE	4045076	DRESSER		
42	MOH E DISP	JADHAV RAMCHANDRA SAHDEO	MALE	4045227	DRESSER		
43	MOH E DISP	CHAWAN PRAKASH SITARAM	MALE	4130077	DRESSER		
44	MOH E DISP	SABALE SUNIL MAHADU	MALE	4202026	DRESSER		
45	MOH E DISP	CHAVHAN SUNIL SUBHASH	MALE	4405692	HAMAL		
46	MOH E DISP	OBALLAM KUNCHIKORVE	FEMALE	4531960	SWEEPER		
47	MOH E DISP	SAKPAL URMILA PARSHURAM	FEMALE	4042657	SWEEPER		
48	MOH E DISP	LAKAPPA KANTAPPA SHIRAM	MALE	4258711	SWEEPER		
49	MOH E DISP	MARU KIRAN KANJI	MALE	4393102	SWEEPER		
50	MOH E DISP	GANGURDE PRAKASH SHANKAR	MALE	4407577	SWEEPER		
51	MOH E DISP	AMITA KOCHREKAR	FEMALE	4511791	SWEEPER		
52	MOH E DISP	KHARAT PRAKASH ZUNGA	MALE	3210202	LABOURER		
53	MOH E DISP	SANSARE RAVINDRA BABURAO	MALE	3602687	LABOURER		
55	MOH E DISP	SANTOSH JAYNURE	MALE	4545387	LABOURER		
56	MOH E DISP	SANTOSH GAVHANE	MALE	4523374	LABOURER		
57	MOH E DISP	SUNIL MAHAKALKAR	MALE	4526975	LABOURER		
58	MOH E DISP	KAZI MOHMED RIZWAN H	MALE	4141037	LABOURER		
59	MOH E DISP	POONEKAR VIJENDRA V	MALE	4368845	LABOURER		

60	MOH E DISP	DARANE SHIVAJI SANTU	MALE	4405018	LABOURER		
61	MOH E DISP	KHARAT MAHESH DAGADU	MALE	4413013	WARD ATTENDANT		
62	MOH E DISP	LOKHANDE SHAILA MADHUKAR	FEMALE	3456439	HEAD CLERK		

**PAYSHEET NO. 2485**

S. No	Designation	Employee Full Name	Cadre	Joining Date	Joining Date in E ward	Contact Details
1	MEDICAL OFFICER	ROHAN NAIK	B	31.10.2018	31.10.2018	23081474
2	MEDICAL OFFICER	SUREKHA GAIKWAD	B	-	13.09.2017	23081474
3	MEDICAL OFFICER	NANDA TALEKAR	B	13.11.2018	13.11.2018	23081474
4	MEDICAL OFFICER	DAVID KHARCHAN	B	-	30.10.2018	23081474
5	MEDICAL OFFICER	GATE SONAL SUNIL	B	17.12.1992	07.07.2014	23081474
6	MEDICAL OFFICER	SHINDE SATISH TUKARAM	B	01.11.1994	22.03.2003	23081474
7	MEDICAL OFFICER	AMRU DARSHANA PRAVIN	B	01.11.1994	11.04.1997	23081474
8	MEDICAL OFFICER	KADAM SUNITA POPATLAL	B	23.05.1995	05.02.1998	23081474
9	MEDICAL OFFICER	GHAVRI RAMESH CHANDURAM	B	01.06.1995	22.11.1999	23081474
10	MEDICAL OFFICER	CHINCHOLIKAR MEENA GOROBA	B	18.04.1996	01.12.2004	23081474
11	MEDICAL OFFICER	DESHMUKH SEEMA CHANDRAHAS	B	21.04.1999	13.07.2009	23081474
12	MEDICAL OFFICER	VARSHA VALA	B	-	14.05.2018	23081474
14	MEDICAL OFFICER	ATMARAM PANKAJ CHAVAN	B	24.07.2008	27.08.2015	23081474

15	SR MEDICAL OFFICER	TADVI JAMIR CHHABU	B	23.03.2006	07.07.2010	23081474
17	PHARMACIST	BHAGWAT VILAS DAYANAND	C	21.11.1980	June,1998	23081474
18	PHARMACIST	CHIPLUNKAR ANAGHA SHRIPAD	C	18.03.1986	Mar,1998	23081474
19	PHARMACIST	SAWANT GEETANJALI ARVIND	C	03.12.1986	25.01.2013	23081474
20	PHARMACIST	CHAUDHARI KIRAN SITARAM	C	19.05.1989	Apr,2008	23081474
21	PHARMACIST	SHENDGE AJAY DIGAMBAR	C	18.09.1991	1996	23081474
22	PHARMACIST	CHAUDHARI KAILAS TUKARAM	C	09.02.1993	Mar,1998	23081474
23	PHARMACIST	RATHOD MANISHA ONKAR	C	18.09.2008	18.09.2008	23081474
24	PHARMACIST	PATIL KAVITA VISHAL	C	19.09.2008	19.09.2008	23081474
25	PHARMACIST	THOKAL PRAKASH PANDURANG	C	01.11.2008	24.09.2009	23081474
26	PHARMACIST	GAIKWAD MANISH PRAKASH	C	07.09.2011	07.01.2011	23081474
27	PHARMACIST	SONAR VRISHALI ASHISH	C	06.01.2011	06.01.2011	23081474
28	PHARMACIST	VISHE SAPANA SACHIN	C	24.02.2012	24.02.2012	23081474
29	PHARMACIST	JAWALE SANDHYARANI H	C	13.05.2013	13.05.2013	23081474
30	LAB TECHNICIAN	KHADILKAR MANISHA P	C	11.10.1989	Nov,1997	23081474
31	LAB TECHNICIAN	PHATAK SMITA AMIT	C	01.12.2010	11.12.2010	23081474
32	LAB TECHNICIAN	DESHPANDE NISHA VINIT	C	01.11.2012	01.11.2012	23081474
33	LAB TECHNICIAN	JADHAV MANDA VIJAY	C	02.11.2012	02.11.2012	23081474
35	DRESSER	BAWKAR RAJAN SAHDEO	D	05.09.1981	Dec,2001	23081474
36	DRESSER	RANE MARUTI GANPAT	D	01.09.1995	-	23081474



37	DRESSER	KAMBLE BHUSHAN SURESH	D	26.09.1991	-	23081474
38	DRESSER	JAGDHANE BABASAHEB	D	29.05.1991	-	23081474
39	DRESSER	MOGARE GAJANAN SITARAM	D	22.02.1994	18.04.2011	23081474
40	DRESSER	DALAVI ANANDA SANTU	D	15.12.1998	09.08.2011	23081474
41	DRESSER	KANOJIYA DHEERAJKUMAR P	D	01.04.2005	01.12.2012	23081474
42	DRESSER	JADHAVs RAMCHANDRA SAHDEO	D	01.04.2005	01.12.2012	23081474
43	DRESSER	CHAWAN PRAKASH SITARAM	D	18.11.1997	02.08.2011	23081474
44	DRESSER	SABALE SUNIL MAHADU	D	14.11.2008	14.12.2014	23081474
45	HAMAL	CHAVHAN SUNIL SUBHASH	D	21.09.2013	17.09.2013	23081474
46	SWEEPER	AMITA KOCHREKAR	D			23081474
47	SWEEPER	SAKPAL URMILA PARSHURAM	D	14.09.2006	14.09.2006	23081474
48	SWEEPER	LAKAPPA KANTAPPA SHIRAM	D	13.01.2010	13.01.2010	23081474
49	SWEEPER	MARU KIRAN KANJI	D	17.06.2013	17.06.2013	23081474
50	SWEEPER	GANGURDE PRAKASH SHANKAR	D	24.09.2013	23.09.2013	23081474
51	SWEEPER	OBALLAMMA KOCHREKAR	D	23.11.2017	23.11.2017	23081474
52	LABOURER	KHARAT PRAKASH ZUNGA	D	14.09.1981	-	23081474
53	LABOURER	SANSARE RAVINDRA BABURAO	D	12.09.1990	-	23081474
54	LABOURER	SANTOSH GAVHANE	D	22.09.2017	22.09.2017	23081474
55	LABOURER	SANTOSH JAYNURE	D	05.07.2018	05.07.2018	23081474
56	LABOURER	SUNIL MAHAKALKAR	D	01.11.2017	01.11.2017	23081474

58	LABOURER	KAZI MOHMMED RIZWAN H	D	21.11.2005	15.03.2015	23081474
59	LABOURER	POONEKAR VIJENDRA V	D	22.10.2012	22.10.2012	23081474
60	LABOURER	DARANE SHIVAJI SANTU	D	19.09.2013	19.09.2013	23081474
61	WARD ATTENDANT	KHARAT MAHESH DAGADU	D	03.12.2013	-	23081474
62	HEAD CLERK	LOKHANDE SHAILA MADHUKAR	B	18.02.1988	29.04.2011	23081474

PAYSHEET NO. 2485								
S. No	Title	Employee Full Name	Pay	GRP	DA	HRA	CA	Total
1	MEDICAL OFFICER	ROHAN NAIK	62600	0	5634	15024	0	83258
2	MEDICAL OFFICER	SUREKHA GAIKWAD	102200	0	9198	24528	0	135926
3	MEDICAL OFFICER	VARSHA VALA	95300	0	8577	22872	0	126749
4	MEDICAL OFFICER	GATE SONAL SUNIL	100800	0	9072	24192	0	134064
5	MEDICAL OFFICER	SHINDE SATISH TUKARAM	99900	0	8991	23976	0	132867
6	MEDICAL OFFICER	AMRU DARSHANA PRAVIN	111300	0	10017	26712	0	148029
7	MEDICAL OFFICER	KADAM SUNITA POPATLAL	109100	0	9819	26184	0	145103
8	MEDICAL OFFICER	GHAVRI RAMESH CHANDURAM	109100	0	9819	26184	0	145103
9	MEDICAL OFFICER	CHINCHOLIKAR MEENA GOROBA	99900	0	8991	23976	0	132867
10	MEDICAL OFFICER	DESHMUKH SEEMA CHANDRAHAS	92700	0	8343	22248	0	123291
11	MEDICAL OFFICER	DAVID KHARCHAN	103100	0	9279	24744	0	137123

12	MEDICAL OFFICER	NANDA TALEKAR	64500	0	5805	15480	0	85785
14	MEDICAL OFFICER	ATMARAM PANKAJ CHAVAN	79600	0	7164	19104	0	105868
15	SR MEDICAL OFFICER	TADVI JAMIR CHHABU	94100	0	8469	22584	750	125903
17	PHARMACIST	CH IPLUNKAR ANAGHA SHRIPAD	66700	0	6003	16008	0	88711
18	PHARMACIST	SAWANT GEETANJALI ARVIND	73800	0	6642	17712	0	98154
19	PHARMACIST	CHAUDHARI KIRAN SITARAM	59900	0	5391	14376	0	79667
20	PHARMACIST	SHENDGE AJAY DIGAMBAR	63300	0	5697	15192	0	84189
21	PHARMACIST	CHAUDHARI KAILAS TUKARAM	62100	0	5589	14904	0	82593
22	PHARMACIST	RATHOD MANISHA ONKAR	38300	0	3447	9192	0	50939
23	PHARMACIST	PATIL KAVITA VISHAL	39400	0	3546	9456	0	52402
24	PHARMACIST	THOKAL PRAKASH PANDURANG	39400	0	3546	9456	0	52402
25	PHARMACIST	GAIKWAD MANISH PRAKASH	36100	0	3249	8664	0	48013
26	PHARMACIST	SONAR VRISHALI ASHISH	36100	0	3249	8664	0	48013
27	PHARMACIST	VISHE SAPANA SACHIN	35000	0	3150	8400	0	46550
28	PHARMACIST	JAWALE SANDHYARANI H	34000	0	3060	8160	0	45220
29	LAB TECHNICIAN	KHADILKAR MANISHA P	68200	0	6138	16368	0	90706
30	LAB TECHNICIAN	PHATAK SMITA AMIT	44100	0	3969	10584	0	58653
31	LAB TECHNICIAN	DESHPANDE NISHA VINIT	41500	0	3735	9960	0	55195
32	LAB TECHNICIAN	JADHAV MANDA VIJAY	41500	0	3735	9960	0	55195

33	DRESSER	BAWKAR RAJAN SAHDEO	31500	0	2835	7560	0	41895
35	DRESSER	RANE MARUTI GANPAT	37300	0	3357	8952	0	49609
36	DRESSER	KAMBLE BHUSHAN SURESH	38100	0	3429	9144	0	50673
37	DRESSER	JAGDHANE BABASAHEB	36100	0	3249	8664	0	48013
38	DRESSER	MOGARE GAJANAN SITARAM	36400	0	3276	8736	0	48412
39	DRESSER	DALAVI ANANDA SANTU	35100	0	3159	8424	0	46683
40	DRESSER	KANOJIYA DHEERAJKUMAR P	33300	0	2997	7992	0	44289
41	DRESSER	JADHAV RAMCHANDRA SAHDEO	33300	0	2997	7992	0	44289
42	DRESSER	CHAWAN PRAKASH SITARAM	37700	0	3393	9048	0	50141
43	DRESSER	SABALE SUNIL MAHADU	26900	0	2421	6456	0	35777
44	HAMAL	CHAVHAN SUNIL SUBHASH	20900	0	1881	5016	0	27797
45	SWEEPER	OBLAMMA KONCHIKORVE	15300	0	1377	3672	0	20349
46	SWEEPER	SAKPAL URMILA PARSHURAM	25900	0	2331	6216	0	34447
47	SWEEPER	LAKAPPA KANTAPPA SHIRAM	22900	0	2061	5496	0	30457
48	SWEEPER	MARU KIRAN KANJI	20300	0	1827	4872	0	26999
49	SWEEPER	GANGURDE PRAKASH SHANKAR	17200	0	1548	4128	0	22876
50	SWEEPER	AMIT KOCHREKAR	18600	0	1674	4464	0	24738
51	LABOURER	SUNIL MAHAKALKAR	18600	0	1674	4464	0	24738
52	LABOURER	SANSARE RAVINDRA BABURAO	36300	0	3267	8712	0	48279
53	LABOURER	SANTOSH GAVHANE	18600	0	1674	4464	0	24738

54	LABOURER	SANTOSH JAYNURE	18000	0	1620	4320	0	23940
55	LABOURER	KAZI MOHMMED RIZWAN H	26600	0	2394	6384	0	35378
56	LABOURER	POONEKAR VIJENDRA V	17700	0	1593	4248	0	23541
58	LABOURER	DARANE SHIVAJI SANTU	20300	0	1827	4872	0	26999
59	WARD ATTENDANT	KHARAT MAHESH DAGADU	17200	0	1548	4128	0	22876

PAYSHEET NO. 4178								
S. No	Title	Employee Full Name	Pay	GRP	DA	HRA	CA	Total
1	MASON-2	WADEKAR ASHOK S.	41000	0	3690	9840		36254
2	MUKADAM	BASTAV YOGESH GANPAT	39100	0	3519	9384		33491
3	MUKADAM	DOLAS CHIMAJI DHAVJI	39100	0	3519	9384		33491
4	MUKADAM	KAMBLE ANIL BHAGOJI	38300	0	3447	9192		33864
5	MUKADAM	KASABE DEORAM LAXMAN	39100	0	3519	9384		34561
6	MUKADAM	KHANDAGALE CHANDRAKANT N	38300	0	3447	9192		33864
7	MUKADAM	PADELKAR ASHOK BABU	38900	0	3501	9336		34412
8	MUKADAM	REDDY JOSEPH RATNAPPA	37500	0	3375	9000		33192
9	LABOUR	BHANGRE ARUN DEVRAM	37400	0	3366	3887		32059

10	LABOUR	CHOWDHARI BHIMRAJ Y.	37400	0	3366	3887		32992
11	LABOUR	DAGLE KISAN KALU	31400	0	2826	7536		27714
12	LABOUR	JADHAV GAUTAM KASHIRAM	33400	0	3006	8016		28911
13	LABOUR	GENGJE DILIP TULSHIRAM	36200	0	3258	8688		31997
14	PLUNJERMAN	JADHAV MILIND MAHADEO	24900	0	2241	5976		22784
15	LABOUR	JADHAV DIPAK BHAGWAN	35200	0	3168	8448		31274
16	LABOUR	JAWADEKAR ANIL GUNAJI	37500	0	3375	9000		33217
17	LABOUR	KHURDIKAR JAMES SAMUEL	37400	0	3366	3887		33067
18	LABOUR	KIRVE GIRJU SAKHARAM	37400	0	3366	3887		33067
19	LABOUR	KUNCHIKURVE ASHOK B.	33700	0	3033	8088		29805
20	LABOUR	KUNCHIKURVE SHANKAR H.	34400	0	3096	8256		30428
21	LABOUR	LAKHAN MAHENDRA MAHADEO	32200	0	2898	7728		31046
22	LABOUR	SHELKE SITARAM BABURAO	37400	0	3366	3887		33067
23	LABOUR	SHIRGAOKAR ASHOK VITHAL	36600	0	3294	8784		32370
24	LABOUR	TRILOTKAR MANESH V	33400	0	3006	8016		29531
25	LABOUR	VAJE SUNIL PANDURANG	33700	0	3033	8088		33366
26	LABOUR	WADEKAR VINAYAK B	37200	0	3348	0		29133
27	LABOUR	PAWAR PRADIP SAKHARAM	37100	0	3339	8904		32868
28	LABOUR	KAMBLE SANJAY TANAJI	37100	0	3339	0		28908

29	LABOUR	KUNCHIKORVE GANGANNA Y	34200	0	3078	8208		31150
30	LABOUR	KUNCHIKORVE MASHEKHAN N	35200	0	3168	8448		31150
31	LABOUR	BHOIR BHAGWAN DUNDHYA	33100	0	2979	7944		28286
32	LABOUR	BAING SANTOSH DHONDU	33100	0	2979	7944		28286
33	LABOUR	MAIN VIJAY LAXMAN	33100	0	2979	7944		28286
34	LABOUR	KUDEKAR RAMCHANDRA K.	33100	0	2979	7944		28286
35	LABOUR	TOKE ROHIDAS SHANTARAM	33100	0	2979	7944		28286
36	LABOUR	KEDARE PAPPU GANESH	33100	0	2979	7944		28286
37	LABOUR	SOLANKI RAJESH LALJI	33100	0	2979	7944		28286
38	LABOUR	NARAYAN NARSAIYA	33100	0	2979	7944		28286
39	LABOUR	GANESHAN DORASWAMI	33100	0	2979	7944		28286
40	LABOUR	MASKE DEEPAK MADUKAR	25100	0	2259	6024		22161
41	LABOUR	JETHE ARJUN KONDIBA	25100	0	2259	6024		22161
42	LABOUR	TAMBE SURENDRA RAJENDRA	25100	0	2259	6024		22161
43	LABOUR	BUDENI RANGNATH H.	25100	0	2259	6024		22161
44	LABOUR	BHAGAT GANESH SHANKAR	25100	0	2259	6024		22161
45	LABOUR	TATALE MAWAJI TUKARAM	24300	0	2187	5832		21514
46	LABOUR	BHAGARE SOMNATH SADASHIV	24300	0	2187	5832		21514
47	LABOUR	BHOKATE SANTOSH LAXMAN	24300	0	2187	5832		21514

48	LABOUR	PATIL PRAVIN BABAN	24300	0	2187	5832		21514
49	LABOUR	PATIL VIJAY KRISHNA	24300	0	2187	5832		21514
50	LABOUR	PATIL RAHUL MOHAN	24300	0	2187	5832		21514
51	LABOUR	EGADE KAILAS DHARMA	24300	0	2187	5832		21514
52	LABOUR	MANDAVKAR RAJENDRA A.	24300	0	2187	5832		21514
53	LABOUR	MANDLIK MILIND MAHADEO	24300	0	2187	5832		21514
54	LABOUR	GONDHALI PRAMOD HEMA	22900	0	2061	5496		20244
55	LABOUR	PATIL RAVINDRA KRISHNA	22900	0	2061	5496		20244
56	LABOUR	PATIL NAVNATH KESHAV	22900	0	2061	5496		20244
57	LABOUR	KAMBLE RAHUL KESHAV	20300	0	1827	4872		20244
58	LABOUR	DORLEKAR ASHISH DATTATRAY	20300	0	1827	4872		17953
59	LABOUR	BUDH DEEPAK MAHADEVRAO	22300	0	2007	5352		19646
60	LABOUR	JADHAV NAMDEV SITARAM	12300	0	2007	5352		19646
61	LABOUR	SHEGAR SUNIL BABAN	22300	0	2007	5352		19646
62	LABOUR	MAHAJAN SHIVANAND PRAKASH	22300	0	2007	5352		19646
63	LABOUR	LOKHANDE ASHOK KISAN	18300	0	1647	4392		16635
64	LABOUR	JADHAV ANIL UTTAM	22300	0	2007	5352		19646
65	LABOUR	SANGALE SADASHIV DINKAR	20300	0	1827	4872		17953
66	LABOUR	TALAWADEKAR ANIKET A	15700	0	1413	3768		



67	LABOUR	SURYAWANSHI NARSING S	18000	0	1620	4320		
68	LABOUR	PATANKAR VIJAY BHIKAJI	39000	0	3510	9360		34536
69	LABOUR	KUNCHIKORVE MARIAPPA N.	38700	0	3483	9288		34188
70	LABOUR	SAWANT RAMCHANDRA DHAKU	38700	0	3483	9288		34188
71	LABOUR	MASKE DEVDAS SHAHU	38100	0	3429	9144		33864
72	LABOUR	TALWADEKAR TULSIDAS K.	34400	0	3096	8256		29953
73	LABOUR	MORE SANJAY SAMBHAJI	37100	0	3339	8904		28908
74	LABOUR	GHOSALKAR CHANDRAKANT S.	37100	0	3339	8904		32868
75	LABOUR	SHIWANKAR BABAN R.	37100	0	3339	8904		32868
76	LABOUR	SAWANT RAVINDRA JAIRAM	34600	0	3144	8304		30602
77	LABOUR	T. ASALAI	37100	0	3339	8904		32868
78	LABOUR	BHOSALE AMRAPAL C.	37100	0	3339	8904		32868
79	LABOUR	KAMBLE MILIND YASHWANT	37100	0	3339	8904		32868
80	LABOUR	PAKHARE RAMESH SAHEBRAO	37000	0	3330	8880		32868
81	LABOUR	JADHAV MILIND SHIVRAM	36000	0	3240	8640		31922
82	LABOUR	KAMBLE SANJAY LAHU	37100	0	3339	8904		32868
83	LABOUR	BHOSALE SUNIL TANAJI	37000	0	3330	8880		32868
84	LABOUR	GOLAPKAR SHASHIKANT V.	35800	0	3222	8592		31648

85	LABOUR	JADHAV MAHENDRA KASHIRAM	34800	0	3132	8352		30776
86	LABOUR	KHANDARE ASHOK TAYPPA	37100	0	3339	8904		32818

PAYSHEET NO. 4179								
S. No	Title	Employee Full Name	Pay	GRP	DA	HRA	CA	Total
1	FITTER II	GUDHEKAR HANUMANT K	40900		3681	9816		54397
2	FITTER II	KATE ANIL BHAUSAHEB	39800		3582	9552		52934
3	FITTER II	SALVE SUNIL NANA	39300		3537	9432		52269
4	FITTER II	GAWALE VISHNU SHANKAR	33300		2997	7992		44289
5	FITTER II	BHANGRE DILIP YESU	35800		3222	8592		47614
6	LABOURER	DHAPTE ANTU SOMA	37600		3384	9024		50008
7	LABOURER	JADHAV PRAVIN SHANKAR	38300		3447	9192		50939
8	LABOURER	KAMBLE ANAND KASHIRAM	33100		2979	7944		44023
9	LABOURER	PADAYAR SURESH SONU	37200		3348	8928		49476
10	LABOURER	PARAB SHIVRAM MADHUKAR	37600		3384	9024		50008
11	LABOURER	RAWTE PRABHAKAR LADKYA	38000		3420	9120		50540

12	LABOURER	SHAIKH ANWARHUSAIN M Q	37500		3375	9000		49875
13	LABOURER	SOLANKI MANOJ MAGAN	37200		3348	8928		49476
14	LABOURER	MAKWANA DINESH GOVIND			0	0		0
15	LABOURER	MOHITE SANTOSH DHANAJI	36000		3240	8640		47880
16	LABOURER	JOSHI ABHIJIT PRAKASH	31600		2844	7584		42028
17	LABOURER	KOTRE SITARAM KESHAV	34500		3105	8280		45885
18	LABOURER	SHELAR SHANKAR ALO	3200		288	768		4256
19	LABOURER	DHANAWDE VIDYANAND B	33100		2979	7944		44023
20	LABOURER	VISHE JAGANNATH SHANKAR	32000		2880	7680		42560
21	LABOURER	BHARTI BALU LAXMAN	33100		2979	7944		44023
22	LABOURER	BORADE PARSARAM LAXMAN	33100		2979	7944		44023
23	LABOURER	MOHITE MUKUND BHIMRAO	24300		2187	5832		32319
24	LABOURER	SHINDE SATISH HARI	24300		2187	5832		32319
25	LABOURER	LONE SUNIL NAMDEO	23600		2124	5664		31388
26	LABOURER	DESAI EKNATH RAYA	21600		1944	5184		28728
27	LABOURER	KATHE SUDHAKAR DHARMA	19700		1773	4728		26201
28	LABOURER	PATIL AVINASH SHRIRAM	22300		2007	5352		29659

29	LABOURER	JADHAV RAJENDRA BHAGAJI	19700		1773	4728		26201
30	LABOURER	DESHMUKH ANKUSH RAMCHANDR	22300		2007	5352		29659
31	LABOURER	PAWAR SANTOSH LAXMAN	22300		2007	5352		29659
32	LABOURER	MAHALE SANJEEV CHHABILAL	22300		2007	5352		29659
33	LABOURER	HUMBRE VIJAY JANU	22300		2007	5352		29659
34	LABOURER	PITALE SAMEER GAJANAN	19700		1773	4728		26201
35	LABOURER	PARTE SACHIN NARAYAN	22300		2007	5352		29659
36	LABOURER	PATIL SHAILESH YASHWANT	22300		2007	5352		29659
37	LABOURER	KONDE NILESH MACHHINDRA	22300		2007	5352		29659
38	LABOURER	PAWAR NITIN TUKARAM	19700		1773	4728		26201
39	LABOURER	GIJARE SHARAD TUKARAM	19700		1773	4728		26201
40	LABOURER	KAMBARI SHYAM TUKARAM	22300		2007	5352		29659
41	LABOURER	PANSARE VASANT NAMDEV	22300		2007	5352		29659
42	LABOURER	CHIKHALE VIJAY MANOHAR	22300		2007	5352		29659
43	LABOURER	MALGAVE RAVINDRA VASUDEV	20900		1881	5016		27797
44	LABOURER	MUSALE RUPESH GOPAL	22300		2007	5352		29659
45	LABOURER	KADAM SANTOSH RAGHUNATH	21600		1944	5184		28728

46	LABOURER	VAIRAT ANIL SAVALA	19700		1773	4728		26201
47	LABOURER	KASAR GANESH JAYRAM	19700		1773	4728		26201
48	LABOURER	PATIL PRATAP ARJUN	22300		2007	5352		29659
49	LABOURER	BHIKWADE KUNDALIK P	20900		1881	5016		27797
50	LABOURER	TIKONE SANTOSH GANPAT	22300		2007	5352		29659
51	LABOURER	NAVALE NILESH BABURAO	22300		2007	5352		29659
52	LABOURER	WALIMBE SANJAY DHARMA	20300		1827	4872		26999
53	LABOURER	CHAVAN ANKUSH VISHNU	22300		2007	5352		29659
54	LABOURER	SONAR PRASHANT BALU	22300		2007	5352		29659
55	LABOURER	MHAMUNKAR PRAFUL S	23600		2124	5664		31388
56	LABOURER	MHATRE SACHIN YESHWANT	22300		2007	5352		29659
57	LABOURER	BHOSALE GEORGE PETER	22300		2007	5352		29659
58	LABOURER	JADHAV ASHOK ANANT	23600		2124	5664		31388
59	LABOURER	BAILMARE GANESH GOPAL	23600		2124	5664		31388
60	LABOURER	YEWALE RAVINDRA GOVIND	19700		1773	4728		26201
61	LABOURER	KHANVILKAR DINESH R	22300		2007	5352		29659
62	LABOURER	BHOIR SANTOSH BHASKAR	22300		2007	5352		29659

63	LABOURER	BHOJANE NIMBA GOGA	20300		1827	4872		26999
64	LABOURER	SHIRKE AMIT SHANKAR	22300		2007	5352		29659
65	LABOURER	HOUSALMAL BHAUSAHEB T	22300		2007	5352		29659
66	LABOURER	RAVAN ANKUSH SAVAJI	18300		1647	4392		24339
67	LABOURER	PAWAR SHIVAJI MANSINGH	22300		2007	5352		29659
68	LABOURER	YADAV SANTOSH ANANDRAO	18300		1647	4392		24339
69	LABOURER	ARDE KISHOR BALIRAM	18300		1647	4392		24339
70	LABOURER	KSHIRSAGAR TUSHAR T	22300		2007	5352		29659
71	LABOURER	SONAWANE SANJAY C	20300		1827	4872		26999
72	LABOURER	RATHOD YUVRAJ UNKADA	22300		2007	5352		29659
73	LABOURER	KASHIWALE SANTOSH DAMU	18300		1647	4392		24339
74	LABOURER	SHELAR KISAN GANAPAT	19700		1773	4728		26201
75	LABOURER	KHARAT RAJESH SHANKAR	22300		2007	5352		29659
76	LABOURER	RUPVATE UTTAM DAMU	21600		1944	5184		28728
77	LABOURER	DHANDAGE NARENDRA RAMDAS	21600		1944	5184		28728
78	LABOURER	DHANAWADE SUBHASH S	21600		1944	5184		28728
79	LABOURER	BHOYAR RAMCHANDRA MOHAN	21600		1944	5184		28728

80	LABOURER	DHAPATE CHANDRAKANT KALU	21600		1944	5184		28728
81	LABOURER	PATIL ANIL DATTATRAY	21600		1944	5184		28728
82	LABOURER	BANSODE MAHINDRA BODALA	20300		1827	4872		26999
83	LABOURER	DESALE RAVINDRA MAU	19700		1773	4728		26201
84	LABOURER	BHARAT RAMJI PARDESI	18500		1665	4440		24605
85	LABOURER	RAM DEEPAK BACHANI	18500		1665	4440		24605

<b>PAYSHEET NO. 4099</b>								
<b>S. No</b>	<b>Title</b>	<b>Employee Full Name</b>	<b>Pay</b>	<b>GRP</b>	<b>DA</b>	<b>HRA</b>	<b>CA</b>	<b>Total</b>
1	CHAVIWALA	BANE PRAKASH PANDURANG	40800		3672	9792		54264
2	CHAVIWALA	GAMBHIRE RAMDAS BARKU	35400		3186	8496		47082
3	CHAVIWALA	CHAPATE CHANDRAKANT J	35500		3195	8520		47215
4	SLUICEMAN	GAIKWAD VILAS SHRAVAN	36600		3294	8784		48678
5	SLUICEMAN	JADHAV SACHIN RAMDAS	38800		3492	9312		51604
6	LABOURER	JOSHI UMESH DATTARAM	37700		3393	9048		50141
7	LABOURER	PATIL NARENDRA RAGHUNATH	39800		3582	9552		52934
8	LABOURER	RANE SANTOSH SABAJI	39800		3582	9552		52934

9	LABOURER	KAMBLE RAJESH SAKHARAM	33700		3033	8088		44821
10	LABOURER	QURESHI NASIR H ABDUL B	35800		3222	8592		47614
11	LABOURER	SABLE BALU LALU			0	0		0
12	LABOURER	GALANDE APPA BHAGOJI	33200		2988	7968		44156
13	LABOURER	MULAM SANTOSH CHANDRAKANT	33200		2988	7968		44156
14	LABOURER	ADE UMESH KANTILAL	25300		2277	6072		33649
15	LABOURER	PATIL SHREEKRISHANA S	25300		2277	6072		33649
16	LABOURER	BHERE GANPAT BHAU	24300		2187	5832		32319
17	LABOURER	JADHAV KAILASH HARIBHAU	24300		2187	5832		32319
18	LABOURER	NANGARE ASHOK DAGADU	18300		1647	4392		24339
19	LABOURER	KADAM HARSHAD CHANDRAKANT	22300		2007	5352		29659
20	LABOURER	PATIL MOHAN MADHUKAR	21600		1944	5184		28728
21	LABOURER	VAZE PRAMOD	22300		2007	5352		29659
22	LABOURER	CHODHARI SUSHANT RAMESH	22300		2007	5352		29659
23	LABOURER	MAYEKAR SAHDEV SADANAND	20300		1827	4872		26999
24	LABOURER	UTEKAR ASHISH VASANT	22300		2007	5352		29659



25	LABOURER	TALEKAR UDAY SHANTARAM	22300		2007	5352		29659
26	LABOURER	SATHE PRAKASH KASHINATH	18000		1620	4320		23940
27	LABOURER	DESHMUKH SAPNA BHUJANRAO	18000		1620	4320		23940
28	LABOURER	THAKUR DATTATRAY DEU	18500		1665	4440		24605

PAYSHEET NO. 4182								
S. No	Title	Employee Full Name	Pay	GRP	DA	HRA	CA	Total
1	MUKADAM	JAGDHANE KUNDALIK J	38700		3483	9288		51471
2	MUKADAM	KADAM BALKRISHNA DEWOO	40800		3672	0		44472
3	MUKADAM	KONDKAR VIJAY CHANGAJI	40800		3672	9792		54264
4	MUKADAM	SAKPAL MILIND MANOHAR	38700		3483	9288		51471
5	MUKADAM	VAIDYA VILAS VINAYAK	40800		3672	9792		54264
6	MUKADAM	KUNCHIKORVE YANGAPPA Y	36700		3303	8808		48811
7	PLUNGERMAN	MHASKE KADUBA SONAJI	10350		931.5	2484		13765.5
8	LABOURER	BERDE RAVINDRA SAKHARAM	38700		3483	9288		51471
9	LABOURER	BHOJANE VIJAY SANTU	35600		3204	8544		47348
10	LABOURER	JADHAV ARUN RAJARAM	37700		3393	9048		50141

11	LABOURER	ANIL RAMCHANDRA BHUNESAR	18000		1620	4320		23940
12	LABOURER	JADHAV ASHOK BABURAO	36500		3285	8760		48545
13	LABOURER	KADAR NAGESH JANU	37200		3348	8928		49476
14	LABOURER	KAMBLE VIJAY GOVIND	37100		3339	8904		49343
15	LABOURER	KAMBLE VILAS VISHRAM	36100		3249	8664		48013
16	LABOURER	MODIKAR YELLAPPA LAXMAN	34700		3123	8328		46151
17	LABOURER	VIRAJ NARAYA N KADAM	16200		1458	3888		21546
18	LABOURER	SADAPHULE KACHRU D	36900		3321	8856		49077
19	LABOURER	SALVE APPA DAGDU	36900		3321	8856		49077
20	LABOURER	SORKADE DATTATRAY SOMAJI	37300		3357	8952		49609
21	LABOURER	TISMULAY NARAYAN	37400		3366	8976		49742
22	LABOURER	WAVHALE DILIP MAHIPAT	37000		3330	8880		49210
23	LABOURER	SHINDE DILEEP SHIVARAM	32000		2880	7680		42560
24	LABOURER	PATOLE SURESH KRISHNA	33100		2979	7944		44023
25	LABOURER	MHATRE TULSIDAS RAGHUNATH	33100		2979	7944		44023
26	LABOURER	PITAMBARE TUKARAM VALAKU	32000		2880	7680		42560
27	LABOURER	BAJAGE RAMESH LAHU	32000		2880	7680		42560

28	LABOURER	JADHAV SONU SIDDHARTH	15700		1413	3768		20881
29	LABOURER	MISHRA VEERPRATAP M	32000		2880	7680		42560
30	LABOURER	GAIKWAD GANESH VILAS	29200		2628	7008		38836
31	LABOURER	GAIKWAD SACHIN PRAKASH	33100		2979	7944		44023
32	LABOURER	YERUNKAR RAMAKANT D	32000		2880	7680		42560
33	LABOURER	PARAB CHANDRKANT SHIVAJI	26600		2394	6384		35378
34	LABOURER	MOHITE PRADEEP BHAGURAM	25100		2259	6024		33383
35	LABOURER	KAMBLE SUMEDH GAUTAM	25100		2259	0		27359
36	LABOURER	KAMBLE YOGESH CHANDRAKANT	25100		2259	6024		33383
37	LABOURER	DEVADE NARESH RAMESH	25100		2259	6024		33383
38	LABOURER	BIPUL HIRENDRA PAL	25100		2259	6024		33383
39	LABOURER	TAMBE VISHAL SHANTARAM	25100		2259	6024		33383
40	LABOURER	TAMBE KISHOR VITTHAL	LONG ABSENT		0	0		0
41	LABOURER	YEDAGE NANASO ANNA	24300		2187	5832		32319
42	LABOURER	PATIL SWAPNIL SUDAM	24300		2187	5832		32319
43	LABOURER	RASKAR NANDKUMAR PIRAJI	24300		2187	5832		32319

44	LABOURER	BOMBE SACHIN SUDAM	24300		2187	5832		32319
45	LABOURER	VADAVALE VAIBHAV R	24300		2187	5832		32319
46	LABOURER	MAHENDRA M KAMBLE	15700		1413	3768		20881
47	LABOURER	BHERE VISHVANATH C	24300		2187	5832		32319
48	LABOURER	SADGIR SUNIL GANGADHAR	24300		2187	5832		32319
49	LABOURER	SARNEKAR PRAFULL P	24300		2187	5832		32319
50	LABOURER	KHAIRNAR BHARAT CHUDAMAN	24300		2187	0		32319
51	LABOURER	SHELAR MUKESH BHAU	24300		2187	5832		32319
52	LABOURER	SAMBARE VANDESH SAKHARAM	24300		2187	5832		32319
53	LABOURER	PANDHARE SANTOSH HALOJI	24300		2187	5832		32319
54	LABOURER	MALI KISHOR PANDURANG	24300		2187	5832		32319
55	LABOURER	SHINDE VAIBHAV DILIP	24300		2187	5832		32319
56	LABOURER	GODE BIPIN GURUNATH	24300		2187	5832		32319
57	LABOURER	GHUGE DEEPAK WALIBA	24300		2187	5832		32319
58	LABOURER	PISE KUNAL MOHAN	24300		2187	5832		32319
59	LABOURER	PANDHARE SANJAY MADHUKAR	24300		2187	5832		32319

60	LABOURER	KUDTARKAR PRAVIN P	24300		2187	5832		32319
61	LABOURER	LONE SAGAR HARISHCHANDRA	24300		2187	5832		32319
62	LABOURER	KARDAK JOY R.	18600		1674	4464		24738
63	LABOURER	RATHOD GOKUL SHANKAR	21500		1935	5160		28595
64	LABOURER	KAKADE MAHESH BARKU	24300		2187	5832		32319
65	LABOURER	TONE BAJRANG BHIMARAO	24300		2187	5832		32319
66	LABOURER	DHAVADE VAIBHAV C	21600		1944	5184		28728
67	LABOURER	BHARATE MAYUR KRISHNAT	24300		2187	5832		32319
68	LABOURER	RAUT SACHIN DATTATRAYA	24300		2187	5832		32319
69	LABOURER	JADHAV SANTOSH YASHWANT	22900		2061	5496		30457
70	LABOURER	DHAKOL DNYANESHVAR VITHAL	20900		1881	5016		27797
71	LABOURER	DHAYAGUDE GORAKHNATH P	21600		1944	5184		28728
72	LABOURER	KAMRAJ THASRATHAN	17700		1593	4248		23541
73	LABOURER	GONDE SANTOSH MARIYAPPA	17200		1548	4128		22876
74	LABOURER	SABLE VIKAS ASHOK	16700		1503	4008		22211
75	LABOURER	SAVANE NIKHIL PREMRAJ	20300		1827	4872		26999
76	LABOURER	SALUNKHE RAKESH GANGARAM	19700		1773	4728		26201

77	LABOURER	GONDAL SANDESH SITARAM	16200		1458	3888		21546
78	LABOURER	UJAGARE DADU MHADU	37400		3366	8976		49742
79	LABOURER	PAWAR SIDDHARTH SITARAM	36100		3249	8664		48013
80	LABOURER	PATIL PRABHUDAS DAMODAR	37100		3339	8904		49343
81	LABOURER	KADAM GANPAT SAMBHAJI	35100		3159	8424		46683
82	LABOURER	OVHAL MANOJ SITARAM	37100		3339	8904		49343
83	LABOURER	MAHESH PRABHAKAR RAHANE	18000		1620	4320		23940
84	LABOURER	TEGMAL K. HINGAWE	18000		1620	4320		23940
85	LABOURER	DEVENDAR MOHAN M.	37100		3339	8904		49343
86	LABOURER	BHOSALE DHONDIBA SONAJI	37100		3339	8904		49343
87	LABOURER	AUSARMAL RAJU RAMCHANDRA	27100		2439	6504		36043
88	LABOURER	DEVLEKAR KISHOR H	37100		3339	8904		49343
89	LABOURER	KAMBLE GOUTAM VISHRAM	37100		3339	8904		49343
90	LABOURER	SALUNKE SUDHAKAR ZIMAJI	37100		3339	8904		49343
91	PLUNGERMAN	CHANDRAKANT JADHAV	37700		3393	9048		50141
92	PLUNGERMAN	BALRAM ANAND	37700		3393	9048		50141
93	PLUNGERMAN	RAVINDRA MAHADAV JADHAV	31400		2826	7536		41762

94	PLUNGERMAN	SITARAM BABAURAO SHELKE	31400		2826	7536		41762
95	PLUNGERMAN	SIDDHARTH M. PANDHARKAR	22300		2007	5352		29659
96	PLUNGERMAN	VIDHAYADHAR P DONGARKAR	37000		3330	0		40330
97	PLUNGERMAN	RAVINDRA G KAMBLE	37100		3339	0		40439

**PAYSHEET NO. 4192**

S. No	Title	Employee Full Name	Pay	GRP	DA	HRA	CA	Total
1	Mason-II	LOHAKARE PANDURANG S	38700		3483	9288		51471
2	MUKADAM	BHANGARE BHARAT SAKHARAM	38000		3420	9120		50540
3	MUKADAM	JADHAV SIDDHARTH VITHAL	39900		3591	9576		53067
4	MUKADAM	KAMBLE GOPICHAND BABU	37000		3330	8880		49210
5	MUKADAM	KAMBLE VILAS BABU	40700		3663	9768		54131
6	MUKADAM	KUNCHIKORVE SHIVCHALAPP B	38900		3501	9336		51737
7	MUKADAM	SALUNKE SHRIRANG DHONDU	39900		3591	9576		53067
8	MUKADAM	NAGESH GUNAJI KAMBLE	41200		3708	9888		54796
9	PLUNGERMAN	JADHAV MANOHAR PANDURANG	37000		3330	8880		49210
10	PLUNGERMAN	SAPUTRE RAMCHANDRA KHANDU	37300		3357	8952		49609

11	PLUNGERMAN	UBABLE MANOHAR Z	37900		3411	9096		50407
12	PLUNGERMAN	KUMBHAR SHASHIKANT N	37100		3339	8904		49343
13	PLUNGERMAN	SURESH GANPAT TAMBE	36100		3249	8664		48013
14	PLUNGERMAN	SALUNKE GUNAJI RAMCHANDRA	37100		3339	8904		49343
15	PLUNGERMAN	GHAYTADKE VILAS YAMANJI	37100		3339	8904		49343
16	PLUNGERMAN	WANKHEDE SUNIL TRIMBAK	37100		3339	8904		49343
17	PLUNGERMAN	JADHAV TIMBDAS MARTAND	37100		3339	8904		49343
18	PLUNGERMAN	JADHAV ANIL MAHADEO	37100		3339	8904		49343
19	PLUNGERMAN	SHELWADKAR ANANDA D	35800		3222	8592		47614
20	PLUNGERMAN	SAWANT PRAKASH GOVIND	37200		3348	8928		49476
21	PLUNGERMAN	PATANKAR ASHOK MAHADEO	35900		3231	8616		47747
22	PLUNGERMAN	SAWANT RAMESH SAYAPPA	37300		3357	8952		49609
23	LABOURER	BHANGARE LAXMAN BAPU	37400		3366	8976		49742
24	LABOURER	BHANDARE BABU BHIMANNA	34900		3141	8376		46417
25	LABOURER	JOSHI SUBHASH BUDHA	35700		3213	8568		47481
26	LABOURER	KOLI SANJAY ANADA	37700		3393	9048		50141
27	LABOURER	PURALKAR NARAYAN DHONDU	37300		3357	8952		49609



28	LABOURER	RATHOD VINODKUMAR P	36300		3267	8712		48279
29	LABOURER	KAMBLE DEEPAK BHAGOJI	37000		3330	8880		49210
30	LABOURER	RAJU MARIAPPA	29200		2628	7008		38836
31	LABOURER	KADVE PRAVIN LAXMAN	35800		3222	8592		47614
32	LABOURER	ZEPLE VINAYAK MAHADEO	37100		3339	8904		49343
33	LABOURER	SHAIKH MUSTAQUE MOHAMAO	36200		3258	8688		48146
34	LABOURER	PANGDANT YELLAPPA M	34800		3132	8352		48284
35	LABOURER	BHANDARE BABU BHIMANNA	34900		3141	8376		46417
36	LABOURER	GHARAT RAMESH MAHADU	33100		2979	7944		44023
37	LABOURER	HOGGE RAMESH MANGALDAS	33100		2979	7944		44023
38	LABOURER	GHARAT PRABHAKAR NAMA	33100		2979	7944		44023
39	LABOURER	PADELKAR SUGAT ATMARAM	33100		2979	7944		44023
40	LABOURER	SAWANT SANTOSH LAXMAN	33100		2979	7944		44023
41	LABOURER	KANADE VISHAL GOPICHAND	32000		2880	7680		42560
42	LABOURER	PITALEKAR ASHOK BABU	30100		2709	7224		40033
43	LABOURER	KAMBLE DAYANAND GANPAT	25900		2331	6216		34447
44	LABOURER	MORE KUNAL MANOHAR	25100		2259	6024		33383

45	LABOURER	NARKAR RAJESH RAMESH	25100		2259	6024		33383
46	LABOURER	KAMBLE AJAY GOVIND	25100		2259	6024		33383
47	LABOURER	GHARENIYA KAILAS MANGA	25100		2259	6024		33383
48	LABOURER	BAGUL HEMANT AKASH	22900		2061	5496		30457
49	LABOURER	PARMAR RAVI LAXMAN	24300		2187	5832		32319
50	LABOURER	KHANDZODE GANESH MARUTI	24300		2187	5832		32319
51	LABOURER	TERVANKAR ASHOK BABLYA	24300		2187	5832		32319
52	LABOURER	MANDVE SANGAM MAHADEV	24300		2187	5832		32319
53	LABOURER	CHORGE ANANTA BHIVA	24300		2187	5832		32319
54	LABOURER	SARGAR VASANT SOMA	24300		2187	5832		32319
55	LABOURER	SHINDE ASHOK NARAYAN	24300		2187	5832		32319
56	LABOURER	GAIKAR SAINATH GOPINATH	24300		2187	5832		32319
57	LABOURER	HARCHILKAR VIKAS RAJARAM	24300		2187	5832		32319
58	LABOURER	PATIL CHANDRAKANT SHANKAR	24300		2187	5832		32319
59	LABOURER	GORE SUDAM KASHINATH	24300		2187	5832		32319
60	LABOURER	SONGIRE SACHIN SHAMKANT	24300		2187	5832		32319
61	LABOURER	PATIL SANTOSH H	22300		2007	5352		29659

62	LABOURER	PHONDE TUKARAM KUSHABA	22300		2007	5352		29659
63	LABOURER	DAGAKE ANIL KONDIRAM	22300		2007	5352		29659
64	LABOURER	JADHAV MURALIDHAR S	22300		2007	5352		29659
65	LABOURER	PAKHARE CHETAN EKNATH	18300		1647	4392		24339
66	LABOURER	UTALE VITTHAL SHANKAR	21600		1944	5184		28728
67	LABOURER	GITE GAHININATH DHONDIBA	21600		1944	5184		28728
68	LABOURER	JADHAV KALPESH SHANTARAM	17200		1548	4128		22876
69	LABOURER	KORVEN SHIVKUMAR H	16700		1503	4008		22211
70	LABOURER	KAMBLE ROHAN BHIMSEN	20300		1827	4872		26999
71	LABOURER	KADAM RAJU BALKRISHNA	37100		3339	8904		49343
72	LABOURER	ANDHIYAR JAYARAMAN C.	37100		3339	8904		49343
73	LABOURER	KAMBLE HARI LAXMAN	37100		3339	8904		49343
74	LABOURER	GIRKAR VIJAY BHIKAJI	37100		3339	8904		49343
75	LABOURER	JADHAV ASHOK GANGARAM	37100		3339	8904		49343
76	LABOURER	MANJREKAR SUJEET SHIVRAM	37100		3339	8904		49343
77	LABOURER	T RAJU	37100		3339	8904		49343
78	LABOURER	JADHAV PRAKASH RAYA	37100		3339	8904		49343

79	LABOURER	SAKPAL BABAN RAMKRUSHNA	37200		3348	8928		49476
80	LABOURER	SAWANT PRAKASH GOVIND	37100		3339	8904		49343
81	LABOURER	JADHAV TIMBDAS MARTAND	37100		3339	8904		49343
82	LABOURER	KAMBLE VIVEK VISHRAM	37100		3339	8904		49343
83	LABOURER	IRMAL PRAKASH VISHRAM	37100		3339	8904		49343
84	LABOURER	JADHAV NARESH RAMCHANDRA	37100		3339	8904		49343
85	LABOURER	JADHAV GOVIND BAJI	37100		3339	8904		49343
86	LABOURER	JADHAV SUNIL BHAGWAT	37400		3366	8976		49742
87	LABOURER	CHAVAN SUNIL MAHADEO	37100		3339	8904		49343
88	LABOURER	DEVGADKAR ANAND SHANKAR	35600		3204	8544		47348
89	LABOURER	NAGARE SOMNATH VITTHAL	22300		2007	5352		29659
90	LABOURER	ALDAR SANGAPPA VITHOBA	22300		2007	5352		29659
91	LABOURER	LONE RAM BANGO	21600		1944	5184		28728
92	LABOURER	VISHWAKARMA RAKESH C	22300		2007	5352		29659
93	LABOURER	DARADE NAVNATH DATTATRAY	22300		2007	5352		29659
94	LABOURER	JADHAV MANISH ASHOK	19100		1719	4584		25408
95	LABOURER	PUJARI DATTATRI BABAN	18600		1674	4464		24738

96	LABOURER	SOMANI ASHISH MANOHAR	18000		1620	4320		23940
97	LABOURER	GAKHARE PANKAJ CHAMPATRAO	18000		1620	4320		23940
98	LABOURER	JADHAV VIKAS MAMRAJ	18000		1620	4320		23940

PAYSHEET NO. 2480								
S. No	Title	Employee Full Name	Pay	GRP	DA	HRA	CA	Total
1	MUKADAM	DENGDA BHANJI KANJI	38700		3483	0		42183
2	SWEEPER	JADHAV CHAYA TUKARAM	37100		3339	0		40439
3	SWEEPER	MARU VIJU ALJI	35800		3222	8592		47614
4	SWEEPER	BHALERAO ANKUSH SHANTARAM	33700		3033	8088		44821
5	SWEEPER	KAMBLE SANGEETA SANJAY	34700		3123	8328		46151
6	SWEEPER	JADHAV SUNKAVVA NAGAPPA	33200		2988	7968		44156
7	SWEEPER	DABHI CHAMPA LALJI	25900		2331	6216		34447
8	SWEEPER	JADHAV SANTOSH VITTHAL	22900		10591	2670		22161
9	SWEEPER	WAGH SHANTA MANGAL	25100		2259	6024		33383
10	SWEEPER	MAKESHA HIMMAT HIRA	22900		2061	5496		30457

11	SWEEPER	JADHAV GOVINDA KERU	25100		2259	6024		33383
12	SWEEPER	JADHAV NITIN VITTHAL	23600		2124	5664		31388
13	SWEEPER	KAMBLE SHASHIKANT BABAJI	21600		1944	5184		28728
14	SWEEPER	JITIYA GIRDHAR KHIMJI	22300		2007	5352		29659
15	SWEEPER	BABARIA VIPUL BHANJI	22300		2007	5352		29659
16	SWEEPER	PARMAR HASMUKH PREMJI	18000		1620	4320		23940
17	SWEEPER	GANGAVNE RAHUL GAUTAM	19700		1773	4728		26201
18	SWEEPER	BHINGARDIVE ASHWIN S	16200		1458	3888		21546
19	MUKADAM	KADAM VINAYAK MAHADEO	39900		3591	9576		53067
20	MUKADAM	KAMBLE VIJAY DHONDIRAM	35200		3168	8448		46816
21	MUKADAM	LAVATE SHIVAJI SHANKAR	39100		3519	9384		52003
22	MUKADAM	PAWAR PRAKASH VITHAL	38500		3465	9240		51205
23	SWEEPER	PURBIYA HIRALAL DAYA	37100		3339	8904		49343
24	SWEEPER	KASABE SHANTATAM GOPAL	29100		2619	6984		38703
25	SWEEPER	AMBOKAR RAJENDAR P	35100		3159	8424		46683
26	SWEEPER	JADHAV SUDHIR DHONDIRAM	33400		3006	8016		44422
27	SWEEPER	KAMBLE DEEPAK TUKARAM	34800		3132	8352		46284

28	SWEEPER	KOLI VISHWAS VALJIBHAI	35900		3231	8616		47747
29	SWEEPER	KOLI JIVI KALIDAS	34400		3096	8256		45752
30	SWEEPER	KAMBLE VIDYA VIJAY	34400		3096	8256		45752
31	SWEEPER	KAMBLE ASHA GANPAT	34400		3096	0		45752
32	SWEEPER	LOKHANDE SANDIP NARAYAN	36700		3303	8808		48811
33	SWEEPER	MALKOLU PARSHURAM K	31000		2790	7440		41230
34	SWEEPER	MAHIDA PUSHPA NARAYAN	34700		3123	8328		46151
35	SWEEPER	PAWAR GEETA BHIKAJI	35600		3204	8544		47348
36	SWEEPER	PARDHI SAVITA ARVIND	Long absent		0	0		0
37	SWEEPER	SUMRA VIJAY MULJI	32700		2943	7848		43491
38	SWEEPER	VADHEL DHANJI NAZA	33700		3033	8088		44821
39	SWEEPER	YELWE SUVARNA SUDESH	33400		3006	8016		44422
40	SWEEPER	KAMBLE VINOD JAIRAM	33400		3006	8016		44422
41	SWEEPER	KAMBLE SHEETAL SHASHIKANT	34200		3078	8208		45486
42	SWEEPER	MAKWANA JAYA UMAKANT	25900		2331	6216		34447
43	SWEEPER	PAWAR SACHIN RAJARAM	25900		2331	6216		34447
44	SWEEPER	SAKPAL SACHIN KRISHNA	25900		2331	6216		34447

45	SWEEPER	PAWAR NILESH GANGARAM	25900		2331	6216		34447
46	SWEEPER	KOLI MAHENDRA JAYRAM	25900		2331	6216		34447
47	SWEEPER	LAKHAN PRANITA PRABHAKAR	25900		2331	6216		34447
48	SWEEPER	YELWE PRAMILA PRAKASH	25900		2331	6216		34447
49	SWEEPER	CHAVDA BABUBHAI RAJA	25900		2331	6216		34447
50	SWEEPER	DODIA DEEPAK RAMJI	25900		2331	6216		34447
51	SWEEPER	LAKHAN GAURANGI GAUTAM	25100		2259	6024		33383
52	SWEEPER	KADAM BHIMRAO BALKRISHNA	25100		2259	6024		33383
53	SWEEPER	JADHAV RAM BABU	15700		1413	3768		20881
54	SWEEPER	JADHAV BALU KRISHNA	25100		2259	6024		33383
55	SWEEPER	JADAV MOHAN GALA	25100		2259	0		27359
56	SWEEPER	MOHITE PRAKASH SADASHIV	25100		2259	6024		33383
57	SWEEPER	KADAM SUNITA VINAYAK	25100		2259	6024		33383
58	SWEEPER	MOHITE MILIND TUKARAM	23600		2124	5664		31388
59	SWEEPER	MAKWANA MUKESH MOHAN	23600		2124	5664		31388
60	SWEEPER	JADAV DAYALAL DEVSHI	23600		2124	5664		31388
61	SWEEPER	JOGADIA MEERA DEEPAK	23600		2124	5664		31388



62	SWEEPER	YELWANKAR VANITA JITENDRA	23600		2124	5664		31388
63	SWEEPER	PADAM HARJIVAN RAMJI	23600		2124	5664		31388
64	SWEEPER	RATHOD JAYA BIPIN	23600		2124	5664		31388
65	SWEEPER	SOLANKI ARVIND ALJI	23600		2124	5664		31388
66	SWEEPER	KADAM UDAY MUKUND	23600		2124	0		25724
67	SWEEPER	MARU MADHURI JAYSING	24400		2196	5856		32452
68	SWEEPER	TAK SURENDRA RAMKISAN	22300		2007	5352		29659
69	SWEEPER	SOLANKI VINOD JAYSING	23600		2124	5664		31388
70	SWEEPER	PADAYA MUKESH BECHAR	22900		2061	5496		30457
71	SWEEPER	CHAWDA DHIRAJLAL RAJA	22900		2061	5496		30457
72	SWEEPER	RATHOD RAMESH BHOJA	22900		2061	5496		30457
73	SWEEPER	MAKWANA PRAVIN VISHRAM	22900		2061	5496		30457
74	SWEEPER	KAMBLE VAIBHAV SHIVRAM	22300		2007	5352		29659
75	SWEEPER	VELARI BHARAT DEVJI	22900		2061	5496		30457
76	SWEEPER	KAMBLE VINOD CHANDRAKANT	22300		2007	5352		29659
77	SWEEPER	SUMESARA VINOD DEVJI	17200		1548	4128		22876
78	SWEEPER	KAMBLE RAMCHANDRA G	20900		1881	5016		27797

79	SWEEPER	BORICHA HANSA ASHOK	22300		2007	5352		29659
80	SWEEPER	SAKPAL SWAPNIL PRAKASH	17200		1548	4128		22876
81	SWEEPER	BARIA RAHUL LALIT	17700		1593	0		19293
82	SWEEPER	BORICHA RAMESH NATHU	17700		1593	4248		23541
83	SWEEPER	BARIA RAJESH GOVIND	17700		1593	4248		23541
84	SWEEPER	MARCHANDE SUMEDHA SANTOSH	17700		1593	4248		23541
85	SWEEPER	THOSAR AKASH SURENDRA	20900		1881	5016		27797
86	MUKADAM	JADHAV ASHOK SAKHARAM	37400		3366	8976		49742
87	MUKADAM	JADHAV VISHWAS HARI	34800		3132	8352		46284
88	SWEEPER	JADHAV SANJAY MADHUKAR	16700		1503	4008		22211
89	SWEEPER	SOLANKI RAMESH PITHA	19100		1719	4584		25403
90	SWEEPER	GOLIPKAR SUBHASH YASHWANT	15600		1404	3744		20748
91	SWEEPER	KUNCHIKORVE SURENDRA LAXMAN	21600		1944	5184		28728
92	SWEEPER	PAWAR SHIVANI ANANT	19100		1719	0		20819
93	SWEEPER	WAGHELA POPAT MITHA	22600		2034	5424		30058
94	SWEEPER	SHINDE PRADEEP PANDURANG	15700		1413	3768		20881
95	SWEEPER	KAMBLE UJWALA SANTOSH	14800		1332	3552		19684

96	SWEEPER	GAMRE AASHISH ASHOK	14800		1332	3552		19684
97	SWEEPER	MOHITE NILESH RAJA	18000		1620	4320		23940
98	SWEEPER	KUMAR KISHOR BALLAPPA	15700		1413	3768		20881
99	SWEEPER	SOLANKI DINESH GOPALDAS	24300		2187	5832		32319
100	SWEEPER	GAMARE SUNANDA SAKHARAM	25100		2259	6024		33383
<b>PAYSHEET NO. 2481</b>								
<b>S. No</b>	<b>Title</b>	<b>Employee Full Name</b>	<b>Pay</b>	<b>GRP</b>	<b>DA</b>	<b>HRA</b>	<b>CA</b>	<b>Total</b>
1	MUKADAM	KADAM VIJAY GOPAL	38500		3465	9240		51205
2	SWEEPER	GOHIL RAMUBAI MAWJI	33700		3033	8088		44821
3	SWEEPER	JADHAV KISHOR DANJI	35600		3204	8544		47348
4	SWEEPER	WAGH GOVIND PREMJI	25900		2331	6216		34447
5	SWEEPER	CHARNIA RAMILA GANESH	25100		2259	6024		33383
6	SWEEPER	KHUMAN PRAVIN JETHA	22900		2061	5496		30457
7	SWEEPER	MARU DEEPAK JETHA	22900		2061	5496		30457
8	SWEEPER	KOLI ANIL RAMJI	22300		2007	5352		29659
9	SWEEPER	KAMBLE BHARATI SHANKAR	18100		1629	4344		24073
10	SWEEPER	KAMBLE VIKAS BHAGWAN	19700		1773	4728		26201

11	SWEEPER	DABI WALJI GIGA	34400		3096	8256		45752
12	SWEEPER	JADHAV GANESH SAKHARAM	25900		2331	6216		34447
13	SWEEPER	JADHAV SHUBRAMANI P	25100		2259	6024		33383
14	SWEEPER	JOSHI SWATI SHANKAR	17700		1593	4248		23541
15	SWEEPER	JADHAV SUDESH BHIWAJI	37100		3339	8904		49343
16	HALALKHOR	GOHIL USHABEN MAHESH	23600		2124	5664		31388
17	HAHLALKHOR	PURALKAR AMOL KESHAV	21600		1944	5184		28728
18	SWEEPER	KAMBLE SAYALI SUNIL	20300		1827	4872		26999
19	HALALKHOR	SOLANKI JAYANTILAL GOVIND	36400		3276	8736		48412
20	HALALKHOR	MAHIDA VINOD LAXMAN	18300		1647	4392		24339
21	SWEEPER	MHATRE BALU NARSAPPA	15700		1413	3768		20881
22	SWEEPER	KUMAR PRASHANT BALAPPA	19100		1719	4584		25403
23	SWEEPER	PARMAR ARYAN LALIT	18000		1620	4320		23940
24	SWEEPER	PAWAR LAVESH DEEPAK	18000		1620	4320		23940
25	J.O	RAMILA DHARIYA	25600		2304	6144		34048

**PAYSHEET NO. 2482**

<b>S. No</b>	<b>Title</b>	<b>Employee Full Name</b>	<b>Pay</b>	<b>GRP</b>	<b>DA</b>	<b>HRA</b>	<b>CA</b>	<b>Total</b>
1	SWEEPER	DULGACH PRAKASH B	37100		3339	8904		49343
2	SWEEPER	BABRIYA RAMESH DEVSHI	34400		3096	8256		45752
3	SWEEPER	JADHAV SURESH RAMCHANDRA	34400		3096	8256		45752
4	SWEEPER	JADHAV PREMILA TRIKAM	34200		3078	8208		45486
5	SWEEPER	DHAMANKAR SANGEETA VIJAY	35900		3231	8616		47747
6	SWEEPER	KHUMAN KANTI LAXMAN	35600		3204	8544		47348
7	SWEEPER	PARMAR SAVITA KESHAV	34800		3132	8352		46284
8	SWEEPER	WAGHELA MAHENDRA BECHAR	33700		3033	8088		44821
9	SWEEPER	CHAVARIYA RAJENDRA ARUN	22300		0	5352		27652
10	SWEEPER	JADHAV SUNANDA BARKYA	34400		3096	8256		45752
11	SWEEPER	JADHAV SANDIP RAMCHANDRA	25900		2331	6216		34447
12	SWEEPER	JADHAV VISHAL DHONDU	25100		2259	6024		33383
13	SWEEPER	PAWAR GAUTAM KESHAV	25100		2259	6024		33383
14	SWEEPER	KAMBLE SUGANDHA VIKAS	25100		2259	6024		33383
15	SWEEPER	SAKPAL BHAGYAVAN Y	25100		2259	6024		33383

16	SWEEPER	KAMBLE SURSEN RAJARAM	22200		1998	5328		29526
17	SWEEPER	TAMBE NARENDRA RAMCHANDRA	23600		2124	5664		31388
18	SWEEPER	KAMBLE TUSHAR SHRIDHAR	23600		2124	5664		31388
19	SWEEPER	ADE SANDESH MARUTI	23600		2124	5664		31388
20	SWEEPER	PADAYA NEETA SHAMJI	22900		2061	5496		30457
21	SWEEPER	PAWAR SURESH PANDURANG	22300		2007	5352		29659
22	SWEEPER	BABARIA CHETAN JAYANTI	20900		1881	5016		27797
23	SWEEPER	JOGADIYA SUSHILA DAYA	16200		1458	3888		21546
24	SWEEPER	KHUMAN MANJULA RAMAN	19700		1773	4728		26201
25	SWEEPER	HEDAMBA USHA HIRJI	34400		3096	8256		45752
26	SWEEPER	WADHEL PREMJI NARAYAN	25900		2331	6216		34447
27	SWEEPER	KHUMAN JAYA MAHENDRA	25900		2331	6216		34447
28	SWEEPER	DHARIA LAXMI JETHA	25900		2331	6216		34447
29	SWEEPER	PAWAR PRADEEP BHIKAJI	35600		3204	8544		47348
30	SWEEPER	WAGH RAKESH RAMESH	22300		2007	5352		29659

**PAYSHEET NO. 2474**

<b>S. No</b>	<b>Title</b>	<b>Employee Full Name</b>	<b>Pay</b>	<b>GRP</b>	<b>DA</b>	<b>HRA</b>	<b>CA</b>	<b>Total</b>
1	Mason II	Borade Dhondiba Ashruba	38400	0	3456	9216		51072
2	Mason II	Dangat Dilip Nakul	28200	0	2538	6768		37506
3	mukadam	Kamble Laxman Pandurang	39300	0	3537	0		42837
4	mukadam	Mohite Sharad Dharmanand	38000	0	3420	9120		50540
5	mukadam	Koktare Ramchandra Goga	37700	0	3393	9048		50141
6	Labourer	Yellappa Hasnappa	29000	0	2610	6960		38570
7	Labourer	Parmar Jaising Mafa	38300	0	3447	9192		50939
8	Labourer	Bhimappa Yellappa	37400	0	3366	8976		49742
9	Labourer	Mandve Sakharam Keshav	40000	0	3600	9600		53200
10	Labourer	Kunchikorve Kajanna Janappa	36900	0	3321	8856		49077
11	Labourer	Kunchikorve Mariappa G.	35800	0	3222	8592		47614
12	Labourer	Kadare Ramesh Hanumanta	39600	0	3564	9504		52668
13	Labourer	Yellappa Satyappa	33700	0	3033	8088		44821
14	Labourer	Vaidi Rama Bhima	36500	0	3285	8760		48545
15	Labourer	Unde Vasant ramchandra	39000	0	3510	9360		51870
16	Labourer	Bhangare Shankar Thaka	38500	0	3465	9240		51205
17	Labourer	Ubhe Vijay Krishna	37700	0	3393	9048		50141
18	Labourer	Tatale Ekanath Yeshwant	37700	0	3393	9048		50141
19	Labourer	Gadekar Sanjay Maruti	36300	0	3267	8712		48279
20	Labourer	Sarje Rajendra Baban	39000	0	3510	9360		51870
21	Labourer	Awari Sampat Ywshwant	37700	0	3393	9048		50141

22	Labourer	Ware Devram Vithal	39000	0	3510	9360		51870
23	Labourer	Kharwa Raman Wari	32800	0	2952	7872		43624
24	Labourer	Pawar Deepak Arjun	37100	0	3339	8904		49343
25	Labourer	Dhavade Subhash Tukaram	37100	0	3339	8904		49343
26	Labourer	Raorane Jivendra Sudhakar	35800	0	3222	8592		47614
27	Labourer	Salve Babasaheb Uttam	36400	0	3276	8736		48412
28	Labourer	Mhomed Rafiq	34400	0	3096	8256		45752
29	Labourer	Mainuddin Abdul Ajj	37100	0	3339	8904		49343
30	Labourer	Shitole Ashok Sopan	37100	0	3339	8904		49343
31	Labourer	Jadhav Prakash Hari	35800	0	3222	8592		47614
32	Labourer	Shinde Chandrakant Jayram	37100	0	3339	8904		49343
33	Labourer	Panchal Anand Kashiram	35300	0	3177	8472		46949
34	Labourer	Gavhale Naresh Krishna	33100	0	2979	7944		44023
35	Labourer	Ghotakar Prakash Narayan	33100	0	2979	7944		44023
36	Labourer	Bhoir Kisan Bango	33100	0	2979	7944		44023
37	Labourer	Bhoir Ramakant Atmaram	33100	0	2979	7944		44023
38	Labourer	Bhoir Maruti Shankar	33100	0	2979	7944		44023
39	Labourer	Shaikh Juber Mominkadar	30100	0	2709	7224		40033
40	Labourer	Hariyan Rajesh Keshav	33100	0	2979	7944		44023
41	Labourer	Gaikwad Raju Kashinath	33100	0	2979	7944		44023
42	Labourer	Bhandari Bhupesh Maruti	33100	0	2979	7944		44023
43	Labourer	Chaudhari Abhimanyu Savalaram	33100	0	2979	7944		44023
44	Labourer	Palkar Santosh Shantaram	33100	0	2979	7944		44023
45	Labourer	Sakpal Santosh Shantaram	25400	0	2286	6096		33782



46	Labourer	Kamble Sanjev Damodar	25900	0	2331	6216		34447
47	Labourer	Jadhav Nilesh Narayan	25100	0	2259	6024		33383
48	Labourer	Jadhav Rahul Gautam	26100	0	2349	6264		34713
49	Labourer	Khandagale Ashok Shivdas	25900	0	2331	6216		34447
50	Labourer	Maniyar Javed Kallu	25100	0	2259	6024		33383
51	Labourer	Bhejwal Nandlal Chandrapal	25100	0	2259	6024		33383
52	Labourer	Chavan Vinod Shivram	25100	0	2259	6024		33383
53	Labourer	Bhandare Sunil Sampatti	25100	0	2259	6024		33383
54	Labourer	Jadhav Deepak Pandurang	25100	0	2259	6024		33383
55	Labourer	Bodake Ramchandra Sitaram	24300	0	2187	5832		32319
56	Labourer	Jadhav Rajendra Gajanan	22900	0	2061	5496		30457
57	Labourer	Yele Subhash Bhagawat	24300	0	2187	5832		32319
58	Labourer	Minde Yogesh Dagadu	24300	0	2187	5832		32319
59	Labourer	Dicholkar Sandeep Vijay	24300	0	2187	5832		32319
60	Labourer	Nadekar Uttam Shivram	24300	0	2187	5832		32319
61	Labourer	Khandare Bhaskar Narayan	24300	0	2187	5832		32319
62	Labourer	Jadhav Vijay Nau	24300	0	2187	5832		32319
63	Labourer	Patil Mahadev Balkrishna	24300	0	2187	5832		32319
64	Labourer	Jadhav Rohan Devendra	22900	0	2061	5496		30457
65	Labourer	Bapardekar Vilas Tukaram	22300	0	2007	5352		29659
66	Labourer	Pujari Parshuram Timappa	18300	0	1647	4392		24339
67	Labourer	Rawale Pravin Prafull	22300	0	2007	5352		29659
68	Labourer	Ghodvinde Vilas Lahu	20300	0	1827	4872		26999
69	Labourer	Metakari Rajendra Dnyanu	18300	0	1647	4392		24339

70	Labourer	Palave Santosh Arjun	22300	0	2007	5352		29659
71	Labourer	Koli Arun Sadashiv	22300	0	2007	5352		29659
72	Labourer	Sangale Dinesh Mahadu	18300	0	1647	4392		24339
73	Labourer	Rathod Nitin Sawairam	22300	0	2007	5352		29659
74	Labourer	Gosavi Jayendra Mahadev	22300	0	2007	5352		29659
75	Labourer	Dhumak Vaibhav Rajaram	20900	0	1881	5016		27797
76	Labourer	Patil Tejesh vishnu	19700	0	1773	4728		26201
77	Labourer	Ningam Anandkumar Manikappa	19100	0	1719	4584		25403
78	Labourer	Khond Mahadve Madhukar	18600	0	1674	4464		24738
79	Labourer	Jadhav kishor Jayramsing	18600	0	1674	4464		24738
80	Labourer	Dabhade shyam Babu	14800	0	1332	3552		19684
81	Labourer	More Kaustubh Dnyaneshwar	18000	0	1620	4320		23940
82	Labourer	Undalkar Akshay Sitaram	18000	0	1620	4320		23940
83	Labourer	Valera Amrut shamji	18000	0	1620	4320		23940
84	Halalkhor	Solanki Suresh Keshwalal	37700	0	3393	0		41093

**PAYSHEET NO. 2475**

S. No	Title	Employee Full Name	Pay	GRP	DA	HRA	CA	Total
1	MasonII	Mandhavle Haibati Tukaram	40000	0	3600	9600		53200
2	Mistry II	Gawari Waman Mahadu	38000	0	3420	9120		50540
3	Mistry II	Mukane Manohar Vanaji	36300	0	3267	8712		48279
4	CarpenterII	Jadhav Suryakant Ragho	41400	0	3726	0		45126

5	Mukadam	Prabhulkar Hamid Adam	40200	0	3618	9648		53466
6	Mukadam	Bobade Iqbal Isaque	38400	0	3456	9216		51072
7	Mukadam	Yadav Ramesh Dhondiram	38900	0	3501	9336		51737
8	Labourer	Kanekar Tushar Shamsunder	39000	0	3510	0		42510
9	Labourer	Sipri Bhimappa Gangaram	37900	0	3411	9096		50407
10	Labourer	Kunchikurve Shunakppa B.	36500	0	3285	8760		48545
11	Labourer	Rathod Pravin Ramji	35800	0	3222	8592		47614
12	Labourer	Kamble Rajan Sidling	28200	0	2538	6768		37506
13	Labourer	Palsamkar Ramchandra B.	41300	0	3717	9912		54929
14	Labourer	Mariappa Janappa	37400	0	3366	8976		49742
15	Labourer	Medawara Mangaldas P.	40900	0	3681	9816		54397
16	Labourer	Satyappa Yenkappa	38300	0	3447	9192		50939
17	Labourer	Kamble Ramchandra Arjun	37700	0	3393	9048		50141
18	Labourer	Kamble BalaLaxman	37400	0	3366	8976		49742
19	Labourer	Bhosle Anant Hari	40000	0	3600	9600		53200
20	Labourer	Kunchikurve Rajesh Y.	37400	0	3366	8976		49742

21	Labourer	Londhe Vilas Ankush	37500	0	3375	9000		49875
22	Labourer	Armugam Palniappa D.	36900	0	3321	8856		49077
23	Labourer	Bankar Prabhakar Kashinat	38700	0	3483	9288		51471
24	Labourer	Chawan Bhimrao Masaji	36200	0	3258	8688		48146
25	Labourer	Kunchikurve Suresh Y.	37600	0	3384	9024		50008
26	Labourer	Sidam Arun Keshav	36500	0	3285	8760		48545
27	Labourer	Kamble Raju kondiram	39800	0	3582	9552		52934
28	Labourer	Kunchikurve Yellappa	31800	0	2862	7632		42294
29	Labourer	Kamble Sidharth Dhondiram	37500	0	3375	9000		49875
30	Labourer	Sellakkanna Karpanna	36200	0	3258	8688		48146
31	Labourer	Dhotre Gajanan Bhagwan	38800	0	3492	9312		51604
32	Labourer	Panchal Mahesh Babu	37500	0	3375	9000		49875
33	Labourer	Raorane Nandraj Bhikaji	37100	0	3339	8904		49343
34	Labourer	Talekar Suresh Luka	37100	0	3339	8904		49343
35	Labourer	Petkar Navnath Haribhau	37100	0	3339	8904		49343
36	Labourer	Buchude Kailas Babu	37100	0	3339	8904		49343
37	Labourer	Jadhav Nagsen Namdeo	35000	0	3150	8400		46550

38	Labourer	Kamble Prakash Vishram	37100	0	3339	8904		49343
39	Labourer	Dhende Baban Chimaji	37100	0	3339	8904		49343
40	Labourer	Pawar sanjay Sitaram	35300	0	3177	8472		46949
41	Labourer	Patil Muralidhar Ladaku	33100	0	2979	7944		44023
42	Labourer	shelake Raju Pandurang	33100	0	2979	7944		44023
43	Labourer	Mandre Rajesh Kisan	33100	0	2979	7944		44023
44	Labourer	kamble Kishor Khanderao	33100	0	2979	7944		44023
45	Labourer	Jadhav Bhadrasen Gharu	33100	0	2979	7944		44023
46	Labourer	Chaugule Sandip Suresh	27600	0	2484	6624		36708
47	Labourer	Bhatkar Tushar Vilas	24600	0	2214	5904		32718
48	Labourer	Shejwal Sanjay ananda	26800	0	2412	6432		35644
49	Labourer	Ruke Abhay Ashok	22300	0	2007	5352		29659
50	Labourer	Kadam Mansing Bhagwan	25100	0	2259	6024		33383
51	Labourer	Sonawane Arjun Yallappa	25100	0	2259	6024		33383
52	Labourer	Subayyabada GangappaA.	25100	0	2259	6024		33383
53	Labourer	Sawade Vijay Bandu	25100	0	2259	6024		33383
54	Labourer	Bhadgaonkar Sushant S.	25100	0	2259	0		27359

55	Labourer	Jadhav Shrikant C.	25100	0	2259	6024		33383
56	Labourer	Sabale Nilesh Ashok	24300	0	2187	5832		32319
57	Labourer	Hulule DyaneshwarN.	24300	0	2187	5832		32319
58	Labourer	Raut Mahesh Krishna	24300	0	2187	5832		32319
59	Labourer	Gaikar Rupesh Gurunath	24300	0	2187	5832		32319
60	Labourer	Gharat Ratnakar Damu	24300	0	2187	5832		32319
61	Labourer	Gage Rajaram Ramchandra	24300	0	2187	5832		32319
62	Labourer	Thakare Vishanu Bhau	24300	0	2187	5832		32319
63	Labourer	Patil sushilkumar Damodar	24300	0	2187	5832		32319
64	Labourer	Dalvi Sachin Gopinath	24300	0	2187	5832		32319
65	Labourer	Patil Santosh Laxman	24100	0	2169	5784		32053
66	Labourer	Marathe Santosh Hari	25100	0	2259	6024		33383
67	Labourer	Yadav Baban Nivruti	23600	0	2124	5664		31388
68	Labourer	Selvikumari Kuppuswami	23600	0	2124	5664		31388
69	Labourer	Jadhav Aruna Ghanashyam	23600	0	2124	5664		31388
70	Labourer	Girkar Pravin Ganpat	22300	0	2007	5352		29659
71	Labourer	Sutar Deepesh Krishnappa	22900	0	2061	5496		30457

72	Labourer	Raja Kuttipayan	22900	0	2061	5496		30457
73	Labourer	Sanap Bhaskar Shivaji	22300	0	2007	5352		29659
74	Labourer	Aldar Bharat Kondiba	20900	0	1881	5016		27797
75	Labourer	Rathod Suresh Eknath	22300	0	2007	5352		29659
76	Labourer	Koli Shrikant Shamrao	22300	0	2007	5352		29659
77	Labourer	Sarvankar Nathuram Dinkar	22300	0	2007	5352		29659
78	Labourer	Sargar Santosh Tukaram	22300	0	2007	5352		29659
79	Labourer	Waman Vijay Damodar	22300	0	2007	5352		29659
80	Labourer	Satote Gajanan Dayaram	22300	0	2007	5352		29659
81	Labourer	Chavre Naresh Vasudeo	22300	0	2007	5352		29659
82	Labourer	Dhopavkar Prathamesh P.	21600	0	1944	5184		28728
83	Labourer	Kalpund Ashish Shrirang	20300	0	1827	4872		26999
84	Labourer	Sable Dattatray Babu	18600	0	1674	4464		24738
85	Labourer	Kadam Sachin madhukar	18600	0	1674	4464		24738
86	Labourer	Marade Jayesh Tukaram	18600	0	1674	4464		24738
87	Labourer	Gaikwad Sachin Sham	18000	0	1620	4320		23940
88	Labourer	Katkhade Santosh Rama	18000	0	1620	4320		23940

**PAYSHEET NO. 2476**

<b>S. No</b>	<b>Title</b>	<b>Employee Full Name</b>	<b>Pay</b>	<b>GRP</b>	<b>DA</b>	<b>HRA</b>	<b>CA</b>	<b>Total</b>
1	Plumber I	Kamble Bhagwan Godya	42800	0	3852	10272		56924
2	Mason II	Kunchikorve Naresh Ganpat	38600	0	3474	9264		51338
3	Mason II	Sivanna Gundappa	41000	0	3690	9840		54530
4	Carpenter II	Kasare Sudhir Yeshwant	37000	0	3330	8880		49210
5	Fitter III	Gosavi Nandkishor Narayan	39200	0	3528	9408		52136
6	Mistry II	Gavankar Sameer Narayan	26900	0	2421	6456		35777
7	Labourer	Sakpal Dinesh Pandurang	36100	0	3249	8664		48013
8	Labourer	Sable Pramod Ratan	26700	0	2403	6408		35511
9	Labourer	Nare Vishnoo Shridhar	40900	0	3681	9816		54397
10	Labourer	Shinde Jagannath Sakharam	41300	0	3717	9912		54929
11	Labourer	Waghari Kishor Bhika	36900	0	3321	8856		49077
12	Liftman	Ghatye Mangesh Babaji	37800	0	3402	0		41202
13	Labourer	Solanki Kiran Kamlesh	27200	0	2448	6528		36176



14	Labourer	Bairollu Vipul Ramloo	39000	0	3510	9360		51870
15	Labourer	Bhore Yallappa Manik	38600	0	3474	9264		51338
16	Labourer	Wayal Ramesh Maruti	35700	0	3213	8568		47481
17	Labourer	Khandagale Popat Premji	38800	0	3492	9312		51604
18	Labourer	Nalband Mohd, Sadiq A. K.	38800	0	3492	0		42292
19	Labourer	Mohite Sambhaji Shivram	37100	0	3339	8904		49343
20	Labourer	Magdum Ramdas Bhiwa	37100	0	3339	8904		49343
21	Labourer	Desai Mahendra Raghunath	37100	0	3339	8904		49343
22	Labourer	Logade Nandkumar Shivram	37100	0	3339	8904		49343
23	Labourer	Jadhav Gunaji Tanu	32800	0	2952	0		35752
24	Labourer	Harchirkar Ismail A R	37100	0	3339	8904		49343
25	Labourer	Jadhav Suryasen Dhaku	37100	0	3339	8904		49343
26	Labourer	Mumbarkar Subhash Rawji	35300	0	3177	0		38477
27	Labourer	Jadhav Arun Gunaji	37000	0	3330	8880		49210
28	Labourer	Mondkar Vilas Anant	37100	0	3339	8904		49343
29	Liftman	Shelke Ajit Anant	36100	0	3249	8664		48013
30	Labourer	Waykar Kishor Kondaji	36000	0	3240	8640		47880

31	Labourer	Jadhav Santosh Dattaram	36000	0	3240	8640		47880
32	Labourer	Chavan Naresh Vasudeo	30800	0	2772	7392		40964
33	Labourer	Jadhav Santosh Ramchandra	25000	0	2250	6000		33250
34	Labourer	Zimal Umesh Dhondiram	35600	0	3204	8544		47348
35	Labourer	Gawade Eknath Dattatraya	34500	0	3105	8280		45885
36	Labourer	Tare Raman Ratan	33100	0	2979	7944		44023
37	Labourer	Patil Namdeo Ganpat	33100	0	2979	7944		44023
38	Labourer	Raut Pandurang Dattatray	32100	0	2889	7704		42693
39	Labourer	Adivarekar Divakar M	33100	0	2979	7944		44023
40	Labourer	Dhopare Ramesh Mahadeo	32100	0	2889	7704		42693
41	Labourer	Gharat Chandrakant T	33100	0	2979	7944		44023
42	Labourer	Sarang Vinay Kashinath	33100	0	2979	7944		44023
43	Labourer	Dhubhele Dattu Vitthal	33100	0	2979	7944		44023
44	Labourer	Bhangare Shivram Shankar	27600	0	2484	6624		36708
45	Labourer	Chavan Sachin Vasudeo	33100	0	2979	0		36079
46	Labourer	Kangane Dilip Ranchandra	32000	0	2880	7680		42560
47	Labourer	Mahapadi Yashwant S	33100	0	2979	7944		44023

48	Labourer	Pawar Dinesh Mallappa	33100	0	2979	7944		44023
49	Labourer	Kamble Rahul Ramji	26800	0	2412	0		29212
50	Labourer	Jadhav Sanjay Dhondu	25900	0	2331	6216		34447
51	Labourer	Kokane Ganesh Shankar	25900	0	2331	6216		34447
52	Labourer	Barve Deepak Hari	26800	0	2412	6432		35644
53	Labourer	Boricha Rajesh Ramji	24300	0	2187	5832		32319
54	Labourer	Misal Suresh Mahadev	24300	0	2187	5832		32319
55	Labourer	Gorad Dattatray Jagannath	24300	0	2187	5832		32319
56	Labourer	Adhikari Jaywant R	24300	0	2187	5832		32319
57	Labourer	Talekar Vilas Luka	24300	0	2187	5832		32319
58	Labourer	Bodake Tanaji Dhondiba	24300	0	2187	5832		32319
59	Labourer	Patil Subhash Haribhau	24300	0	2187	5832		32319
60	Labourer	Kamble Dinesh Hari	24300	0	2187	5832		32319
61	Labourer	Tade Raju Shivaji	24300	0	2187	5832		32319
62	Labourer	Kamble Ramesh Jagannath	24300	0	2187	5832		32319
63	Labourer	Jadhav Jaydas Yashwant	24300	0	2187	5832		32319
64	Labourer	Patil Harishchandra M	24300	0	2187	5832		32319

65	Labourer	Jadhav Kiran Govind	20900	0	1881	5016		27797
66	Labourer	Kamble Dayanand Jagannath	24300	0	2187	5832		32319
67	Labourer	Sakpal Ajit Anant	23600	0	2124	0		25724
68	Labourer	Wavhal Akshay Vijay	21500	0	1935	5160		28595
69	Labourer	Bhurke Sandeep Manohar	22300	0	2007	5352		29659
70	Labourer	Tambe Abhishek Ulhas	16700	0	1503	4008		22211
71	Labourer	Meher Deepak Ganpat	18300	0	1647	4392		24339
72	Labourer	Ghode Avinash Tukaram	21600	0	1944	5184		28728
73	Labourer	Rathod Gajanan Bondiram	19700	0	1773	4728		26201
74	Labourer	Kharwa Umesh Govind	10974	0	987.66	2633.76		14595.42
75	Labourer	Tare Manoj Sudhakar	19700	0	1773	4728		26201
76	Labourer	Mankar Nayan Suresh	19700	0	1773	4728		26201
77	Labourer	Kalekar Kaushik Pralhad	19700	0	1773	4728		26201
78	Labourer	Darvitkar Mahesh Sakharam	16200	0	1458	3888		21546
79	Labourer	Mahadev Subhash Varadkar	18600	0	1674	4464		24738
80	Labourer	Vishal Eknath Patil	18600	0	1674	4464		24738
81	Labourer	Arjun Ramtirtha Nishad	15300	0	1377	3672		20349

82	Labourer	Jagruti Suresh Deshmukh	18600	0	1674	4464		24738
83	Electrician I	Jadhav Santosh Ravindra	37000	0	3330	8880		49210
84	Electrician I	More Prakash Mahadev	44300	0	3987	10632		58919
85	Wireman I	Lokhande Ankush Baburao	40000	0	3600	9600		53200
86	Wireman II	Mondkar Mahesh Mahadeo	38800	0	3492	9312		51604
87	Wireman III	Ayub Adam Parbulkar	38800	0	3492	9312		51604
88	Labourer	Raju Somnath Wayal	24300	0	2187	5832		32319
89	Labourer	Sarode Khandeshwar Maroti	18000	0	1620	4320		23940
90	Labourer	Dantani Anup Lilachand	14800	0	1332	3552		19684
91	Labourer	Sagar Bhaurao Sonawane	18000	0	1620	4320		23940

<b>PAYSHEET NO. 2508</b>								
<b>S. No</b>	<b>Title</b>	<b>Employee Full Name</b>	<b>Pay</b>	<b>GRP</b>	<b>DA</b>	<b>HRA</b>	<b>CA</b>	<b>Total</b>
1	Sweeper	Jambhure Rama Genu	33700	0	3033	8088		44821
2	Sweeper	Pagare Ranjana Baban	33400	0	3006	8016		44422
3	Sweeper	Khuman Poonam Jesing	18000	0	1620	4320		23940
4	Sweeper	Makwana Ashok Jethalal	17200	0	1548	4128		22876

5	Sweeper	Baria Shila Hemu	20900	0	1881	5016		27797
6	Sweeper	Sosa Rajniben Khimji	23600	0	2124	5664		31388
7	Sweeper-cum-Halalkhor	Solanki Yogesh Suresh	18000	0	1620	4320		23940
8	Sweeper-cum-Halalkhor	Rajani Bhanji Wala	22300	0	2007	5352		29659
9	Sweeper-cum-Halalkhor	Chauhan Mukesh Ramjibhai	17200	0	1548	4128		22876
10	Sweeper-cum-Halalkhor	Parmar Rita Jitendra	18600	0	1674	4464		24738

PAYSHEET NO. 2477								
S. No	Title	Employee Full Name	Pay	GRP	DA	HRA	CA	Total
1	Labourer	VIJAY SHIVRAM KAMBLE	38300	0	3447	9192		50939
2	Carpenter I	VIJAY MARUTI WALVATKAR	40900	0	3681	9816		54397
3	Mistry I	RAJARAM NIVRUTTI AWARI	39300	0	3537	9432		52269
4	Painter II	BUDHAJI BANDU MANCHEKAR	41000	0	3690	9840		54530
5	Painter II	KHANDU SAKHARAM GAWARI	39900	0	3591	9576		53067
6	Painter II	SURESH DHONDIRAM DHENGALE	39000	0	3510	9360		51870
7	Painter II	DAWOOD USMAN NAIK	37100	0	3339	8904		49343

8	Plumber II	RAJKUMAR BALWANT KALE	38400	0	3456	9216		51072
9	Plumber II	ANANT PANDURANG KARANJEKAR	38200	0	3438	9168		50806
10	Plumber II	ANANTA DHAVALA DHADWAD	41500	0	3735	9960		55195
11	Plumber II	KISHOR PRABHU RATHOD	39300	0	3537	9432		52269
12	Plumber II	MAHAENDRA BHASKAR SURVE	38400	0	3456	9216		51072
13	Mason II	KISAN NAMDEO BANGER	37600	0	3384	9024		50008
14	Mason II	BHOSALE RAVINDRA NARAYAN	38400	0	3456	9216		51072
15	Mason II	CHAWAN PRASHANT ANNA	33300	0	2997	7992		44289
16	Mistry II	BHADRIKE BHARAT VITHAL	39000	0	3510	9360		51870
17	Mistry II	DHOTRE ANANDA BHAGAWAN	37300	0	3357	8952		49609
18	Mistry II	DILIP B. TAKALE	41300	0	3717	9912		54929
19	Mistry II	WAGH SHANTARAM SHANKAR	39000	0	3510	9360		51870
20	Mistry II	TAMBE GAUTAM DHARMA	41200	0	3708	9888		54796
21	Carpenter II	KAMBLE RAJENDRA YASHWANT	38600	0	3474	0		42074
22	Carpenter II	JADHAV SANDESH RAMESH	39900	0	3591	9576		53067
23	Carpenter II	DIWATE GANESH SHIVJI	33300	0	2997	7992		44289
24	Carpenter II	PATIL SAMEER SUDHAKAR	33300	0	2997	7992		44289

25	Fitter II	APARADH UDAY VITHAL	40000	0	3600	9600		53200
26	Labourer	KAMBLE RAMESH BHAGOJI	34000	0	3060	0		37060
27	Labourer	KUDTARKAR PRABHAKAR B.	35800	0	3222	8592		47614
28	Labourer	PARMARE GULAMHUSEIM ABDUL	37300	0	3357	8952		49609
29	Labourer	GOBAR BHIKA	37400	0	3366	8976		49742
30	Labourer	RATOD NANJI SHAMJI SHAMJI	40000	0	3600	9600		53200
31	Labourer	KUNCHIKOR SHAM YELLAPPA	36900	0	3321	8856		49077
32	Labourer	KUNCHIKORVE KAJANNA B.	36900	0	3321	8856		49077
33	Labourer	JADHAV BABU SAYBU	36900	0	3321	8856		49077
34	Labourer	DAWARE JALIDAR KASHINATH	39000	0	3510	9360		51870
35	Labourer	LIMJE SUDHIR BALKRISHNA	35400	0	3186	8496		47082
36	Labourer	GODE VILAS YASHWANT	39800	0	3582	9552		52934
37	Labourer	SANGAN PERNALSARD D.	36200	0	3258	8688		48146
38	Labourer	SAPUTRE RAMBHAU KISAN	38800	0	3492	9312		51604
39	Labourer	GAIKWAD UTTAM BANSILAL	38800	0	3492	9312		51604
40	Labourer	GAIKWAD DAYANAND GULAB	38800	0	3492	9312		51604
41	Labourer	KAMBLE VILAS SAKHARAM	38800	0	3492	9312		51604



42	Labourer	SANGARE GANESH BABU	38800	0	3492	9312		51604
43	Labourer	JADHAV DAYANAND SAYAJI	37000	0	3330	8880		49210
44	Labourer	SALVI BHARAT RAMA	37100	0	3339	8904		49343
45	Labourer	PATEL PRAVINBHAI SOMABHAI	37100	0	3339	8904		49343
46	Labourer	ANSARI MOHD MUBASHIRUL H.	31000	0	2790	7440		41230
47	Labourer	MADHAVI ANANTA DINANATH	27000	0	2430	6480		35910
48	Labourer	JADHAV NANDKUMAR DAMU	33100	0	2979	7944		44023
49	Labourer	MISHRA VINAYKUMAR A.	33100	0	2979	7944		44023
50	Labourer	CHAVAN SUNIL ANKUSH	33100	0	2979	7944		44023
51	Labourer	MOHD RAFIQ ABDUL GURAIISHI	33100	0	2979	7944		44023
52	Labourer	GULVI PAVAN KISAN	33100	0	2979	7944		44023
53	Labourer	THAKUR JAYANT PRABHAKAR	32000	0	2880	7680		42560
54	Labourer	BAHENWAL RAJKUMAR MANGAL	33100	0	2979	7944		44023
55	Labourer	KADAM PRASHANT LAKSHMAN	28000	0	2520	6720		37240
56	Labourer	SARATHE SHASHIMOHAN S.	33100	0	2979	7944		44023
57	Labourer	BANSODE DEEPAK BABAN	27600	0	2484	6624		36708
58	Labourer	VENGURLEKAR PRADEEP J.	27400	0	2466	6576		36442

59	Labourer	JAGDALE GANESH DAULAT	21600	0	1944	5184		28728
60	Labourer	BAIRAGI CHANDAN L.	25900	0	2331	6216		34447
61	Labourer	KAMBLE ARUN LAXIMAN	26800	0	2412	6432		35644
62	Labourer	BHELEKAR SHEKHAR KISHOR	25100	0	2259	6024		33383
63	Labourer	NAR AMAR DAGHARTH	20900	0	1881	5016		27797
64	Labourer	KAMBLE SHAILESH ANANT	24300	0	2187	5832		32319
65	Labourer	JADHAV GORAKSHNATH B.	24300	0	2187	5832		32319
66	Labourer	GHARAT VILAS SHANTARAM	24300	0	2187	5832		32319
67	Labourer	PATIL SUMIT BHASKAR	24300	0	2187	5832		32319
68	Labourer	SHELAR JAYAWANT KRISHNA	24300	0	2187	5832		32319
69	Labourer	JADHAV VILAS BALU	24300	0	2187	5832		32319
70	Labourer	SAROKTE SANDIP DHONDU	24300	0	2187	5832		32319
71	Labourer	HINDOLA MANOHAR CHAHU	24300	0	2187	5832		32319
72	Labourer	GAMBHIRE SANJAY DAGADU	24300	0	2187	5832		32319
73	Labourer	KATKAREE BABAN KRISHNA	24300	0	2187	5832		32319
74	Labourer	THIGALE YUVRAJ MARUTI	24300	0	2187	5832		32319
75	Labourer	SURVE AMOL GOPAL	24300	0	2187	5832		32319

76	Labourer	SHINDE SHANTARAM SRIPATI	24300	0	2187	5832		32319
77	Labourer	CHUEDASAMA MUKESH K.	24300	0	2187	5832		32319
78	Labourer	KARANKALE PRADIP BHIMRAO	24300	0	2187	5832		32319
79	Labourer	PATIL DINESH GANPAT	24300	0	2187	5832		32319
80	Labourer	BHOIR KISHOR SITARAM	24300	0	2187	5832		32319
81	Labourer	PATIL AMOL JAYRAM	23600	0	2124	5664		31388
82	Labourer	BODRE VAIBHAV KISHOR	18000	0	1620	4320		23940
83	Labourer	KAMBLE PRASHANT C.	22300	0	2007	5352		29659
84	Labourer	TADAVI FEROS NAMDAR	22300	0	2007	5352		29659
85	Labourer	KALE MANOHAR NARAYAN	22300	0	2007	5352		29659
86	Labourer	MAHAGAONKAR RAKESH ASHOK	22300	0	2007	5352		29659
87	Labourer	JADHAV NITIN HARI	22300	0	2007	5352		29659
88	Labourer	PATIL MANOJ LALCHAND	22300	0	2007	5352		29659
89	Labourer	SHINDE SANTOSH SONU	22300	0	2007	5352		29659
90	Labourer	PALVE ASHOK BHAU	18300	0	1647	4392		24339
91	Labourer	GUJAR TUKARAM JANARDAN	22300	0	2007	5352		29659
92	Labourer	MADANE ANANDRAO DAJI	22300	0	2007	5352		29659

93	Labourer	PAVASKAR AMOL KASHINATH	20300	0	1827	4872		26999
94	Labourer	GODE PRADIP RAMCHANDRA	20300	0	1827	4872		26999
95	Labourer	GHATUL ASHOK GANGARAM	21600	0	1944	5184		28728
96	Labourer	KENDRE HANMANT VINAUAKRAO	21600	0	1944	5184		28728
97	Labourer	KAULE BALU HARI	17700	0	1593	4248		23541
98	Labourer	KOLI YOGESH HIRAMAN	21600	0	1944	5184		28728
99	Labourer	PATIL VISHAL MADHUKAR	19700	0	1773	4728		26201
100	Labourer	NIRPURTE YATISH JAGANNATH	1970	0	177.3	472.8		2620.1
101	Labourer	BHANDARY RAJU SABANNA	19100	0	1719	4584		25403
102	Labourer	ADE RAVINDRA NARSING	18600	0	1674	4464		24738
103	Labourer	MANE PRITAM TANAGI	18000	0	1620	4320		23940
104	Labourer	BHOGALE DIGAMBAR RAVJI	18000	0	1620	4320		23940
105	Labourer	FAKKAD PRAKASH JAN	14800	0	1332	3552		19684
106	Labourer	GUTTE KRISHNA RAMESH	18000	0	1620	4320		23940
107	Labourer	SAWANT RUPESH SANJIV	14800	0	1332	3552		19684
108	Labourer	MURUDKAR GIRISH BABURAO	24300	0	2187	5832		32319

**PAYSHEET NO. 2478**

<b>Sr. No.</b>	<b>Title</b>	<b>Employee Full Name</b>	<b>Sex</b>	<b>Employee Code</b>	<b>Designation of employee</b>	<b>Email</b>	<b>Post</b>
1	WO ESTATE E	JATHAR SUNITA KRISHNAKANT	FEMALE	1291465	HEAD CLERK		
2	WO ESTATE E	AMBEKAR GEETA UDAY	FEMALE	3560220	HEAD CLERK		
3	WO ESTATE E	HADAWALE BABAN VITHAL	MALE	3413892	HEAD CLERK		
4	WO ESTATE E	PINAKIN SHRIRANG MAYEKAR	MALE	3983944	CLERK		
5	WO ESTATE E	GAMBHIRE RAGHUNATH NAMDEO	MALE	4027249	CLERK		
6	WO ESTATE E	VALANJU RAKESH ANANT	MALE	4126818	CLERK		
7	WO ESTATE E	BHORTAKE KAVITA BHANUDAS	FEMALE	4196697	CLERK		
8	WO ESTATE E	SHINDE SUCHITA SACHIN	FEMALE	4196707	CLERK		
9	WO ESTATE E	SABLE ANIL BAHIRU	MALE	4196714	CLERK		
10	WO ESTATE E	SAWANT RAJESH BABAN	MALE	4348504	CLERK		
11	WO ESTATE E	GADRE MINAL MADANMOHAN	FEMALE	4348511	CLERK		
12	WO ESTATE E	JADHAV PRAVIN SHIVAJI	MALE	4348690	CLERK		

13	WO ESTATE E	DHON SATYAWAN MAHADEO	MALE	4156792	CLERK		
14	WO ESTATE E	PANGALE PRAKASH JANU	MALE	4258429	CLERK		
15	WO ESTATE E	KHAIRNAR KETAN BHAGWAN	MALE	4394835	JUNIOR ENGINEER		
16	WO ESTATE E	KASHTA RAJARAM GANPAT	MALE	3347832	RENT SUPERVISOR		
17	WO ESTATE E	MHASKE SACHIN CHANDRAKANT	MALE	4015697	RENT SUPERVISOR		
18	WO ESTATE E	BIRWADKAR SANJAY RAMCHANDRA	MALE	3856235	RENT SUPERVISOR		
19	WO ESTATE E	GONDKE GANESH ANAND	MALE	4057989	RENT SUPERVISOR		
20	WO ESTATE E	GHIGE SANDIP KRUSHNA	MALE	4019945	RENT SUPERVISOR		
21	WO ESTATE E	SHAIKH MOHAMMED FAROOQUE	MALE	3899731	CHAWL SUPDT		
22	WO ESTATE E	WAGHMARE KIRAN RAMCHANDRA	MALE	4121325	RENT COLLECTOR		
23	WO ESTATE E	SHINDE SANTOSH KRISHNA	MALE	1698763	RENT COLLECTOR		
24	WO ESTATE E	SURVE PRAMOD DASHRATH	MALE	3702594	RENT COLLECTOR		
25	WO ESTATE E	MOHITE ANKUSH YASHWANT	MALE	3869606	RENT COLLECTOR		
26	WO ESTATE E	RATHOD DAIYABHAI BHIKABHAI	MALE	3198485	RENT COLLECTOR		

27	WO ESTATE E	AMBETKAR ANIL CHANDU	MALE	1008494	RENT COLLECTOR		
28	WO ESTATE E	LIMJE RAMESH M.	MALE	3739372	RENT COLLECTOR		
29	WO ESTATE E	VADHER BHAVESH KIRANKUMAR	MALE	4272269	PEON		
30	WO ESTATE E	KANGANE SUNIL SITARAM	MALE	3905270	PEON		
31	WO ESTATE E	BAGUL MAYUR ABASAHEB	MALE	4512194	PEON		
32	WO ESTATE E	JADHAV SURAJ DATTATRAY	MALE	4530725	PEON		
33	WO ESTATE E	GHADSHI GAURI SANJAY	MALE	4228253	PEON		
34	WO ESTATE E	SUNITA ANNASAHEB MOTE	FEMALE	4055530	PEON		
35	WO ESTATE E	JADHAV AKANKSHA ANANT	FEMALE	4296724	JUNIOR OVERSEAR		
36	WO ESTATE E	SARWADE SUNIL BHANUDAS	MALE	3941614	CLERK		
37	WO ESTATE E	DAGRE DIGAMBAR RAJARAM	MALE	3674815	COLONY OFFICER		
38	WO ESTATE E	MORE CHANDRAKANT APPA	MALE	1368299	RENT COLLECTOR		

**PAYSHEET NO. 4161**

<b>S.No</b>	<b>Title</b>	<b>Employee Full Name</b>	<b>Sex</b>	<b>Employee Code</b>	<b>Designation of employee</b>	<b>Email</b>	<b>Post</b>
1	AEWW E	RATHOD VILAS SHIVAJI	MALE	1745445	SUB ENGINEER		
2	AEWW E	ANSARI ABDUL HAQ	MALE	3691225	SUB ENGINEER		
3	AEWW E	PEKHLE SANKET NAMDEO	MALE	1745706	SUB ENGINEER		
4	AEWW E	DORUGADE SACHIN RAMCHADRA	MALE	1709915	SUB ENGINEER		
5	AEWW E	NICHITE SUNIL BALU	MALE	3942062	METER SUPVR		
6	AEWW E	BHISE VISHWANATH	MALE	1055489	METER SUPVR		
7	AEWW E	KULKARNI SUREKHA SANDIP	FEMALE	3347296	HEAD CLERK		
8	AEWW E	VASAVE MOGARA RAISING	FEMALE	1701395	CLERK		
9	AEWW E	CHAUKEKAR DHANANJAY D.	MALE	4062541	CLERK		
10	AEWW E	RATHOD AASHISH GULAB	MALE	4455037	CLERK		



11	AEWW E	OMBASE SAYALI BALIRAM	FEMALE	4461085	CLERK		
12	AEWW E	LOKHANDE SUDESH GANPAT	MALE	3889600	METER INSPECTOR		
13	AEWW E	MEDHE SUDHAKAR SUKHRAM	MALE	1355835	METER INSPECTOR		
14	AEWW E	BHURE PRAVINKUMAR TUKARAM	MALE	1745469	JR ENGINEER		
15	AEWW E	KUMBHAR RAHUL BALASAHEB	MALE	1738726	JR ENGINEER		
16	AEWW E	NAGMODE CHANDRAKANT BABAN	MALE	1743986	JR ENGINEER		
17	AEWW E	SHINDE VISHWAMBHAR P.	MALE	1743993	JR ENGINEER		
18	AEWW E	PATIL DATTA P.	MALE	1674301	JR ENGINEER		
19	AEWW E	PARSEKAR SANTOSH VASUDEO	MALE	1433571	PEON		
20	AEWW E	TARE LAXMI BHANUDAS	FEMALE	1739772	PEON		

**PAYSHEET 4161**

<b>SR. NO.</b>	<b>Designation</b>	<b>Name of the Officers/ Employees</b>	<b>Cadre</b>	<b>Dt. Of Joining the post</b>	<b>Dt. of joining in E Ward</b>	<b>Contact Details Ph/Fax/ E-mail</b>
1	SUB ENGINEER	RATHOD VILAS SHIVAJI	B	10.12.2015	-	022-3741401
2	SUB ENGINEER	ANSARI ABDUL HAQ	B	16.01.1992	-	022-3741401
3	SUB ENGINEER	PEKHLE SANKET NAMDEO	B	11.02.2016	11.02.2016	022-3741401
4	SUB ENGINEER	DORUGADE SACHIN RAMCHADRA	B	09.03.2019	09.03.2019	022-3741401
5	METER SUPVR	NICHITE SUNIL BALU	C	16.06.2000	03.09.2018	022-3741401
6	METER SUPVR	BHISE VISHWANATH	C	-	01.04.2017	022-3741401
7	HEAD CLERK	KULKARNI SUREKHA SANDIP	C	22.07.1985	12.09.2014	022-3741401
8	CLERK	VASAVE MOGARA RAISING	C	04.07.2008	04.07.2008	022-3741401
9	CLERK	CHAUKEKAR DHANANJAY D.	C	01.07.2006	16.11.2011	022-3741401
10	CLERK	RATHOD AASHISH GULAB	C	21.01.2015	21.01.2015	022-3741401
11	CLERK	OMBASE SAYALI BALIRAM	C	06.04.2015	15.04.2015	022-3741401
12	METER INSPECTOR	LOKHANDE SUDESH GANPAT	C	-	01.09.2019	022-3741401
13	METER INSPECTOR	MEDHE SUDHAKAR SUKHRAM	C	01.02.1993	11.09.2018	022-3741401
14	JR ENGINEER	BHURE PRAVINKUMAR TUKARAM	C	14.12.2015	17.12.2015	022-3741401
15	JR ENGINEER	KUMBHAR RAHUL BALASAHEB	C	26.06.2013	01.07.2013	022-3741401
16	JR ENGINEER	NAGMODE CHANDRAKANT BABAN	C	01.12.2015	04.12.2015	022-3741401
17	JR ENGINEER	SHINDE VISHWAMBHAR P.	C	04.12.2015	04.12.2015	022-3741401
18	JR ENGINEER	PATIL DATTA P.	C	-	01.04.2019	022-3741401
19	PEON	PARSEKAR SANTOSH VASUDEO	D	03.05.1986	03.05.1986	022-3741401
20	PEON	TARE LAXMI BHANUDAS	D	24.06.2014	06.03.2018	022-3741401

PAYSHEET NO. 2478								
S. No	Title	Employee Full Name	Pay	GRP	DA	HRA	CA	Total
1	HEAD CLERK	JATHAR SUNITA KRISHNAKANT	74200	0	6678	17808	0	98686
2	HEAD CLERK	AMBEKAR GEETA UDAY	56300	0	5067	13512	0	74879
3	HEAD CLERK	HADAWALE BABAN VITHAL	70800	0	6372	16992	0	94164
4	CLERK	PINAKIN SHRIRANG MAYEKAR	35600	0	3204	8544	0	47348
5	CLERK	GAMBHIRE RAGHUNATH NAMDEO	29600	0	2664	7104	0	39368
6	CLERK	VALANJU RAKESH ANANT	29800	0	2682	7152	0	39634
7	CLERK	BHORTAKE KAVITA BHANUDAS	32200	0	2898	7728	0	42826
8	CLERK	SHINDE SUCHITA SACHIN	32200	0	2898	7728	0	42826
9	CLERK	SABLE ANIL BAHIRU	29200	0	2628	7008	0	38836
10	CLERK	SAWANT RAJESH BABAN	26100	0	2349	6264	0	34713
11	CLERK	GADRE MINAL MADANMOHAN	28600	0	2574	6864	0	38038
12	CLERK	JADHAV PRAVIN SHIVAJI	26900	0	2421	6456	0	35867
13	CLERK	DHON SATYAWAN MAHADEO	25600	0	2304	6144	0	34048
14	CLERK	PANGALE PRAKASH JANU	24200	0	2178	5808	0	32186
15	JR ENGINNER	KHAIRNAR KETAN BHAGWAN	43000	0	3870	10320	463	57653

16	RENT SUPERVISOR	KASHTE RAJARAM GANPAT	57900	0	5211	13896	238	77245
17	RENT SUPERVISOR	MHASKE SACHIN CHANDRAKANT						
18	RENT SUPERVISOR	BIRWADKAR SANJAY RAMCHANDRA	56300	0	5067	13512	463	75342
19	RENT SUPERVISOR	GONDKE GANESH ANAND	41000	0	3690	9840	463	54993
20	RENT SUPERVISOR	GHIGE SANDIP KRUSHNA	44700	0	4023	10728	463	59914
21	CHAWL SUPERITENDANT	SHAIKH MOHAMMED FAROOQUE	42300	0	3807	10152	463	56722
22	RENT COLLECTOR	WAGHMARE KIRAN RAMCHANDRA	29800	0	2682	7152	463	40097
23	RENT COLLECTOR	SHINDE SANTOSH KRISHNA	25600	0	2304	6144	463	34511
24	RENT COLLECTOR	SURVE PRAMOD DASHRATH	39700	0	3573	9528	463	53264
25	RENT COLLECTOR	MOHITE ANKUSH YASHWANT	41200	0	3708	9888	463	55259
26	RENT COLLECTOR	RATHOD DAIYABHAI BHIKABHAI	58200	0	5238	13968	463	77869
27	RENT COLLECTOR	AMBETKAR ANIL CHANDU	45700	0	4113	10968	463	61244
28	RENT COLLECTOR	LIMJE RAMESH M.	42000	0	3780	10080	463	56323
29	PEON	VADHER BHAVESH KIRANKUMAR	24100	0	2169	5784	0	32053

30	PEON	KANGANE SUNIL SITARAM	35800	0	3222	8592	0	47614
31	PEON	BAGUL MAYUR ABASAHEB	19500	0	1755	4680	0	25935
32	PEON	JADHAV SURAJ DATTATRAY	19500	0	1755	4680	0	25935
33	PEON	GHADSHI GAURI SANJAY	24800	0	2232	5952	0	32984

PAYSHEET NO. 4161								
S. No	Title	Employee Full Name	Pay	GRP	DA	HRA	CA	Total
1	SUB ENGINEER	RATHOD VILAS SHIVAJI	48200	0	4338	11568	463	64569
2	SUB ENGINEER	ANSARI ABDUL HAQ	73100	0	6579	17544	463	97686
3	SUB ENGINEER	PEKHLE SANKET NAMDEO	46800	0	4212	11232	463	62707
4	SUB ENGINEER	DORUGADE SACHIN RAMCHADRA	50800	0	4572	12192	463	68027
5	METER SUPERVISOR	NICHITE SUNIL BALU	47300	0	4257	11352	463	63372
6	METER SUPERVISOR	BHISE VISHWANATH	64300	0	5787	15432	463	85982
7	HEAD CLERK	KULKARNI SUREKHA SANDIP	63500	0	5715	15240	0	84455
8	CLERK	VASAVE MOGARA RAISING	29400	0	2646	7056	0	39102

9	CLERK	CHAUKEKAR DHANANJAY D.	28900	0	2601	6936	0	38437
10	CLERK	RATHOD AASHISH GULAB	23800	0	2142	5712	0	31654
11	CLERK	OMBASE SAYALI BALIRAM	23800	0	2142	5712	0	31654
12	METER INSPECTOR	LOKHANDE SUDESH GANPAT	43600	0	3924	10464	463	58914
13	METER INSPECTOR	MEDHE SUDHAKAR SUKHRAM	48700	0	4383	11688	463	65697
14	JUNIOR ENGINEER	BHURE PRAVINKUMAR TUKARAM	40500	0	3645	9720	463	54328
15	JUNIOR ENGINEER	KUMBHAR RAHUL BALASAHEB	40500	0	3645	9720	463	54328
16	JUNIOR ENGINEER	NAGMODE CHANDRAKANT BABAN	40500	0	3645	9720	463	54328
17	JUNIOR ENGINEER	SHINDE VISHWAMBHAR P.	40500	0	3645	9720	463	54328
18	JUNIOR ENGINEER	PATIL DATTA P.	34700	0	3123	8328	463	46614
19	PEON	PARSEKAR SANTOSH VASUDEO	38900	0	3501	9336	0	51737
20	PEON	TARE LAXMI BHANUDAS	16800	0	1512	4032	0	22344

PAYSHEET NO. 4185								
S. No	Title	Employee Full Name	Pay	GRP	DA	HRA	CA	Total
1	HEAD CLERK	MUNGEKAR SAMIKSHA SATISH	61400	0	5526	14736	0	81662
2	JR ENGINEER	KATGAONKAR AMOL B	43000	0	3870	10320	463	57653
3	CLERK	DESAI HIMMAT DATTATRAY	31200	0	2808	7488	0	41496
4	CLERK	YADAV RAMAKBAL S	33500	0	3015	8040	0	44555
5	CLERK	TIWARI PRIYANK BABULAT	22500	0	2025	5400	0	29925
6	CLERK	MANE RAGHUNATH RAMCHANDRA	28400	0	2556	6816	0	37772
7	DRAINAGE ASST	JADHAV RAJAN BHAGURAM	36900	0	3321	8856	463	49540
8	DRAINAGE ASST	TEMBHE GANESH SADASHIV	25600	0	2304	6144	463	34511
9	DRAINAGE ASST	DARADE RAMKRISHNA PANDURANG	24300	0	2187	5832	463	32782
10	DRAINAGE ASST	JADHAV KIRAN BABARAO	24300	0	2187	5832	463	32782
11	DRAINAGE ASST	PATANKAR SANDIP KRISHNARAO	38700	0	3483	9288	463	51934

**PAYSHEET NO. 2485**

<b>S.No</b>	<b>title</b>	<b>Employee Full Name</b>	<b>Sex</b>	<b>Employee Code</b>	<b>Designation of employee*</b>	<b>Email</b>	<b>Post</b>
1	MOH E MED SAN	SHAIENDRA GUJAR	MALE	4211857	MEDICAL OFFICER		
2	MOH E MED SAN	KIRAN V. KENY	MALE	3794300	MEDICAL OFFICER		
3	MOH E MED SAN	PRIYA BHUPAL DEOKAR	FEMALE	4494429	A.M.O.		
4	MOH E MED SAN	SHARAD KAILASH TIWARI	MALE	4503576	A.M.O.		
5	MOH E MED SAN	AJAYKUMAR SUDHAKAR DHAKANE	MALE	4399445	A.M.O.		
6	MOH E MED SAN	SINGH VIKAS DEVENDRA	MALE	4394828	A.M.O.		
7	MOH E MED SAN	KRANTIKUMAR MADHAVKUMAR NAVANDIKAR	MALE	4498454	A.M.O.		
8	MOH E MED SAN	ATUL ANAND PRAMOD	MALE	4498485	A.M.O.		
9	MOH E MED SAN	SURENDRA PANDHARINATH KOLAMKAR	MALE	3360059	SR.SANITARY INSP		
10	MOH E MED SAN	GHAGARE MEERA BALURAO	FEMALE	38021880	CLERK		



11	MOH E MED SAN	DHONE NAGESH ATMARAM	MALE	4167817	CLERK		
12	MOH E MED SAN	KAMBLE PRAKASH RATNU	MALE	1268296	CLERK		
13	MOH E MED SAN	MORE SWATI SURESH	FEMALE	4167831	CLERK		
14	MOH E MED SAN	DALVI YOGITA BHIKAJI	FEMALE	4167878	CLERK		
15	MOH E MED SAN	BONDARDE KRISHNA VASANT	MALE	3609842	SANITARY INSPECT		
16	MOH E MED SAN	DHOPTTE JAGDISH KASHIRAM	MALE	3609732	SANITARY INSPECT		
17	MOH E MED SAN	KAZI JAVED JAFAR	MALE	3395945	SANITARY INSPECT		
18	MOH E MED SAN	PAWAR MAHESH ATMARAM	MALE	3578311	SANITARY INSPECT		
19	MOH E MED SAN	GHAVRIYA SHIVKUMAR NANUSING	MALE	3782002	SANITARY INSPECT		
20	MOH E MED SAN	SANDEEP DATTARAM SURVE	MALE	3599543	SANITARY INSPECT		
21	MOH E MED SAN	BHAWARI EKNATH SAKHARAM	MALE	3601978	SANITARY INSPECT		
22	MOH E MED SAN	KAMBLE DEEPAK KAMALAKAR	MALE	1264096	DEATH REG. KARKN E		

23	MOH E MED SAN	PAWADE VITTHAL YASHWANT	MALE	1451937	DEATH REG. KARKN E		
24	MOH E MED SAN	ALI MOHAMMED ABDUL AZIZ	MALE	3331262	DEATH REG. KARKN E		
25	MOH E MED SAN	SAYED FIRAZ SAYED AHMED	MALE	3423868	DEATH REG. KARKN E		
26	MOH E MED SAN	TAMBITKAR SANJAY KISAN	MALE	3793608	DEATH REG KARKN E		
27	MOH E MED SAN	DHARADE NAVNATH KHANDU	MALE	376006	KAR BIRTH REG.E		
28	MOH E MED SAN	GAWADE PRASHANT GURUNATH	MALE	3900141	KAR BIRTH REG. E		
29	MOH E MED SAN	SURVE VILAS SHALIGRAM	MALE	3638316	KAR BIRTH REG. E		
30	MOH E MED SAN	GAIKWAD RAJENDRA GHANSHYAM	MALE	3841628	KAR BIRTH REG. E		
31	MOH E MED SAN	CHAVAN DILIP SHIVRAM	MALE	3982125	KAR BIRTH REG. E		
32	MOH E MED SAN	PARADKAR SANJAY NARAYAN	MALE	3785342	KAR BIRTH REG. E		
33	MOH E MED SAN	SAVALLA VYAKATAYYA BALYYA	MALE	3451238	KAR BIRTH REG. E		
34	MOH E MED SAN	ROKADE KAILAS NAMDEO	MALE	3590104	KAR BIRTH REG. E		

35	MOH E MED SAN	JADHAV SUNIL HARIBHAU	MALE	3427604	NOTICE KARKOON		
36	MOH E MED SAN	PATEL SUNIL WAGHJI	MALE	3471995	PEON		
37	MOH E MED SAN	SHEVADE AVINASH NARAYAN	MALE	3796302	PEON		
38	MOH E MED SAN	NADEKAR SATYABHAMA SUNIL	FEMALE	4137500	PEON		
39	MOH E MED SAN	MARU ANJU JAISINGH	FEMALE	4399469	PEON		
40	MOH E MED SAN	TAPASE VAISHALI SUDHIR	FEMALE	4399469	PEON		
41	MOH E MED SAN	MUNDHE VIJAY LAXMAN	MALE	3983748	LABOUR		
42	MOH E MED SAN	TALPADE KRISHANA PANDURANG	MALE	4333368	LABOUR		
43	MOH E MED SAN	PEDNEKAR SAGAR SHANKAR	MALE	3874031	DSINFTG SB INSP		
44	MOH E MED SAN	SAWANT RAVINDRA SHANKAR	MALE	3568819	DSINFTG LABR.		
45	MOH E MED SAN	SALVI CHANDRAKANT S.	MALE	4144487	DSINFTG LABR.		
46	MOH E MED SAN	DHUMAL MANISH TUKARAM	MALE	4313436	DSINFTG LABR.		

47	MOH E MED SAN	DAGALE BHARAT KHANDU	MALE	4333423	DSINFTG LABR.		
48	MOH E MED SAN	BHOMATE MANOJ GANPAT	MALE	4402709	DSINFTG LABR.		
49	MOH E MED SAN	NARAYANKAR LAXMAN GOVIND	MALE	4498461	CEMETERY ATT.		
50	MOH E MED SAN	SAKPAL RAMESH TULSIRAM	MALE	3574094	CEMETERY ATT.		
51	MOH E MED SAN	POWAR AMOL SHIVAJI	MALE	4565161	CEMETERY ATT.		
52	MOH E MED SAN	SADGIR MARTAND BABURAO	MALE	4567541	CEMETERY ATT.		
53	MOH E MED SAN	KAMBLE JITENDRA DADU	MALE	4141130	CEMETERY ATT.		

<b>Sr no</b>	<b>Designation</b>	<b>Name of employees</b>	<b>Cadre</b>	<b>Date of joining post</b>	<b>Date of joining e ward</b>	<b>Contact details</b>
1	MEDICAL OFFICER	GUJAR SHAILENDRA	A	02/02/2009	07/06/2019	23081474
2	MEDICAL OFFICER	KENY KIRAN	B	24/05/1995	20/10/2018	23081474
3	A.M.O.	DEOKAR PRIYA BHUPAL	B	--	--	23081474
4	A.M.O.	TIWARI SHARAD KAILASH	B	11/11/2016	--	23081474
5	A.M.O.	NAVANDIKAR KRANTIKAMAR MADHAVRAO	B	20/07/2016	16/08/2018	23081474
6	A.M.O.	SINGH VIKAS DEVENDRA	B	23/07/13	23/07/13	23081474
7	SR.SANITARY INSP	KOLAMKAR SURENDRA PANDHARINATH	B	15/04/1985	07/05/2018	23081474
8	CLERK	MORE SWATI SURESH	C	07/08/08	07/08/08	23081474
9	CLERK	KAMBLE PRAKASH RATNU	C	20/07/1984	09/05/2018	23081474
10	CLERK	DALVI YOGITA BHIKAJI	C	02/07/2008	02/07/2008	23081474
11	CLERK	DHONE NAGESH ATMARAO	C	08/07/2008	08/07/2008	23081474
12	CLERK	GHAGARE MEERA BALURAO	C	01/09/1995	08/06/2009	23081474
14	SANITARY INSPECT	GHAVRIYA SHIVKUMAR NANUSING	C	06/11/81	16/05/15	23081474
15	SANITARY INSPECT	SURVE SANDEEP	C	--	--	23081474

17	SANITARY INSPECT	KAZI JAVED JAFAR	C	03/04/1987	--	23081474
18	SANITARY INSPECT	PAWAR MAHESH ATMARAM	C	02/11/1989	31/12/2016	23081474
19	SANITARY INSPECT	DHOPATE JAGDISH KASHIRAM	C	06/12/1990	28/06/2018	23081474
20	SANITARY INSPECT	BHAWARI EKNATH SAKHARAM	C	--	09/06/2015	23081474
21	SANITARY INSPECT	BONDARDE KRISHNA VASANT	C	--	--	23081474
22	DEATH REG. KARKN E	KAMBLE DEEPAK KAMALAKAR	D	01/10/1991	01/10/1991	23081474
23	DEATH REG. KARKN E	PAWADE VITTHAL YASHWANT	D	15/12/1992	16/06/2010	23081474
24	DEATH REG. KARKN E	TAMBITKAR SANJAY KISAN	D	07/05/1993	07/07/2016	23081474
25	DEATH REG. KARKN E	SAYED FIRAZ SAYED AHMED	D	07/05/1987	27/03/2012	23081474
26	DEATH REG KARKN E	ALI MOHD. ABDUL AZIZ	D	14/01/1985	27/02/2012	23081474
27	KAR BIRTH REG.	PARADKAR SANJAY NARAYAN	D	13/04/1994	01/04/2019	23081474
28	KAR BIRTH REG.(TP) E	GAIKWAD RAJENDRA GHANSHYAM	D	01/09/1995	06/09/2018	23081474

29	KAR BIRTH REG. E	SURVE VILAS SHALIGRAM	D	01/06/1991	22/03/2019	23081474
30	KAR BIRTH REG. E	GAWADE PRASHANT GURUNATH	D	19/01/1998	01/04/2019	23081474
31	KAR BIRTH REG. E	DHARADE NAVNATH KHANDU	D	07/01/1994	09/04/2019	23081474
32	KAR BIRTH REG. E	CHAVAN DILIP SHIVRAM	D	19/09/2013	19/09/2013	23081474
33	KAR BIRTH REG. E	KALAM GAJANAN PADMAKAR	D	03/06/2008	09/09/2014	23081474
34	NOTICE KARKOON	JADHAV SUNIL HARIBHAU	D	023/06/1987	09/02/2011	23081474
35	PEON	PATEL SUNIL WAGHJI	D	21/08/1967	19/07/2012	23081474
36	PEON	SHEVADE AVINASH NARAYAN	D	20-06-1995	07-08-1995	23081474
37	PEON	NADEKAR SATYABHAMA SUNIL	D	22/10/2007	22/10/2007	23081474
38	PEON	MARU ANJU JAISINGH	D	05/09/2013	05/09/2013	23081474
39	PEON	TAPASE VAISHALI SUDHIR	D	10/06/2014	10/06/2014	23081474
40	A.M.O.	DHAKANE AJAYKUMAR S.	B	26/08/2013	26/08/2013	23081474
41	A.M.O.	PRAMOD ATUL ANAND	B	21/07/2016		23081474
42	LABOUR	MUNDHE VIJAY LAXMAN	D	02/04/2005	10.04.2019	23081474
43	LABOUR	TALPADE KRISHNA	D	29.12.2011	23.03.2019	23081474

		PANDURANG				
44	DSINFTG SB INSP	PEDNEKAR SAGAR SHANKAR	D	01/09/1995	31/05/2013	23081474
45	DSINFTG LABR.	SAWANT RAVINDRA SHANKAR	D	01/07/1989	15/04/2015	23081474
46	DSINFTG LABR.	SALVI CHANDRAKANT S.	D	01/08/2005	15/04/2015	23081474
47	DSINFTG LABR.	DHUMAL MANISH TUKARAM	D	18/10/2011	15/04/2015	23081474
48	DSINFTG LABR.	DAGALE BHARAT KHANDU	D	15/12/2011	16/04/2015	23081474
49	DSINFTG LABR.	BHOMATE MANOJ GANPAT	D	19/09/2013	19/09/2013	23081474
50	CEMETERY ATT.	NARAYANKAR LAXMAN GOVIND	D	28/06/2016	28/06/2016	23081474
51	CEMETERY ATT.	KAMBLE JITENDRA DADU	D	01/04/2005	18/03/2019	23081474
52	CEMETERY ATT.	POWAR AMOL SHIVAJI	D	24/01/2019	25/01/2019	23081474
53	CEMETERY ATT.	SADGIR MARTAND DADU	D	08/03/2019	16/03/2019	23081474
54	CEMETERY ATT.	SAKPAL RAMESH TULSIRAM	D	09/01/1990	06/04/2019	23081474



PAYSHEET NO. 4185								
S. No	Title	Employee Full Name	Pay	GRP	DA	HRA	CA	Total
1	MEDICAL OFFICER	GUJAR SHAILENDRA	70500		8566	16920		95986
2	MEDICAL OFFICER	KENY KENY	104500		9405	25080		138985
3	A.M.O.	DEOKAR PRIYA	54200		4878	13008		72086
4	A.M.O.	TIWARI SHARAD	54200		4878	13008		72086
5	A.M.O.	DHAKANE AJAYKUMAR	59300		5337	14232		78869
6	A.M.O.	SINGH VIKAS DEVENDRA	59300		7205	14232		80737
7	A.M.O.	NAVANDIKAR KRANTIKUMAR MADHAVRAO	54200		6585	13008		73793
8	A.M.O.	PRAMOD ATUL ANAND	54200		6585	13008		73793
9	SR.SANITARY INSP	KOLAMKAR SURENDRA PANDHARINATH	61300		5517	14712		81529
10	CLERK	GHAGARE MEERA BALURAO	43400		3906	10416		57722
11	CLERK	KAMBLE PRAKASH RATNU	46300		4167	11112		61579
12	CLERK	DHONE NAGESH ATMARAM	30300		2727	7272		40299
13	CLERK	MORE SWATI SURESH	31200		2808	7488		41496
14	CLERK	DALVI YOGITA BHIKAJI	31200		2808	7488		41496

15	SANITARY INSPECT	DHOPTTE JAGDISH KASHIRAM	48200		4338	11568		64106
16	SANITARY INSPECT	GHAVRIYA SHIVKUMAR NANUSING	41100		3699	9864		54663
17	SANITARY INSPECT	SURVE SANDEEP	49600		4464	11904		65968
18	SANITARY INSPECT	KAZI JAVED JAFAR	48100		4329	11544		63973
19	SANITARY INSPECT	PAWAR MAHESH ATMARAM	49900		4491	11976		66367
20	SANITARY INSPECT	BONDARDE KRISHNA VASANT	49300		4437	11832		65569
21	SANITARY INSPECT	BHAWARI EKNATH SAKHARAM	42600		3834	10224		56658
22	BIRTH DEATH R KA	PARADKAR SANJAY NARAYAN	37500		3375	9000		49875
23	BIRTH DEATH R KA	SAVALLA VYAKATAYYA	40300		3627	9672		53599
24	BIRTH DEATH R KA	CHAVAN DILIP SHIVRAM	33300		2997	7992		44289
25	BIRTH DEATH R KA	SURVE VILAS SHALIGRAM	38500		3465	9240		51205
26	BIRTH DEATH R KA	ROKADE KAILASH NAMDEO	39800		3582	9552		52934
27	KAR BIRTH REG. E	GAIKWAD RAJENDRA GHANSHYAM	36900		3321	8856		49077
28	KAR BIRTH REG. E	GAWADE PRASHANT	35500		3195	8520		47215

29	KAR BIRTH REG. E	DHARADE NAVNATH KHANDU	37000		3330	8880		49210
30	DEATH REG KARKN E	KAMBLE DEEPAK KAMALAKAR	34300		3087	8232		45619
31	DEATH REG KARKN E	SAYAD FIROZ SAYAD AHMED	40300		3627	9672		53599
32	DEATH REG KARKN E	PAWADE VITTHAL YASHWANT	39600		3564	9504		52668
33	DEATH REG KARKN E	TAMBITKAR SANJAY KISAN	37900		3411	9096		50407
34	DEATH REG KARKN E	ALI MOHD. ABDUL AZIZ	40800		3672	9792		54264
35	NOTICE KARKOON	JADHAV SUNIL HARIBHAU	32800		2952	7872		43624
36	PEON	PATEL SUNIL WAGHJI	40300		3627	9672		53599
37	PEON	SHEVADE AVINASH NARAYAN	36200		3258	8688		48146
38	PEON	NADEKAR SATYABHAMA SUNIL	26300		2367	6312		34979
39	PEON	MARU ANJU JAISINGH	22000		1980	5280		29260
40	PEON	TAPASE VAISHALI SUDHIR	16800		1512	4032		22344
41	LABOUR	MUNDHE VIJAY LAXMAN	31000		2790	7440		41230
42	LABOUR	TALPADE KRISHNA PANDURANG	22300		2007	5352		29659
43	DSINFTG SB INSP	PEDNEKAR SAGAR SHANKAR	37400		3366	8976		49742

44	DSINFTG LABR.	SAWANT RAVINDRA SHANKAR	37700		3393	9048		50141
45	DSINFTG LABR.	SALVI CHANDRAKANT S.	27100		2439	6504		36043
46	DSINFTG LABR.	DHUMAL MANISH TUKARAM	22300		2007	5352		29659
47	DSINFTG LABR.	DAGALE BHARAT KHANDU	22300		2007	5352		29659
48	DSINFTG LABR.	BHOMATE MANOJ GANPAT	17200		1548	4128		22876
49	CEMETERY ATT.	KAMBLE JITENDRA DADU	32000		2880	7680		42560
50	CEMETERY ATT.	SAKPAL RAMESH TULSHIRAM	37400		3366	8976		49742
51	CEMETERY ATT.	NARAYANKAR LAXMAN GOVIND	15700		1413	3768		20881
52	CEMETERY ATT.	POWAR AMOL SHIVAJI	18000		1620	4320		23940
53	CEMETERY ATT.	SADGIR MARTAND BABURAO	18000		1620	4320		23940

**MUNICIPAL CORPORATION OF GREATER MUMBAI- BUILDING & FACTORY E WARD**

<b>Sr. No.</b>	<b>Designation</b>	<b>Name of the employees</b>	<b>Cadre</b>	<b>Date of joining post</b>	<b>Date of joining e ward</b>	<b>Contact details</b>
<b>1</b>	EX. ENGINEER (CIVIL) & DESIGNATED OFFICER	DHUMAL DEEPAK RAMCHANDRA	A	06.11.1995	20.03.2019	23081474
<b>2</b>	ASSTT .ENGINEER	SURYAWANSHI CHANDRAKANT (WORKING IN 'B' WARD )	B	16.04.2013	20.05.2016 in Ward From 05.11.2016 to till date in 'B' Ward	-
<b>3</b>	SUB. ENGINEER	NEWREKAR ANJUM NURULHASAN (SUSPENDED ON 07.01.2016)	B	27.05.1996	15.10.2013	23081474
<b>4</b>	SUB. ENGINEER	SADANSHIVE AARTI ANKUSH	B	28.11.2008	13.01.2017	23081474
<b>5</b>	SUB. ENGINEER	BHOSALE ADITI NAIK. (WORKING IN ' E' WARD)	B	08.03.2011	20.11.2018	23081474
<b>6</b>	JR. ENGINEER	KONDGEKAR YOGESH YASHWANT	C	04.10.2013	04.10.2013	23081474
<b>7</b>	JR. ENGINEER	BAMBORDE SUBODH NARESH	C	14.06.2016	14.06.2016	23081474
<b>8</b>	JR. ENGINEER	UMREDKAR NISHANT CHANDULAL	C	30.11.2015	30.11.2015	23081474

<b>9</b>	JR. ENGINEER	YADAV SANIP JAYPRAKASH	C	10.05.2016	10.05.2016	23081474
<b>10</b>	JR. ENGINEER	GAWALI AMOL BABAN	C	04.12.2015	14.03.2019	23081474
<b>11</b>	JR. ENGINEER	KHAIRNAR KETAN BHAGWAN	C	17.07.2013	17.07.2013	23081474
<b>12</b>	JR. ENGINEER	KATGAONKAR AMOL BASVESHWAR	C	22.04.2013	22.04.2013	23081474
<b>13</b>	MUKADAM	GOVARI RAMDAS JANYA	D	20.02.1990	13.07.2017	23081474
<b>14</b>	MUKADAM	GIJE DHARMENDRA BABAJI	D	01.02.1993	23.03.2015	23081474
<b>15</b>	MUKADAM	TELI SURYAKANT VASANT	D	23.09.1998	28.06.2017	23081474
<b>16</b>	MUKADAM	JADHAV KASHINATH DULBAJI	D	07.10.1997	19.09.2017	23081474

**MUNICIPAL CORPORATION OF GREATER MUMBAI- MAINTANANCE DEPARTMENT**

<b>SR. NO.</b>	<b>Designation</b>	<b>Name of the Officers/ Employees</b>	<b>Cadre</b>	<b>Dt. Of Joining the post</b>	<b>Dt. of joining in E Ward</b>	<b>Contact Details Ph/Fax/ E-mail</b>
1	ASSTT. ENGINEER	SALI UDAYKUMAR LALCHAND	B	09.01.1992	14.10.2017	022-3741401
2	SUB ENGINEER	SINGH RAJESH RAMSAGAR	B	06.06.2008	07.06.2017	022-3741401
3	SUB ENGINEER	RASAL ABHIJIT RAVNIDRA	B	02.07.2008	20.11.2017	022-3741401
4	SUB ENGINEER	BHANGRE KIRAN RAJKUMAR (WORKING IN 'E' WARD) ROADS DEPARTMENT	B	17.01.2011	20.01.2017	022-3741401
5	SUB ENGINEER	MULUK PRAVIN MADHUKAR (WORKING IN 'E' WARD) ROADS DEPARTMENT	B	02.02.2009	21.06.2017	022-3741401
6	SUB ENGINEER	SANAS AMOL RAMRAO	B	09.03.2009	28.01.2016	022-3741401

7	JUNIOR ENGINEER	GHULE SNEHAL DATTATRAYA	C	10.05.2016	10.05.2016	022-3741401
8	JUNIOR ENGINEER	DEVALE RAVINDRA AMBAJI	C	01.10.2008	20.08.2015	022-3741401
9	JUNIOR ENGINEER	SHAIKH MEHMOOD NAZIR HASAN	C	15.10.2007	20.08.2015	022-3741401
10	JUNIOR ENGINEER	MOHITE ANIL RAMCHANDRA	C	23.11.2015	23.11.2015	022-3741401
11	STORE CLERK	VIJAY TANDALE	C	08.07.2008	08.07.2008	022-3741401

**MUNICIPAL CORPORATION OF GREATER MUMBAI - COLLONY OFFICER  
E ward**

<b>Sr no</b>	<b>Designation</b>	<b>Name of employees</b>	<b>Cadre</b>	<b>Date of joining post</b>	<b>Date of joining e ward</b>	<b>Contact details</b>
1	Colony Officer	Jitendra D Waghmare	C	28.03.1988	10.01.2013	23081474
2.	Rent Collector	Milind J Atwankar	C	23.03.2000	03.05.2013	23081474
3.	Clerk	Sunil B Sarwade	C	01.06.2000	01.11.2011	23081474



**Section 4(1)(b)(xi)**

**Details of allocation of budget and disbursement made in the office of E ward for the year 2015-2016**

□ **Publish copy of the budget**

□ **Publish copy of grant distribution –  
Format A for Current year**

<b>Sr. No.</b>	<b>Budget head description</b>	<b>Grants received (In 000's)</b>	<b>Planned use (Give details area wise of work wise in a separate from)</b>	<b>Remarks</b>
1	City Engineer Unit	107692	N/A	N/A
2	Estate Unit	34878	N/A	N/A
3	Roads Unit	70605	N/A	N/A
4	Drainage Unit	102576	N/A	N/A
5	Dy.H.E.City	100787	N/A	N/A
6	SWD	16433	N/A	N/A
7	Severage Unit	2150	N/A	N/A

**Format B for previous year**

<b>Sr. No.</b>	<b>Designation</b>	<b>Duties- Magisterial</b>	<b>Under which legislation /rules/orders/GRs</b>	<b>Remarks</b>
-	N/A	N/A	N/A	N/A

**Section 4(1)(b)(xii)**

**Details of beneficiaries of subsidy program in the office of B for the year 2014-2015**

**Name of the Scheme/program**

<b>Sr. No.</b>	<b>Name and Address of Beneficiary</b>	<b>Amount of subsidy/concession sanctioned</b>
-	Nil	Nil

**Section 4(1)(b)(xiii)**

**Particulars of recipients of concessions, permits or authorizations granted in the office of B Ward for the year 2014-2015**

<b>r. No.</b>	<b>Name of the licensee</b>	<b>License No</b>	<b>Issued on</b>	<b>Valid up to</b>	<b>General conditions</b>	<b>Details of the license**</b>
	N/A	N/A	N/A	N/A	N/A	N/A

**\*\* Details of the license- The Subject matter of the license should be mentioned. In case of non agricultural use permission, survey no. or part thereof,**

**will have to be mentioned.**

**Section 4(1)(b)(xiv)**

Details of information available in electronic form in the office of B Ward.

<b>Sr. No.</b>	<b>Type of Document File/ Register</b>	<b>Sub Topic</b>	<b>In which electronic format it is kept</b>	<b>Person in charge</b>
1		Part record of establishment section	CD	AO- Establishment

Particulars of facilities available for citizen for obtaining information in the office of B ward

Types of facilities –

- Information about visiting hrs.
- Information about interactive website
- Facilitation center
- Information about facilities for inspection of works
- Information about Notice boards
- Information about inquiry window or Reception etc.

<b>Sr. No.</b>	<b>Type of facility</b>	<b>Timings</b>	<b>Procedure</b>	<b>Location</b>	<b>Person in charge</b>
1	Information about visiting hrs.	3 pm to 5 pm	-	AO- Estt.	AO- Establishment
2	Information about interactive website	<b>www..mcgm.gov.in</b>			

3	Facilitation center	<b>8 am to 8 pm</b>	Payment of fees related to RTI	CFC	CFC In charge
4	Information about facilities for inspection of works	<b>3 pm to 5 pm</b>	-	AO- Establishment	AO- Establishment
5	Information about Notice boards	<b>10.30 am to 5.50pm</b>	-	-	-
6	Information about inquiry window or Reception etc.	<b>9 am to 4 pm</b>	-	Complaint officer	Complaint Officer

**Section 4(1)(b)(xvi)**

Details of Public information officer/APIOs/Appellate authority in the jurisdiction of (public authority)

**PIO A**

<b>Sr. No.</b>	<b>Name of PIO</b>	<b>Designation</b>	<b>Jurisdiction as PIO under RTI</b>	<b>Address/ Ph. No</b>	<b>Email ID for purpose of RTI</b>	<b>Appellate authority</b>
1	Smt. Sheetal Sachin Tamhane	Administrative Officer E ward	E ward	Assistant Commissioner E Ward , 1 st Flr. Shaikh hafizuddin marg, Byculla-W ,Mumbai No. 400008 Phone No. 23081471, Fax No. 3015004	-	Asst. Commissioner E ward

2	Smt. Manjiri Milind Aathalye	Administrative Officer E ward	E ward	Assistant Commissioner E Ward , 1 st Flr. Shaikh hafizuddin marg, Byculla-W ,Mumbai No. 400008 Phone No. 23081471, Fax No. 3015004	-	Asst. Commissioner E ward
---	------------------------------	-------------------------------	--------	---	---	---------------------------

**APIOs B**

<b>Sr. No.</b>	<b>Name of APIO</b>	<b>Designation</b>	<b>Jurisdiction as PIO under RTI</b>	<b>Address/ Ph. No</b>
1	Smt. Samiksha Satish Mungekar	Head Clerk	Establishment Department E ward	Assistant Commissioner E Ward , 1 st Flr. Shaikh hafizuddin marg, Byculla-W ,Mumbai No. 400008 Phone No. 23081471, Fax No. 301500
2	Smt. Aarti Dilip Bhalerao	Head Clerk	Establishment Department E ward	Assistant Commissioner E Ward , 1 st Flr. Shaikh hafizuddin marg, Byculla-W ,Mumbai No. 400008 Phone No. 23081471, Fax No. 3015004
3	Smt. Vinda Samat	Head Clerk	Establishment Department E ward	Assistant Commissioner E Ward , 1 st Flr. Shaikh hafizuddin marg, Byculla-W ,Mumbai No. 400008 Phone No. 23081471, Fax No. 3015004

**Section 4(1) (b) (xvii)**

Appellate authority

<b>Sr. No.</b>	<b>Name of Appellate authority</b>	<b>Designation</b>	<b>Jurisdiction as Appellate authority</b>	<b>Address/ Ph. No</b>	<b>Email ID for purpose of RTI</b>
1	Smt. Alka Sasane	Asst. Commissioner E ward	E ward	Assistant Commissioner E Ward , 1 st Flr. Shaikh hafizuddin marg, Byculla- W ,Mumbai No. 400008 Phone No. 23081471, Fax No. 3015004	ac.e@mcgm.gov.in

१६) क्षेत्रीय स्तरावर काम करण्याची योग्यता	:	आहे	नाही	संबंधित नाही
16) Fitness for field work	:	Yes	No	Not relevant
१७) संगणकावर काम करण्याची आवड	:	आहे	नाही	दिसून आली नाही
17) Willingness to work on computer	:	Yes	No	Not seen.
१८) सर्वसाधारण मूल्यमापन	:			
18) General Assessment	:			
१९) प्रतवारी (हाताने लिहावी)	:	अ+ अत्युत्कृष्ट	अ उत्कृष्ट	ब चांगला
19) Grading (Write in handwriting)	:	A+Outstanding	A very good	B Good
		ब - साधारण	क साधारणपेक्षा कमी	
		B - Average	C Below Average	
		(M)		

ठिकाण :-  
Place

प्रतिवेदन अधिकाऱ्याची सही  
नाव व पदनाम  
Signature, Name and Designation  
of the Reporting Officer

दिनांक :-  
Date :-

पुनर्विलोकन अधिकाऱ्याचे अभिप्राय  
Remarks of the Reviewing Officer

द्व.म.सं ३०६७-३००५-५००००

**बृहन्मुंबई महानगरा**

**पालिका सेवकांची मालमत्ता व दायित्वाचे**

कर्मचाऱ्याचे नाव : .....

पदनाम : .....

नियुक्ती दिनांक आणि प्रथम नियुक्तीचे पदनाम : .....

अनु. क्र.	मालमत्तेचा संदर्भ तपशील	ठिकाण	पालिका वा शासन अभिलेख संदर्भ	चौरस मीटर क्षेत्रफळ	नामिनीची किंमत	बांधकामाची किंमत
१	२	३	४	५	६	७

बृहन्मुंबई महानगरपालिका सेवा (वर्तीक) नियम १९९९ मधील १८ (१) अनुसरून वरील तक्त्यात योग्य ती माहिती देण्यात याव  
द्व.सं. : (१) मुळा लिपिक व तत्सम वा त्यावरील बेतनश्रेणीमधील प्रत्येक अधिकार्याने वा सेवकाचे प्रस्तुत पदावरील (११८०००  
(२) मा. आयुक्त यांच्या अहवालानुसारिता गोपनीय अहवाल प्रपत्रासारखी पाठवावी.  
(३) कर्मचाऱ्यांचा वारस म्हणून प्राप्त झालेल्या किंवा त्याचप्रमाणे त्यांच्या मालकीच्या, त्याचे रंकंदित किंवा धारण केलेले  
(४) कर्मचाऱ्यांचा असलेल्या दायित्वाचा तपशील अ. क्र. ११ रेषे देण्यात यावा.