



BRIHANMUMBAI MAHANAGARPALIKA

Section 4 Manuals as per provision of
RTI Act 2005 of 'S' Ward

ASSTT. ENGINEER(MAINT.) DEPARTMENT

Address - Office of Asstt. Engineer (Maint),
1st Floor, 'S' Ward Building, Near
Mangatram Petrol Pump, L.B.S.
Marg, Bhandup(West),
Mumbai – 400 078.

INDEX

Sr, No.	Section 4 (1) B Sub Clauses	Description of the Chapter's Contents	Page No.
		Introduction	3 – 4
1	4 (1) (b) (i)	Particulars of Organization, Function and Duties	5-17
2	4 (1) (b) (ii)	Powers and Duties of Officers and Employees	18– 41
3	4 (1) (b) (iii)	Procedure followed in Decision Making Process including Channels of supervision and accountability	42– 50
4	4 (1) (b) (iv)	Norms set for discharge of its functions	51
5	4 (1) (b) (v)	The rules, regulation, instruction, manuals and records, held by it or under its control or used by the employees for discharging department functions	52
6	4 (1) (b) (vi)	Statement of categories of documents that are held and under the control of the office of Asstt. Engineer (Maint.)	53 – 54
7	4 (1) (b) (vii)	Particulars of any arrangement that exists for consultation with the members of the public in relation to the formulation of the department's policy and implementation thereof.	55
8	4 (1) (b) (viii)	A Statement of the boards, councils, committees and other bodies consisting of two or more persons constituted as its part or for the purpose of its advice, and as to whether meetings of those boards, councils, committees and other bodies are open to the public or the minutes of such meetings are accessible for public.	56
9	4 (1) (b) (ix)	Directory of the officers and employees	57 – 74
10	4 (1) (b) (x)	The monthly remuneration received by each of its officers and employees including the system of compensation as provided in its regulations.	57– 74
11	4 (1) (b) (xi)	The Budget allocated to each of its agency, indicating the particulars of all plans, proposed expenditures and reports on disbursement made.	75 – 88
12	4 (1) (b) (xii)	The manner of execution of subsidy programs, including the amounts allocated and the details of beneficiaries of such programs.	89
13	4 (1) (b) (xiii)	The particulars of recipients of concession, permits or authorizations granted by department.	90
14	4 (1) (b) (xiv)	Details in respect of the information available to or held by it, reduced in an electronic form.	91
15	4 (1) (b) (xv)	The particulars of facilities available to citizens for obtaining information including the working hours of a library or reading room	92
16	4 (1) (b) (xvi)	The names, designations and other particulars of the Public Information Officers	93
17	4 (1) (b) (xvii)	Such other information as may be prescribed.	94- 129

Introduction

Assistant Engineer (Maintenance)

The right to information is implicitly guaranteed by the Constitution. However, with a view to set out a practical regime for securing information, the Indian Parliament enacted the Right to Information Act, 2005 and thus provided a powerful tool to the citizens to get information from the Government as a matter of right. This law is very comprehensive and covers almost all matters of governance and has the widest possible reach, being applicable to Government at all levels- Union, State and Local as well as recipients of government grants.

The basic object of the Right to Information Act is to empower the citizens, promote transparency and accountability in the working of the Government and make our democracy work for the people in real sense. The Act is a big step towards making the citizens informed about the activities of the Government.

The Act requires the Government authority to compile a handbook in easily comprehensible form and to update it from time to time under **Section 4(1) b** sub clauses i to xvii (17 Manuals). The objective of publishing 17 Manuals is the proactive disclosure of the information/records held by Govt. Authority for the information seekers. The office of Assistant Engineer, Maintenance, 'S' Ward is hereby publishing the Handbook for 17 Manuals as required under RTI Act 2005 to promote transparency and accountability in the working of the department & to give easy access to the information seekers to the information & records held by this office.

This handbook contains introduction about the department along with particulars of its functions, duties, objectives & vision. It further elaborates about the duties, powers delegated to its officers & employees. The procedure followed in decision-making process, accountability of concerned officers, norms set for discharge of its function along with Acts, related rules/regulations are further described in detail. It also contains the Statement of Categories of documents held by this office, directory & remuneration of its officers and employees. The details of budget allocation & its disbursement, particulars of permits issued, facilities available for citizens & details of PIO/Appellate authority is also published for information.

This consolidated updated handbook on 17 Manuals of the Act would help all the information seekers in getting information. However, in case any information seeker wants to get more information on topics covered in the handbook as well as other information may contact Assistant Engineer (Maintenance), 'S' ward whose office is situated at Office of Asstt. Commissioner 'S' ward, near Mangatram petrol pump, Lal Bahadur Shastri Marg , Bhandup (W), Mumbai-400078.

. The procedure and fee structure for getting information is as per the provisions of RTI Act, 2005.

The Municipal Corporation of Greater Mumbai has decentralized most of the main departments and placed the relevant sections of these departments under the Assistant Commissioner at ward level. Maintenance department is an important department in the Ward Office and it is operated by the Sub Engineers and Junior Engineers working under the Assistant Engineer (Maintenance) is under administrative control of Assistant Commissioner.

The Assistant Engineer (Maintenance) is the sectional Head of Ward who is responsible for the Maintenances of Municipal roads & properties with the help of departmental artisans and approved private contractors. He has to take appropriate action on the unauthorized constructions detected on Roads & footpaths. This department issues various permissions like Mandap Permission, Trench permission etc. as per various norms.

Beat wise responsibility of the electoral wards rests with the Jr. Engineers. The Jr. Engineers works under the supervision of the Sub Engineer & the control of Assistant Engineer. The preview of this department is quite extensive and the staff such as Mukadam & Labours in Roads & Repair sections, Mistry, Carpenter, Mason, Blacksmith, Plumber etc work in this department. Material required for the various departmental works is provided by Store Clerk.

As per Central Right to Information Act 2005, designated officer is appointed as Public Information Officer Maintenance for Maintenance department and as per Maharashtra Public Records Act-2005 and Maharashtra Public Records Act Rules -2007, he is designated as Record Officer for Maintenance Dept.

**Assistant Engineer (Maint.)
'S' ward**

SECTION 4 (1) (b) (i)

The particulars of functions & duties of the public authority

1	Name of the Section	Office of Assistant Engineer (Maintenance)
2	Address	Office of Asstt. Commissioner _S' ward, near Mangatram petrol pump, Lal Bahadur Shastri Marg, Bhandup (W), Mumbai-400078.
3	Head of the office	Assistant Engineer, Maintenance
4	Office Timings	Monday to Friday 8.00 a.m. to 12.00 noon and 2.30 P.M. to 5.30 p.m. Saturdays 08.00am to 11.30 am Visiting Hours - (Monday – Friday) 03.00 p.m. to 05.00 pm Holidays- Sunday & Public Holidays
5	Chowky Timings	07:30 am – 2:30 pm
6	Contact Details	Telephone no : 2564 5291 Extn : 249 (AEM—II) & 241(AEM-I). Email Asst. Eng I - ae01mt.s@mcgm.gov.in Asst. Eng II - ae02mt.s@mcgm.gov.in
7	Parent Government Department	City Engineer
8	Reporting to which office	Assistant Commissioner, _S' Ward Ward Ex. Engineer, _S' Ward
9	Jurisdiction Geographical	East Boundary extends upto Arabian sea, West boundary extends upto Vihar Lake, North boundary extend upto Goregaon Mulund Link road, South boundary extends upto Vikhroli Staion road East and West, and North boundary extends upto LBS Marg.
10	Vision	1. Well maintained Roads 2. Well maintained Municipal Properties
11	Mission	To Repair & Maintain Roads, Footpath & Municipal Properties in Ward.
12	Objectives	To Repair & Maintain Roads and Footpath & Municipal Properties.
13	Functions	(a) Repair & Maintenance of Roads & Footpath in ard. (b) Repair & Maintenance of Municipal Properties in purview of the Estate Department. (c) To demolish the unauthorized encroachments on footpath, roads & Municipal Plots. (d) Issuance permits to the excavation of trenches on roads to the various utility services & various

		<p>departments of MCGM.</p> <p>(e) Granting of Mandap Permission for social & regional purpose on Roads, Footpath & Municipal Properties.</p> <p>(f) Granting of Ganapati Mandap Permission on Roads, Footpath & Municipal Properties.</p> <p>(g) Granting of Film shooting permission on Municipal Roads.</p> <p>(h) Improve roads under Section 63 (K) of MMC Act.</p> <p>(i) Acquire the Setback area of the road & merge the same into the road.</p> <p>(j) Remove Bottlenecks.</p> <p>(k) Action in respect of dangerous Municipal buildings.</p>
14	Details of Services provided (In Brief)	<p>1. Trench Permission : -</p> <ul style="list-style-type: none"> • Issuance of permits for the excavation of trenches on roads to various utility Services & Various departments of MCGM is granted as per Trench Guideline Circular Policy issued by Municipal Commissioner u/no. MGC / F/1835 dated 17.11.2007. (attached) • Permission for laying augmentation of the utility pipelines / cables shall be granted only during the fair season starting from 1st October till 15th April. For trench exclusively on footpath / paver blocks, the permission shall be granted upto 30th April. • From 16th April to 30th September, for the fault repair, sanction of Zonal D.M.C. shall be obtained as far as possible before undertaking excavation. • As per recent circular vide no. MGC/F/9974 dated 04.02.2013

		<p>2. Issuance of Ganpati Mandap Permission is granted as per Circular u/no MDF / OD / 8358/Gen dt. 11.06.2013.</p> <p>3. Issuance of Film Shooting permission.</p> <p>4. Bottleneck :-</p> <ul style="list-style-type: none"> • Bottleneck means construction, narrowing, obstruction, congestion, block, partially/total blockage which leads to traffic congestion, traffic clogging problems started due to precipitant. • Reference Circular – AMC/ES/D/168 (ChE/1876/DPC/Gen) Dated 25.02.2004. • Recently we are using MRTP 56 clause.(Power to require removal of authorized development or use.) • (AMC/ES/9141 dt. 14.10.2011. <p>5. 63 K Road :-</p> <ul style="list-style-type: none"> • Arising out of representation from residents of private layouts and Public representatives, that layout residents are paying Municipal taxes and therefore roads should be maintained by MCGM. • Reference Circular ChE/1484/Roads Dated 16.05.2009 <p>(I) As per the circular 1/3 cost of up gradation shall be borne by Co. Op. Hsg. Society of Residents, 2/3 cost by MCGM and the private street shall be declared public under section 306 of MMC Act 1888 before taking up the works. However, in case 1/3 construction cost is not deposited by Co. Op. Hsg. Society / Federation of Societies and roads in private layout are to be improved using Municipal Funds,</p>
--	--	---

M.P./MLA funds then sanction under section 63 K

6. Departmental Maintenance :-

- Beat wise responsibility of the electrol wards rests with the Junior Engineers. The Junior Engineers works under the supervision of the Sub Engineer and the control of Asstt. Engineer. The Junior Engineer reports to his chowky along with his workmen at 7.30 a.m. the labour distribution is carried out after singing the muster at 7.30 a.m.
- A group of workmen (gang) comprising of 2 to 3 labours, the skilled labours such as mason, carpenter and plumber is formed and additional labours as per the extent of jpb is provided to that gang. A job Slip is issued to gang to carryout various day to day work. The job Slip is prepared by the Junior Engineer according to nature and priority of complaint and it is signed by Mistry and the Junior Engineer. The address of Municipal property where the work is to be carried out, nature of work and the number of workmen is mentioned in the job slip.
- Generally, sufficient material is brought to the chowkies from the Central Store. The non-scheduled items are also procured by following due procedures or by calling for the quotations, from the open market. The material thus procured is stocked in the store and is in possetion with supervision / clerk. This material is transported to the work site in Municipal vehicles.
- Junior Engineers, Mistry / Mukadam visit the work site, at least once, for supervision and guidance. The Junior Engineer reports to the office to attend the office work in the afternoon session between 2.300 p.m. to 5.30 p.m

7. E-Tendering :-

- Preparation of Estimate by J.E.
- Obtain Administrative approval from ward Committee or DMC etc.
- Estimate is uploaded in SAP System in J.E. or SE_s ID (R3 Module)
- BID is created by S.E. using their ID. SRM Module E tendering.
- BID is forwarded to E.E. Ward for approval & publishing on Municipal Website.
- Ward E.E. Publish the Tender (SRM E tender login Approval)
- List of Bidder and letter to successful 1st Lowest Bidder with 5 % contract amount to deposit with MCGM.
- Release P.O. Amount by A.O.
- PO is created by A.E. in SAP Module.
- Create Contract by E.E. ward in SAP System.
- PO is generated by A.E. in SAP and released by E.E. Ward.
- PO printout is taken by AE and issued to Bidder .

8. Mahatma Gandhi Pathkranti Yojana:-

- It is a scheme to clear the footpath of encroachment.
- Certain roads are identified in each ward.
- Cutoff date is 01.01.1995.
- The eligible hutment dwellers are offered

		<p>alternate accommodation.</p> <ul style="list-style-type: none"> • To draw lottery to decide alternate accommodation in presence of all eligible hutments dwellers. • After shifting mass demolition to be carried out. • The footpath so cleared should be immediately developed for public usage. • AMC/ES/944/IV dated 31.03.2012 • DMC/RE/Z.Su/4274 dated 26.02.2013.
15	Physical assets (Statement of lands & Buildings and other Assets)	(Page No.13-16)
16	Organization's structural Chart	(Page No.17)

Details of Departmental Chowky in Asstt. Engineer (Maint) Section

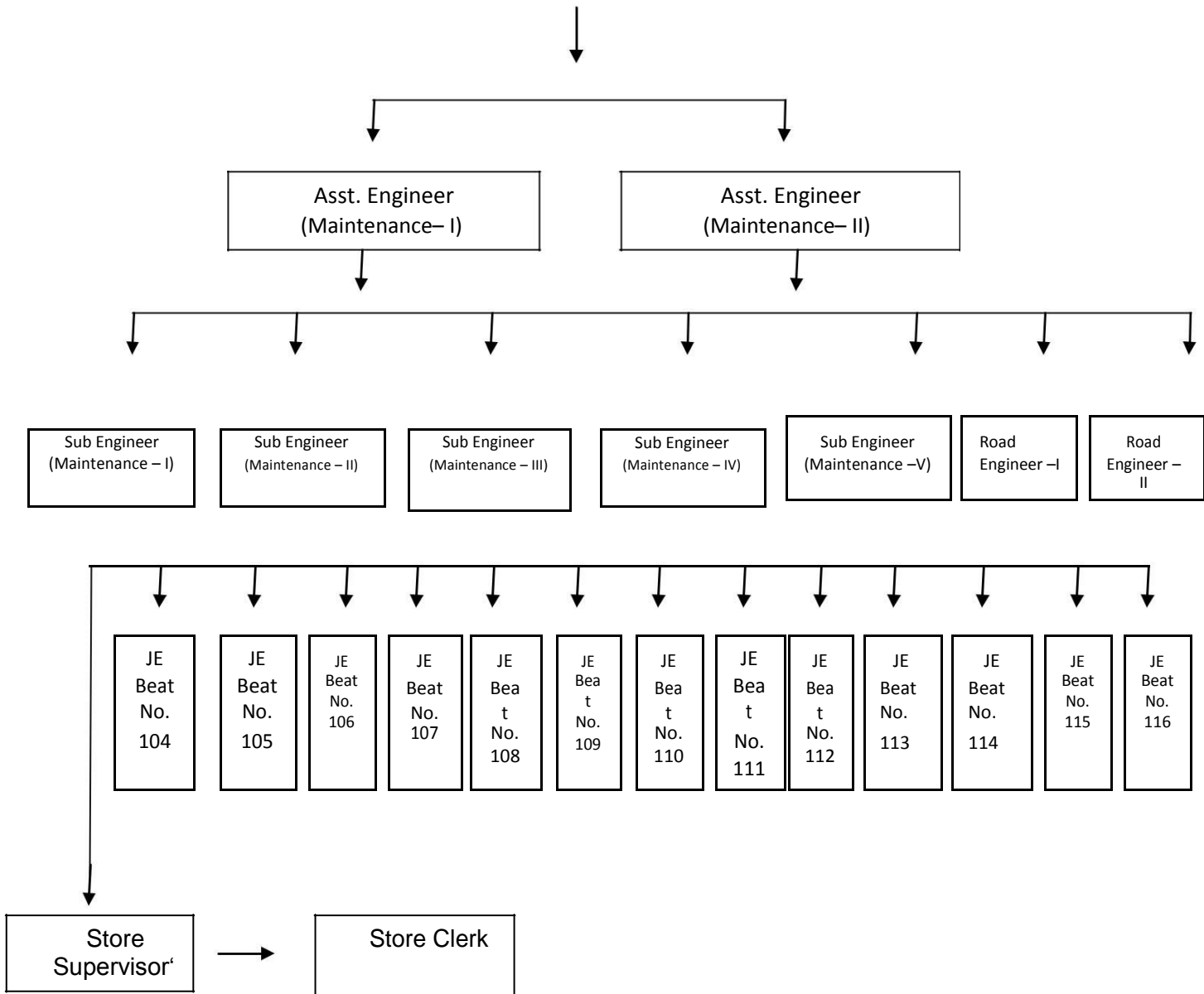
Sr. No.	Type	Name of Chowky	Address of Chowky	Contact No.
1	Road Repair &	MVR Chowky Shinde	Ground floor, MVR Shinde school, MVR Shinde Marg , Bhandup (w), Mumbai-400078	NIL
2	Drainage	API Chowky	1 st floor, API market, behind Dreams mall station road, Bhandup (W), Mumbai-400078	NIL
3	Drainage	Menon chowky	Near Menon college, Bhandup station (E) , Bhandup , Mumbai-400042	NIL
4	Drainage Repair Road &	Tagore Chowky nagar	Near Don Bosco School, Tagore nagar group no.1 , Vikhroli (E), Mumbai-400083	NIL

Physical Assets of Asstt. Engineer (Maintenance & Repair) 'S' Ward

Sr. No.	Beat No	Name & Address	Floor
1	104	Tulshetpada Municipal School, Tulshetpada, Lake road, Bhandup (W),	Gr. Flr.+4
2	104	Kindipada Municipal Shool, Khindipada , Bhandup (W) ,	Gr. Flr. Structure
3	104	Health post, Tulshetpada Municipal School, Tulshetpada, Lake road, Bhandup (W),	Ground Floor
4	105	Bhandup Goan Municipal School, Bhandup (E)	G+3
5	105	Subhash Nagar Municipal School, Ceat Tyre road, Bhandup (W)	Gr. Flr. Structure
6	105	LBS marg Meternaty home, Kukreja Complex, Bhandup (W)	G+3
7	105	Health Post , Subhash Nagar, Ceat Tyre road, Bhandup (W)	Gr. Floor Structure
8	106	Tembhipada Municipal School, Tembhipada road ,Bhandup (W), Mumbai-400078.	G + 2
9	107	Tembhipada Municipal Dispensary, Tembhipada road ,Bhandup (W), Mumbai-400078.	Ground floor structure
10	107	Shivaji nagar Municipal school, Shivaji nagar, Bhandup (W), Mumbai-400078	Ground floor structure
11	108	M.V.R. Shinde Municipal School, MVR Shinde marg, Ishwarnagar, Bhandup (W)	G + 4
12	108	Tank Road Municipal School, Tank road, Bhandup (W)	G+4
13	108	Savitribai Maternity Home, Bharatkumar Bhasina Marg, Bhandup (W)	G+4
14	108	MVR Shinde Dispensary, MVR Shinde marg, Bhandup (W)	Ground floor structure
15	109	Ganga Vidyamandir Municipal School, Kokan Nagar, Bhandup)	G+4
16	109	Municipal Urdu School, Jamil Nagar, Pratapnagar road, Bhandup (W)	G+4
17	109	Shivaji Talao Dispensary , Ganga Vidyamandir Building Kokan Nagar, Bhandup)	Ground Floor
18	110	Kanjur Village Municipal school, Kanjur gaon, Bhandup (E) , Mumbai-42	G + 3
19	110	Neharu nagar Mun. School, Neharu nagar Kanjurarg (E), Mumbai-42	Ground floor structure
20	110	Municipal Dispensary , near Kanjurmarg Police station , Neharu nagar Kanjurmarg (E), Mumbai-42.	Ground floor structure

21	110	Municipal Health Post , near Kanjurmarg Police station , Neharu nagar Kanjurmarg (E), Mumbai-42.	G + 1
22	111	Dockyard Municipal School, Naval Dockyard Colony, LBS marg, Kanjurmarg (W), Mumbai – 78	G+3
23	112	Kannamwar Municipal School, Kannamwar Nagar, Vikhroli(E)	G+3
24	112	K.M.J.P. Hospital, Kannamwar Nagar, Vikhroli (E)	G+1
25	113	BMC school no. -01 , Tagore nagar group no.1, T. K. Kamble marg, Vikhroli (E),	G + 3
26	113	BMC school no. -03 , Shani mandir path, Vikhroli (E),	Ground floor structure
27	113	Dr. Babasahed Ambedkar Maternity home, Tagore nagar, Vikhroli (E)	G + 3
28	114	Tagore Nagar Municipal Market, Tagore Nagar, Vikhroli (E)	Gra
29	114	Ambrapali Buiding, SWM Staff Quarters, Tagore Nagar, Vikhroli (E)	G+5
30	115	Tirandaz Muncipal High school, IIT maingate , Powai, Mumbai-400076	G + 4
31	115	Tirandaz Municipal Lopra school, Durga Devi Sharma Udyan, Gokhale nagar, Powai, Mumbai-76	Ground floor structure
32	115	Varsha magar Municipal school, Road no.17 , near Kailash complex, Vikhroli (W)	G+5
33	115	Tirandaz Village Municipal Dispensary, Prashant apartment road, IIT maingate, Powai, Mumbai-76	Ground floor structrue
34	116	Passpoli Marathi Municipal School, Sakivihar road, Post NITII, Powai, Mumbai-87	Ground floor structure
35	116	Passpoli Uttar. Prathmik School, near L & T junction, sakivihaar road, Powai -87	G + 3

Organization's structural Chart of Office of Assistant Engineer (Maintenance) 'S' Ward



Designation	RD Roller driver	Mistry	Painter	Mason	Carpenter	Mukadam	Labourers	Plumber	Drain Cleaner
F1	0	3	0	1	1	15	107	0	60
F2	0	0	0	0	0	0	0	0	0

SECTION 4 (1) (b) (ii)

The powers of officers and employees in the office of Assistant Engineer (Maintenance)

A – Financial Powers

Sr. No.	Designation	Powers- Financial	Under which legislation / rules / orders / GRs	Remarks
1	Assistant Engineer (Maintenance)	Rs.3000/-	As per the circular no: CA/FRD/I/48, dated : 31/01/2013	-
		Rs. 3,00,000/-	--	To scrutiny of Estimate
2	Sub Engineer (Maintenance)	Nil	N.A.	-
3	Junior Engineer (Maintenance)	Nil	N.A.	-

The powers of officers and employees in the office of Assistant Engineer (Maintenance)

B - Administrative Powers

Sr. No	Designation	Powers -Administrative	Under which legislation / rules / orders / GRs
1	Assistant Engineer (Maintenance)	Please refer to Delegation of powers to Asstt. Engineer (Pg. No 29-33)	1. MMC Act 1888 2. MRTP Act 1966
2	Sub Engineer (Maintenance)	Please refer to Delegation of powers to Sub Engineer on (Pg. No 34-37)	1. MMC Act 1888 2. MRTP Act 1966
3	Junior Engineer (Maintenance)	Please refer to Delegation of powers to Junior Engineer on (Pg. No 38-41)	1. MMC Act 1888 2. MRTP Act 1966

The powers of officers and employees in the office of Assistant Engineer (Maintenance)

C – Magisterial Powers

Sr. No.	Designation	Powers - Magisterial	Under which legislation / rules / orders / GRs
1	Assistant Engineer (Maintenance)	Nil	N.A
2	Sub Engineer (Maintenance)	Nil	N.A
3	Junior Engineer (Maintenance)	Nil	N.A

The powers of officers and employees in the office of Assistant Engineer (Maintenance)

D - Quasi Judicial Powers

Sr. No.	Designation	Powers- Quasi Judicial	Under which legislation / rules / orders / GRs
1	Assistant Engineer (Maintenance)	Appointed as Public Information Officer under RTI Act,2005	Circular No. MOM/8957 dtd: 02.01.2006
2	Sub Engineer (Maintenance)	Nil	N.A
3	Junior Engineer (Maintenance)	Nil	N.A

The powers of officers and employees in the office of Assistant Engineer (Maintenance)

E – Judicial Powers

Sr. No.	Designation	Powers - Judicial	Under which legislation / rules / orders / GRs
1	Assistant Engineer (Maintenance)	Nil	N.A
2	Sub Engineer (Maintenance)	Nil	N.A
3	Junior Engineer (Maintenance)	Nil	N.A

The duties of officers and employees in the office of Assistant Engineer (Maintenance)

ASSISTANT ENGINEER (MAINTENANCE)

Asstt. Engineer (Maintenance) of the ward work as per Mumbai Municipal Act, 1888, Maharashtra Regional & Town Planning Act, 1966. His work includes repairs and maintenance of Municipal Roads, Footpath, Ward Offices, Staff Quarters, Estate properties, Municipal Chowkies, Depots, Maternity Homes, Dispensaries, PSC Blocks, Municipal Cemeteries, Fire Brigade, Schools, Welfare Centre, Conservancy Chawls, either departmentally or through the e-tendering. He Issues Trench permission, Ganpati Mandap, Social & Religious Mandap Permission, Shooting Permission, acquire setback area of the road & merge the same into the Road, Remove Bottleneck, demolish unauthorized encroachments on Municipal Roads, Footpath & Municipal properties.

Assistant Engineer (Maintenance) of the ward is responsible to Assistant Commissioner of the Ward and Zonal Dy.Municipal Commissioner for day-to-day work of the department in respect of administrative and policy work. He is also responsible to Ward Executive Engineer in respect of technical matters..

Asstt. Engineer (Maintenance) of the ward is assisted by Junior Engineer & Sub-Engineers to execute daily work. Respective Roads & Repairs Labour, Mukadam, Mistry, Carpenter, Mason, Plumber etc. help Junior Engineers & Sub-Engineers of the department to attained day to day complaints received.

Asstt .Engineer (Maintenance) of the Ward executes following duties/works from his staff working under his control:-

1. Exercise full control over the executive as well as the clerical and labour staff working in his section and ensure that all of them function efficiently.
2. Issuance of Trench permissions to various utilities as wel as to various departments of MCGM.
3. Issuance of Film shooting permission on Municipal Roads & properties.
4. Issuance of Ganpati Mandap/Navratri/Social /Religious permission on Municipal Roads & properties.
5. To acquired set back, bottle neck & Road Line.
6. To remove the encroachments on roads with the help of Sub Engineers and Jr. Engineers.

7. To supervise the work of store supervisor, store clerk and the labours in the store and insure smooth functioning of the store.
8. To ensure that the necessary information is furnished to the concerned officers, in time and to take action on the defaulting staff, in case of delay.
9. To put up indents for the store item after discussion with the Sub Engineers and arrange for the requisite stock and to check for its quality and quantity. Material Checking norms.
 - 25 % of the store items, once in three months
 - 25 % of the depot items, once in three months
 - To dispose off the scrap material by following due procedure.
10. To carry out inspection to assess the condition of major roads.
11. To ensure prompt disposal of the complaints. To check the registers and daily diaries, at least fortnightly and monthly, respectively.
12. To exercise control on the municipal funds available, with the help of Head Clerk (Expenditure) and distribute the said funds among the Sub Engineers, appropriately and make them responsible for the utilization of funds.
13. To implement the orders issued by higher authorities.
14. To take appropriate action on the unauthorized constructions, detected on municipal roads & footpath.
15. To take timely action of propping, cordoning and demolition of dilapidated municipal buildings. To serve demolition notices on receipt of orders from the Executive Engineer or higher authorities.
16. To check at least 20 % of mass supply of materials and the contract bills. To check the estimate pertain to the repairs of municipal buildings, roads, etc. prepared by the Jr. Engineers & Sub Engineers.
17. To accept and serve notices under various Municipal Acts and take necessary action in the matter.
18. To visit major works in the ward at least once in a week.
19. To maintain the municipal properties and other buildings in the purview of the Estate Department (e.g. School, Hospitals, etc.)
20. To co-ordinate with the Law officers as regards the Court-case lodged by the MCGM or the matters against MCGM.

21. To get dilapidated municipal building vacated with the assistance of Police.
22. To visit the sites where labourers work and check on mustering once a month.
23. To co-ordinate with Central Agency as regards major repairs of municipal properties and maintenance of major roads.
24. To attend Ward Committee meetings in the ward office.
25. Review of SAP Complaints
26. Review of MCL A/B/C.
27. Review of MC-P.G. Cases
28. Review of Outstanding Audit Notes (Once monthly with MCA staff)
29. Review of pending Union problems (Once in Two months)
30. Enquiry procedure.
31. To maintain Daily Diary.

To execute above mentioned works Labours, Mukadams, Mistry, Junior Engineers Sub-Engineers inspect their respective sub-sections and report to the Asstt. Engineer (Maintenance) of the ward. Based on these reports, further necessary actions are taken by the Asstt. Engineer and the Asstt. Commissioner of the ward and under guidance of the Ward Executive Engineer in case of technical matters.

Following registers are maintained by the office of the Asstt. Engineer (Maintenance) of the ward :-

1. Notice Register
2. Demolition Register
3. Property Register
4. Set back Register
5. R.T.I. Register
6. MCL A/B/C Register
7. Mandap Permission Register
8. M.C.A. Audit Register
9. F.R.D. Audit Register
10. P.R.D. Audit Register
11. Court Register

DUTIES OF SUB-ENGINEER (MAINTENANCE)

- 1) He shall be subordinate to the Asstt. Engineer and shall carry out their orders in general.
- 2) Supervision on departmental works.
- 3) To supervise each work under him at the start, during execution, completion and frequently as necessary.
- 4) Supervision on Funds available under various budget heads.
- 5) Timely submission of payments, bills and adjustments.
- 6) Site visit for major faults in the Municipal Buildings
- 7) Consolidation of revenue and outstanding requisition.
- 8) Supervision on employee muster books in order to see that the staff reports on duty in time and the fault entries are not made.
- 9) To check leave and service record and —Dead Stockll register and get them updated.
- 10) To ensure timely action in Court matters and order.
- 11) He shall draft replies to the complaints or references received in his section.
- 12) He shall attend the Courts as and when required for giving evidence helping the Sub. Engineer in conduction cases etc.
- 13) To take action against unauthorized structures / unauthorized developments on Municipal lands etc. as per M.M.C.Act and M.R.T.P. Act and as per the policy guidelines issued by time to times by the administration.

To exercise, perform and discharge duties entrusted under Section 68(Municipal officers may be empowered to exercise certain powers, etc, of the Commissioner.) of M.M.C. Act as per the au-thority issued by Zonal D.M.C

- 1) He shall attend the various functions organized by the administration such as Disaster Management Plan, Swachhata Abhiyan, Anti Flooding Duties, Mahapaur Daud, Cleansing Camps, Advance Locality Management etc.
- 2) To maintain Daily Diary.
- 3) To maintain various registers such as :-
 1. Notice Register
 2. Demolition Register
 3. Property Register
 4. Set back Register
 5. R.T.I. Register
 6. MCL A/B/C Register
 7. Mandap Permission Register
 8. M.C.A. Audit Register

DUTIES OF JUNIOR -ENGINEER (MAINTENANCE)

- 1) He shall be subordinate to the Asstt. Engineer & Sub Engineer and shall carry out their orders in general.
- 2) Supervision on departmental works.
- 3) To supervise each work under him at the start, during execution, completion and frequently as necessary.
- 4) Supervision on Funds available under various budget heads.
- 5) Timely submission of payments, bills and adjustments.
- 6) Routine site visit in his jurisdictional area.
- 7) Attending Site chowky and control the labours working under him.
- 8) To check leave and service record and —Dead Stockll register and get them updated.
- 9) To ensure timely action in Court matters and order.
- 10) To carry out joint inspection along with various utilities.
- 11) He shall draft replies to the complaints or references received in his section.
- 12) He shall attend the Courts as and when required for giving evidence helping the Sub. Engineer in conduction cases etc.
- 13) To take action against unauthorized structures / unauthorized developments on Municipal lands etc. as per M.M.C.Act and M.R.T.P.Act and as per the policy guidelines issued by time to times by the administration.
- 14) To exercise, perform and discharge duties entrusted under Section 68 of M.M.C.Act as per the authority issued by Zonal D.M.C
- 15) He shall attend the various functions organized by the administration such as Disaster Management Plan, Swachhata Abhiyan, Anti Flooding Duties, Mahapaur Daud, Cleansing Camps, Advance Locality Management etc.
- 16) To maintain various registers such as :-
 1. Notice Register
 2. Demolition Register
 3. Property Register
 4. Set back Register
 5. R.T.I. Register
 6. MCL A/B/C Register
 7. Mandap Permission Register
 8. M.C.A. Audit Register

DELEGATION OF POWERS TO ASSISTANT ENGINEER

Under Section 68 of the Mumbai Municipal Corporation Act 1888 as amended up to date, Asstt Engineer (Maintenance) is hereby empowered to exercise, perform and discharge under the control and subject to the revision of the Commissioner, the several powers, duties and functions conferred or imposed upon or vested in the Commissioner by the several Sections, Sub-Sections and Clauses of the said Act herein below mentioned :-

EXPLANATION :- The entries in the second column of the below table headed 'Nature of powers' etc. are not intended as definitely described in Sections, Sub-Sections and Clauses mentioned in the first column or even as abstracts of those sections, sub-sections and clauses, the numbers of which are given in the first column.

Sections	Nature of Powers, Duties and Functions delegated
84 & 85(1)	(e) Grant Casual Leave to the inferior staff working under him upto the limit allowed by any rules for the time being in force. (f) Grant leave without pay admissible under the Rules to the Labour staff. To appoint when necessary, persons to act in place of employees who are absent on leave.
112	To receive money in respect of any matter pertaining to the City Engineer's Department.
113(3)	(a) To incur expenditure on office contingencies (except furniture) upto Rs.3000/- per item. (b) To make cash purchase and payment of bills out of imprest upto Rs.3000/- and payment of telephone call bills for any amount.
222(1) & (2)	To construct, repair or alter Municipal drains and to enter upon land for the purpose.
228	To grant permission and prescribed conditions as to communications with Municipal drains.
234	Determining details of drains and drainage fittings or cesspools for new buildings.
240	Granting permission for the construction of the drain so as to pass beneath building.
243(2)	Making requisition in respect of taps, covering and means of ventilation for drain and cesspools.
244(1)(4) 246-A	To erect shafts or pipes for ventilating drains and cesspools. To permit the construction of water closets and privies.
247	Prescribing water closet and other accommodation in building newly created or re-erected.
248(1)(c)	Requisition to enforce provision of water closet or privy or urinal or bathing or washing place etc.
251	Determining details regarding water closets under Clauses (a)(d) and (e).
251(B)	To determine use of places of bathing or washing clothes or domestic utensils.
253	Inspection and examining drains, etc. not belonging to the Corporation.
254	Opening ground etc. for inspection and examination under Section 253.
255	Reinserting the ground etc. opened for purposes of inspection.
257	Making requisition on owners of premises as provided in Sub-Section (1) for doing the work mentioned in Sub-Section (2).
258(a)(b)(c)	Prohibition of acts, contravening the provisions under Chapter IX of the

	M.M.C.Act.
259-A	Requiring any person to employ a Licensed Plumber to execute a work to furnish the name of a Plumber and to put up completion certificate by the Licensed Plumber.
298(2)	To take possession or and clear the lands under this section.
311	To require owners to alter ground floor doors, etc. opening outward.
313(1)	To grant permission for placing stalls, chairs and benches, boxes, ladder, bales etc. on footpath and streets.
314	To remove obstructions etc. on streets made contrary to section 312 or 313.
317	To permit booths on festivals in certain streets.
321(2)	To prevent removal, etc. without permission of fences etc. erected in the streets, while works are in progress.
322	To prevent opening, etc. of streets unless done with permission and to give such permission.
324	To restore streets opened or broken up when the person responsible fails to do so.
325	To require person permitted to open streets to provide for diversion of traffic etc.
326(2)&(3)	To regulate hoarding etc. in streets.
329	To require and secure adoption of measures to protect and enclose dangerous places.
333(4)	Manner of laying gas pipes.
338	To require certain documents on receipt of Notice under Section 337.
339	To refuse to accept plans, etc. not signed by the Licensed Surveyor.
340	To require, further, particulars and details
342	To receive notices of intentions to make additions etc. to building.
343	To require certain documents and particulars on receipt of Notice under Section 342 and to refuse to accept plans, etc. not signed by Licensed Surveyor.
344-A	Supervision of buildings and work.
345	To intimate approval of work of which notice is received.
346(1) 347(A)(B)& (C)	To intimate disapproved of such work. Prohibiting user of a non-residential buildings or chawl to a residential one and of a residential building or chawl to that of a godown, warehouse, workshop, workplace, factory, stable or a motor garage and prohibiting making or causing any alterations in an existing building originally constructed or authorized to be used for human habitation for the purpose of using it or causing it to be used as a godown, warehouse workshop, workplace, factory, stable or motor garage.
348(1)(a)(b) & (c)	Provision as to buildings, which are to be newly erected.
349	To refuse permission for walls, coverings, etc. of inflammable materials and to require removal of such wall or covering.
350	To inspect buildings in course of erection, alterations, etc
353	To specify any matter in contravention of Act of Bye Law within three months after completion.
353(A)	To grant completion certificate and permission to occupy or use.
354	To require removal etc. of ruinous or dangerous structures and to temporarily secure etc. repair etc.
354A(1)	To issue a written notice to stop within the specified period the erection of the work unlawfully carried on or commenced upon any premises.
354A(2)	To direct removal of person unlawfully carrying on the erection of buildings or the execution of any such works described in Section 342.
368	To require owners to provide receptacles of a size for collection of dust, ashes, refuse, rubbish and trade refuse, etc.

374	To inspect building or premises for the purpose of ascertain sanitary conditions thereof.
375	To require cleansing and lime washing of any building etc.
375-A	To require the owners to remove buildings, materials or debris, etc. accumulated due to house collapse etc.
377(1-A)	To require cleansing, clearing or enclosing any premises over grown with rank vegetation, etc.
377-A	To require the owners of the buildings to abate the nuisance arising from rainwater leaking from the roofs of the building or to prevent its recurrence.
380	To require removal, alteration etc., of unsanitary huts and sheds.
381	To require the owners of the building to abate the nuisance arising out of the defects.
383	To require cutting and looping of hedges, trees, etc. in certain cases and to take measures for protection of public.
394	To prohibit certain articles to be kept and certain trades processes and operation to be carried out without a license to exercise all other powers in respect of the things liable to be seized, destroyed etc, to prevent danger or nuisance.
396 Sub-section (1)	To inspect at any time, by day or by night without notice any premises used for manufacture as mentioned in Section 394 and any premises in which a furnaces employed for the purpose of manufacture and into any bake house to see whether any provision or this Act or any condition of any license is being contravened and as to whether any nuisance is created.
479(5)	To require production of licenses or written permission.
488	To enter into or upon buildings or and with or without Assistant or workment (1) for the purpose of exercising performing or discharging, the powers, duties or functions hereinabove delegated with reference to the sections above specified. The delegation of powers of entry under Section 488 is to be subject in each case to strict observance of and compliance with the provisions and conditions prescribed by Clauses (a), (b), (c) and (d) so far as applicable.
489	To take measures and execute work, etc, failure of compliance with requisitions or orders under provisions of the Act.
492(2)(a)	To call on occupiers to disclose rents for purpose of determining question of liabilities to pay expenses in certain cases.
517(1)(a)	To take or withdraw from proceedings against persons charged with offences against the Act etc. as described in Sub-Clauses (i),(ii) and (iii) of Clause (a).

DELEGATION OF POWERS TO SUB ENGINEER

Under Section 68 of the Mumbai Municipal Corporation Act 1888 as amended up to date, Sub -Engineer (Maintenance), Municipal Corporation of Greater Mumbai is hereby empowered to exercise, perform and discharge under the control and subject to the revision of the Commissioner, the several powers, duties and functions conferred or imposed upon or vested in the Commissioner by the several Sections, Sub-Sections and Clauses of the said Act herein below mentioned:-

EXPLANATION :- The entries in the second column of the below table headed 'Brief Description of Powers to be exercised and performed' are not intended as definitions described in Sections, Sub-Sections of these sections, but are inserted merely as reference to the subjects of the sections, sub-sections and the numbers of which are given in the first column.

Sections	Nature of Powers, Duties and Functions delegated
84 & 85(1)	a) Grant Casual Leave to the inferior staff working under him upto the limit allowed by any rules for the time being in force. b) Grant leave without pay admissible under the Rules to the Labour staff. To appoint when necessary, persons to act in place of employees who are absent on leave.
112	To receive money payments on account of the Municipal Fund and to lodge them in a bank.
222(1) & (2)	To cause to be served a notice of demand.
228	To grant permission and prescribed conditions as to communications with Municipal drains.
231	To enforce drainage of undrained premises situate within a hundred feet of a Municipal drains.
234	Determining details of drains and drainage fittings or cesspools for new buildings.
243(2)	Making requisition in respect of taps, covering and means of ventilation for drain and cesspools.
244(1)	To power affix pipes for ventilation of drains.
244(4)	To erect shafts or pipes for ventilating drains and cesspools
246-A	To permit the construction of water closets and privies.
247	Prescribing water closet and other accommodation in buildings newly created or re-erected.
248(1)(a), (b),(c)	Requisition to enforce provision of water closet or privy or urinal or bathing or washing place etc.
251	Determining details regarding water closets under Clauses (a)(d) and (e).
251(B)	To determine use of places of bathing or washing clothes or domestic utensils.
253	Inspecting and examining drains, etc. not belonging to the Corporation.
254	Opening ground etc. for inspection and examination under Section 253.
255	Reinstating the ground etc. opened for purposes of inspection.
257	Making requisition on owners of premises as provided in Sub-Section (1) for doing the work mentioned in Sub-Section (2).
258(a)(b)(c)	Prohibition of acts, contravening the provisions under Chapter IX of the

	M.M.C.Act.
259-A	Requiring any person to employ a Licensed Plumber to execute a work to furnish the name of a Plumber and to put up completion certificate by the Licensed Plumber.
314 (a), (b), (c)	To remove without notice things placed or deposited upon any place or attached or suspended in contravention of Clause (a) or Clause (c) or Sub-section (1) or Section 313.
317	To permit booths on festivals in certain streets.
322	To prevent opening, etc. of streets unless done with permission and to give such permission. (Except for newly constructed roads or capital roads)
322(3)	To remove without notice any building materials or any scaffolding or any temporary erection or any posts, bars, rails, boards or other things by way of enclosure which have been deposited or set up in any street without the permission or authority specified in Sub-section (1) or which having been deposited or set up with such permission or authority, have not been removed within the period specified in the notice issued under Section (2).
350	To inspect buildings in course of erection, alterations, etc.
354	To require removal etc. of ruinous or dangerous structures and to temporarily secure etc. repair etc.
354A(1)	To issue a written notice to stop within the specified period the erection of the work unlawfully carried on or commenced upon any premises.
354A(2)	To direct removal of person unlawfully carrying on the erection of buildings or the execution of any such works described in Section 342.
368	To require owners and occupiers to collect and deposit dust etc.
374	To inspect building or premises to ascertain sanitary conditions thereof.
375	To require cleansing and lime washing of any building etc.
375-A	To require the owners to remove buildings, materials or debris, etc. accumulated due to house collapse etc.
377	To make requisition against the owner or occupier for removal of rank vegetation.
377-A	To require the owners of the buildings to abate the nuisance arising from rainwater leaking from the roofs of the building or to prevent its recurrence.
380	To require removal, alteration etc., of unsanitary huts and sheds.
381	To require the owners of the building to abate the nuisance arising out of the defects.
383	To require cutting and looping of hedges, trees, etc. in certain cases and to take measures for protection of public.
390 (1) (2) (3)	Regulations of factories, trades, etc.
479(5)	To require production of licenses or written permission.
488	To enter premises with assistants etc. to inspect survey and execute works

DELEGATION OF POWERS TO JUNIOR ENGINEER

Under Section 68 of the Mumbai Municipal Corporation Act as amended up to date, Junior Engineer (Maintenance) under Asstt. Commissioner is hereby empowered to exercise, perform or discharge under the control and subject to the revision of the Commissioner, the under mentioned powers, duties and functions conferred or imposed upon or vested in the Commissioner by the several Sections, Sub-Sections and Clauses of the said Act herein below mentioned :-

EXPLANATION :- The entries in the second column of the below table headed 'Nature of Powers' etc. are not intended as definitely described in Sections, Sub-Sections and Clauses mentioned in the first column or even as abstracts of those sections, sub-sections and clauses but are inserted merely as reference to the subjects of the sections, sub-sections and clauses, the numbers of which are given in the first column.

Sections	Nature of Powers, Duties and Functions delegated
231	To enforce drainage of untrained premises situate within a hundred feet of a Municipal drains.
248(1)(c)	To substitute water closet accommodation for any privy accommodation.
253	To inspect and examine all drains, ventilation shafts and pipes cesspools of house gullies, water closets, privies, latrines and urinals to which this Section applied.
254	Opening ground etc. for inspection and examination under Section 253.
255	Reinstating the ground etc. opened for purposes of inspection.
314 (a), (b), (c)	To remove without notice things placed or deposited upon any place or attached or suspended in contravention of Clause (a) or Clause (c) or Sub-section (1) or Section 313.
322	To prevent opening, etc. of streets unless done with permission and to give such permission.
350	To inspect buildings in course of erection, alterations, etc.
354	To require removal etc. of ruinous or dangerous structures and to temporarily secure etc. repair etc.
354A(1)	To issue a written notice to stop within the specified period the erection of the work unlawfully carried on or commenced upon any premises.
354A(2)	To direct removal of person unlawfully carrying on the erection of buildings or the execution of any such works described in Section 342.
368	To require owners to provide receptacles of a size for collection of dust, ashes, refuse, rubbish and trade refuse, etc.
374	To inspect building or premises for the purpose to ascertain sanitary conditions thereof.
375	To require cleansing and lime washing of any building etc.
377	To make requisition against the owner or occupier for removal of rank vegetation.
377-A	To require the owners of the buildings to abate the nuisance arising from rainwater leaking from the roofs of the building or to prevent its recurrence.
380	To require removal, alteration etc., of unsanitary huts and sheds.
381	To require the owners of the building to abate the nuisance arising out of the defects.

390 (1) (2) (3)	Regulations of factories, trades, etc.
479(5)	To require production of licenses or written permission.
483	Service of notice - To serve, issue or present or give notices, bills schedules summonses and other such document required by this act to the served upon or issued or presented or given to any person.
488	<p>To enter into or upon buildings or land with or without Assistant or workmen.</p> <ol style="list-style-type: none"> 1. For the purpose of exercising performing or discharging, the powers, duties or functions hereinabove delegated with reference to the sections above specified. 2. For the purpose of carrying into effect under Section 489 any requisition or order (not only complied with) made by written notices by the Commissioner; under either of the following Section or Sub-section namely Section 257(1). Section 308 Sub-section(2)309, Sub-section(1), Section 311, Section 315(1), Section 325, Section 326(3), Section 329(1), Section 349, Section 351, Sub-section(2), Section 353, Section 354, Section 380 or Section 383(1). 3. For the purpose of leveling, metalling or paving, sewerage, draining, channeling and lightening any private street which the Commissioner with the sanction of the Standing Committee may be empowered under the provision of Section 305 level, metal or pave sewer drains, channel or light to his satisfaction or (1) for the purpose of removing altering or pulling down the building or work which the Commissionerwiththe approval of the Standing Committee may be empowered under the provisions of Sub-section (2) of Section 351 to remove alter or pull down (5) for the purpose of Section 381(2) to fill up cover over or drain off a well, provided that a delegation of power of entry under Section 4888 is to be understood so be subject in each case to strict observance of and compliance with the provisions and conditions prescribed by Clauses (a),(b),(c) and (d) so far as applicable.

Supervision Norms

Sr.No.	Designation	Supervision Norms
1	Asstt. Engineer (Maint)	To check at least 20 % of mass supply of materials and the contract bills. To check the estimate pertains to the repairs of municipal buildings, roads, etc. prepared by the Jr. Engineers & Sub Engineers.
2	Sub Engineer (Maint)	To supervise each work under him at the start, during execution, completion and frequently as necessary.
3	Junior Engineer (Maint)	To supervise each work under him at the start, during execution, completion and frequently as necessary.

Section 4 (1) (b) (iii)

The procedure followed in the decision-making process, including channels of supervision and accountability in the office of Assistant Engineer (Maintenance)

NAME OF THE ACTIVITY:- Action against unauthorized encroachments detected on roads / footpath.

Related provisions:-

Name of the Act/ Acts :- MMC Act 1888 section 314

Rules:-

Govt. Resolutions:-

Circulars:-

Office Orders:-

Sr. No.	Activity as said above	Steps involved	Time Limit	Authority role and responsibility of the employee / officer in connection with each activity. (mention designation)
1	Complaint Received from Public, Staff, from higher authority and others.	1. Site visit	Within 24 Hours	JE / SE
		2. Inspection Report		Junior Engineer
		3. Issue 314 Notice if required	Within 7 days	J.E./ S.E. /A.E.
		4. Arrange demolition by taking order from Asstt. Commissioner.	After expiry 48 Hours from order	J.E./ S.E. /A.E.
		5. Entry in demolition register		J.E.
		Demolition report		J.E./S.E.
		Filing of W.S/A.I.R. in court, in case of stay granted by court restraining MCGM to take further action.	As directed by legal dept.	Junior Engineer / Sub Engineer

NAME OF THE ACTIVITY: - BOTTLENECK :- Bottleneck means construction, narrowing, obstruction, congestion, block, partially/total blockage which leads to traffic congestion, traffic clogging problems started precipitating.

Related provisions:-

Name of the Act/ Acts

:-Rules:-

Govt. Resolutions:-

Circulars:- 1) AMC /ES/D 168 (Ch E/1876/DPC/Gen) Dated 25.02.2004 2) AMC/ES/9141/II dt.14.10.11

Office Orders:-

Sr. No.	Activity	Step involved	Time Limit	Authority role and responsibility of the employee / officer in connection with each activity. (mention designation)
1	Bottleneck	Preparation of Priority List of Bottlenecks.		Asstt. Commissioner/ A.E. (Maint.) of Ward
		Demarcation of Roads Sanctioned RL, DP Roads	Within 15 Days from the receipt of the information received from the Asstt. Commissioner	E.E. (T.C.) / A.E.(Survey) E.E. (D.P.) / A.E.(Survey)
		Collection of Basic Data		J.E. (Maint.)
		Preparation of Inventory		J.E.(Maint.) / S.E. (Maint.)
		Documents checking		S.E.(Maint.) / A.E. (Maint.)
		Proposals Scrutiny and submission to Competent Authority		Ward E.E.
		Sanction of Competent Authority		Additions M.C.'s of Zone
		Removal of Bottleneck		Asstt. Commissioner/ A.E. (Maint.) of Ward
		Roads/ S.W.D. Developments		Ch. Engg (Roads)/Ch. Engg (S.W.D.)
		Final Compliance to Zonal DMC/Jt. MC's		Asstt. Commissioner of Ward

NAME OF THE ACTIVITY:- E-tendering

Related provisions:-

Name of the Act/ Acts :-

Rules:-

Govt. Resolutions:-

Circulars:-

Office Orders:-

Sr. No.	Activity	Step involved	Time Limit	Authority role and responsibility of the employee / officer in connection with each activity. (mention designation)
1	E-tendering	Preparation of Estimate		J.E.
		Administrative approval		Ward Committee or DMC etc.
		Estimate is uploaded in SAP System in J.E. or SE_s ID (R3 Module)		S.E.
		BID is created in SRM Module E tendering.		S.E.
		BID is forwarded to E.E. Ward for approval & publishing on Municipal Website.		A.E. /S.E.
		Publish the Tender (SRM E tender login Approval)		Ward E.E.
		List of Bidder and letter to successful 1 st Bidder with 5 % contract amount to deposit with MCGM.		MCGM Website & A.E./S.E.
		Release P.O. Amount.		Account officer
		PO is created in SAP Module.		A.E.
		Create Contract in SAP System.		Ward E.E.
		PO is generated in SAP.		A.E.
		PO is released.		Ward E.E.
		PO printout is taken and issued to Bidder.		A.E.

NAME OF THE ACTIVITY:- Permission for trench

Related provisions:-

Name of the Act/ Acts:-

Rules:-

Govt. Resolutions:-

Circulars:-

- MGC/F/1835 dated 17.11.2007
- MGC/F/9974 dated 04.02.2013
- ChE/804/SR/Rds, Tr. & Br. Dated 05.02.2013
- ChE/525/SR/Roads dated
- ChE/11888/Rds/SR dated 09.03.2012
- ChE/1075/Roads dated 31.09.2012
- ChE/857/SR/Roads dated 18.02.2012
- Ch.Eng/727/SR/Rds dated 19.03.2010
- AMC/ES/8879/II dated 05.04.2013.
- Ch.E/396/SR/Rds & Tr. Dt.12.09.2013
- Ch.E/455/SR/Rds dated 09.10.2013

Office Orders:-

Sr. No.	Activity	Step involved	Time Limit	Authority role and responsibility of the employee / officer in connection with each activity. (mention designation)
1	Trench Permission	As per above circulars		

NAME OF THE ACTIVITY:- Permission for Ganapati Mandap

Related provisions:-

Name of the Act/ Acts:-

Rules:-

Govt. Resolutions:-

Circulars:-

- MDF/OD/8358/Gen datd11.06.2013
- MDF/9629/Gen dated 25.07.2008
- AA/ES/4528 dated 28.07.2008
- AA/ES/D/1971 dated 02.07.2007

AA/9269/Jahirat/201212 dated30.08.2012AMC/ES/8879/II dated
05.04.2013. Office Orders:-

Sr. No.	Activity	Step involved	Time Limit	Authority role and responsibility of the employee / officer in connection with each activity. (mention designation)
1	Ganapati Mandap Permission	Scrutiny of documents on receipt of application.	7 days	J.E./S.E.
		Site Inspection	7 days	J.E./S.E.
		To demand additional documents/NOC required from applicant, if any.	Within 15 days	J.E./S.E.
		Forward for Road Engineer's NOC.	Within 15 days	J.E./S.E.
		To issue demand letter & permission charges after receipt of all required documents.	Within 15 days	J.E./S.E.
		To issue permission on obtaining approval from competent authority. (Permission is refused if applicant has not submitted all required documents)		

Section 4 (1) (b) (iv)

Norms set for discharge of its functions in the office of Assistant Engineer (Maintenance)

Organizational targets (Annual)

S r. N o.	Designation	Activity	Financial Targets in Rs.	Time Limit
1	Asstt. Engineer (Maint.)	As mentioned in Section 4 (1)(b)(ii)	There are no financial targets set for this department. As mentioned earlier the work is carried out on day to day basis.	Time limit for each activity is as mentioned in Section 4(1)(b)(iii)
2	Sub Engineer (Maint.)	As mentioned in Section 4 (1)(b)(ii)	There are no financial targets set for this department. As mentioned earlier the work is carried out on day to day basis.	Time limit for each activity is as mentioned in Section 4(1)(b)(iii)
3	Junior Engineer (Maint.)	As mentioned in Section 4 (1)(b)(ii)	There are no financial targets set for this department. As mentioned earlier the work is carried out on day to day basis.	Time limit for each activity is as mentioned in Section 4(1)(b)(iii)

Section 4 (1) (b) (v)
The rules / regulation related with the functions of Assistant Engineer
(Maintenance)

Sr. No.	Subject	G.R. /Circular / Office order. Rule no. Notification etc. date.
1	Trench	<ul style="list-style-type: none"> • MGC/F/1835 dated 17.11.2007 • MGC/F/9974 dated 04.02.2013 • ChE/804/SR/Rds, Tr. & Br. Dated 05.02.2013 • ChE/525/SR/Roads dated • ChE/11888/Rds/SR dated 09.03.2012 • ChE/1075/Roads dated 31.09.2012 • ChE/857/SR/Roads dated 18.02.2012 • Ch.Eng/727/SR/Rds dated 19.03.2010 • AMC/ES/8879/II dated 05.04.2013. • Ch.E/396/SR/Rds & Tr. Dt.12.09.2013 • Ch.E./455/SR/Rds Dated 09.10.2013
2	Ganapati Mandap Permission	<ul style="list-style-type: none"> • MDF/OD/8358/Gen datd11.06.2013 • MDF/9629/Gen dated 25.07.2008 • AA/ES/4528 dated 28.07.2008 • AA/ES/D/1971 dated 02.07.2007 • AA/9269/Jahirat/201212 dated30.08.2012
3	Pothole	<ul style="list-style-type: none"> • Dy. Ch. Eng/1901/Rds(City) dated 15.06.2013 • MGC/F/1074 dated 06.07.2013 • CA/FDT/59 dated 16.03.2013
4	E-tendering	<ul style="list-style-type: none"> • CA/FRD/7 dated 17.05.2013 • CA/CPD/36 dated 03.11.2012
5	Pay & Park	<ul style="list-style-type: none"> • Dy.ChE/1380/Traffic of 23.05.2013
6	Shooting Permission	<ul style="list-style-type: none"> • CA/FRM/3 dated 10.04.2013
7	Mahatma Gandhi Pathkranti Yojana	<ul style="list-style-type: none"> • DMC/Special/OD/5468/dated06.03.2012 • DMC/Special/5447 dated03.03.2012 • AMC/ES/944/IV dated 31.03.2012
8	Bottleneck	<ul style="list-style-type: none"> • AMC/ES/9141/II dt.14.10.11

Section 4 (1) (b) (vi)

Statement of Categories of documents held in the office of Assistant Engineer (Maintenance)

Sr. No.	Subject	Type of Document file or register	File No. or Register No.	Particulars	Periodicity of Preservation (Proposed)
'C1' Class Record					
1	Demolition Register	Register		Details of demolitions of unauthorized work carried out under various sections of MMC Act	10 Years
'C' Class Record					
1.	R.T.I Register	Register		Details of application received under R.T.I.Act, replied/forwarded & transferred date.	5 Years
2	Work Orders	Documents		Details of work orders issued to contractor by department	5 Years
3	Measurement Books	Documents		Details of Measurements recorded in M.B.	5 Years
4	Payment Certificate	Documents		Details of Payments issued to the contractor	5 Years
5	Demand Notes & Permits	Documents		Details of Demand Notes & Permits issued to various utility agencies.	5 Years
6	Mandap Permission	Register		Details of Mandap Permission issued to various applicants.	5 Years
'D' Class Record					
1	Log sheets	Inward papers		Details of Applications/ complaints/ other documents received by department	01 Year
2.	Outward Register (Internal departments)	Outward papers		Details of Applications/ complaints/ other documents forwarded to Internal departments of 'S' Ward.	01 Year
3.	Outward Register (External correspondence)	Outward papers		Details of Applications/ complaints/ other documents forwarded to external departments of	01 Year

				MCGM/ Other Govt. authorities and correspondence with applicants/ complainants /citizens etc.	
4.	Complaint Register	Register		Orally complaint registered.	01 year
5.	RTI application & their reply (Except appeal cases)	Document		Details of application received under RTI Act & reply given to the same.	01 year
6.	First & second appeal made under RTI Act	Document		Details of First & second appeal made by applicant under RTI Act by the applicant against reply of Public Information Officer and/or order passed by First Appellate Authority	01 year
7	Monthly reports sent to various departments	Document		File papers containing monthly reports sent to various departments	01 years
8	Demolition of structures under MMC Act, MRTP Act & other action completed	Nasti		Nasti files containing papers pertaining to the notice action against structures demolished under MMC Act, MRTP Act & other actions.	01 year (after demolition)

Section 4 (1) (b) (vii)

Particulars of any arrangement that exists for consultation with the members of public in relation to the formulation of policy and implementation in the office of Assistant Engineer (Maintenance)

Sr. No.	Consultation for	Details of Mechanism	Under which legislation / rules / orders / GRs	Periodicity
1	Policy Details	Ward Committee	Nil	Once in a Month

Section 4 (1) (b) (viii)

Statement of Boards, Councils, Committees or Other bodies of office of Asstt Engineer (Maintenance)

Sr. No.	Name of the committee board / council / other bodies	Composition of committee Board council other bodies	Purpose of the committee Board/ Council/ other bodies	Frequency of meetings	Whether meeting open to public or not	Whether Minutes are available to public or not	Minutes available at.
1	Advance Locality Management (ALMI)	Nil	Nil	Nil	Nil	Nil	Nil
2	Local Area Citizens Committee (LACC)	Nil	Nil	Nil	Nil	Nil	Nil
3	Local Area Citizens Group (LACG)	Nil	Nil	Nil	Nil	Nil	Nil

Section 4 (1) (b) (ix)
Directory of the officers and employees in the office of Assistant Engineer (Maintenance) 'S' Ward.
&
Section 4 (1) (b) (x)
Details of remuneration of officers and employees in the office of Assistant Engineer (Maintenance) 'S' Ward.

PAYSHEET NO:- 6713 SALARY AS ON November, 2016.

Sr.No.	Designation	Name	Gr. Cd.	Date of Appointment in mcgm	Date of Appointment in s ward	PAY+GRP	DA	WC	CA	SPA	TA	HRA	TOTAL SALARY
1	SUB ENGINEER	JAGADALE DILIP SOPAN	B	11.07.1986	05.07.2010	23160+4600	34700		463		1200		64123/-
2	JR.ENGINEER	KARGUTKAR RAJESH	C	06.06.1995	20.06.2016	11890+4300	20238		463		600	4857	41885/-
3	CLERK	JAGTAP SACHIN NARAYAN	C	25.09.2006	17.06.2013	12090+2000	17613				600	4227	36530/-
4	CLERK	BHOIR PANKAJ KHEMCHANDRA	C	08.09.2006	26.02.2015	9430+2000	14288				600	3429	29747/-
5	ASST.ENGINEER	AHIRE DILIP SANTOSH	A	24.07.1997	29.03.2012	22980+5400	34600		463		1600	8304	72647/-
6	ASST.ENGINEER	VAGH VIJAYKUMAR T	A	11.07.2005	30.06.2016	21180+5400	33225		463		1600		62456/-
7	SUB ENGINEER	THAKARE SANJAYKUMAR G	B	11.06.1990	19.06.2015	22520+4600	33900		463		1200	8136	70819/-
8	SUB ENGINEER	JADHAV BIPIN ASHOK	B	12.03.2007	05.03.2014	15890+4600	25613		463		1200	6141	53913/-
9	SUB ENGINEER	PATIL SAMAR SUBHASH	B	20.06.1990	24.04.2012	15290+4600	22476		463		1200	5967	67613/-
10	SUB ENGINEER	PATIL SANJAYKUMAR EKNATH	B	09.10.2007	13.01.2014	15140+4600	26675		463		1200	5922	52000/-
11	SUB ENGINEER	VACANT											
12	STORE SUPVR	ADEKAR MANASVI SUBHASH	C	11.05.2006	11.08.2016	11550+4200	19688				600	4725	40763/-
13	HEAD CLERK	PATIL SARALA YOGRAJ	C	02.05.1985	08.03.2013	20960+4200	31450				600	7548	64758/-
14	JR.STENOGRPHR	GAMBHIRE NILESH DASHRATH	C	29.12.2011	29.12.2011	9110+2400	14388				600	3453	29951/-
15	TEL.OP.A GRADE	RAHATEKAR PRADNYA PRAKASH	C	14.05.1982	1988	19600+2000	27000				600	6480	55680/-
16	TEL.OP.A GRADE	PARDHI LAHU LAXMAN	C	23.12.1992	13.05.2014	14960+2000	21200			450	600	5088	44298/-
17	CLERK	SALUNKHE NILESH TUKARAM	C	29.01.2015	12.05.2016	6720+2000	10900				600	2616	22836/-

46	PEON	JADHAV BALRAM BABU	C	08.09.1986	27.06.2012	11970+1850	17275	115			600	4146	35956/-
47	PEON	UTEKAR VANITA APPAJI	C	23.10.1989	23.09.2010	12570+1900	18088	115			600	4341	37814/-
48	PEON	BETKAR SANJAY VITTHAL	C	01.08.1996	09.03.2015	11410+1900	16638	115			600	3993	34656/-
49	PEON	DEVKAR VISHAL RUPCHAND	C	05.10.2016	05.10.2016	5500+1850	9188	115			600	2205	19458/-
50	PEON	DAKHKHNI AJIJ MOHANI	C			13070+1850	18650	115			600	4476	38761/-
51	PEON	DETHE ASHA PRABHAKAR	C	23.05.2000	09.01.2012	10970+1850	16088	115			600	3861	33734/-
52	PEON	CHAVAN SAGEETA RAOSAHEB	C	19.11.2007	04.07.2011	8100+1850	12438	115			600	2985	26088/-
53	PEON	SAWANT SUREKHA UTTAM	C	05.08.2008	05.08.2008	7500+1850	11688	115			600	2805	24558/-
54	R.A	VACANT											

PAYSHEET NO:- 6714 SALARY AS ON November, 2016.

Sr. No.	DESGCP	NAME	EC No.	GRD	Date of Ap- pointment in MCGM	Date of Appointment in 'S' Ward	Basic	GRP	DA	WC	TWB	CA	SPA+R D2	TA	MMA	HRA	Total Salary
1	Plumber II	KAMBLE MAHADEO KRISHNA	3770979	D	01.07.1994	01.07.1994	11440	1900	15074	115	6			600		4002	33137
2	Mason-II	KAMAT VILAS DATTARAM	3463158	D	07.08.1986	07.08.1986	12700	1900	16498	115				600		4380	36193
3	Mistry-II	SAPTE RAMKRISHNA VISHRAM	3369553	D	01.03.1988	01.03.1988	12410	1900	16170	115	6	463		600		4293	35957
4	Mistry-II	MANE APPA MUKINDA	3369577	D	01.03.1988	01.03.1988	12420	1900	16182	115	6	463		600		4296	35982
5	Carpenter -II	CHALKE KRISHNA SITARAM	3680571	D	01.10.1991	01.10.1991	11980	1900	15684	115				600		4164	34443
6	Mukadam	GAIKWAD ANIL LAXMAN	1149960	D	09.06.1992	09.06.1992	11750	1850	15368	115		463		600		4080	34226
7	Mukadam	SHINDE ASHOK GOPICHAND	3369546	D	01.03.1988	01.03.1988	12030	1850	15684	115	6	463		600		4164	34912
8	Mukadam	MANDAVKER VISHNU VISH- RAM	3373516	D	01.03.1988	01.03.1988	10100	1850	13504	115	6			600		3585	29760
9	Mukadam	NAMAYE VASUDEO GOVIND	3373530	D	01.03.1988	01.03.1988	12420	1900	16182	115	6	463		600		4296	35982
10	Mukadam	KHEDEKAR RAGHUNATH NATHU	3608377	D	01.11.1990	01.11.1990	11180	1850	14724	115	6	463		600		3909	32847
11	Mukadam	NANGARE MANGAL GOGA	3680557	D	01.10.1991	01.10.1991	12120	1850	15786	115	6	463		600		4191	35131
12	Mukadam	MANE MARUTI PANDURANG	3745447	D	02.08.1993	02.08.1993	11600	1850	15199	115	6	463		600		4035	33868
13	Lab.	SABLE PRAKASH BABU	1512737	D	09.06.1992	09.06.1992	11750	1850	15368	115	6			600		4080	33769
14	Lab.	WAGHARI VITHAL GOVIND	1645538	D	25.03.1987	25.03.1987	11480	1800	15006	115	6			600		3984	32991
15	Lab.	MORE ASHOK RAJARAM	1652336	D	01.06.1994	01.06.1994	11620	1850	15221	115				600		4041	33447
16	Lab.	SHEJWAL KISHOR LAXMAN	1652415	D	01.06.1994	01.06.1994	11430	1850	15006	115				600		3984	32985
17	Lab	SHINDE PANDURANG MA- HADEV	1652484	D	03.06.1994	03.06.1994	11430	1850	15006	115	6			600		3984	32991
18	Lab.	JAYGADE PRAKASH MAHADEV	1652491	D	01.06.1994	01.06.1994	11440	1850	15018	115				600		3987	33010
19	Lab.	JABBARALI R A SHAIKH	1667857	D	01.09.1995	01.09.1995	11350	1850	14916	115	6			600		3960	32797

20	Lab.	SAKATE SANJIVAN TUKARAM	1667871	D	01.09.1995	01.09.1995	10990	1850	14509	115	6			600		3852	31922
21	Lab.	PARAB SHRIKRISHNA VASUDEV	1667888	D	01.09.1995	01.09.1995	11380	1850	14950	115	6			600		3969	32870
22	Lab.	KAMBLE BHIMRAO ISHWARA	1667936	D	01.09.1995	01.09.1995	11380	1850	14950	115				600		3969	32864
23	Lab.	KHANDAGALE SURESH NANA	1667943	D	01.09.1995	01.09.1995	10910	1800	14362	115				600		3813	31600
24	Lab.	VARADKAR RAJENDRA JAYVANT	1667950	D	02.09.1995	02.09.1995	10910	1800	14362	115				600		3813	31600
25	Lab.	SAWANT ASHOK DINKAR	1667981	D	01.09.1995	01.09.1995	11380	1850	14950	115	6			600		3969	32870
26	Lab.	WAKADE BHAGWAN MUKUND	1668054	D	01.09.1995	01.09.1995	11350	1850	14916	115				600		3960	32791
27	Lab.	GANGURDE RAMDAS WAMAN	1668092	D	01.09.1995	01.09.1995	11350	1850	14916	115				600		3960	32791
28	Lab.	TANDEL NANDKUMAR P.	1668119	D	01.09.1995	01.09.1995	11350	1850	14916	115				600		3960	32791
29	Lab.	RAJBHOJ MADHUKAR BHAURAO	1668133	D	01.09.1995	01.09.1995	11350	1850	14916	115				600		3960	32791
30	Lab.	BHUSHARI SUKHADEV MARUTI	1668157	D	01.09.1995	01.09.1995	10910	1800	14362	115				600		3813	31600
31	Lab.	MURARE VITHAL GANPAT	3255016	D	10.07.1983	10.07.1983	11930	1800	15515	115	6			600		4119	34085
32	Lab.	BOKEFODE SHARDA VASANT	3416338	D	01.03.1988	01.03.1988	11200	1800	14690	115	6			600		3900	32311
33	Lab.	JADHAV SUNITA SHANKAR	3542163	D	10.05.1989	10.05.1989	11590	1800	15131	115	6			600		4017	33259
34	Lab.	SONAWANE KANTA YAWAN	3590771	D	07.07.1990	07.07.1990	11480	1800	15006	115	6			600		3984	32991
35	Lab.	JADHAV UKHARDA ANSARAM	3608360	D	01.11.1990	01.11.1990	11480	1800	15006	115	6			600		3984	32991
36	Lab	GURAO DHONDU RAMCHAN- DRA	3674145	D	08.08.1991	08.08.1991	11690	1800	15244	115	6			600		4047	33502
37	Lab.	DHAMAL KRISHNA DAGDU	3674183	D	09.08.1991	09.08.1991	11750	1850	15368	115	6			600		4080	33769
38	Lab	NAMAYE CHANDRAKANT S	3682504	D	01.11.1991	01.11.1991	11750	1850	15368	115	6			600		4080	33769
39	Lab	MANE BHANUDAS JAYWANT	3717754	D	01.10.1992	01.10.1992	11970	1850	15617	115	6			600		4146	34304
40	Lab.	JADHAV SHYAM RAMCHAN- DRA	3745423	D	02.08.1993	02.08.1993	11830	1850	15458	115	6			600		4104	33963
41	Lab.	BHOLE RAJENDRA BHIMRAO	3769421	D	01.06.1994	01.06.1994	11440	1850	15018	115	6			600		3987	33016
42	Lab.	PITCHAD GHAMAGI NIVRUTI	3988303	D	07.07.2005	07.07.2005	7800	1800	10848	115				600		2880	24043

43	Lab.	BHOIR SUNIL BABURAO	3992555	D	09.09.2005	09.09.2005	7650	1800	10679	115				600		2835	23679
44	Lab.	SAYED M HAQUE S A HAYAT	3992562	D	01.04.2005	01.04.2005	9560	1800	12837	115				600		3408	28320
45	Lab.	SALVI SUDARSHAN C	3992579	D	01.04.2005	01.04.2005	9560	1800	12837	115				600		3408	28320
46	Lab.	TALPADE BHAGWAT MARUTI	3992603	D	01.04.2005	01.04.2005	9560	1800	12837	115				600		3408	28320
47	Lab.	KAMBALE NARESH MARUTI	4010489	D	04.05.2006	04.05.2006	7370	1800	10362	115				600		2751	22998
48	Lab.	KADAM RATNADEEP BABAN	4010496	D	04.05.2006	04.05.2006	7370	1800	10362	115				600		2751	22998
49	Lab.	DHOTRE VETIN SHANTARAM	4016423	D	16.05.2006	16.05.2006	7370	1800	10362	115				600		2751	22998
50	Lab.	SAWANT ABHIJIT ATMARAM	4056964	D	03.05.2007	03.05.2007	7100	1800	10057	115				1200		2670	22942
51	Lab.	KHANDAGALE AMOL ANKUSH	4121882	D	07.08.2007	07.08.2007	7100	1800	10057	115	6			600		2670	22348
52	Lab.	TELORE TUSHAR MILIND	4121899	D	07.08.2007	07.08.2007	7100	1800	10057	115	6			600		2670	22348
53	Lab.	CHANDRAMORE PRADEEP V	4121909	D	07.08.2007	07.08.2007	7100	1800	10057	115				600		2670	22342
54	Lab.	SALASKAR SUDHEER VISHNU	4121916	D	13.08.2007	13.08.2007	7100	1800	10057	115	6			600		2670	22348
55	Lab.	BHOIR HARISHCHANDRA T	4162025	D	19.12.2008	19.12.2008	6840	1800	9763	115				600		2592	21710
56	Lab.	THORAT VIJAY LAKHAMA	4162032	D	18.06.2008	18.06.2008	6840	1800	9763	115				600		2592	21710
57	Lab.	MHATRE JAGDISH RAGHUNATH	4162063	D	03.07.2008	03.07.2008	6840	1800	9763	115				600		2592	21710
58	Lab.	TARE PINTU SHANKAR	4162070	D	13.12.2008	13.12.2008	6840	1800	9763	115				600		2592	21710
59	Lab.	MATE VIKAS SAKHARAM	4179744	D	02.09.2008	02.09.2008	6840	1800	9763	115				600		2592	21710
60	Lab.	DHERE NAVNATH NIWAS	4198778	D	01.11.2008	01.11.2008	6840	1800	9763	115				1200		2592	22310
61	Lab.	ADE AVINASH HARIDAS	4308805	D	29.09.2011	29.09.2011	6090	1800	8916					600		2367	19773
62	Lab.	MADAVAI NILESH VASAT	4308836	D	01.10.2011	01.10.2011	6090	1800	8916					600		2367	19773
63	Lab.	LAVHATE SUNIL CHANDAR	4314578	D	14.10.2011	14.10.2011	5180	1300	7322					600		1944	16346
64	Lab.	AVHAD NARAYAN SHANKAR	4314585	D	12.10.2011	12.10.2011	6090	1800	8916					600		2367	19773
65	Lab.	SALUNKHE VITTHAL ARJUN	4314592	D	04.10.2011	04.10.2011	5180	1300	7322					600		1944	16346
66	Lab.	SOLANKI GEETA JAGDISH	4372688	D	05.11.2012	05.11.2012	4990	1300	7108					600		1887	15885
67	Lab.	UNHAWANE RAMDAS EKNATH	4418214	D	03.02.2014	03.02.2014	5630	1800	8396					600		2229	18655
68	Lab.	TUPE RAMESH YASHWANT	4446165	D	01.11.2014	01.11.2014	4620	1300	6690					600		1776	14986

69	Lab.	PATIL MUKESH MAHADEV	4459457	D	02.02.2015	02.02.2015	5200	1800	7910					600		2100	17610
70	Lab.	BHANUSHALI KETAN DINESH	4459464	D	04.02.2015	04.02.2015	5200	1800	7910					600		2100	17610
71	Lab.	BHANUSHALI ROHAN KUMAR	4459471	D	04.02.2015	04.02.2015	5200	1800	7910					600		2100	17610
72	Lab.	BHANUSHALI ABHIJIT PRAKAS	4459488	D	06.02.2015	06.02.2015	5200	1800	7910					600		2100	17610
73	Lab.	DUBHELE MARUTI ZIPARU	4462299	D	14.02.2015	14.02.2015	5200	1800	7910					600		2100	17610
74	Lab.	PADVAL RUPESH ANNA	4462309	D	13.02.2015	13.02.2015	5200	1800	7910					600		2100	17610
75	Lab.	BHANUSHALI AVINASH ASHOK	4462316	D	09.02.2015	09.02.2015	5200	1800	7910					600		2100	17610
76	Lab.	KOR NITESH RAJARAM	4462323	D	21.02.2015	21.02.2015	5200	1800	7910					600		2100	17610
77	Lab.	KARATKAR NIKHIL RAMESH	4462330	D	24.02.2015	24.02.2015	4440	1300	6486					600		1722	14548
78	Lab.	PATIL DEVANAND BALIRAM	4462347	D	21.02.2015	21.02.2015	4440	1300	6486					600		1722	14548
79	Lab.	PATIL DILIP DAGADU	4478742	D	21.08.2015	21.08.2015	5200	1800	7910					600		2100	17610
80	Pump Operator	KUMBHAR SHRIKANT SHIVAJI	3129157	D	22.04.1980	22.04.1980	12590	1900	16374	115				600		4347	35926
81	Rd. Roller Driver	Vacant		D													
82	Painter II	Vacant		D													
83	Mason II	Vacant		D													
84	Mistry II	Vacant		D													
85	Mistry II	Vacant		D													
86	Mistry II	Vacant		D													
87	Carpenter II	Vacant		D													
88	Carpenter II	Vacant		D													
89	Mukadam	Vacant		D													
90	Mukadam	Vacant		D													
91	Mukadam	Vacant		D													
92	Mukadam	Vacant		D													
93	Mukadam	Vacant		D													

94	Lab Cum Watchman	Vacant		D														
95	Lab Cum Watchman	Vacant		D														
96	Lab Cum Watchman	Vacant		D														
97	Lab.	Vacant		D														
98	Lab.	Vacant		D														
99	Lab.	Vacant		D														
100	Lab.	Vacant		D														
101	Lab.	Vacant		D														
102	Lab.	Vacant		D														
103	Lab.	Vacant		D														

PAYSHEET NO:- 6715 SALARY AS ON November 2016.

Sr. No.	DESGCP	NAME	EC No.	GRD	Date of Appointment in MCGM	Date of Appointment in 'S' Ward	Basic	GRP	DA	WC + UWA	CA	SPA+R D2	TA	MMA	HRA	Total Salary
1	MUKADAM	GURAV DATTARAM JAYRAM	3255164	D	04.10.1983	04.10.1983	9160	1850	12441	115+300			600		3303	27769
2	MUKADAM	JADHAV DAGADU BABAJEE	3290545	D	05.07.1983	05.07.1983	12790	1850	16543	115+300			600		4392	36590
3	MUKADAM	KHAN SHABBIR S	3290600	D	05.07.1983	05.07.1983	12360	1850	16057	115+300			600		4263	35545
4	MUKADAM	BHOSALE RAMDAS SAKHARAM	3290648	D	05.07.1983	05.07.1983	12580	1850	16306	115+300	463		600		4329	36080
5	MUKADAM	PASTE SURYAKANT GANGARAM	3290703	D	05.07.1983	05.07.1983	12350	1850	16046	115+300			600		4260	35521
6	MUKADAM	SHINDE LAXMAN NARAYAN	3290813	D	05.07.1983	05.07.1983	12580	1850	16306	115+300	463		600		4329	36080
7	MUKADAM	POL VINAYAK TUKARAM	3291027	D	05.07.1983	05.07.1983	9290	1850	12588	115+300			600		3342	28085
8	MUKADAM	SONAWANE UTTAM MURLIDHAR	3291302	D	27.05.1986	27.05.1986	13060	1850	16848	115+300			600		4473	37246
9	MUKADAM	BANDAGALE HARISHCHANDRA G	3344468	D	27.05.1986	27.05.1986	12360	1850	16057	115+300			600		4263	35545
10	MUKADAM	ADHAL DASHRATH G	3380400	D	05.09.1987	05.09.1987	12450	1850	16159	115+300	463		600		4290	35764
11	MUKADAM	MANJREKAR MAHENDRA J	3344516	D	27.05.1986	27.05.1986	12360	1850	16057	115+300			600		4263	35545
12	MUKADAM	SHAIKH ALTAF VAHIDMIYA	3416345	D	01.03.1988	01.03.1988	11880	1850	15515	115+300			600		4119	34379
13	MUKADAM	KUNCHIKORVE BABU C	3589993	D	18.07.1990	18.07.1990	11880	1850	15515	115+300			600		4119	34379
14	MUKADAM	BAUSKAR RAJENDRA BHAULAL	4162111	D	26.06.2008	26.06.2008	6840	1850	9820	115+300			600		2607	22132
15	MUKADAM	VACANT		D												
16	MUKADAM	VACANT		D												
17	MUKADAM	VACANT		D												
18	MUKADAM	VACANT		D												
19	MUKADAM	VACANT		D												
20	MUKADAM	VACANT		D												
21	DRAIN CLEANER	KASARE SADASHIV P	1273559	D	01.06.1994	01.06.1994	11160	1850	14701	115+300			600		3903	32629
22	DRAIN CLEANER	MOHITE HARIRAM S	1364422	D	16.12.1991	16.12.1991	11690	1800	15244	115+300			600		4047	33796

23	DRAIN CLEANER	NILE SIDHARTHA S	1409198	D	01.10.1992	01.10.1992	11160	1800	14645	115+300			600		3888	32508
24	DRAIN CLEANER	JAHDAV SHANTILAL LAXMAN	1486160	D	06.06.1994	06.06.1994	11050	1800	14521	115+300			600		3855	32241
25	DRAIN CLEANER	SABALE ARUN BABU	1486177	D	01.06.1994	01.06.1994	11440	1800	14961	115+300			600		3972	33188
26	DRAIN CLEANER	SHAIKH VAZIR BASHIR	1537712	D	01.08.1994	01.08.1994	11490	1850	15074	115+300			600		4002	33431
27	DRAIN CLEANER	SHELAR RAJARAM SAKHARAM	1544709	D	16.12.1991	16.12.1991	11690	1800	15244	115+300			600		4047	33796
28	DRAIN CLEANER	SHIGWAN KRISHNA GANGARAM	1546220	D	19.12.1991	19.12.1991	11750	1850	15368	115+300			600		4080	34063
29	DRAIN CLEANER	JADHAV BHIMRAO BANSHI	1652350	D	01.06.1994	01.06.1994	11050	1800	14521	115+300			600		3855	32241
30	DRAIN CLEANER	DALVI DEEPAK SHIVAJI	1652374	D	01.06.1994	01.06.1994	11440	1850	15018	115+300			600		3987	33310
31	DRAIN CLEANER	SAWANT MOHAN TUKARAM	1652446	D	05.07.1994	05.07.1994	11430	1850	15006	115+300			600		3984	33285
32	DRAIN CLEANER	KAMBLE SUNIL DADU	1667376	D	05.07.1994	05.07.1994	10710	1800	14136	115+300			600		3753	31414
33	DRAIN CLEANER	SAWANT VIJAY BHIWA	1668023	D	01.09.1995	01.09.1995	11350	1850	14916	115+300			600		3960	33091
34	DRAIN CLEANER	DCRUZ TRACY REMI	1668078	D	01.09.1995	01.09.1995	11350	1850	14916	115+300			600		3960	33091
35	DRAIN CLEANER	RAKSHE SHIVAJI D	1668140	D	01.09.1995	01.09.1995	11350	1850	14916	115+300			600		3960	33091
36	DRAIN CLEANER	SHAIKH ARIF KASAM	4020895	D	20.06.2006	20.06.2006	7370	1800	10362	115+300			600		2751	23298
37	DRAIN CLEANER	BANKAR SACHIN KISAN	4030438	D	20.09.2006	20.09.2006	7370	1800	10362	115+300			600		2751	23298
38	DRAIN CLEANER	KHEDKAR GOKUL SAHEBRAO	4162094	D	14.06.2008	14.06.2008	6840	1800	9763	115+300			600		2592	22010
39	DRAIN CLEANER	SHINDE KIRAN ARUN	4162104	D	20.06.2008	20.06.2008	6580	1800	9469	115+300			600		2514	21378
40	DRAIN CLEANER	SHINDE SUDAM LAXMAN	4167934	D	15.07.2008	15.07.2008	6840	1800	9763	115+300			600		2592	22010
41	DRAIN CLEANER	BHOIR CHANDRAKANT KRISHNA	4172527	D	23.07.2008	23.07.2008	6840	1800	9763	115+300			600		2592	22010
42	DRAIN CLEANER	PATIL KRISHNA GOVIND	4172534	D	23.07.2008	23.07.2008	6840	1800	9763	115+300			600		2592	22010
43	DRAIN CLEANER	CHAUGULE TATOBA MUKINDA	4308829	D	27.09.2011	27.09.2011	6090	1800	8916	115+300			600		2367	20188
44	DRAIN CLEANER	PATIL MAHENDRA SHIVRAM	4308867	D	22.09.2011	22.09.2011	5180	1300	7322	115+300			600		1944	16761
45	DRAIN CLEANER	DURGAVLE SANDESH GOPINATH	4314516	D	25.10.2011	25.10.2011	6090	1800	8916	115+300			600		2367	20188
46	DRAIN CLEANER	NAVGHARE VISHNU NANA	4314530	D	29.09.2011	29.09.2011	6090	1800	8916	115+300			600		2367	20188

71	LABOURER	BHOIR CHANDRAKANT NAMDEO	1058107	D	30.10.1991	30.10.1991	7260	1800	10238	115+300			600		2718	23031
72	LABOURER	GAIKWAD APPA BABURAO	1150157	D	01.10.1992	01.10.1992	11550	1850	15142	115+300			600		4020	33577
73	LABOURER	KUNCHIKURVE RAJU BHIMA	1299762	D	22.05.1995	22.05.1995	11090	1850	14622	115+300			600		3882	32459
74	LABOURER	PADYAKSHI M SHIVA	1421572	D	01.11.1991	01.11.1991	12120	1850	15786	115+300			600		4191	34962
75	LABOURER	THORAT KISAN BAPU	1486050	D	03.06.1994	03.06.1994	11440	1850	15018	115+300			600		3987	33310
76	LABOURER	BHALERAO ASHOK RAMCHANDRA	1486067	D	14.06.1994	14.06.1994	11620	1850	15221	115+300			600		4041	33747
77	LABOURER	SAWANT PRAKASH BABU	1486074	D	03.06.1994	03.06.1994	10840	1800	14283	115+300			600		3792	31730
78	LABOURER	THORAT CHANDRAKANT PETRAS	1486081	D	06.06.1994	06.06.1994	11440	1850	15018	115+300			600		3987	33310
79	LABOURER	KHOT BIPIN MADHUKAR	1486115	D	09.06.1994	09.06.1994	11440	1850	15018	115+300			600		3987	33310
80	LABOURER	PAWAR LAXMAN KALLAPPA	1486122	D	14.06.1994	14.06.1994	11440	1850	15018	115+300			600		3987	33310
81	LABOURER	SATHE LUKAS JOHNSON	1486139	D	03.06.1994	03.06.1994	11440	1800	14961	115+300			600		3972	33188
82	LABOURER	BORADE BABASAHEB NAMDEO	1486146	D	16.06.1994	16.06.1994	10910	1800	14362	115+300			600		3813	31900
83	LABOURER	AWASARAMAL GANGARAM K	1486153	D	03.06.1994	03.06.1994	11440	1850	15018	115+300			600		3987	33310
84	LABOURER	SAILKAR PRABHAKAR NARAYAN	1515792	D	10.07.1992	10.07.1992	11050	1800	14521	115+300			600		3855	32241
85	LABOURER	SARODE SUDHAKAR VISHVNATH	1524798	D	01.10.1992	01.10.1992	11970	1850	15617	115+300			600		4146	34598
86	LABOURER	SONAWANE MILIND PARSHURAM	1561432	D	18.09.192	18.09.192	11550	1800	15086	115+300			600		4005	33456
87	LABOURER	THOMBRE ATMARAM GANPAT	1652343	D	01.06.1994	01.06.1994	11440	1800	14961	115+300			600		3972	33188
88	LABOURER	VAIRAGAR DINKAR GENDAJI	1652381	D	01.06.1994	01.06.1994	10710	1800	14136	115+300			600		3753	31414
89	LABOURER	KHADE RAMCHANDRA TANAJI	1652525	D	03.06.1994	03.06.1994	11620	1850	15221	115+300			600		4041	33747
90	LABOURER	KADAM RAVINDRA MAHADEV	1652549	D	01.06.1994	01.06.1994	7260	1800	10238	115+300			600		2718	23031
91	LABOURER	UGHADE SUBHASH DHONDIBA	1652570	D	16.06.1994	16.06.1994	11440	1850	15018	115+300			600		3987	33310
92	LABOURER	GURAO SUDAM DEVBA	1652587	D	04.07.1994	04.07.1994	11440	1850	15018	115+300			600		3987	33310
93	LABOURER	PENDHARKAR VIJAY LAXMAN	1652886	D	01.06.1994	01.06.1994	11840	1850	15470	115+300			600		4107	34282
94	LABOURER	YELLAPA MANIKAM	1658428	D	13.12.1991	13.12.1991	11690	1800	15244	115+300			600		4047	33796

95	LABOURER	SHINDE KAILAS KUNDLIK	1667840	D	01.09.1995	01.09.1995	11330	1850	14893	115+300			600		3954	33042
96	LABOURER	ROOPVATE TATYABA BHIMAJI	1667895	D	01.06.1995	01.06.1995	11330	1850	14893	115+300			600		3954	33042
97	LABOURER	NARSAPPA V CHALVADI	1667905	D	01.09.1995	01.09.1995	11350	1850	14916	115+300			600		3960	33091
98	LABOURER	SAWARDEKAR PRASHNAT R	1668016	D	01.09.1995	01.09.1995	11000	1850	14521	115+300			600		3855	32241
99	LABOURER	GANGAVANE ROHIDAS VITHOBA	1668030	D	01.09.1995	01.09.1995	11350	1850	14916	115+300			600		3960	33091
100	LABOURER	PAWAR MILINDAR BHAU	1668061	D	01.09.1995	01.09.1995	11350	1850	14916	115+300			600		3960	33091
101	LABOURER	SHAIKH FARID GULAMRASUL	1668126	D	05.09.1995	05.09.1995	11090	1850	14622	115+300			600		3882	32459
102	LABOURER	BHOSALE SHRIMANT MARUTI	1668164	D	01.09.1995	01.09.1995	11380	1850	14950	115+300			600		3969	33164
103	LABOURER	PANHALKAR HASAN ABBAS	1668171	D	01.09.1995	01.09.1995	11350	1850	14916	115+300			600		3960	33091
104	LABOURER	LIYAKAT AFZALKHAN	1668944	D	02.04.1995	02.04.1995	8240	1800	11345	115+300			600		3012	25412
105	LABOURER	PAWAR ASHOK SHANKAR	3290411	D	04.10.1983	04.10.1983	11930	1800	15515	115+300			600		4119	34379
106	LABOURER	KHANDAGALE RAMESH D	3290442	D	04.10.1983	04.10.1983	11880	1800	15458	115+300			600		4104	34257
107	LABOURER	KALE RAOSAHEB MARUTI	3290631	D	05.07.1983	05.07.1983	12350	1800	15990	115+300			600		4245	35400
108	LABOURER	SAPTE VISHNU LAXMAN	3344523	D	27.05.1986	27.05.1986	12170	1850	15843	115+300			600		4206	35084
109	LABOURER	KATE SHRIKANT PITAMBER	3451881	D	10.09.1992	10.09.1992	11750	1850	15368	115+300			600		4080	34063
110	LABOURER	PAKHARE RAMESH RAMA	3463172	D	23.07.1988	23.07.1988	12030	1850	15684	115+300			600		4164	34743
111	LABOURER	NARVEKAR ANANT GANPAT	3463206	D	23.07.1988	23.07.1988	12030	1850	15684	115+300			600		4164	34743
112	LABOURER	JADHAV RAMESH BHAGOJI	3463244	D	23.07.1988	23.07.1988	12170	1800	15786	115+300			600		4191	34962
113	LABOURER	KADALE SUKHDEO DADU	3469642	D	23.07.1988	23.07.1988	8330	1800	11447	115+300			600		3039	25631
114	LABOURER	BONDRE TUKARAM RAMCHANDRA	3590788	D	07.07.1990	07.07.1990	11590	1800	15131	115+300			600		4017	33553
115	LABOURER	DALVI RAJARAM GANPAT	3608401	D	01.11.1990	01.11.1990	11880	1850	15515	115+300			600		4119	34379
116	LABOURER	RAKSHE DASHARTH SAHADU	3987955	D	21.07.2005	21.07.2005	7650	1800	10679	115+300			600		2835	23979
117	LABOURER	POTKULE JAYRAM GANGARAM	3992593	D	01.04.2005	01.04.2005	9560	1800	12837	115+300			600		3408	28620
118	LABOURER	DHANDE DAULAT ARJUN	3992610	D	01.04.2005	01.04.2005	9560	1800	12837	115+300			600		3408	28620

119	LABOURER	KAMBLE RANJAN BHIKAJI	3992627	D	01.04.2005	01.04.2005	9560	1800	12837	115+300			600		3408	28620
120	LABOURER	JADHAV RAVINDRA NATHURAM	3992634	D	01.04.2005	01.04.2005	9560	1800	12837	115+300			600		3408	28620
121	LABOURER	JAVED ABDUL LATEEF	4009869	D	28.04.2006	28.04.2006	7370	1800	10362	115+300			600		2751	23298
122	LABOURER	LONDHE MOHAN SHIVA	4009876	D	21.04.2006	21.04.2006	7370	1800	10362	115+300			600		2751	23298
123	LABOURER	SHINDE ATUL ROHIDAS	4009883	D	21.04.2006	21.04.2006	7370	1800	10362	115+300			600		2751	23298
124	LABOURER	SARVAGOD SHASHIKANT R	4014964	D	10.05.2006	10.05.2006	7370	1800	10362	115+300			600		2751	23298
125	LABOURER	SHINDE KAILAS SUKHADEO	4014971	D	17.05.2006	17.05.2006	7370	1800	10362	115+300			600		2751	23298
126	LABOURER	BABARIYA LALIT MULJI	4014988	D	16.05.2006	16.05.2006	7370	1800	10362	115+300			600		2751	23298
127	LABOURER	JADHAV MANOJ SONU	4014995	D	10.05.2006	10.05.2006	7370	1800	10362	115+300			600		2751	23298
128	LABOURER	SHAIKH MOHD SAMEER SALIM	4020912	D	01.06.2006	01.06.2006	7370	1800	10362	115+300			600		2751	23298
129	LABOURER	BHOIR DIPAK NAVSHA	4026657	D	24.06.2006	24.06.2006	7370	1800	10362	115+300			600		2751	23298
130	LABOURER	WARGHADE DNYANESHWAR L	4032739	D	05.10.2006	05.10.2006	7370	1800	10362	115+300			600		2751	23298
131	LABOURER	POL PRADEEP SHANTARAM	4056971	D	03.05.2007	03.05.2007	7370	1800	10362	115+300			1200		2751	23898
132	LABOURER	TOGARI ASHAI AH POSHANNA	4121875	D	22.08.2007	22.08.2007	7100	1800	10057	115+300			1200		2670	23242
133	LABOURER	CHAVREKAR NILESH DASHRATH	4156390	D	24.12.2008	24.12.2008	6840	1800	9763	115+300			600		2592	22010
134	LABOURER	CHAUGULE VIJAY GOPAL	4162087	D	06.06.2008	06.06.2008	6840	1800	9763	115+300			600		2592	22010
135	LABOURER	PALIT VINOD SHANIWAR	4162135	D	01.07.2008	01.07.2008	6840	1800	9763	115+300			600		2592	22010
136	LABOURER	SHINDE VISHVANATH KUNDLIK	4162142	D	03.07.2008	03.07.2008	6840	1800	9763	115+300			600		2592	22010
137	LABOURER	KONDAVALE NAMDEV TANAJI	4179720	D	13.08.2008	13.08.2008	6840	1800	9763	115+300			600		2592	22010
138	LABOURER	SATKAR SUBHASH C	4179737	D	02.08.2008	02.08.2008	6840	1800	9763	115+300			600		2592	22010
139	LABOURER	KANDHARE PRAVIN BABAN	4198785	D	01.11.2008	01.11.2008	6840	1800	9763	115+300			1200		2592	22610
140	LABOURER	SAWANT SACHIN GANPAT	4250610	D	25.11.2009	25.11.2009	6580	1800	9469	115+300			1200		2514	21978
141	LABOURER	JADHAV VISHAL BABU	4251202	D	03.11.2009	03.11.2009	6580	1800	9469	115+300			600		2514	21378
142	LABOURER	BHANDARI SACHIN MARUTI	4254573	D	01.01.2010	01.01.2010	6580	1800	9469	115+300			600		2514	21378

191	LABOURER	VACANT		D													
192	LABOURER	VACANT		D													
193	LABOURER	VACANT		D													
194	LABOURER	VACANT		D													
195	LABOURER	VACANT		D													
196	LABOURER	VACANT		D													
197	LABOURER	VACANT		D													
198	LABOURER	VACANT		D													
199	LABOURER	VACANT		D													
200	LABOURER	VACANT		D													

Section 4 (1) (b) (xi)

Details of allocation of budget and disbursement made in the office of the Assistant Engineer (Maintenance) 'S' Ward

Fund Code	Cost Center Code	Function Code	G.L.Code with Discription	Consumable Budg	Consumed Budget	Available Amoun	Current Budget	Commitment/Actu
11	4230350000	11101000000	210100101 Basic Pay	15,00,000.00	6,96,106.00	8,03,894.00	15,00,000.00	6,96,106.00
			210100102 Incentive bonus	1,01,000.00	0.00	1,01,000.00	1,01,000.00	0.00
			210100104 Grade Pay (Superior	3,69,000.00	1,99,360.00	1,69,640.00	3,69,000.00	1,99,360.00
			210100199 Others			0.00		
			210100201 Basic Pay	7,72,000.00	1,11,580.00	6,60,420.00	7,72,000.00	1,11,580.00
			210100202 Incentive bonus	91,000.00	0.00	91,000.00	91,000.00	0.00
			210100203 Salary Arrears			0.00		
			210100204 Grade Pay (Labour)	1,52,000.00	21,100.00	1,30,900.00	1,52,000.00	21,100.00
			210100299 Others			0.00		
			210200101 Dearness Allowance	23,36,000.00	10,66,497.00	12,69,503.00	23,36,000.00	10,66,497.00
			210200102 House Rent Allowanc	5,61,000.00	2,38,953.00	3,22,047.00	5,61,000.00	2,38,953.00
			210200103 Conveyance Allowanc	38,000.00	13,882.00	24,118.00	38,000.00	13,882.00
			210200104 Overtime allowances			0.00		
			210200105 LTA	80,000.00	30,750.00	49,250.00	80,000.00	30,750.00
			210200107 Mun Med Allowance	17,000.00	8,800.00	8,200.00	17,000.00	8,800.00
			210200113 Trv All for Sup & Sub.	84,000.00	35,375.00	48,625.00	84,000.00	35,375.00
			210200117 Sp. All-disabl-Woman			0.00		
			210200118 F. Planing Allowance	41,000.00	0.00	41,000.00	41,000.00	0.00
			210200219 Children Education	84,000.00	6,000.00	78,000.00	84,000.00	6,000.00
			210200199 Other Allowances	8,000.00	6,000.00	2,000.00	8,000.00	6,000.00
			210200201 Dearness Allowance	11,55,000.00	1,55,748.00	9,99,252.00	11,55,000.00	1,55,748.00
			210200202 House Rent Allowanc	2,77,000.00	39,804.00	2,37,196.00	2,77,000.00	39,804.00
			210200203 Conveyance Allowanc	13,000.00	1852	11,148.00	13,000.00	1852
			210200205 LTA	44,000.00	0	44,000.00	44,000.00	0
			210200206 Trans subsidy allowance			0.00		
			210200207 Mun Med Allowance	13,000.00	2400.00	10,600.00	13,000.00	2400.00
			210200213 Trv All for Sup & Sub.	48,000.00	6910.00	41,090.00	48,000.00	6910.00
			210200218 F. Planing Allowance	16,000.00	0.00	16,000.00	16,000.00	0.00
			210200219 Children Education	65,000.00	0.00	65,000.00	65,000.00	0.00
			210200299 Other Allowances	9,000.00	1280.00	7,720.00	9,000.00	1280.00

A' Budget Provision year 2015 - 16 (Previous Year) of ROAD. Deptt.

Fund Code	Cost Center Code	Function Code	G.L.Code with Discription	Consumable Budg	Consumed Budget	Available Amoun	Current Budget	Commitment/Actu
11	4230440000	22101010000	210100101 Basic Pay	2,76,000.00	1,16,420.00	1,59,580.00	2,76,000.00	1,16,420.00
			210100102 Incentive Bonus	26,000.00		26,000.00	26,000.00	
			210100104 Grade Pay (Superior	51,000.00	43,000.00	8,000.00	51,000.00	43,000.00
			210200101 Dearness Allowance	4,08,000.00	1,85,818.00	2,22,182.00	4,08,000.00	1,85,818.00
			210200102 House Rent Allowanc	98,000.00	47,826.00	50,174.00	98,000.00	47,826.00
			210200103 Conveyance Allowanc	5,000.00	4,436.00	564	5,000.00	4,436.00
			210200105 LTA	17,000.00		17,000.00	17,000.00	
			210200107 Mun Med Allowance	4,000.00	1,600.00	2,400.00	4,000.00	1,600.00
			210200113 Trv All for Sup&Sub	10,000.00	5,747.00	4,253.00	10,000.00	5,747.00
			210200118 F.Planning Allow-su	6,000.00		6,000.00	6,000.00	
			210200119 Children Edu Allow-	12,000.00		12,000.00	12,000.00	
210200199 Other Allowances	1,000.00		1,000.00	1,000.00				

A' Budget Provision year 2016 - 17 of ROAD. Deptt.

Fund Code	Cost Center Code	Function Code	G.L.Code with Discription	Consumable Budg	Consumed Budget	Available Amoun	Current Budget	Commitment/Actu
11	4230440000	22101010000	210100101 Basic Pay		264,000.00		264,000.00	264,000.00
			210100102 Incentive Bonus		27,000.00		27,000.00	27,000.00
			210100103 Salary Arrears		139,000.00		139,000.00	139,000.00
			210100104 Grade Pay (Superior		53,000.00		53,000.00	53,000.00
			210200101 Dearness Allowance		443,000.00		443,000.00	443,000.00
			210200102 House Rent Allowanc		95,000.00		95,000.00	95,000.00
			210200103 Conveyance Allowanc		4,000.00		4,000.00	4,000.00
			210200105 LTA		13,000.00		13,000.00	13,000.00
			210200113 Trv All for Sup&Sub		10,000.00		10,000.00	10,000.00
			210200118 F.Planning Allow-su		6,000.00		6,000.00	6,000.00
			210200119 Children Edu Allow-		17,000.00		17,000.00	17,000.00

A' Budget Provision year 2015 - 16 (Previous Year) of ROAD. Deptt.

Fund Code	Cost Center Code	Function Code	G.L.Code with Discription	Consumable Budg	Consumed Budget	Available Amoun	Current Budget	Commitment/Actu
11	4230440000	22103000000	210100101 Basic Pay	43,93,000.00	20,04,495.33	23,88,504.67	43,93,000.00	20,04,495.33
			210100102 Incentive Bonus	4,50,000.00	8,356.00	4,41,644.00	4,50,000.00	8,356.00
			210100104 Grade Pay (Superior	11,58,000.00	5,61,503.67	5,96,496.33	11,58,000.00	5,61,503.67
			210100199 Others					
			210100201 Basic Pay	87,99,000.00	40,76,049.00	47,22,951.00	87,99,000.00	40,76,049.00
			210100202 Incentive Bonus	10,68,000.00	79,682.00	9,88,318.00	10,68,000.00	79,682.00
			210100204 Grade Pay (Labour)	16,27,000.00	7,98,249.00	8,28,751.00	16,27,000.00	7,98,249.00
			210100299 Others	1,000.00	-0.05	1,000.05	1,000.00	-0.05
			210200101 Dearness Allowance	69,39,000.00	29,77,237.00	39,61,763.00	69,39,000.00	29,77,237.00
			210200102 House Rent Allowanc	16,66,000.00	7,22,774.00	9,43,226.00	16,66,000.00	7,22,774.00
			210200103 Conveyance Allowanc	93,000.00	45,114.00	47,886.00	93,000.00	45,114.00
			210200105 LTA	2,05,000.00	51,000.00	1,54,000.00	2,05,000.00	51,000.00
			210200107 Mun Med Allowance	65,000.00	24,433.00	40,567.00	65,000.00	24,433.00
			210200113 Trv All for Sup&Sub	2,34,000.00	1,16,406.00	1,17,594.00	2,34,000.00	1,16,406.00
			210200118 F.Planning Allow-su	84,000.00		84,000.00	84,000.00	
			210200119 Children Edu Allow-	1,68,000.00	6,000.00	1,62,000.00	1,68,000.00	6,000.00
			210200199 Other Allowances	1,000.00	456	544	1,000.00	456
			210200201 Dearness Allowance	1,30,32,000.00	57,00,329.00	73,31,671.00	1,30,32,000.00	57,00,329.00
			210200202 House Rent Allowanc	31,28,000.00	14,68,699.00	16,59,301.00	31,28,000.00	14,68,699.00
			210200203 Conveyance Allowanc	56,000.00	23,617.00	32,383.00	56,000.00	23,617.00
			210200204 Overtime Allowance	76,000.00	75,743.05	256.95	76,000.00	75,743.05
			210200205 LTA	3,59,000.00	1,15,500.00	2,43,500.00	3,59,000.00	1,15,500.00
			210200207 Mun Med Allowance	1,79,000.00	72,046.00	1,06,954.00	1,79,000.00	72,046.00
			210200211 Prted Der Allo (Lab		-1,678.00	1,678.00		-1,678.00
			210200213 Transport Allowance	5,37,000.00	2,49,508.00	2,87,492.00	5,37,000.00	2,49,508.00
			210200218 Family Planning All	1,23,000.00		1,23,000.00	1,23,000.00	
			210200219 Children Education	4,72,000.00	6,484.00	4,65,516.00	4,72,000.00	6,484.00
			210200299 Other Allowances	4,41,000.00	37,532.00	4,03,468.00	4,41,000.00	37,532.00
			210209913 Uniforms	1,13,000.00	87,559.00	25,441.00	1,13,000.00	87,559.00
			210209915 Contrbn-Int 4% towr	82,000.00	-1,202.00	83,202.00	82,000.00	-1,202.00

A' Budget Provision year 2016 - 17 of ROAD. Deptt.

Fund Code	Cost Center Code	Function Code	G.L.Code with Discription	Consumable Budg	Consumed Budget	Available Amoun	Current Budget	Commitment/Actu
11	4230440000	22103000000	210100101 Basic Pay	4,252,000.00	3,849,988.79	402,011.21	4,252,000.00	3,849,988.79
			210100102 Incentive Bonus	560,000.00	560,000.00		560,000.00	560,000.00
			210100103 Salary Arrears	2,088,000.00		2,088,000.00	2,088,000.00	
			210100104 Grade Pay (Superior	1,093,000.00	995,563.33	97,436.67	1,093,000.00	995,563.33
			210100201 Basic Pay	8,184,000.00	5,531,588.25	2,652,411.75	8,184,000.00	5,531,588.25
			210100202 Incentive Bonus	1,350,000.00	1,155,382.00	194,618.00	1,350,000.00	1,155,382.00
			210100203 Salary Arrears	1,392,000.00		1,392,000.00	1,392,000.00	
			210100204 Grade Pay (Labour)	1,676,000.00	1,058,223.40	617,776.60	1,676,000.00	1,058,223.40
			210200101 Dearness Allowance	7,482,000.00	6,143,341.59	1,338,658.41	7,482,000.00	6,143,341.59
			210200102 House Rent Allowanc	1,603,000.00	1,449,910.24	153,089.76	1,603,000.00	1,449,910.24
			210200103 Conveyance Allowanc	81,000.00	63,303.59	17,696.41	81,000.00	63,303.59
			210200105 LTA	148,000.00	47,250.00	100,750.00	148,000.00	47,250.00
			210200107 Mun Med Allowance	1,000.00	800	200	1,000.00	800
			210200113 Trv All for Sup&Sub	227,000.00	226,163.46	836.54	227,000.00	226,163.46
			210200118 F.Planning Allow-su	74,000.00		74,000.00	74,000.00	
			210200119 Children Edu Allow-	113,000.00		113,000.00	113,000.00	
			210200133 SPECIAL ALLOW(SUP)	1,000.00	450	550	1,000.00	450
			210200195 STITCHING ALLOW(SUP	1,000.00	900	100	1,000.00	900
			210200199 Other Allowances	4,000.00	3,102.57	897.43	4,000.00	3,102.57
			210200201 Dearness Allowance	13,802,000.00	8,258,338.79	5,543,661.21	13,802,000.00	8,258,338.79
			210200202 House Rent Allowanc	2,958,000.00	1,965,747.30	992,252.70	2,958,000.00	1,965,747.30
			210200203 Conveyance Allowanc	35,000.00	18,972.29	16,027.71	35,000.00	18,972.29
			210200205 LTA	297,000.00	133,500.00	163,500.00	297,000.00	133,500.00
			210200207 Mun Med Allowance	3,000.00	2,400.00	600	3,000.00	2,400.00
			210200213 Transport Allowance	567,000.00	349,632.26	217,367.74	567,000.00	349,632.26
			210200218 Family Planning All	127,000.00	3,558.00	123,442.00	127,000.00	3,558.00
			210200219 Children Education	345,000.00	42,582.00	302,418.00	345,000.00	42,582.00
			210200224 WASHING CHARGES(LAB	10,000.00	8,365.06	1,634.94	10,000.00	8,365.06
			210200299 Other Allowances	168,000.00	62,376.32	105,623.68	168,000.00	62,376.32
			210209913 Uniforms	113,000.00		113,000.00	113,000.00	
			210209915 Contrbn-Int 4% towr	29,000.00		11,820.00	17,180.00	29,000.00

A' Budget Provision year 2015-16 (Previous Year) of SWD. Deptt.

Fund Code	Cost Center Code	Function Code	G.L.Code with Discription	Consumable Budg	Consumed Budget	Available Amoun	Current Budget	Commitment/Actu
11	4230330000	22500000000	210100101 Basic Pay	8,49,000.00	1,48,480.00	7,00,520.00	8,49,000.00	1,48,480.00
			210100102 Incentive Bonus	78,000.00		78,000.00	78,000.00	
			210100104 Grade Pay (Superior	1,89,000.00	49,400.00	1,39,600.00	1,89,000.00	49,400.00
			210100199 Others					
			210100201 Basic Pay	1,83,75,000.00	46,93,126.56	1,36,81,873.44	1,83,75,000.00	46,93,126.56
			210100202 Incentive Bonus	17,54,000.00	37,431.00	17,16,569.00	17,54,000.00	37,431.00
			210100204 Grade Pay (Labour)	35,04,000.00	9,26,279.70	25,77,720.30	35,04,000.00	9,26,279.70
			210100299 Others		-1.07	1.07		-1.07
			210200101 Dearness Allowance	12,97,000.00	2,29,641.00	10,67,359.00	12,97,000.00	2,29,641.00
			210200102 House Rent Allowanc	3,12,000.00	59,364.00	2,52,636.00	3,12,000.00	59,364.00
			210200103 Conveyance Allowanc	28,000.00	4,849.00	23,151.00	28,000.00	4,849.00
			210200105 LTA	47,000.00	6,000.00	41,000.00	47,000.00	6,000.00
			210200107 Mun Med Allowance	12,000.00	2,200.00	9,800.00	12,000.00	2,200.00
			210200113 Trv All for Sup&Sub	36,000.00	10,284.00	25,716.00	36,000.00	10,284.00
			210200118 F.Planning Allow-su	10,000.00		10,000.00	10,000.00	
			210200119 Children Edu Allow-	59,000.00		59,000.00	59,000.00	
			210200201 Dearness Allowance	2,73,48,000.00	66,40,682.00	2,07,07,318.00	2,73,48,000.00	66,40,682.00
			210200202 House Rent Allowanc	65,64,000.00	16,95,296.00	48,68,704.00	65,64,000.00	16,95,296.00
			210200203 Conveyance Allowanc	92,000.00	5,280.00	86,720.00	92,000.00	5,280.00
			210200205 LTA	5,76,000.00	2,28,786.00	3,47,214.00	5,76,000.00	2,28,786.00
			210200207 Mun Med Allowance	3,93,000.00	1,04,461.00	2,88,539.00	3,93,000.00	1,04,461.00
			210200211 Prted Der Allo (Lab		-972	972		-972
			210200213 Transport Allowance	12,53,000.00	2,95,903.00	9,57,097.00	12,53,000.00	2,95,903.00
			210200218 Family Planning All	2,39,000.00	420	2,38,580.00	2,39,000.00	420
			210200219 Children Education	10,82,000.00	6,000.00	10,76,000.00	10,82,000.00	6,000.00
			210200299 Other Allowances	8,88,000.00	1,96,226.81	6,91,773.19	8,88,000.00	1,96,226.81
			210209915 Contrbn-Int 4% towr	1,81,000.00	11,975.00	1,69,025.00	1,81,000.00	11,975.00

A' Budget Provision year 2016 - 17 of SWD. Deptt.

Fund Code	Cost Center Code	Function Code	G.L.Code with Discription	Consumable Budg	Consumed Budget	Available Amoun	Current Budget	Commitment/Actu
11	4230330000	22500000000	210100101 Basic Pay	868,000.00	466,924.20	401,075.80	868,000.00	466,924.20
			210100102 Incentive Bonus	81,000.00	70,000.00	11,000.00	81,000.00	70,000.00
			210100104 Grade Pay (Superior	193,000.00	104,600.00	88,400.00	193,000.00	104,600.00
			210100201 Basic Pay	17,018,000.00	8,177,106.33	8,840,893.67	17,018,000.00	8,177,106.33
			210100202 Incentive Bonus	2,106,000.00	1,686,133.00	419,867.00	2,106,000.00	1,686,133.00
			210100204 Grade Pay (Labour)	3,571,000.00	1,602,167.99	1,968,832.01	3,571,000.00	1,602,167.99
			210200101 Dearness Allowance	1,484,000.00	728,915.75	755,084.25	1,484,000.00	728,915.75
			210200102 House Rent Allowanc	319,000.00	171,457.25	147,542.75	319,000.00	171,457.25
			210200103 Conveyance Allowanc	28,000.00	15,234.18	12,765.82	28,000.00	15,234.18
			210200105 LTA	45,000.00	6,750.00	38,250.00	45,000.00	6,750.00
			210200113 Trv All for Sup&Sub	37,000.00	20,999.99	16,000.01	37,000.00	20,999.99
			210200118 F.Planning Allow-su	16,000.00		16,000.00	16,000.00	
			210200119 Children Edu Allow-	60,000.00		60,000.00	60,000.00	
			210200199 Other Allowances	9,000.00		9,000.00	9,000.00	
			210200201 Dearness Allowance	28,824,000.00	12,525,591.52	16,298,408.48	28,824,000.00	12,525,591.52
			210200202 House Rent Allowanc	6,177,000.00	2,959,432.40	3,217,567.60	6,177,000.00	2,959,432.40
			210200203 Conveyance Allowanc	93,000.00	36,787.61	56,212.39	93,000.00	36,787.61
			210200205 LTA	681,000.00	258,750.00	422,250.00	681,000.00	258,750.00
			210200207 Mun Med Allowance	4,000.00	3,964.00	36	4,000.00	3,964.00
			210200213 Transport Allowance	1,231,000.00	551,934.99	679,065.01	1,231,000.00	551,934.99
			210200218 Family Planning All	329,000.00	13,545.99	315,454.01	329,000.00	13,545.99
			210200219 Children Education	1,561,000.00	34,107.00	1,526,893.00	1,561,000.00	34,107.00
			210200224 WASHING CHARGES(LAB	15,000.00	14,375.00	625	15,000.00	14,375.00
			210200299 Other Allowances	903,000.00	420,292.99	482,707.01	903,000.00	420,292.99
210209915 Contrbn-Int 4% towr	35,000.00	34,046.00	954	35,000.00	34,046.00			

Section 4 (1) (b) (xi)

**Details of allocation of budget and disbursement made in the office of the
Assistant Engineer (Maintenance) 'S' Ward for the year 2014-15.**

mene³³ekeÀ Dee³egkelle `Sme` efJeYeeieeleerue meve 2014-15 @es Deboepe He\$ekeÀ

F. CODE	D. CODE	Cost center code	Function code	G.L. Code	Details	Provision 2014-2015	EXP.
UNFORSEEN							
11	12	4230120000	0000000000	230810104	Unforseen	6,000,000.00	5381042
				230810105	Unforseen	6,000,000.00	5187930
				230810106	Unforseen	6,000,000.00	4931452
				230810107	Unforseen	6,000,000.00	5850212
				230810108	Unforseen	6,000,000.00	5442569
				230810109	Unforseen	6,000,000.00	5191029
				230810110	Unforseen	6,000,000.00	5478306
				230810111	Unforseen	6,000,000.00	5406427
				230810112	Unforseen	6,000,000.00	2690909
				230810113	Unforseen	6,000,000.00	2448783
				230810114	Unforseen	6,000,000.00	3751399
				230810115	Unforseen	6,000,000.00	5402645
230810116	Unforseen	6,000,000.00	4376216				
MUNICIPAL COMMOSSIONER							
11	12	4230120000	0020100000	501200005	WardCommittee	1300000	103815051
				501200007	Uninterrupted	1,500,000.00	0
				501201346	Civic faci.B.no.106	5000000	4013398
				501201387	Tagore ngr B.no.113	2500000	1103782
				501201388	Civic sGandhi b.no.113	1250000	786144
				501201389	Civic Shivaji B.no.113	1250000	0
				501201390	Valmiki B.no.113	1250000	0
				501201391	Tagore ngr 1to 6 B.no.113	1250000	0
				501201392	Hariyali vill.B.no.113	1250000	0
				501201393	Kanjur ngr B.no.113	1250000	1043850
				501201425	Basioc Civic B.no.108	7500000	6282478
				501201426	Basioc Civic B.no.109	7500000	7487937
				501201448	Basic civic b.no.106	15000000	14999999

				501201458	Basic civic B.no.105	2500000	1883921
				501201460	Basioc Civic B.no.107	17500000	16760830
				501201502	Basioc Civic B.no.104	5000000	4999999
11	12	4230120000	77800000000	501200085	Development of Gaonthan at Hariyali	2500000	1621826
				501200088	Development of Gaonthan at Bhandup	2500000	2207294
				501200089	Development of Gaonthan at Kanjur	2500000	1670813
				501200151	Tirandaaz Gaonthan	2500000	1492695
				501200152	Paspoli Village	2500000	2080985
				501200672	Imp. Of Gaonthan	2500000	2416097
				501200094	Adiwasipada	550000	382703
				SWD			
11	33	4230330000	22500000000	230500501	Gen. Civil repairs	6,250,000.00	5172732
City Engineer							
11	35	4230350000	00214000000	230520101	Gen. Civil repairs	436000	408518
				230520301	Gen. Civil repairs	1804000	573896
				230529901	Gen. Civil repairs	1721000	0
				230801203	Demol unsaf Pvt bul	2000000	0
				230801204	Demol unsaf MCGM Bl	2500000	1890500
				230801205	Prope to Dilapid Bldg	4000000	222000
ROADS & TRAFFIC							
11	44	42304400000	22103000000	230500112	Footpath	5,000,000.00	1481549
B-Budget							
23	35	4230350000	77604000000	230500101	Gen Civil Repairs	41351000	37569946
				230500601	Gen Civil Repairs	933000	0
				230803503	Desiliting Septic Tan	10101000	10089585
				230511301	Public Toilet P.S.C. Blocks/ A.P. Blocks	60657000	53257584
				503500974	Prov.for appoint.Archite	1500000	1279900
				503501170	Retaining wall 's' ward	10,000,000	4940506
				503501291	Provision for improvement of Slum in ward No. 105	10000000	9576127
				503501292	Provision for improvement of Slum in ward No. 106	5400000	5326032

			503501293	Provision for improvement of Slum in ward No. 110	25000000	23618567
			503501294	Provision for improvement of Slum in ward No. 111	5400000	3927575
			503501295	Provision for improvement of Slum in ward No. 113	15400000	11916020
			503501296	Provision for improvement of Slum in ward No. 114	5400000	4641044
			503501297	Surya nagar B.no.114	10000000	7380089
			503501298	Path tagore ngr B.no.114	10000000	8626857
			503501299	Imp.slum B.no.114	5000000	3897417
			503501300	Imp.slum B.no.115	8500000	7163569

Section 4 (1) (b) (xii)

Manner of execution of subsidy program in the office of Assistant Engineer (Maintenance)

Sr. No	Name and Address of Beneficiary	Amount of Subsidy / Concession Sanctioned
1	NIL	NIL

Section 4 (1) (b) (xiii)

Particulars of recipients of concessions, permits or authorizations granted in the office of Assistant Engineer (Maintenance)

Sr. No	Name of the license	License no.	Issued on	Valid up to	General Conditions	Details of the license
	NIL	N.A.	N.A.	N.A.	N.A.	N.A.

Section 4 (1) (b) (xiv)

Details of information available in electronic form in the office of Assistant Engineer (Maintenance)

.Sr. No.	Type of Documents file/Register	Sub Topic	In which Electronic Format it is kept	Person in Charge
	Nil	Nil	Nil	

Section 4 (1) (b) (xv)

Particulars of facilities available for citizen for obtaining information in the office of Assistant Engineer (Maintenance)

Types of facilities-

- Information about facilities for inspection of record.

Sr.No.	Type of Facility	Timings	Procedure	Location	Peron in Charge
1.	Inspection of Record	3.00 p.m. to 5.00 p.m on Monday and Friday (except holidays) with prior appointment only.	For inspection of records no fee for first hour will be charged, however fee of Rs.5/- for each 15 minutes or fraction thereof will be charged thereafter.	Office of Asstt. Engineer, Maintenance Department, , 1 st Floor, 'S' ward office, Bhandup (West) Mumbai-78	Asstt. Engineer, Maintenance 'S' Ward.

Section 4 (1) (b) (xvi)

**Details of public information officers / APIO's / appellate authority in the jurisdiction of
(Public authority) in the office of Assistant Engineer (Maintenance)**

Appellate Authority

Sr. No.	Name of Appellate Authority	Designation	Jurisdiction as Appellate authority	PIO Reporting	E mail id for purpose of RTI
1	Shri. Girish Lokhande	Ward Ex Engineer	_S' Ward	A.E.(Maintenance) _S' Ward	-

PIO

Sr. No.	Name of PIO	Designation	Jurisdiction as PIO under RTI	Address / Ph. No.	E mail id for purpose of RTI	Appellate authority
1	Shri. Dilip Ahire	Asstt. Engineer (Maint.) II	Electro I ward no. 110,111, 112, 113, 114, 115 & 116	Office of Asstt. Engineer, Maintenance Department, 1 st Floor, _S' ward office, Bhandup (West) Mumbai-400 078 Contact No. :- 022 25947571 Extn :- 241	ae02mt.s@mcgm.gov.in	Shri. Girish Lokhande, Executive Engineer _S' Ward, 1 st floor, Brihanmumbai Mahanagar Palika Office, Lala L.B.S.Marg, Bhandup (West), Mumbai-400 078. Ph.022-25947571 Extn 244
2	Shri. Rajendra Pagar	Asstt. Engineer (Maint.) I	Electro I ward no. 104,105, 106, 107, 108, & 109	Office of Asstt. Engineer, Maintenance Department, 1 st Floor, _S' ward office, Bhandup (West) Mumbai-400 078 Contact No. :- 022 25947571 Extn :- 249	Ae01mt.s@mcgm.gov.in	Shri. Girish Lokhande, Executive Engineer _S' Ward, 1 st floor, Brihanmumbai Mahanagar Palika Office, Lala L.B.S.Marg, Bhandup (West), Mumbai-400 078. Ph.022-25947571 Extn 244

Section 4 (1) (b) (xvii)

Any other information of Public use

MAJOR ROADS in 'S' Ward

Sr. no	Name of the Road	Category of the road			Length of the Road Mts.	Width of the Road Mts.			Area of road excluding Footpath in Sq.M.
1	2	3	4	5	6	7	8	9	
1	Tilak Nagar road	--	Paver	Asphalt	500	--	10		5000
2	Sangitkar Sudhir Phadke Marg	C.C.360 Rmt.	Paver160 Rmt	Asphalt960 Rmt	1480	3	15.3		22644
3	Khandelwal Marg	--	Paver		870	--	13.44		11692
4	Jaideep Nagar Road	--		Asphalt	450	--	9.15		4117.5
5	Kamal Sagar Road – 90'	--		Asphalt	630	--	27.44		18933.6
6	Udayshree Society Road	--	Paver		520	--	13.4		6968
7	Bhandupeshwar Kund Road	--	Paver		225	--	9.15		2058.75
8	Bapusaheb Juvekar Marg	--	Paver		675	--	9.15		6176.2
9	M.D.Keni Marg	--		Asphalt	970	--	13.7		13289
10	H.D. Koparkar Marg	--	Paver		330	3	9		3960
11	Ram Rahim Udyog Nagar Road	--	Paver		380	--	9		3420
12	Gurudwara Dashmesh Marg	--		Asphalt	475	--	9		4275
13	Dutta Mandir Road	--	Paver50 Rmt	Asphalt 100 Rmt.	150	--	9		1350
14	Shankar Mandir Road	--	Paver		100	--	9.18		918
15	Veer Savarkar Marg	--		Asphalt	2090	2	16.7		39083
16	Khandelwal Cross Road	--	Paver		80	--	9		720
17	Mulund	--		Asphalt	3250	--	30		97500

	Goregaon Link Road (Dr. Hedgewar Chowk to E.E. Highway)								
18	Mulund Goregaon Link Road (Dr. Hedgewar Chowk to Bhandup Complex)	--		Asphalt	1800	--	18.3		32940
19	Nrutyanjali Marg	--	Paver		195	--	12		2340
20	90'D.P.Road	--		Asphalt	128	--	27		3456
21	Khot road	C.C.		Asphalt	323	--	13.4		4328
22	Bhandup Station Road / Sant Shiromani Marg	C.C.			390	2	23		9750
23	L.B.S. Marg	C.C.			6700	3	27.48		195216
24	Subhash Road	--	Paver 150 Rmt	Asphalt 927 Rmt.	1077	--	15		2360
25	Quarry Road	--	Paver		310	--	20		16155
26	Sardar Pratap Singh Road / JangalMangal Road	C.C.		Asphalt	705	3	17		14100
27	Tank Road	C.C. 700 Rmt.	Paver 300 Rmt		1000	2	9		11000
28	Jolly Marg	C.C.		Asphalt 100 Rmt.	480	3	15.3		8784
29	Kanjur Village Road	--	Paver 90 Rmt.		190	--	18.3		3477
30	Road from Bldg. No. 174 to 186	--		Asphalt	140	--	12		1680
31	Atmaram Surve Marg	--		Asphalt	1047	--	13		13611
32	Swayambhu Hanuman Mandir Marg	--		Asphalt	1218	--	11.2		13641
33	Road from Bldg. No. 80 to 78	--		Asphalt	71	--	9		639
34	Road from Bldg. No. 128 to 127	--		Asphalt	140	--	12		1680
35	Road from Bldg. No. 113 to 111	--		Asphalt	42	--	10		420
36	Road from Bldg. No. 120 to 106	--		Asphalt	237	--	9		2133

37	Road from Bldg. No. 98 to 94	--		Asphalt	439	--	40.6		2019.4
38	Road from Bldg. No. 90 to 190	--		Asphalt	208	--	10.9		2267.2
39	Road from Bldg. No. 90 to end	--		Asphalt	122	--	9.4		1146.8
40	Road from Bldg. No. 89 to end	--		Asphalt	505	--	11.2		5656
41	Road from Bus route 397 to Circle	--		Asphalt	117	--	11.5		1345.5
42	Road from Bldg. No. 57 to 59	--		Asphalt	92.8	--	10		928
43	Swami Narayan Road	--		Asphalt	288	--	12.2		
44	Dattaram (Aba) Hari Rane	--		Asphalt	117.7	--	13.15		1547.76
45	Ashok Narayan Pangare	--		Asphalt	51.3	--	13.15		674.6
46	Ramakant Deshmukh to Bldg. No. 27 Road	C.C.			225	--	11.45		2576.25
47	Bldg. NO. 29 to Bldg. No. 21	C.C.			218.5	--	12.5		2731
48	Shivaji Karbhari Avhad	--		Asphalt	414.3	--	9.87		4089.14
49	Samaj Mandir Road	--	Paver		142.9	--	12.25		1750.53
50	Bldg. No. 409 to B.S.E.S. Office	--		Asphalt	134.6	--	11.1		1494.06
51	Vidya Mandir Road	--		Asphalt	147	--	11.56		1697.85
52	Road Behind Ambedkar Hosp to Vidyamandir School Road	--		Asphalt	95.1	--	11.9		1131.69
53	R.D. Bhandari Marg	--		Asphalt	210.6	--	9.4		1979.64
54	Road Parallel to Transmission Nalla	--		Asphalt	210.6	--	10		2106
55	Shaneshwar Mandir Road			Asphalt	1357.1	--	18.15		24958.1
56	Ramakant Deshmukh Marg				228.2	--	11.2		2555.84

57	Post Office Road (Haribhau Bhikaji Bhogale Road)				147	--	15.25		2241.75
58	Gaikwad Udyan (South)		Paver		147.8	--	9		1330.2
59	Road Opp. to Police Chowki at T.N. Group No.3		Paver		198.4	--	13.05		2589.12
60	Ganesh Mandir Marg	--		Asphalt	391.9	--	14.58		3958
61	Road from Group No. 5 to Santoshimata Nagar	--		Asphalt	147.5	--	10.1		1983
62	Kangutkar Chowk to Municipal Market	--		Asphalt	244.7	--	13.45		1688
63	Bindu Madhav Thakare Marg	C.C.			110.1	--	27.4		473
64	Ambedkar Hospital Road	--		Asphalt	117.7	--	15.3		1571
65	Ramakant Deshmukh Marg to Bldg. No. 24 Road	--		Asphalt	220	--	13.25		2200
66	Paresh Parkar Marg	--	Paver 100 Rmt.	Asphalt 100 Rmt.	200	--	10		1590
67	Ram Hazare Marg	--		Asphalt	164.3	--	12.2		739.35
68	P.Soman Marg	--		Asphalt	260	--	11.29		1529
69	Ahilyabai Holkar Marg 1	--		Asphalt	200	--	10.58		1150
70	Vitram Glass Road	--		Asphalt	160	--	10.05		1496
71	Lok Gaurav Marg	--		Asphalt	160	--	9.33		2120
72	Kanjur Marg Station Road	--		Asphalt	450	--	13.25		5760
73	Phirozshah Godrej Marg	--		Asphalt	200	--	12.8		1560
74	Padmawati Road	--		Asphalt	180	--	11		1746
75	Ashram Road	--		Asphalt	138	--	9.7		1422
76	Jain Mandir Noad	--		Asphalt	100	--	10.3		1100
77	Apna Bazar Road	--		Asphalt	257	--	11		3470
78	Prashant Apartment Road	--	Paver 200 Rmt.	Asphalt 680 Rmt	880	--	18.3		16104
79	Hanuman	--	Paver 80	Asphalt 70	150	--	9		840

	Road		Rmt	Rmt.					
80	Road Near Durgadevi Garden	--		Asphalt	365	--	10		4563
81	Chaitanya Nagar Road	--	Paver	Asphalt	110	--	12.5		880
82	Road from Ramabai Ambedkar Nagar to G.L. Company	--		Asphalt	76	--	11.5		380
83	Road from Flora Hsg.Soc. to main Road	--		Asphalt	120	--	10		1260
84	Nana Palshikar Marg	--	Paver		760	--	10.5		14440
85	Main Street	--		Asphalt	720	--	18.3		13176
86	High Street	--	Paver		1075	--	18.3		19673
87	Orchid Avenue Street	C.C.		Asphalt	1360	--	18.3		24880
88	Central Avenue Road	C.C.			385	--	18.3		7046
89	Technology Street	--		Asphalt	575	--	18.3		10523
90	Forest Street	--	Paver 585 Rmt.	Asphalt 100 Rmt.	685	--	18.3		12536
91	CLIFF Street	--		Asphalt	370	--	18.3		6771
92	Ridge Street	--	Paver 300 Rmt	Asphalt 800 Rmt.	1100	--	18.3		20130
93	Saki Vihar Road	--	Paver	-	500	--	11		2286
94	Jogeshwari Vikhroli Link Road	C.C. 4400 Rmt.		Asphalt 2400 Rmt.	6800	--	45.7		310760

MINOR ROADS in 'S' Ward

Sr. No.	Name of the Road	Category of the road			Length of the Road Mts.	Width of the Road Mts.			Area of road excluding Footpath in Sq.M.
		C.C.Road	Paver Block	Asphalt		Side strip (Asphalt/Paver Block)	Carriage Way	Foot path	
1	2	3	4	5	6	7	8	9	
1	Dargah Road	--	Paver 400 Rmt.	Asphalt 290 Rmt	690	--	6	4140	4140
2	Murum Khada Gully	--	Paver	-	360	--	6	--	2160

3	Ambewadi Road	--	Paver	-	100	--	8	--	600
4	Azad Nagar	--		Asphalt	150	--	4	--	1200
5	Prakash Nagar	--		Asphalt	395	--	6	--	2370
6	Zakeria Compound Road	--	Paver	-	50	--	6	--	300
7	Kismat Nagar Road	--		Asphalt	164	--	4	--	656
8	Khindi Pada Road	--	Paver 200 Rmt	Asphalt 290 Rmt	438	--	6	--	2628
9	Shree Ram Pada Road	--	Paver 474 Rmt.	Asphalt 290 Rmt	714	--	6	--	4284
10	Atmaram Bhoir Marg	--		Asphalt	180	--	4	--	720
11	Ahile Adis Marg	--	Paver	-	300	--	5	--	1500
12	Pooja Industrial Road	--		Asphalt	120	--	4	--	480
13	Shree Ram Nagar Road	--	Paver	-	180	--	4	--	720
14	Chappal Gulli	--	Paver	-	225	--	4	--	900
15	Goni Gulli	--	Paver	-	75	--	4	--	300
16	Dargah Cross Road	--	Paver	-	150	--	5	--	750
17	Guibi Nagar , Khindipada	--	Paver	-	160	--	5	--	800
18	Rajaram Seth Ovhal Marg	--		Asphalt	684	--	5	--	3420
19	Zahid Compound Road	--	Paver	-	90	--	5	--	450
20	Bharji Naik Road	--	Paver	-	190	--	4	--	760
21	Anthony Church Road	--	Paver	-	688	--	6	--	4128
22	Prem Nagar	--	Paver	-	365	--	4	--	1460
23	Jai Hind Compound	--		Asphalt	180	--	4	--	720
24	New Jerusalem Church	--		Asphalt	170	--	4	--	850
25	Madina Masjid	--	Paver	-	75	--	5	--	300
26	Patel Compound	--	Paver	-	350	--	4	--	1750
27	Govind Nagar	--		Asphalt	518	--	5	--	2590
28	Bhaidas Bhutta Marg	--	Paver	-	240	--	5	--	1440
29	Shiv Mandir Road	--	Paver	-	330	--	5	--	1650
30	Ambyachi Bharani	--		Asphalt	160	--	5	--	690
31	Nazama Nagar	C.C	Paver	-	930	--	4	--	3720
32	Sonapur Lane			Asphalt	170	--	6	--	1020
33	Punjabi Patra Chawl Road		Paver	-	140	--	6	--	840
34	Samuel Street			Asphalt	320	--	6	--	1920

35	Prem Nagar Road		Paver	Asphalt	260	--	5.5	--	1430
36	Shastri Nagar Road		Paver		680	--	6	--	4080
37	Rajiv Gandhi Nagar Road			Asphalt	180	--	6	--	1080
38	Nityanand Mandir Road		Paver		375	--	8	--	3000
39	Ekvira Devi Marg		Paver		300	--	5.5	--	1650
40	Rawate Compound Road		Paver		450	--	5.5	--	2475
41	Sant Nirankari Marg		Paver		300	--	5.5	--	1650
42	Anthony Church Road		Paver		1200	--	6.5	--	7800
43	Tembi Pada Road	--		Asphalt	1200	--	6.5	--	7800
44	Tembi Pada Cross Road	--		Asphalt	100	--	6.5	--	650
45	Gaodevi Road	--	Paver 500 Rmt.	Asphalt 290 Rmt	1250	--	6.5	--	8125
46	Tembi Pada School Road	--	Paver 50 Rmt.	Asphalt 290 Rmt	100	--	3.5	--	350
47	Enayat Nagar	--		Asphalt	180	--	6	--	1080
48	Sai Vihar Road	--	Paver		150	--	6	--	900
49	Sai Hill Road	--		Asphalt	103	--	6	--	618
50	Kranti Nagar Road	--		Asphalt	705	--	5	--	3525
51	Sanman Singh Road	--	Paver		350	--	8	--	2800
52	Pandav Kund Road	--	Paver		114	--	6	--	684
53	Mhatre Compound Road	--	Paver		90	--	5	--	450
54	Chandralkha Mitra Mandal Road	--		Asphalt	382	--	5	--	1910
55	Shiv Darshan Path	--		Asphalt	103	--	6	--	618
56	Panch mandir Road	--	Paver	-	390	--	6	--	2340
57	Nardas Nagar Road	--	Paver		114	--	6	--	684
58	Shiv Sharma Ind. Estate Road	--	Paver 40 Rmt.	Asphalt 40 Rmt.	80	--	4	--	320
59	Sarvodya Nagar Road No.2	--	Paver	-	176	--	8	--	1408
60	Draksha Baug Road / Rampyari Road	--	Paver	-	345	--	7	--	2415
61	Gaondevi Hill	--	Paver	-	160	--	5	--	800

	Road								
62	Bhattipada Cross Road	--	Paver 150 Rmt.	Asphalt 148 Rmt.	298	--	6	--	1788
63	Bhattipada Road	--	Paver		115	--	5	--	575
64	Sarvodya Nagar Road No.1	--	Paver		280	--	8	--	2240
65	Bharat Kumar Basina Marg	--	Paver		296	--	6	--	2E+05
66	M.V.R. Shinde Road	--		Asphalt	295	--	8	--	1776
67	Kaju Tekdi Road	--	Paver		120	--	4.5	--	10200
68	Sardarni Rampyari Road	--	Paver		125	--	7	--	875
69	Parag School Road	--	Paver		130	--	7	--	910
70	Road leading to P.G. plot behind Arunodaya Tower	--	Paver		240	--	7	--	1680
71	Pratap Nagar Road	--		Asphalt	675	--	8	--	5400
72	Hanuman Nagar Road	--		Asphalt	330	--	8	--	2640
73	Kokan Nagar Road	--		Asphalt	1021	--	8	--	8168
74	Utkarsha Nagar Road	--	Paver		800	--	6	--	4800
75	Ramabai Nagar Road	--		Asphalt	197	--	6	--	1182
76	Jamil Nagar Road	--	Paver		325	--	5	--	1625
77	Samarth Nagar Road	--	Paver		200	--	6	--	1200
78	Sahyadri Nagar Road	--	Paver		200	--	4	--	800
79	Reservoir Road	--	Paver		80	--	6	--	480
80	Kokan Nagar Cross Road	--	Paver		125	--	4	--	500
81	Kombadi Gully Road	--	Paver		210	--	4	--	840
82	Ashok Nagar Road	--	Paver	-	444	--	5.5	--	2442
83	Datar Colony Internal Road	--		Asphalt	165	--	6.5	--	10725
84	Damle Colony	--		Asphalt	220	--	6.4	--	1408
85	Hanuman Gully	--	Paver	-	289	--	5	--	1445
86	Sai Nagar	--	Paver		229	--	6	--	1374
87	Baburao Paranjape	--		Asphalt	46	--	6.4	--	294.4

	Road								
88	Indian Education Road	--		Asphalt	68	--	3.6	--	244.8
89	Babi Dhuri Marg	--		Asphalt	102	--	6.6	--	670.6
90	Sneha Vardhini Road	--		Asphalt	39.4	--	6.4	--	252.2
91	Sai Raj Apartment Road	--		Asphalt	183	--	4.6	--	841.8
92	Wadegati Marg	--	Paver	-	170	--	5	--	850
93	Shiv Mandir Path	--	Paver	-	170	--	6	--	1020
94	Maharashtra Nagar Road	--	Paver		141	--	8	--	1128
95	Jokim Compound Road	--	Paver		210	--	5.3	--	1113
96	Jain Mandir Road	C.C.			460	--	3.6	--	1656
97	Nehru Nagar Road	--		Asphalt	1500	--	5.3	--	7950
98	Opp. Jain Mandir Road	--		Asphalt	202	--	3.6	--	727.2
99	Road Opp. Church From Jasmin Store to Indira Nagar	--	Paver	-	342	--	6.4	--	2189
100	Annabhau Godbole Marg	--	Paver 250 Rmt.	Asphalt 350 Rmt.	600	--	5.75	--	3450
101	Phule Nagar Road	--	Paver 200 Rmt.	Asphalt 285 Rmt.	485	--	6.5	--	3153
102	Road from Bldg. No. 155 to 41	--		Asphalt	220	--	7.5	--	1650
103	Road near Garden No. 14	--		Asphalt	53	--	6.5	--	3445
104	Road from Bldg. No. 48 to 46	--		Asphalt	260	--	6.5	--	1690
105	Road from Plot 40 to Ganesh Mandir	--		Asphalt	90	--	6.5	--	585
106	Road from Bldg. No. 139 to 81	--		Asphalt	60	--	6.5	--	390
107	Road from Bldg. No. 218 to 220	--		Asphalt	1455	--	6.2	--	9021
108	Road from Bldg. No. 1 to 63	--		Asphalt	1112	--	8	--	8896
109	Road from Bldg. No. 75 to 85	--		Asphalt	167	--	8	--	1336
110	Road from	--		Asphalt	127	--	6.5	--	825.5

	Bldg. No. 134 to 131								
111	Road from Bldg. No. 119 to 114	--		Asphalt	126	--	8.5	--	1071
112	Road from Bldg. No. 103 to 102	--		Asphalt	180	--	8.5	--	1530
113	Road from Cement go-down to	--		Asphalt	428	--	6.5	--	278.2
114	Road from Bldg. No. 83 to 254	--		Asphalt	120	--	7.2	--	864
115	Road from Bldg. No. 174 to 232	--		Asphalt	147	--	8.8	--	1294
116	Road from Bldg. No. 202 to 119	--		Asphalt	49	--	7.5	--	367.5
117	Road from Bldg. No. 236 to 238	--		Asphalt	53	--	8.4	--	445.2
118	Road from Bldg. No. 218 to 219	--		Asphalt	53	--	6.5	--	345
119	Road from Bldg. No. 224 to 223	--		Asphalt	80	--	6.5	--	520
120	Road from Main bus route to Circle	--		Asphalt	242	--	6.5	--	1573
121	Road from Bldg. No. 219 to 225	--		Asphalt	640	--	8.5	--	15440
122	Road from Bldg. No. 58 to 145	--		Asphalt	93	--	6.5	--	604.5
123	Road from Bldg. No. 147 to 222	--		Asphalt	80	--	7.5	--	600
124	Road from Bldg. No. 150 to 226	--		Asphalt	80	--	7.5	--	600
125	Ashok Nagar Road	--		Asphalt	286	--	6.87	--	1965
126	Road from Balwadi to Ambedkar Hospital	--		Asphalt	242.7	--	7.85	--	1905
127	Guru Govind Singh Garden (South)	--	Paver		267.9	--	7.45	--	1996
128	Guru Govind Singh Garden	--	Paver		261.4	--	8.57	--	2240

	(North)								
129	Internal Road Ambedkar Hospital back side			Asphalt	495	--	7.88	--	3901
130	Modi Hospital Road			Asphalt	155.3	--	7.3	--	1134
131	Vijay Munge- kar Marg		Paver		167.9	--	6.25	--	1049
132	Gaikwad Udyan (North)		Paver		165.8	--	8.75	--	1451
133	Gujrathi Chawl Road			Asphalt	126.7	--	5.5	--	696
134	Chawl No. 320 to 315			Asphalt	123.5	--	5.5	--	629
135	Saraswati Garage to Navjivan nalla				100	--	5.1	--	520
136	Maya Sagar Road				155.9	--	5.2	--	681
137	Ashatvinayak Path			Asphalt	143.9	--	4.37	--	831
138	Buddha Man- dir Road			Asphalt	88.1	--	5.78	--	599
139	Lalsingh Chauhan Road			Asphalt	102.1	--	6.8	--	790
140	Zendewala Baba Road		Paver		230	--	7.7	--	1380
141	Chawl No. 363 to 371			Asphalt	165	--	6	--	945
142	Chawl No. 372 to Fransis Compound	--		Asphalt	74.4	--	5.73	--	468
143	Masjid Group T.N. Group No.4	--		Asphalt	134	--	6.3	--	1701
144	Santoshi Mata Mandir	--		Asphalt	106.3	--	12.7	--	579
145	Chandika Mata Path	--		Asphalt	590	--	5.45	--	8602
146	Vishwas Stores to Farah Fashion	--		Asphalt	244.7	--	6.9	--	1284
147	Marks Tamil Church Road	--		Asphalt	86.9	--	5.25	--	443
148	Road from Chawl to 255 to MHADA plot	--		Asphalt	89.5	--	5.1	--	384
149	Road from Chawl No. 295 to 291	--		Asphalt	1310	--	4.3	--	35894
150	Santoshimata Nagar to Vikhroli Vidya-	C.C.			213.6	--	4.3	--	1104

	laya Chawl internal								
151	Road from Shivsena Shakha to Karve Nagar	--		Asphalt	330	--	5.17	--	5049
152	T.K. Kamble Marg	--	Paver 100 Rmt.	Asphalt 180 Rmt.	280	--	7.95	--	3416
153	Ganesh Path	--		Asphalt	490	--	4.5	--	2695
154	Namdev Patne Marg	--	Paver	-	110	--	5.5	--	583
155	Sambhavanath Jain Mandir Marg	--		Asphalt	390	--	5.3	--	4403
156	Old Court Lane	--	Paver		260	--	5.88	--	2751
157	Ahilyabai Hol- kar Marg 2	C.C.			600	--	5.75	--	4380
158	Chandan Na- gar Road	--		Asphalt	70	--	7.3	--	266
159	Ambewadi Road	--		Asphalt	120	--	3.8	--	1206
160	Shree Jain Upashrya Marg	--		Asphalt	343	--	7.8	--	3773
161	Garib Nagar Road	--		Asphalt	165	--	5.6	--	1650
162	Road from Lo- tus Glass to Gokhale Nagar	--	Paver 100 Rmt.	Asphalt	297	--	8	--	3416
163	Road from P.No. S4F1/027 to Ganesh Hous- ing Society	--		Asphalt	695	--	5	--	5908
164	Tirandaz Vil- lage Road	--		Asphalt	310	--	8.5	--	3100
165	Filter Pada Road	--		Asphalt	600	--	6.55	--	2700
166	Dargah Road	--	Paver600 Rmt.	Asphalt600 Rmt.	1200	--	4.5	--	7200
167	Sai Bangoda Village Road	--		Asphalt	1200	--	6	--	7317
168	Mahatma Phule Road	--	Paver 300 Rmt.	Asphalt 1700 Rmt.	2000	--	6.09	--	22000
169	Kailash Nagar Road	--	--	Asphalt	200	--	4.57	--	915
170	Pawar Wadi Road	--	Paver		148.4	--	4.57	--	678.2

LIST OF MAJOR NALLA IN 'S' WARD

A) Catchment Area No.304

1. Darga Road junction with M.G.Link Road
2. Hoechest Nalla
3. Krishna Woolen Mill Nalla
4. Punjabi Patra Chawl Nalla
5. Neerabai Chawl Nalla
6. Usha Nagar Nalla
7. Gaondevi Nalla
8. Gaondevi Nalla along Gaondevi Road
9. Bhattipada Nalla, Opp. Jain Mandir
10. Shastri Nagar Nalla (Lake Road Nalla)
11. Ministeel Nalla I
12. Ministeel Nalla II
13. API Nalla at Dhiraj Complex

B) Catchment Area No.305

1. Pandav Kund Nalla at Kranti Nagar
2. Pandav Kund Nalla at Sai Vihar
3. Pandav Kund Nalla at Utkarsha Nagar
4. Tembhipada Nalla at Panch Mandir
5. Tembhipada Nalla at Khirade Compound
6. Tembhipada Nalla at Gadhav Naka
7. Tembhipada Nalla at Kokan Nagar Road
8. Tembhipada Nalla at Sahyadri Nagar
9. Tembhipada Nalla at Budha Nagar
10. Tembhipada Nalla at Maharashtra Nagar
11. Tembhipada Nalla at Bombay Oil Mill
12. Tembhipada Nalla behind D.A.V. College
13. Tembhipada Nalla near Bhandup Station
14. Tembhipada Nalla at Menon College
15. Sai Nalla at Sai Nagar Culvert
16. Sai Nalla at Trolley Line
17. Trolley Line in Creek upto Usha Nagar Nalla

18. Bombay Oil Mill Nalla

C) Catchment Area No.306, Crompton Nalla

1. Hanuman Nagar Nalla near Bakery
2. Hanuman Nagar Nalla near Kausabai Chawl
3. Hanuman Nagar Nalla near Naval Docktyard
4. Hanuman Nagar Nalla from L.B.S. to Railway Track
5. Hanuman Nagar Nalla from Railwaty Track to Kanjur Village
6. Hanuman Nagar Nalla behind Police Chowky
7. Kannamwar Nagar Nalla near Ambedkar Hospital
8. Kannamwar Nagar Nalla near Post Office
9. Kannamwar Nagar Nalla near Hajare Marg
10. Vikhroli Nalla I
11. Vikhroli Nalla II, Hariyali Nalla
12. Santoshi Mata Nalla at Shivaji Nagar
13. Jolly Board Nalla near 60 ft. D.P.Road
14. Kanjur Marg Nalla near L.V.L. Road
15. Nutan Nagar Nalla near Highway

D) Catchment Area No.307, Kannamwar Nagar Nalla

16. Bharat Nagar Nalla
17. Bharat Nagar Nalla Near Eastern Express Highway
18. Kannamwar Nagar Nalla near Culvert
19. Kannamwar Nagar Nalla at Panther Nagar

LIST OF MINOR NALLAS

A) <u>OPEN MINOR NALLAS</u>	<u>Length in mt.</u>
1 GAVDEVI NALLA	705.00
2 JOKIM COMPOUND	200.00
3 L.B.S. TO SURYA COMPLEX	450.00
4 M.G. LINK ROAD	1000.00
5 MURUM KHADA ROAD	110.00
6 NATIONAL CO. NALLA	155.00
7 QUARRY ROAD	75.00
8 RAJARAM WADI NALLA	335.00
9 S.D. PHADKE MARG.- SOUTH SIDE OF ROAD	150.00
10 TEMBI PADA NALLA	105.00
11 OPP. VINA INDUSTRIAL ESTATE, L.B.S.MARG	80.00
12 TAGORE NAGAR NALLA	1300.00
13 TIRANDAZ VILLAGE NALLA	55.00
14 PIROJSHAH GODREJ NALLA	510.00
15 TAGORE NAGER BLDG. 410	10.00
16 VITRUM GLASS NALLA	280.00
17 POOJA APARTMENT NALLA	190.00
18 SURYA NAGAR, KRANTI MAIDAN	54.00
19 SAI SUMAN SOC. NEAR VIKHROLI BUS DEPOT	270.00
20 ANY OTHER NALLA IN 'S' WARD	320.00
21 BUDDHA NAGAR NALLA	110.00
22 GAVDEVI 1ST STEP	130.00
23 GORKHA CHAWL	395.00
24 INAMDAR COMPOUND	491.00
25 INDIRA NAGAR TO CROMPTON	104.00
26 INDIRA NAGAR TO KANJUR VILLAGE ROAD	210.00
27 KASHI NAGAR	300.00
28 KHANDAGALE COMPOUND	85.00
29 KHINDI PADA NALLA	240.00
30 KHIRADE COMPOUND	105.00
31 KRANTI NAGAR	305.00
32 MOHTADEVI	250.00
33 PADWAL COMPOUND	675.00
34 PANSARE COMPOUND NALLA	455.00
35 PATIL ESTATE	80.00
36 PATKAR COMPOUND NALLA	670.00
37 UTKARSH NAGAR	125.00
38 VAIBHAV CHOWK NALLA	150.00
39 BUDDHA NAGAR NALLA	150.00

40	CHANDAN NAGAR NALLA	300.00
41	D.G.Q.A. NALLA	235.00
42	FITWELL CO. NALLA	283.00
43	JAL VAYU VIHAR NALLA	168.00
44	LAXMI UDYOG NALLA	446.00
45	LOK GAURAV NALLA	80.00
46	MASJID NALLA	323.00
47	N.T.P.C. NALLA	195.00
48	NAVJIVAN NALLA	413.00
49	SANTOSHI MATA NALLA	412.00
50	SARMALKAR CHAWL NALLA	40.00
51	PAWAR WADI NEAR GANESH MANDIR	200.00
52	ANJUMAN HIGH SCHOOL TOWARDS BUDDHA VIHAR	225.00
53	AMBE WADI , NEAR SAMBHAJI VIDYALAYA	225.00

CLOSED DRAINS - BOX & PIPE DRAINS

NAME	Length in mt.
1 ADVANI OERLIKON, L.B.S. MARG.	30.00
2 AMBYACHI BHARNI	170.00
3 ASIAN PAINT CULVERT	30.00
4 BOX DRAIN ALONG LAKE ROAD	500.00
5 CIBA GEIGY CULVERT	30.00
6 G.K.W. RESIDENTIAL COLONY CULVERT (2 NOS. COMBINED)	60.00
7 GAVDEVI 2ND STEP	135.00
8 HUNUMAN NAGAR BOX DRAIN	300.00
9 KABRASTAN ROAD TO BHANDUP COMPLEX	230.00
10 KANJUR STATION TO MANSUKH DYEING	240.00
11 L.B.S. - I.A.A.C. TO SOHAIL ENGG.	450.00
12 L.B.S. KANJUR STATION TO ADAK COMPOUND	775.00
13 L.B.S.MARG	3800.00
14 MANGATRAM PETROL PUMP CULVERT	30.00
15 NOVA COMPANY CULVERT, L.B.S. MARG.	30.00
16 NRYATANJALI MARG N.E.S.	120.00
17 QURESHI NAGAR	350.00
18 R.R. PAINTS TO KAKA PETROL PUMP	340.00
19 SAMARTH NAGAR / SHIVNERI COMPOUND	155.00
20 SHANGRILA BISCUIT L.B.S. MARG	30.00
21 SHASTRI NAGAR NALLA	135.00
22 SOHAIL ENGG. CULVERT, L.B.S. MARG.	30.00
23 ST. XAVIERS SCHOOL CULVERT	30.00
24 A.S.MARG. 14 NOS. CULVERT	550.00
25 BOX DRAIN AT GANDHI NAGAR JUNCTION	40.00

26	BOX DRAIN AT KANNAMWAR NAGAR BLDG. NO. 189	240.00
27	BOX DRAIN AT MARWADI NALLA	30.00
28	BOX DRAIN AT MORARJI NAGAR	40.00
29	BOX DRAIN AT PRASHANT APARTMENT NALLA, POWAI	395.00
30	BOX DRAIN AT RAMWADI	120.00
31	KANNAMWAR NAGAR PARALLEL TO HIGHWAY	1400.00
32	L.B.S.- A.S. MARG. TO CULVERT	30.00
33	L.B.S. CULVERT , S/SOUTH	260.00
34	MORARJEE NAGAR NALLA	50.00
35	PIPE DRAIN AT CINEVISTA COMPANY, KANJURMARG	45.00
36	PIPE DRAIN AT LAXMI UDYOG NAGAR, KANJUR	137.00
37	VIKHROLI STATION ROAD	60.00
38	MONEX COMPANY, NEAR RAJ LEGACY BLDG.	225.00
39	CULVERTS AT KANNAMWAR NAGAR – 4 NOS.	80.00
40	CULVERTS AT TAGORE NAGAR – 4 NOS.	80.00
41	ROAD NO 17 VIKHROLI(W)	200.00
42	NALL FROM BUDDHA VIHAR TO NAVJEEVAN MAJOR NALL VIKHROLI(E)	150.00
43	MAHATMA PHULE NAGAR POWAI	250.00
44	BHANDUP VILLAGE / BRIGHT HIGH SCHOOL	135.00
45	QUARRY ROAD	75.00
46	RAJARAM WADI/ JAY BHARAT TO BARKAT CHAWL	405.00
47	DATTA MANDIR MARG FROM VILLAGE ROAD TO RADHA KRISHNA MANDIR	400.00
48	DRAKSHA BAUG ROAD NALLA	155.00
49	NAHUR STN. EAST ANMOL SOCIETY TO CREEK	85.00
50	JOGESHWARI VIKHROLI LINK ROAD	
51	GAVDEVI ROAD 1ST STEP TO TABELA	60.00
52	SHRIRAM PADA TO SHIV MANDIR	120.00
53	RAMNAGAR	305.00
54	ASHOK NAGAR NALLA	300.00
55	KALIMATA MANDIR TO KOKAN NAGAR NALLA	185.00
56	RAWTE COMPOUND	130.00
57	WAGHOBWA WADI	295.00
58	NUTAN NAGAR NALLA	255.00
59	CARK PARKING NALLA	178.00
60	RAMWADI	200.00
61	SANTOSHI MATA NAGAR PIPE DRAIN	300.00
62	MARWADI NALLA	232.00
63	AMBE WADI NALLA	90.00
64	INDIRA NAGAR NALLA	120.00

LIST OF RAILWAY CULVERTS

FROM VIKHROLI RAILWAY STATION

TO

NAHUR RAILWAY STATION

1. P. Godrej Culvert - Vikhroli Rly Station
2. Ramwai Nallah Rly. Culvert - Vikhroli Rly Station
3. Marwadi Nallah Rly Culvert - near Vikhroli Rly
4. Masjid Nallah Rly Culvert
5. Navjeevan Nagar Rly Culvert
6. Santoshi Mata Rly. Culvert
7. Over Cipla Co. Rly. Culvert
8. Laxmi Udyog Nallah Rly Culvert - Kanjur Rly Stn.
9. Great Esrow Garden Rly. Culvert - Kanjur Rly Stn.
10. Behind D.A.V. College Rly. Culvert - Kanjur Rly Stn.
11. Platform No. 1, Rly Culvert, Bhandup Rly Station
12. Menon College, Rly Culvert, Bhandup Rly Station
13. A.P.I.Co Rly, Culvert, Bhandup Rly Station
14. Usha Nagar Rly Culvert, Bhandup Rly Station
15. Nahur Rly Station Culvert

DURING EMERGENCY PERSON TO BE CONTACTED IN 'S' WARD

Sr.	Type of Emergency	Person to be contacted	Designation of Contacted person	Cell No. /Phone No.
1	All type of emergency	_S' Ward Disaster control room attendant	J.E. /S.E.	022-25954000
2	All type of emergency	Smt. C.R. Jadhav	Asst.Com. 'S' Ward	9167203780
3	Building Collapse	Shri. Balaji Ghodke Shri. Wagh Shri. Madhukar Shelar	A.E. (B&F) _S' Ward A.E. (B&F) _S' Ward A.E. (B&F) _S' Ward	7385066951 9869472112 9819039876
4	Flooding	Shri. D.S. Ahire Shri. R.H.Pagar	A.E. (Maint) _S' Ward	9820371828 9820672183
5	Tree Collapse	Shri. Ankush Vaze	Jr. Tree Officer	8424003318
		Shri. Lambe	H.A.S.	9673716235
		Smt. Suryavanshi	H.A.S.	9594323624
6	Fire	Shri. Balaji Ghodke Shri. Wagh Shri. Madhukar Shelar	A.E. (B&F) _S' Ward A.E. (B&F) _S' Ward A.E. (B&F) _S' Ward	7385066951 9869472112 9819039876
		Shri. D.S. Ahire Shri. R.H.Pagar	A.E. (Maint) _S' Ward	9820371828 9820672183
7	Earthquake	Shri. Balaji Ghodke Shri. Wagh Shri. Madhukar Shelar	A.E. (B&F) _S' Ward A.E. (B&F) _S' Ward A.E. (B&F) _S' Ward	7385066951 9869472112 9819039876
8	Land slide	Shri. Balaji Ghodke Shri. Wagh Shri. Madhukar Shelar	A.E. (B&F) _S' Ward A.E. (B&F) _S' Ward A.E. (B&F) _S' Ward	7385066951 9869472112 9819039876
9	Missing of Manhole cover	Shri. D.S. Ahire Shri. R.H.Pagar	A.E. (Maint) _S' Ward	9820371828 9820672183
10	Traffic emergency	Shri. D.S. Ahire Shri. R.H.Pagar	A.E. (Maint) _S' Ward	9820371828 9820672183
11	Temporary shifting	Smt. Malti Tonpe	A.O. (School)	8879211960
12	Utility Emergency	Shri. D.S. Ahire Shri. R.H.Pagar	A.E. (Maint) _S' Ward	9820371828 9820672183
13	Epidemic	Shri. Jadhav	M.O.H. _S' Ward	9920759834
14	Leakage of water main	Shri. S.S. Shinde	A.E. (WW) _S' Ward	9930260438
15	Foul smell due to dead animal	Shri. Gavali	A.E. (SWM) _S' Ward	9867029329
16	Lifting of garbage	Shri. Gavali	A.E. (SWM) _S' Ward	9867029329
17	Emergency in Electrification work	Shri. Khopkar	S.E. (Electrical)	9867855482

18	Blockage /damage of sewer line	Shri. D.S. Ahire Shri. R.H.Pagar	A.E. (Maint) _S' Ward	9820371828 9820672183
19	Snake Catcher	Shri. Nadkarni	N.G.O.	9870187870
20	Major Nalla Desilting	Shri. Londhe Shri. Tuplondhe	S.E. (SWD)	8976479635 9833820161
21	Minor Nalla desilting	Shri. D.S. Ahire Shri. R.H.Pagar	A.E. (Maint) _S' Ward	9820371828 9820672183

LIST OF GARDENS RG /PG IN 'S' WARD

Open Gardens / Play Grounds / Recreation Grounds / Parks / Open Spaces: 51

1. Garden, Behind Lake Castle, Hiranandani Layout, Powai, Mumbai-76.
2. Garden, Plot Hiranandani Complex, Powai.
3. Garden, Village Powai, Hiranandani Complex, Powai.
4. Priyadarshini Udyan, Plot No.12, along with E.E. Highway, Kannamwar Nagar, Vikhroli (E), Mumbai – 400 083.
5. Karmaveer Dadasaheb Gaikwad Udyan, Plot no.3, Tagore nagar, Vikhroli (E), Mumbai – 400083.
6. Garden, Plot no.5, Opp. Bldg. no.61/62, Kannamwar nagar, Vikhroli (E), Mumbai -400083.
7. Guru Govind Sigh Udyan, Plot no.6, Tagore nagar, Vikhroli (E), Mumbai – 83.
8. Madhuban Garden, Near Shri Krishna Talkies, L.B.S. Road, Bhandup (W), Mumbai – 78.
9. Ravindranath Tagore Udyan, Plot no.1, Tagore Nagar, Vikhroli (E), Mumbai – 83.
10. Garden, Park Site, Vikhroli (E), Mumbai – 83.
11. Sahakar Maharshi Baburao Paranjape Udyan, Datar Colony, Bhandup (E), Mumbai – 78.
12. Krantiveer Udyan, Plot no.3, Opp. Bldg.no.108, Kannamwar nagar, Vikhroli (E), Mumbai – 83.
13. Durgadevi Sharma Udyan, Tirandaz Village, IIT Powai, Mumbai – 72.
14. Veermata Jijau Udyan, Plot no.16, Kannamwar Nagar, Vikhroli (E), Mumbai – 83.
15. Mahatma Jyotiba Phule Udyan, Plot no.8, Tagore nagar, Vikhroli (E), Mumbai – 83.
16. Matoshri Ramabai Thakare Plot no.14, Kannamwar nagar, Vikhroli (E), Mumbai – 83.
17. Garden, opp. Bldg.no.409, Tagore Nagar, Vikhroli (E), Mumbai – 83.
18. Rajashri Shahu Maharaj Kridangan, Plot near Sant Kabir High School, Tagore Nagar, Vikhroli (E), Mumbai – 83.
19. Dharmaveer Sambhaji Maidan, Plot no.10, Kannamwar nagar, Vikhroli (E), Mumbai-83.
20. Smt. Godavari Dhondiram Patil P.G. Mulund-Goregaon Link Road, Bhandup (W), Mumbai-78.
21. Dr. Babasaheb Ambedkar Kridangan, Plot no.7, Near Janta Vidyalaya, Vikhroli (E), Mumbai-83.
22. P.G. Plot, Park Side, Vikhroli (W).
23. Adishakti Shree Ekveeramata, Kridangan, Near Kamal Sagar Society, Bhandup (E).
24. Playground, Tank Road, B.M.C. School, Bhandup (W), Mumbai – 78.
25. Hutatma Raindra Mhatre Maidan, Plot no.6, Near Vikas High School, Kannamwar Nagar, Vikhroli (E).
26. Balgandharva Balodyan Plot no.11, Near Anandvan Co-Op. Hsg. Soc. Ltd., Kannamwar Nagar, Vikhroli (E).
27. Shri Ganesh Maidan Kannamwar Nagar, Bus Depot, Vikhroli (E), Mumbai – 83.
28. Dr. R.D. Bhandre Kridangan plot no.2,Kannamwar Nagar, Vikhroli (E).
29. Playground, Plot no.4/C, Opp. Bldg. no.72, Kannamwar nagar, Vikhroli.
30. Playground, Near Sai Ashish Complex, Village Road, Bhandup (W).
31. Playground, Behind Arunodaya Tower Konkan nagar, Bhandup (W).

32. Mahapaur Maidan, Near Ankur Hospital, Kanjurmarg (E).
33. Playground, Near Sahyadri School (Low level plot) Behind Arunodaya Tower, Bhandup (W), Mumbai-78.
34. Playground Village, Powai.
35. Playground Village Hariyali (E).
36. Prabodhankar Thakare Udyan Varsha Nagar, Park Side, Vikhroli (W), Mumbai-83.
37. Yashwantrao Chavan Recre, Ground Near Parivar Society, Kanjurmarg (E).
38. Recreation Ground Near Sharad Industrial Estate, Bhandup (W), Mumbai-78.
39. Sahid Jaywant Hanumant Patil R.G. opp. St. 'X'veier Highschool, LBS Road, Kanjur (E).
40. Recreation Ground Village Bhandup at Goregaon-Mulund Link Road, Bhandup, Mumbai-78.
41. Bajiprabhu Deshpande Recreation ground Nr. Akruiti Corporate Park, LBS Marg, Kanjur (W).
42. Recreation Ground Near Dreams Mall, Village Kanjur, Mumbai-78.
43. Recreation Ground, Anjani Kumar, Nahur (W), Mumbai-78.
44. Recreation Ground Near Kukreja Complex, Village Bhandup, Bhandup (W).
45. Recreation Ground, Near Shree Sai Usha Complex, Village Road, Bhandup (W).
46. Recreation Ground, Beside Gundecha Altura, LBS Road, Kanjur (E).
47. Recreation Ground, GKW Company, LBS Marg, Bhandup (W).
48. Open Space Developed as Garden at Adishankaracharya Marg, Powai.
49. Open Space Developed as P.G. at Hiranandani Complex, Powai.
50. Open Space, Powai.
51. CTS No.27/D (Part), Village Paspoli, Near Mithi River.

List of Tabela's in 'S' Ward

1. Ramdhani Tabela, Shivsadan Mitra Mandal chawl, Hanuman Nagar, Pratap Nagar road, Bhandup (W), Mumbai- 400 078
2. Yadav Tabela, Pansare Compound, Hanuman Nagar, Pratap nagar road, Bhandup (W) Mumbai – 400 078
3. Yadav Chawl, Pansare Compound, Hanuman Nagar, Pratap nagar road, Bhandup (W) Mumbai – 400 078
4. Mishrilal Yadav Chawl, Pansare Compound, Hanuman Nagar, Pratap nagar road, Bhandup (W) Mumbai – 400 078
5. Kanta Yadav , Pansare Compound, Hanuman Nagar, Pratap nagar road, Bhandup (W) Mumbai – 400 078
6. Pathan Chawl Tabela, Pratapnagar road, Bhandup (W), Mumbai – 400 078
7. Tabela behind Shivsena Shakha, Sai Vihar, Tembipada Road, Bhandup(W)
8. Tabela at Rajaram Compound, Utkarsh Nagar, Bhandup (W), Mumbai – 400 078
9. Tabela at Rajaram Compound, Utkarsh Nagar, Bhandup (W), Mumbai – 400 078
10. Tabela at Rajaram Compound, Utkarsh Nagar, Bhandup (W), Mumbai – 400 078
11. Tabela at Rajaram Compound, Utkarsh Nagar, Bhandup (W), Mumbai – 400 078
12. Dhanwant Singh Plot, Dattamandir Road, Bhandup (W), Mumbai – 400 078
13. Shobha Gupta Chawl, Water Tank road, Munshi Mahal, Jamil Nagar, Bhandup (W), Mumbai – 400 078
14. Morya Niwas, Munshi Mahal, Water Tank road, Bhandup (W), Mumbai – 400 078
15. Hariyali Gaon, Group no. 3, Behind Buddha Mandir, Vikhroli (E), Mumbai – 400 083
16. Tabela at Khindipada Road, Bhandup (W), Mumbai – 400 078
17. Tabela at Phule Nagar, Aare Road, Filterpada, Powai – 400 076
18. Tabela at Sakivihar Road, Near Pipe line, Powai – 400 076
19. Tabela near Niti, Darga Road, Passpoli gaon, Powai – 400 076
20. Tabela at Chittaraman Sharma Estate, Behind Ayyappa Temple, IIT, Powai – 400 076
21. Moraraji Nagar, Chaitanya Nagar, Powai – 400 076

बृहन्मुंबई महानगरपालिका
गणपती विसर्जन 'एस' विभाग - 2016

दिनांक	गणेश घाट (पवई)			पवारवाडी (पवई)			शिवाजी तलाव, भांडूप (प.)			भांडुपेश्वर कुंड, भांडूप (पुर्व)		
	घरगुती गणपती	सार्वजनिक गणपती	गौरी	घरगुती गणपती	सार्वजनिक गणपती	गौरी	घरगुती गणपती	सार्वजनिक गणपती	गौरी	घरगुती गणपती	सार्वजनिक गणपती	गौरी
06.09.2016	2616	6	0	931	0	0	1062	3	0	1688	3	0
09.09.2016	1274	92	0	483	20	0	456	6	0	759	19	0
10.09.2016	1423	23	132	872	16	110	1204	9	111	1710	15	186
11.09.2016	942	151	0	308	28	6	335	9	12	465	49	4
15.09.2016	1587	428	41	1045	202	35	1275	105	0	1096	189	15
एकुण	7842	700	173	3639	266	151	4332	132	123	5718	275	205
	एकुण		8715	एकुण		4056	एकुण		4587	एकुण		6198