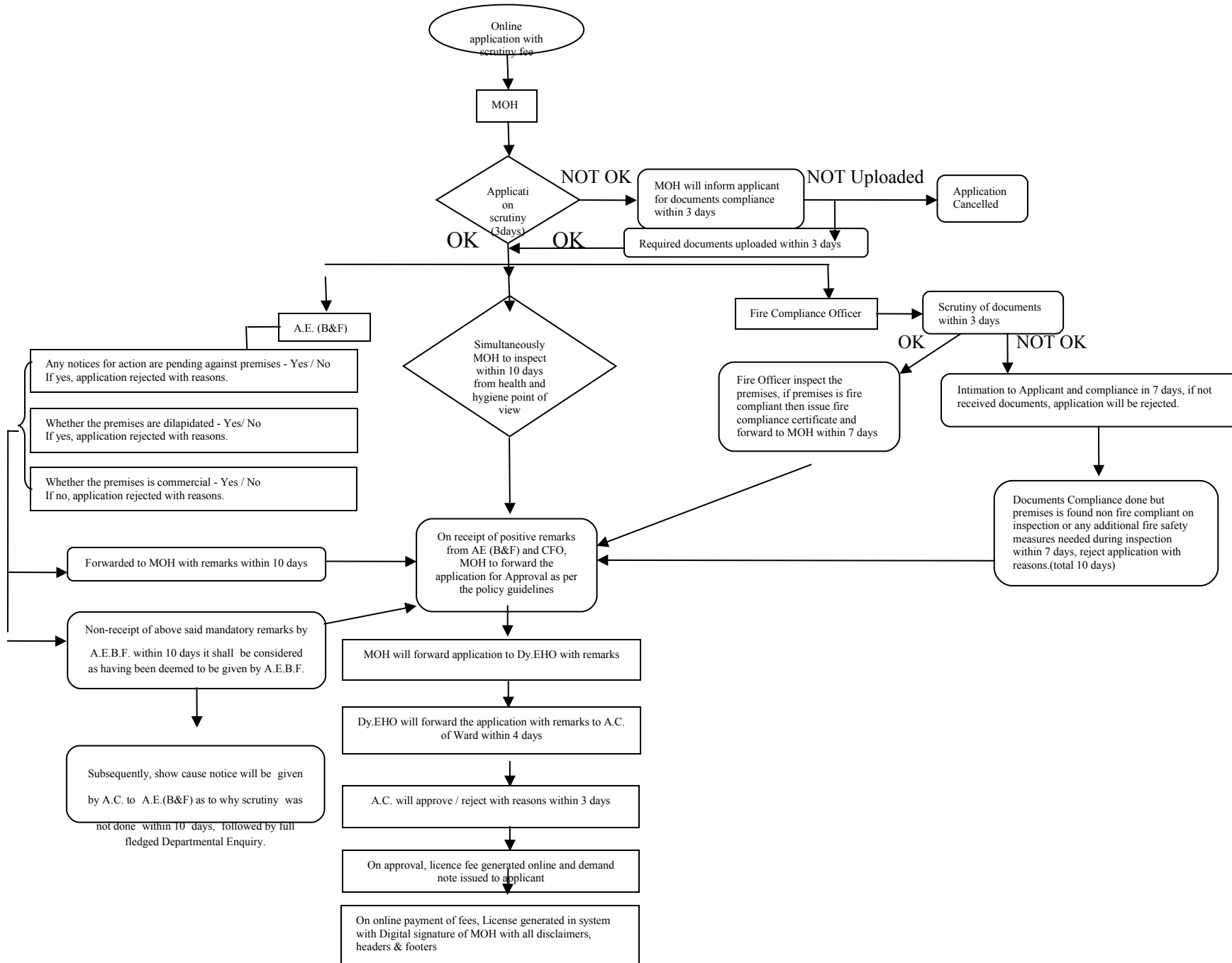
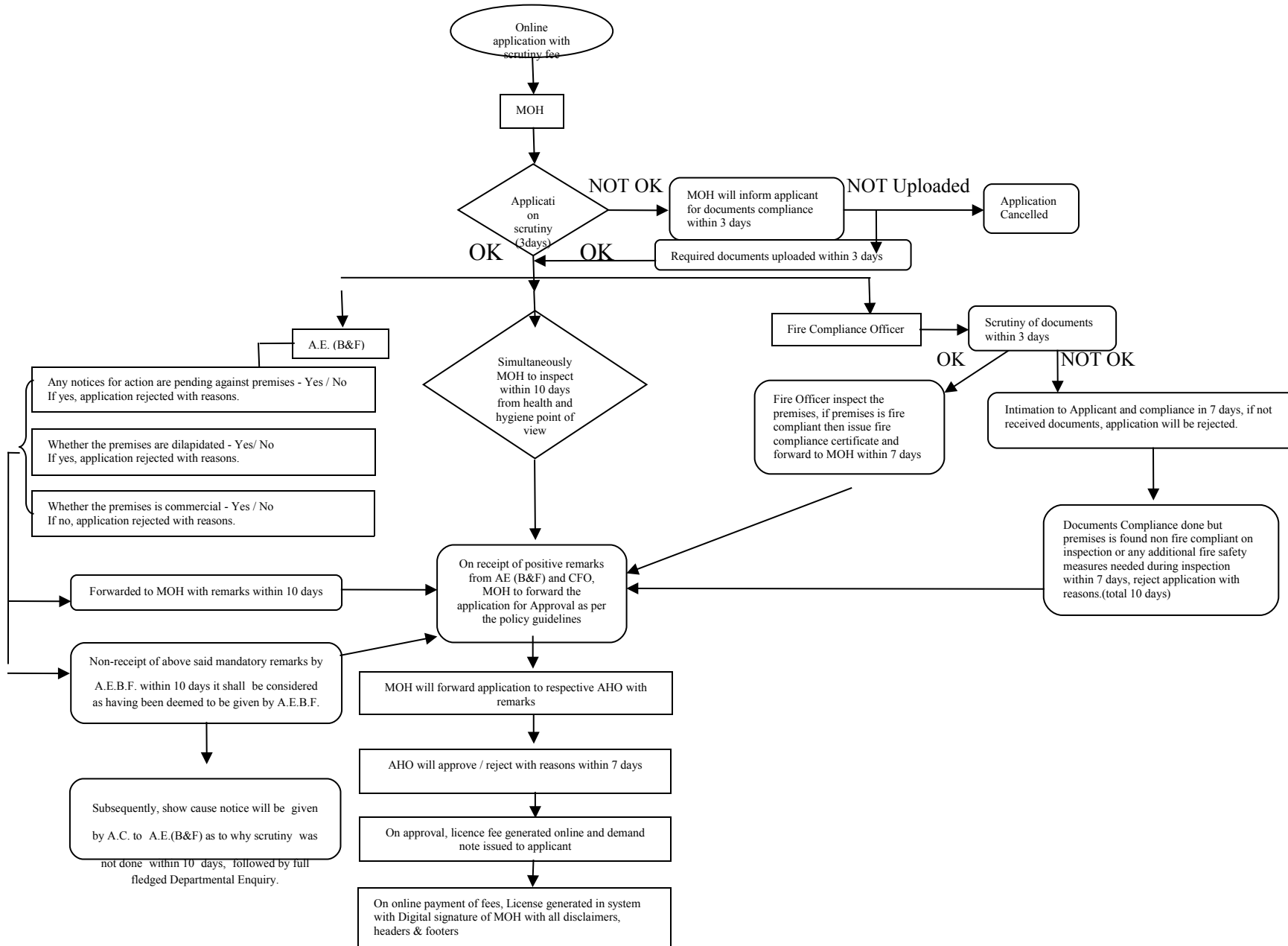


Process Chart for Revised Procedure for issue of New 'Eating House' Health License with Timelines



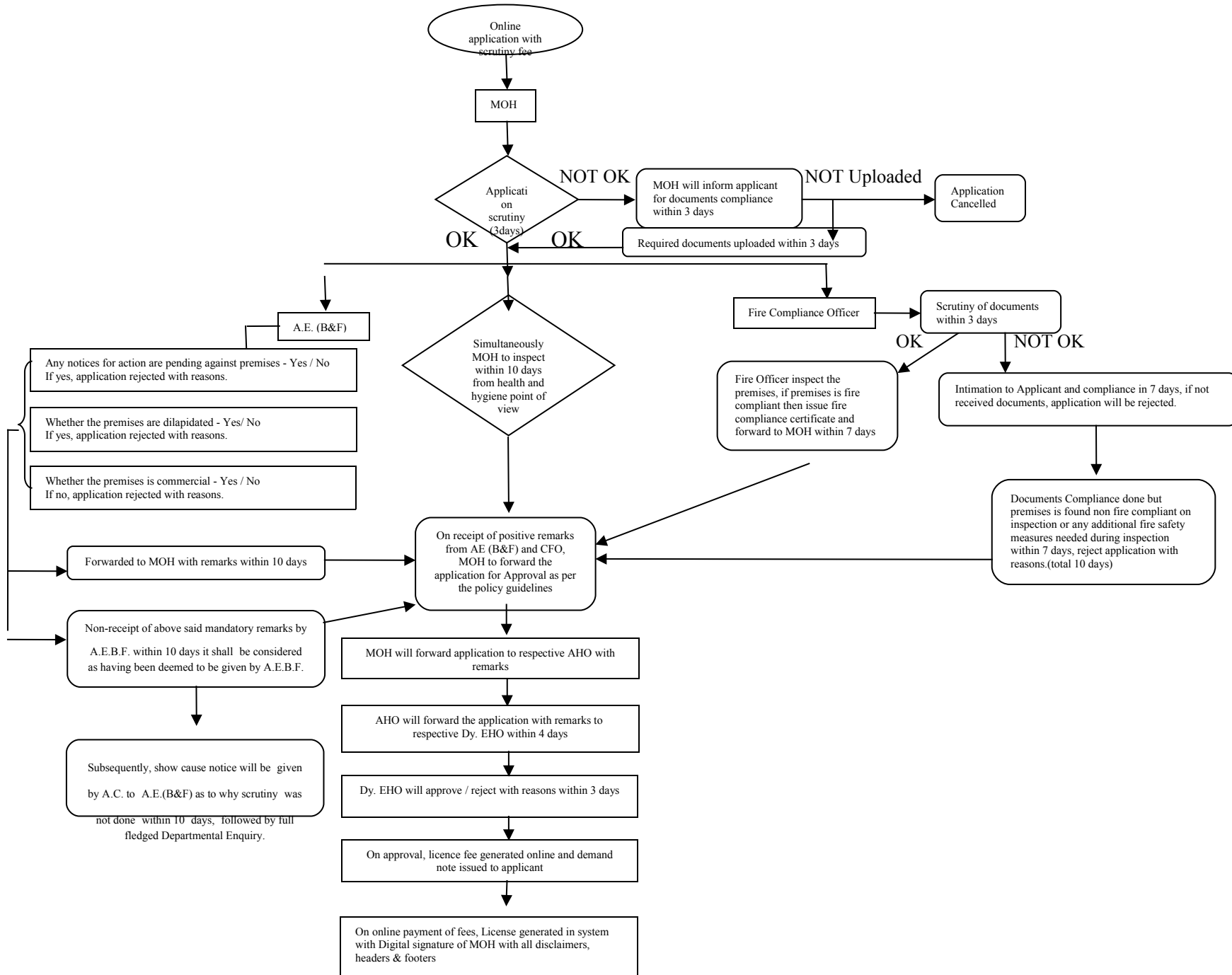
**Sd/-
Executive Health Officer**

Process Chart for Revised Procedure for issue of New 'Preparation & Sale of Eatables' License with Timelines



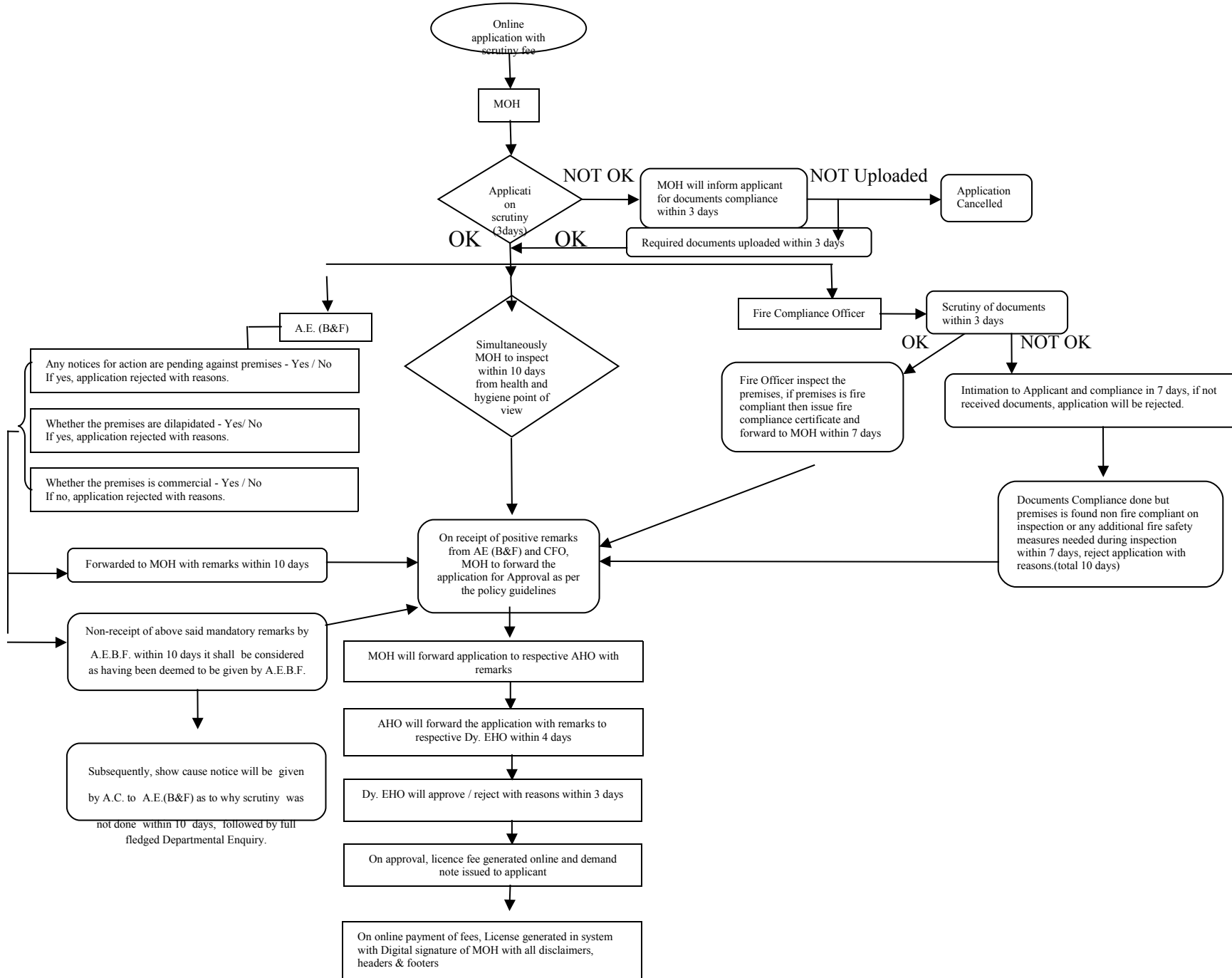
**Sd/-
Executive Health Officer**

Process Chart for Revised Procedure for issue of New 'Bakery' License with Timelines



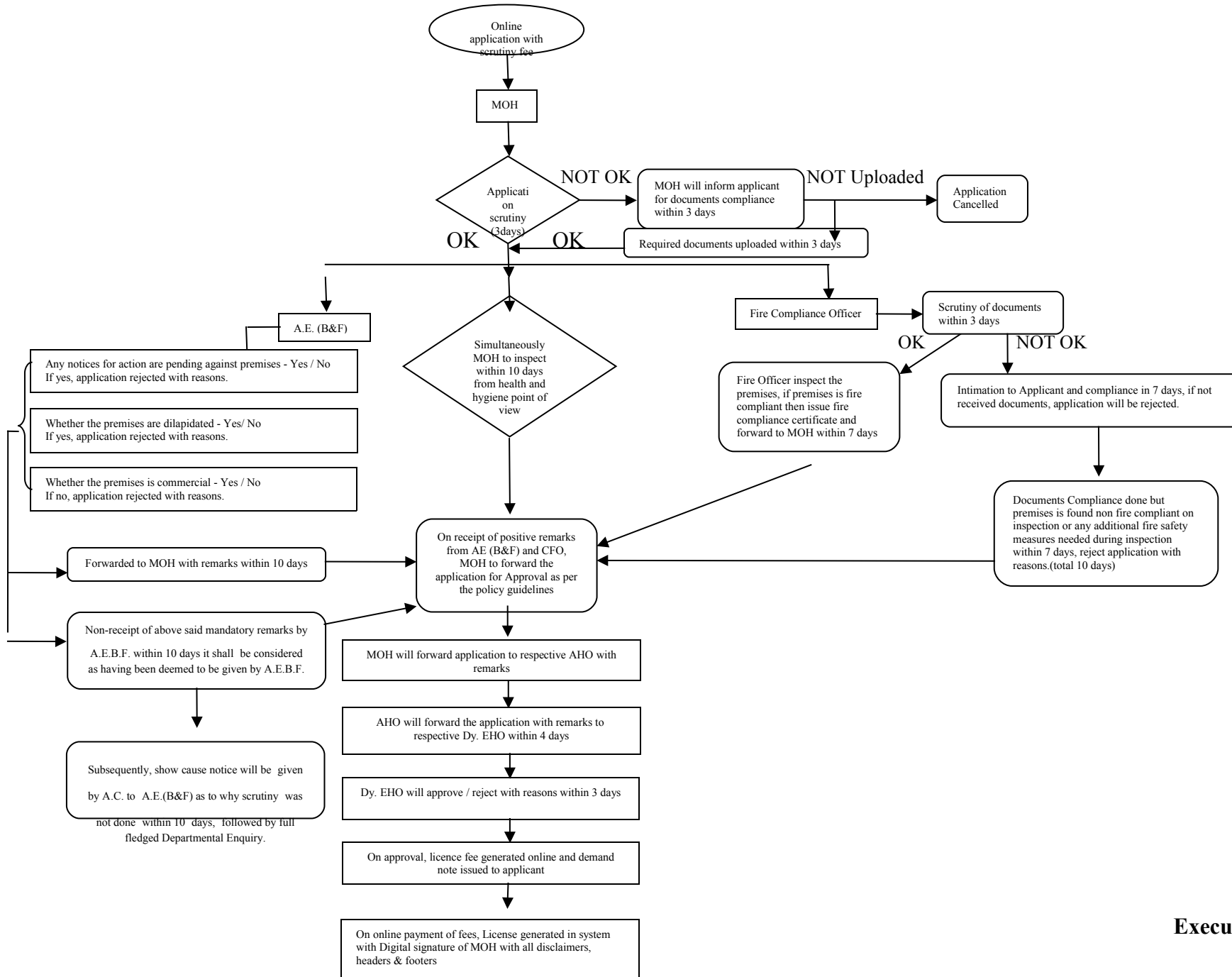
**Sd/-
Executive Health Officer**

Process Chart for Revised Procedure for issue of New ‘Sweet meat shop manufacturing & sale’ (including manufacturing of ice creams) license with Timelines



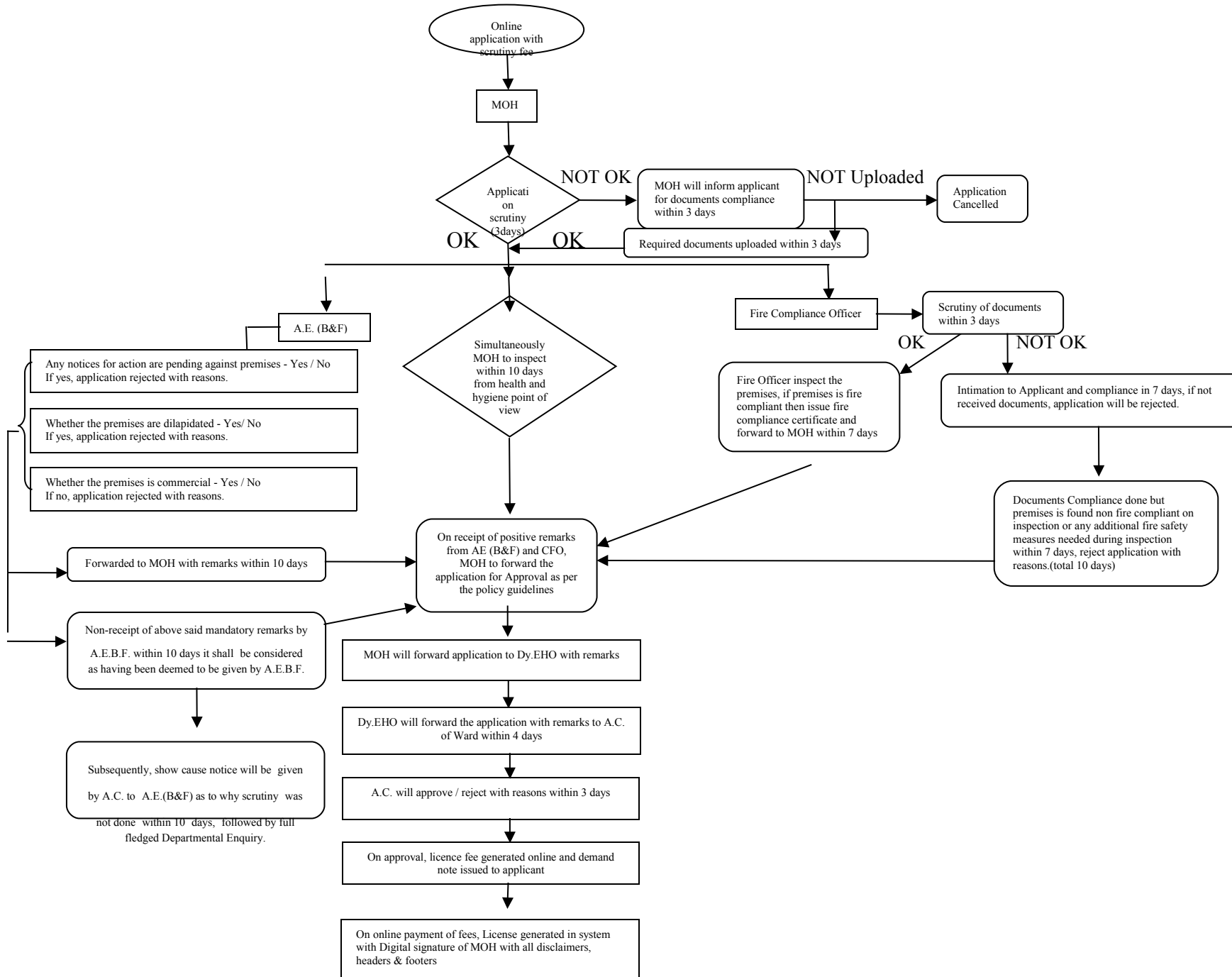
**Sd/-
Executive Health Officer**

Process Chart for Revised Procedure for issue of New ‘Manufacturing of Pharmaceuticals, cosmetics and toilet goods’ license with timelines



**Sd/-
Executive Health Officer**

Process Chart for Revised Procedure for issue of New 'Keeping of Lodging House' License with Timelines



**Sd/-
Executive Health Officer**